

Project.

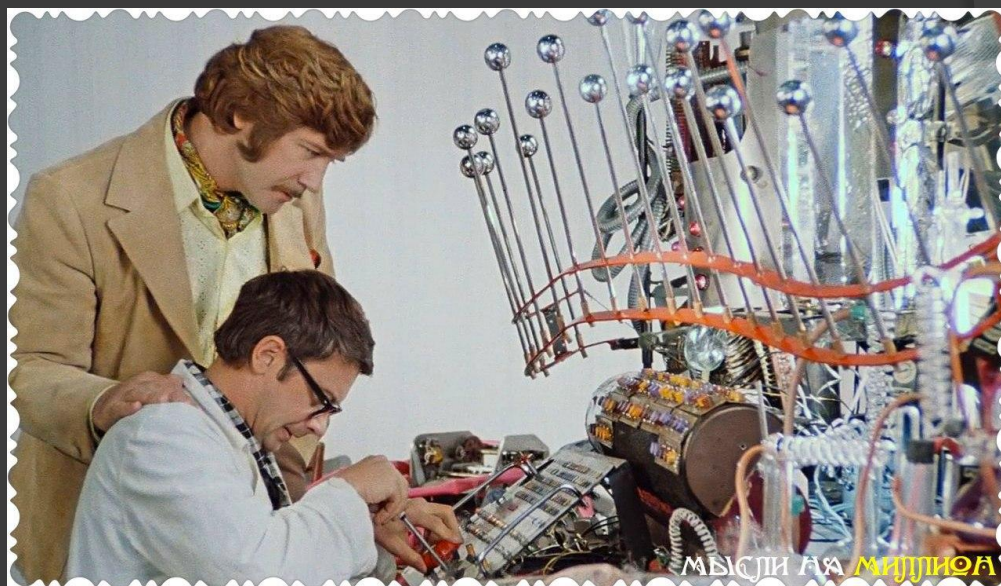
**WHAT WOULD YOU LIKE TO INVENT?**

BY ANDREY, SORBON, SERGEY, MAKSIM.

# Time machine.

- ◉ We invented the time machine in 2016.

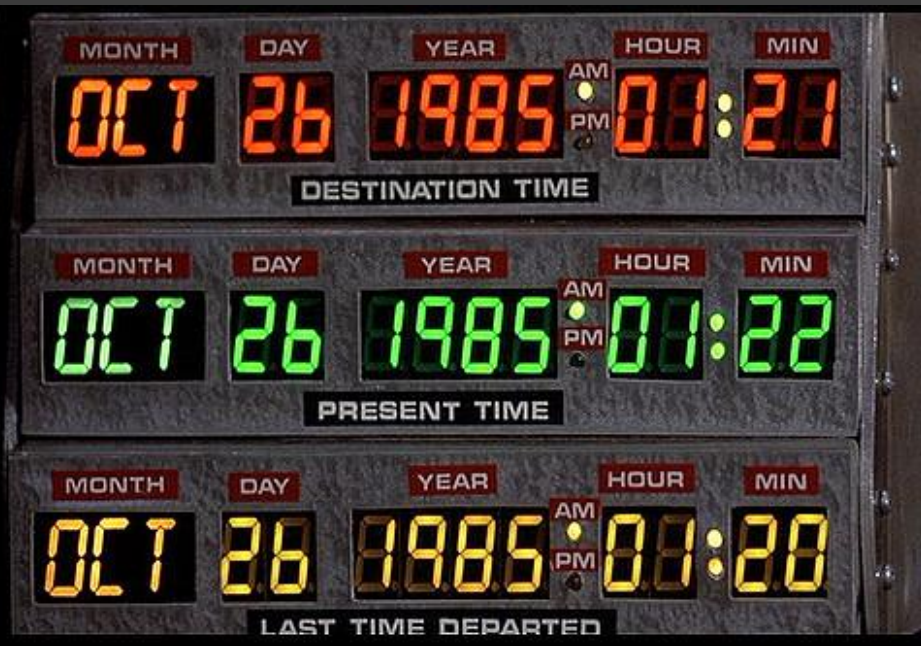
To use the machine you need to go into the box.



# Time machine.

- Then write the date and press the button.

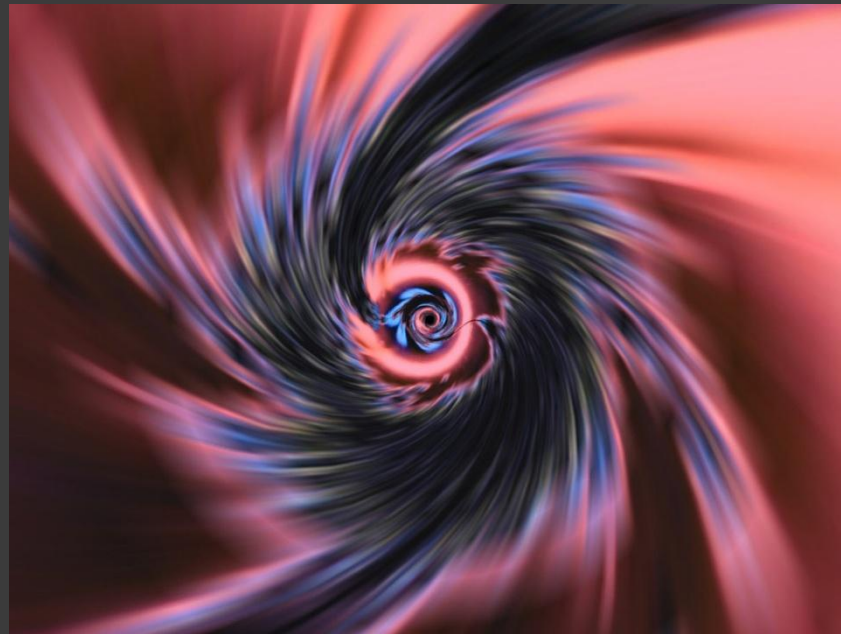
And you find yourself in that year.





# Time machine.

- ⦿ To return to do the same.
- ⦿ Sometimes you can get into the system because of a failure a different date.



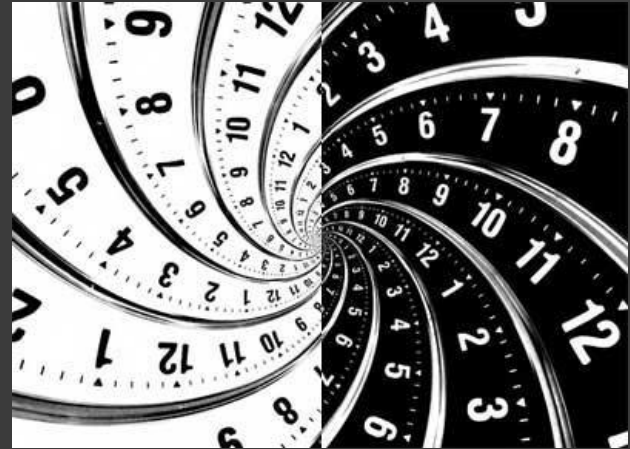
# Time machine.

- ⦿ But usually it works well.
- ⦿ If this happens you fly back.



# Time machine.

- ◉ You can see the dinosaurs.
- ◉ The main thing to keep the rules teleport.



# The advantages "Time machine" :

- ◉ The first advantage of a "Time machine": you can see the future.





# The advantages "Time machine"

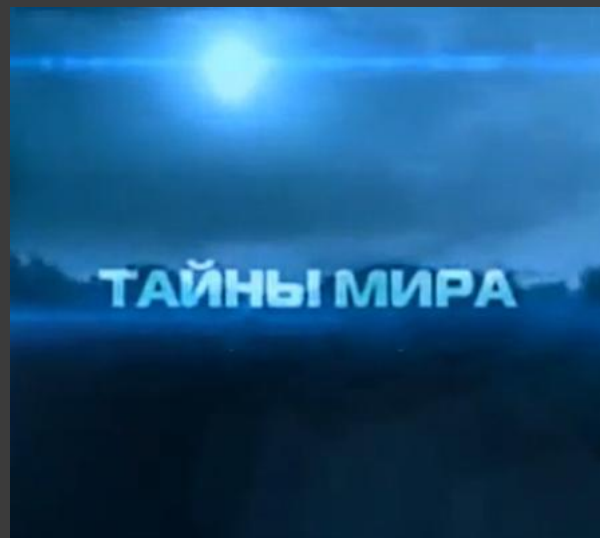
- Second: you can be in the past and to correct errors.





# The advantages "Time machine"

- ◎ Third: you can unravel the mysteries of the world.



## Deficiencies "time machine" :

- ⦿ The first drawback of a "Time machine": expensive materials for their production.



# Deficiencies "time machine" :

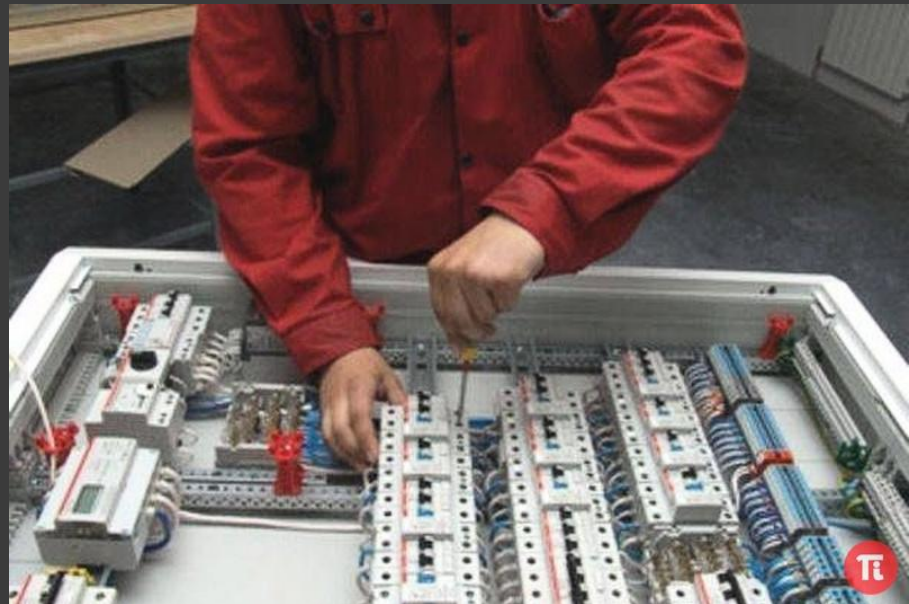
- Second: heavy use, and need specialists.





## Deficiencies "time machine" :

- Third: if the machine breaks down it will be difficult to repair.



# Advertising

## The time machine.

This invention makes it possible to travel through time. Machine is made of a complex mechanism and the box.

Height: 2 meters

Width: 3 meters

Weighs: 700 kg