

## Lift up hole RF breakdown

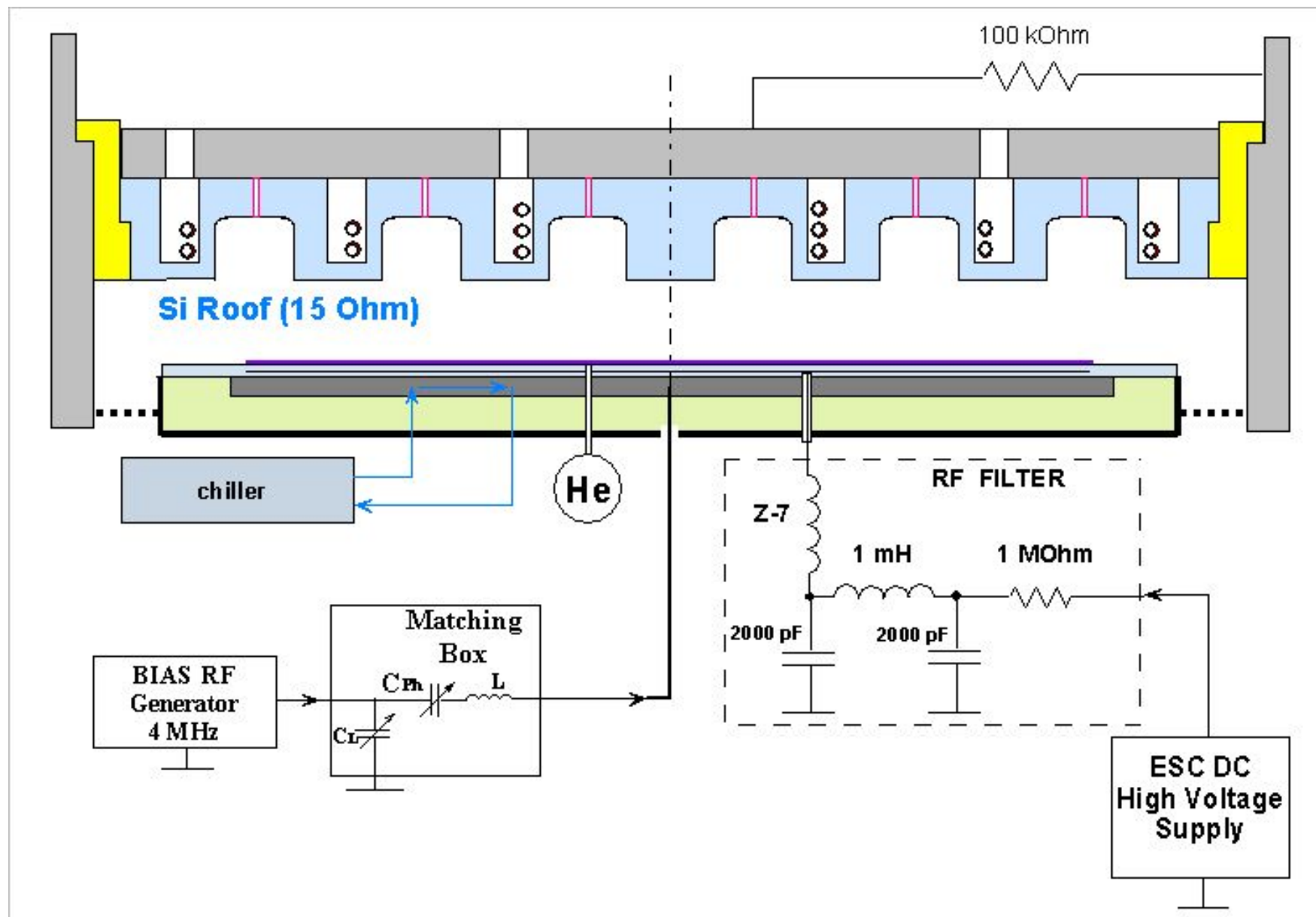
### SE-4000 Experimental

2006.06.27 ~ 2006.07.14    Old type cathode block was checked  
by high RF voltage bias (up to 8200

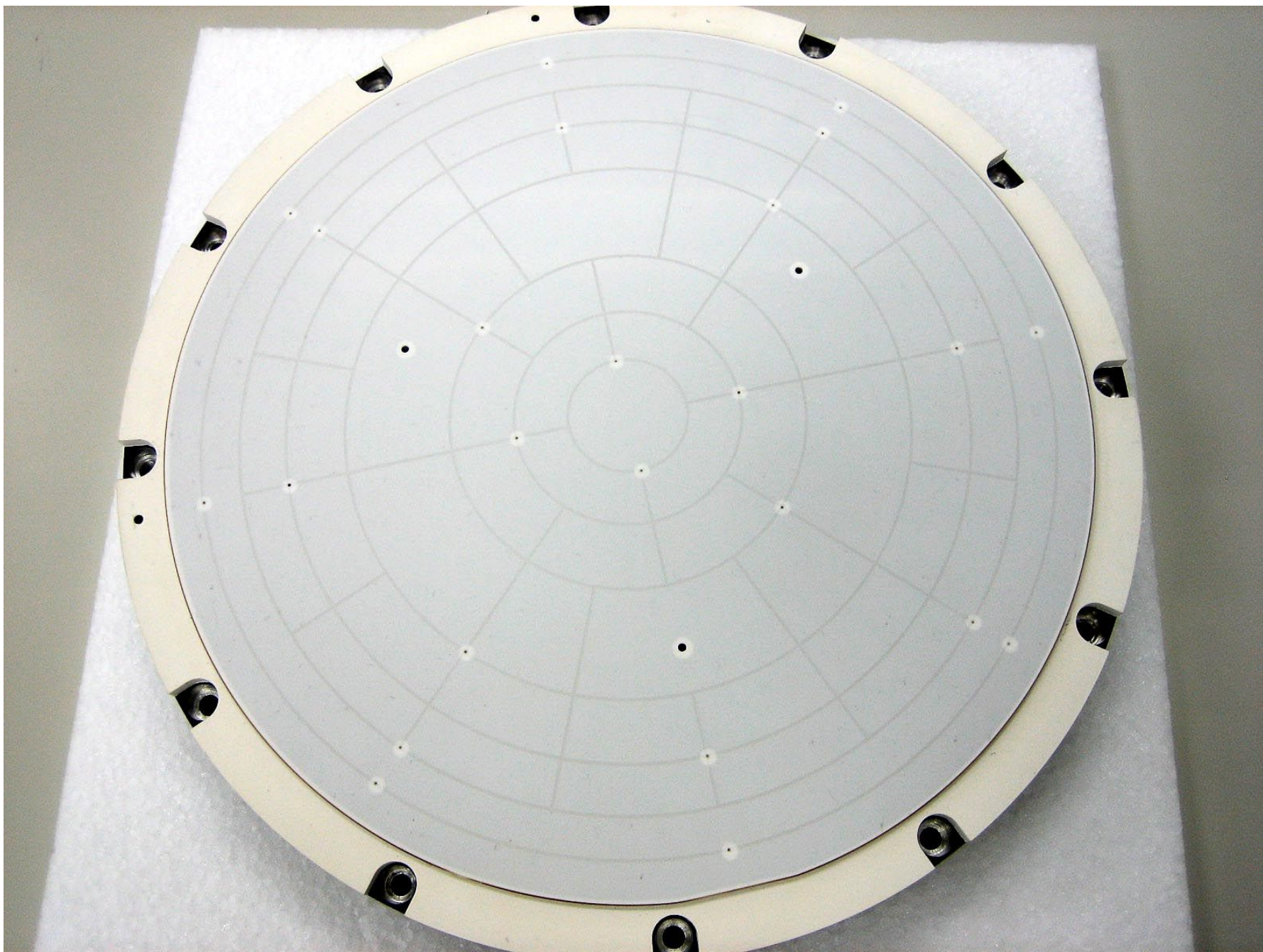
Vp-p)

Cathode: N4X05 - 2310
-----------------------

Standard connection was used in this experiments:  
RF power - to base electrode,  
DC high voltage – to ESC was applied.

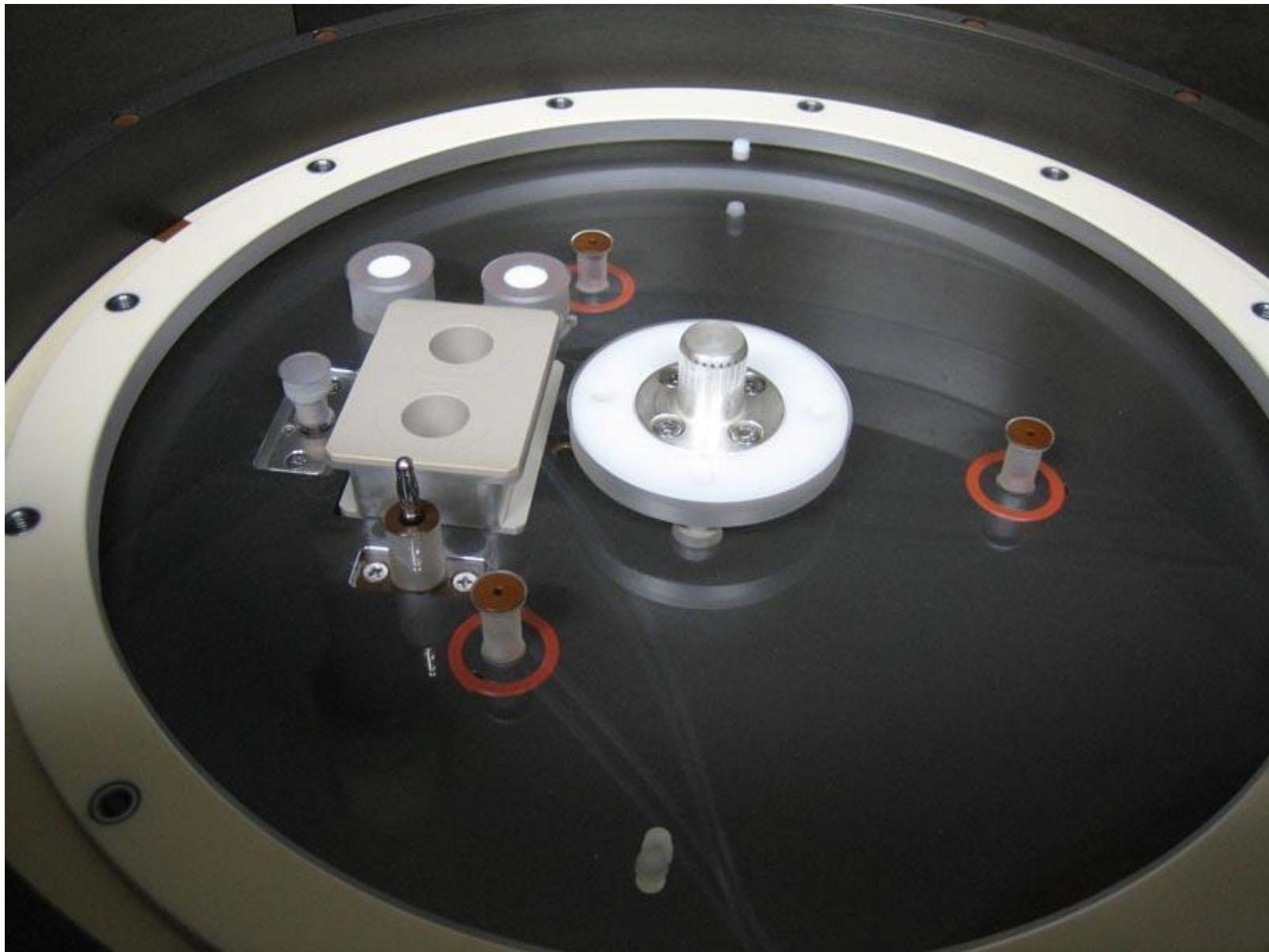


After experiment ESC surface has no damage, although many gas hole low power breakdowns occurred

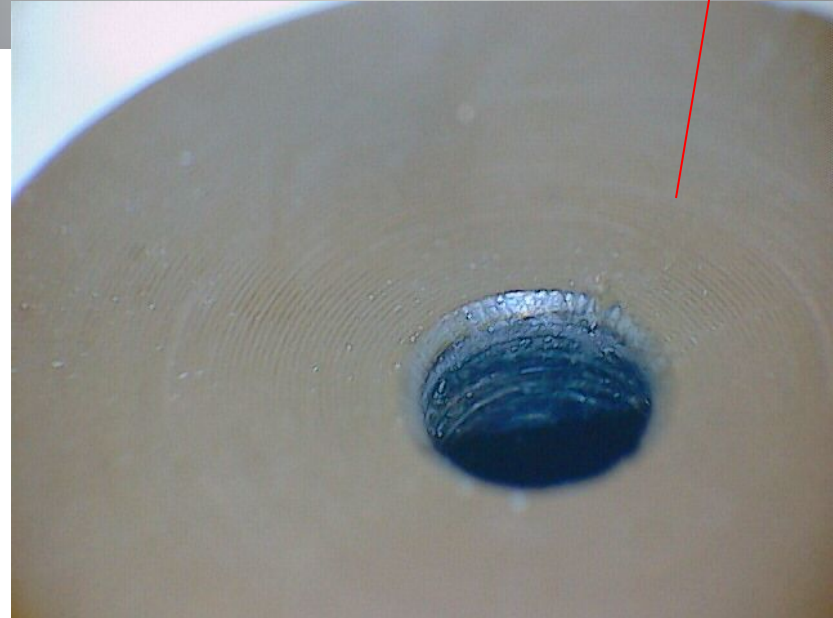
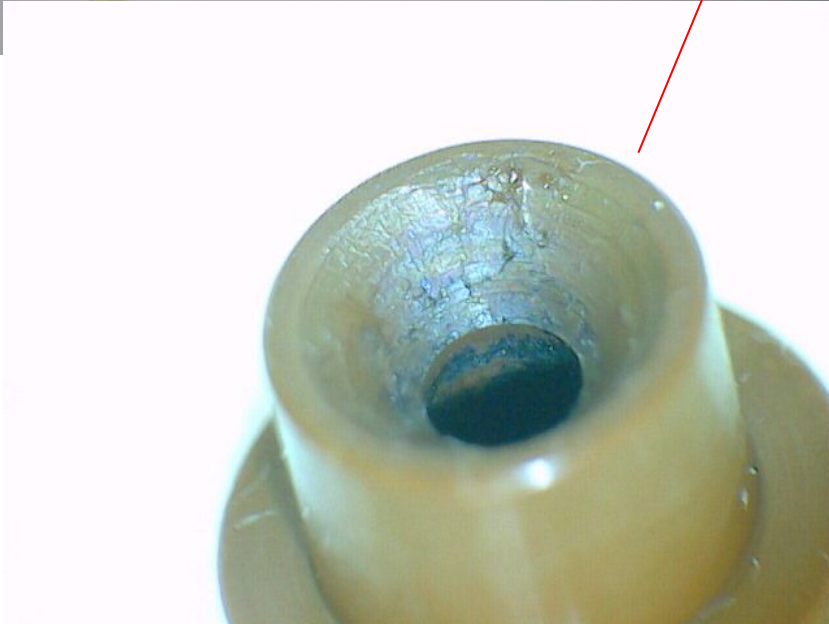




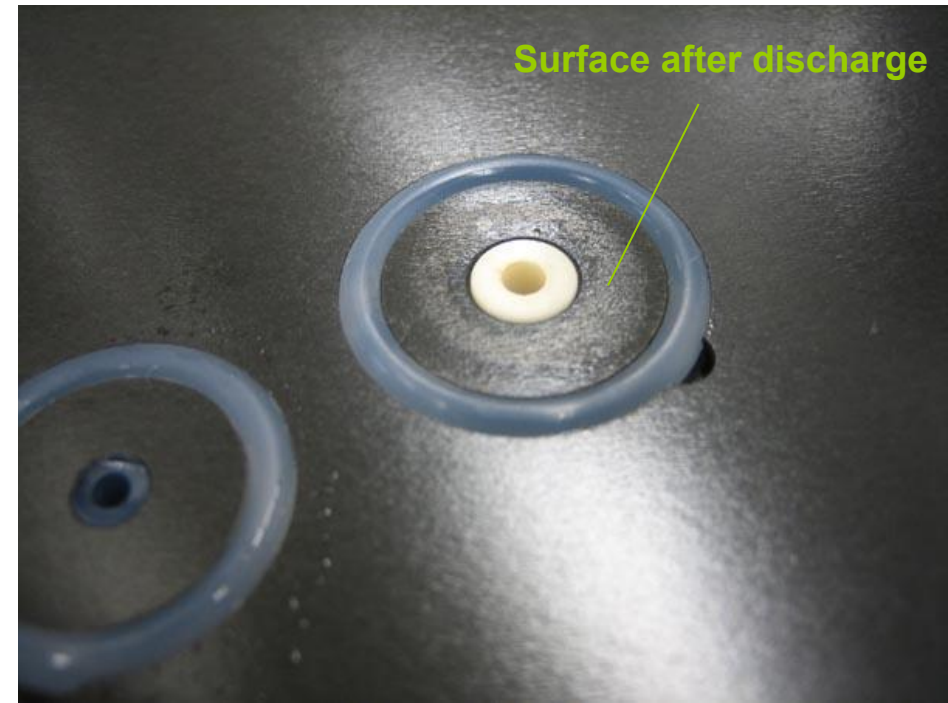
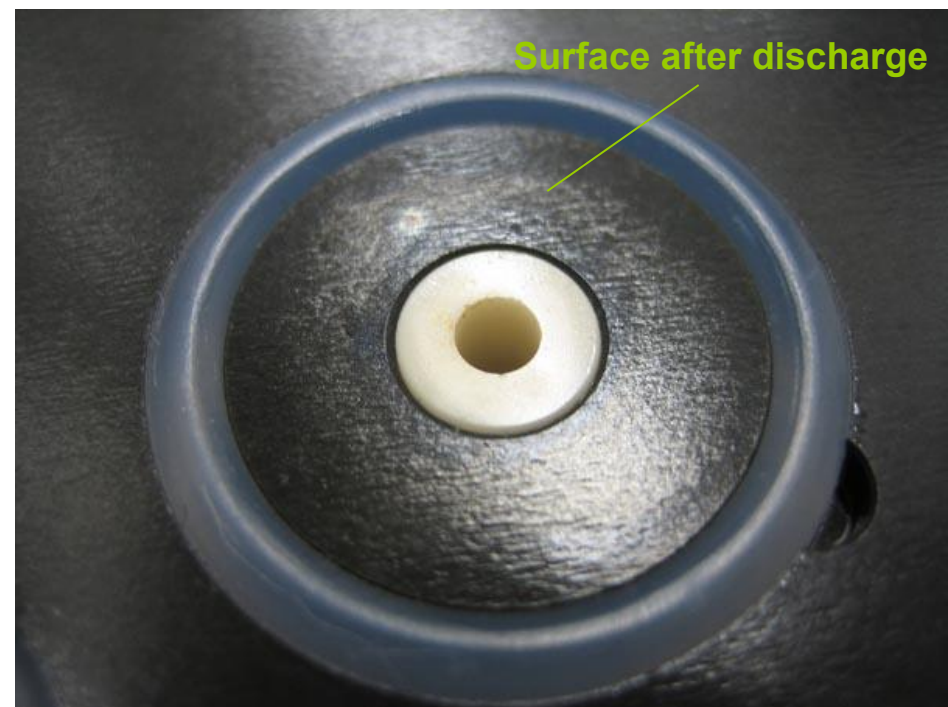
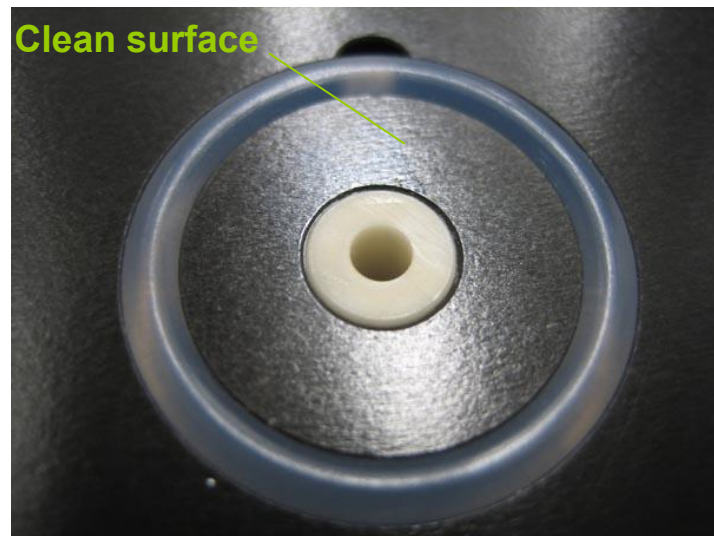
Under cathode parts has no damage too.



But one lift up hole and lift up pin has traces  
of RF capacitive discharge



Cathode bottom surface around this lift up hole has traces of RF capacitive discharge too.



Position of capacitive discharge  
inside lift up hole

V.Menagarishvili

2006/07/24

