

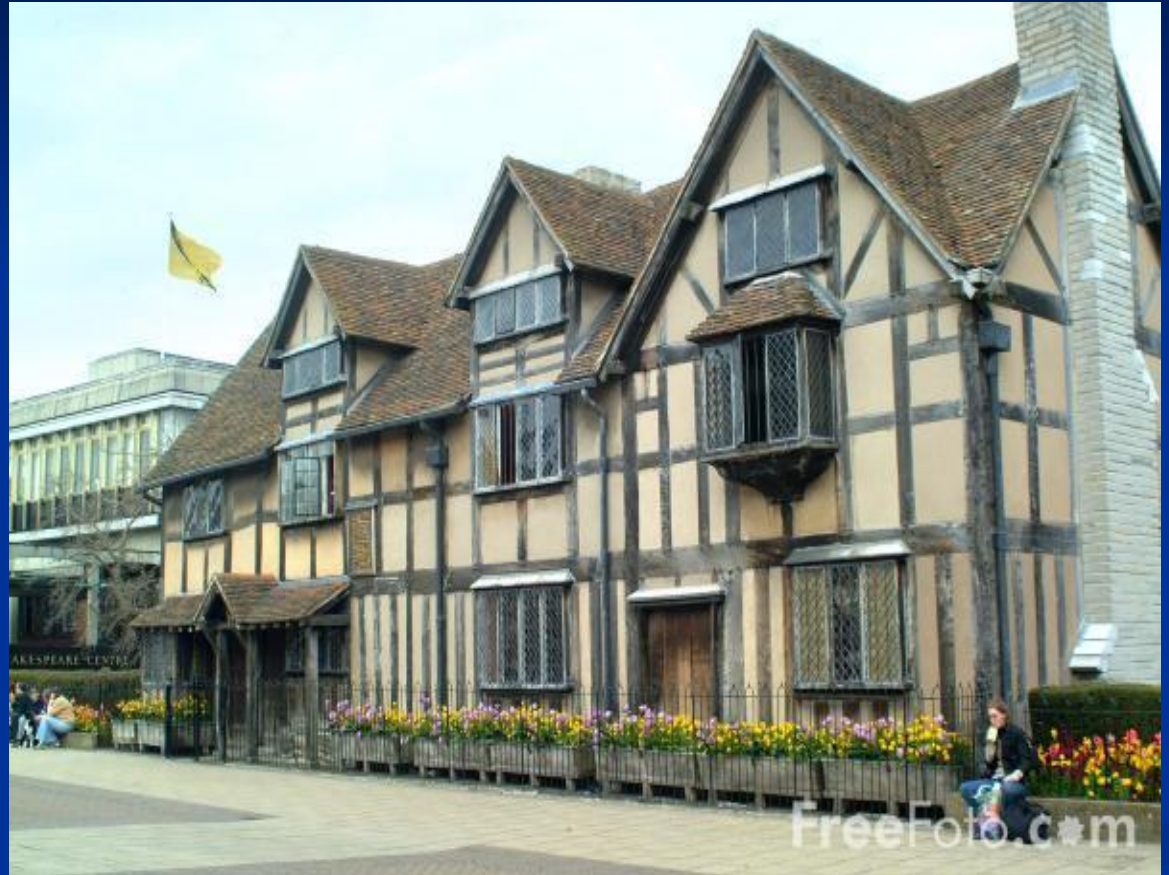
William Shakespeare

(23d of April 1564 – 23d of April 1616)



Shakespeare was born in Stratford-upon-Avon

Shakespeare's
birthplace –
Henley Street



Stratford is one of the oldest market towns. It stands on the river Avon

Warwick Castle and
the river Avon



Shakespeare's coat of arms and motto



Shakespeare's grammar school in Stratford-upon-Avon



Shakespeare directions in Stratford



Stratford has still preserved its own character and atmosphere



The houses are very old and some of
them date back to Shakespeare's
time



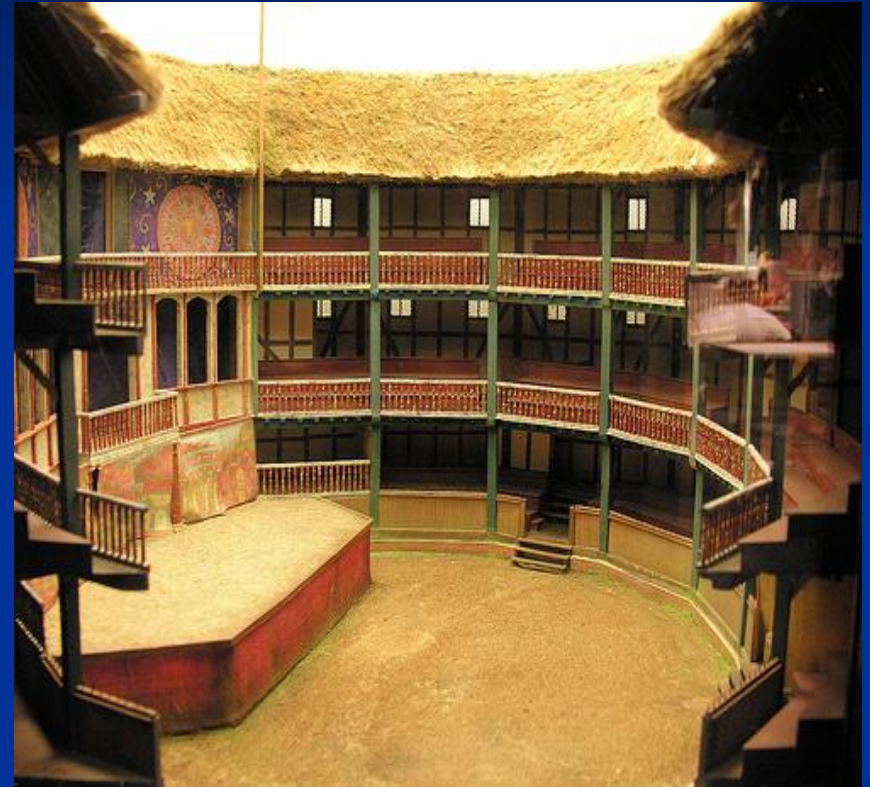
In 1582 Shakespeare married Anna Hathaway. This is Anna's cottage



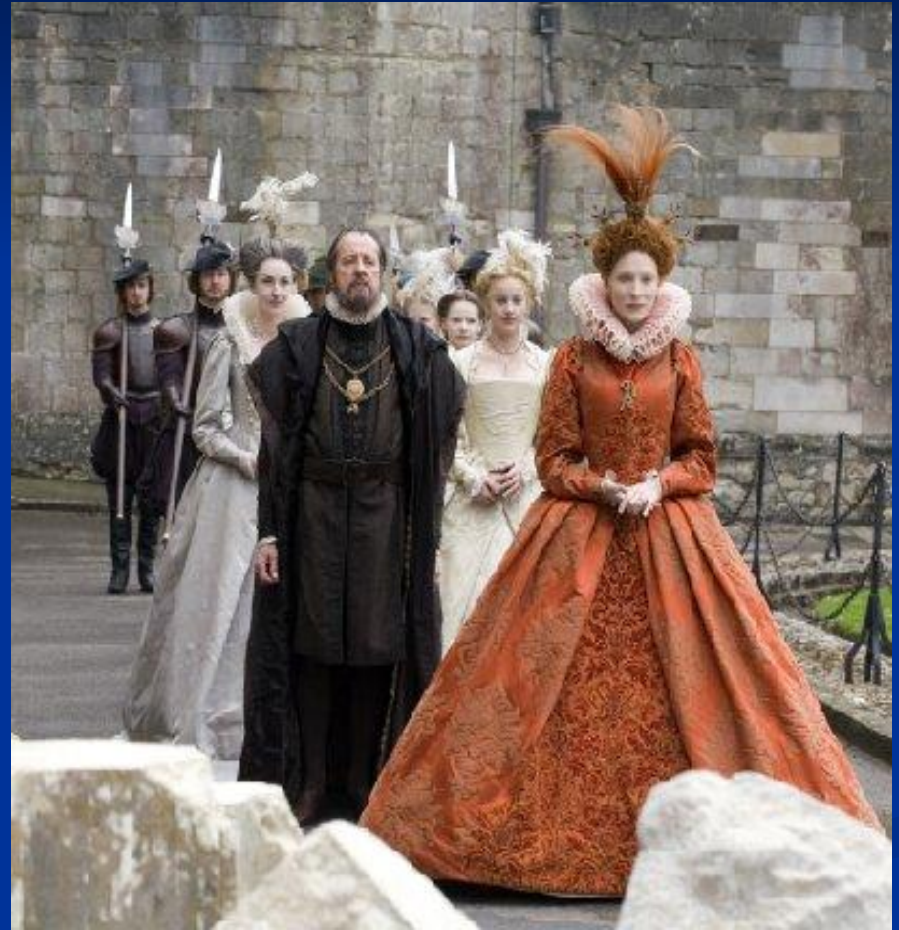
1585. Shakespeare moved to London.
He began to work at “Globe” theatre



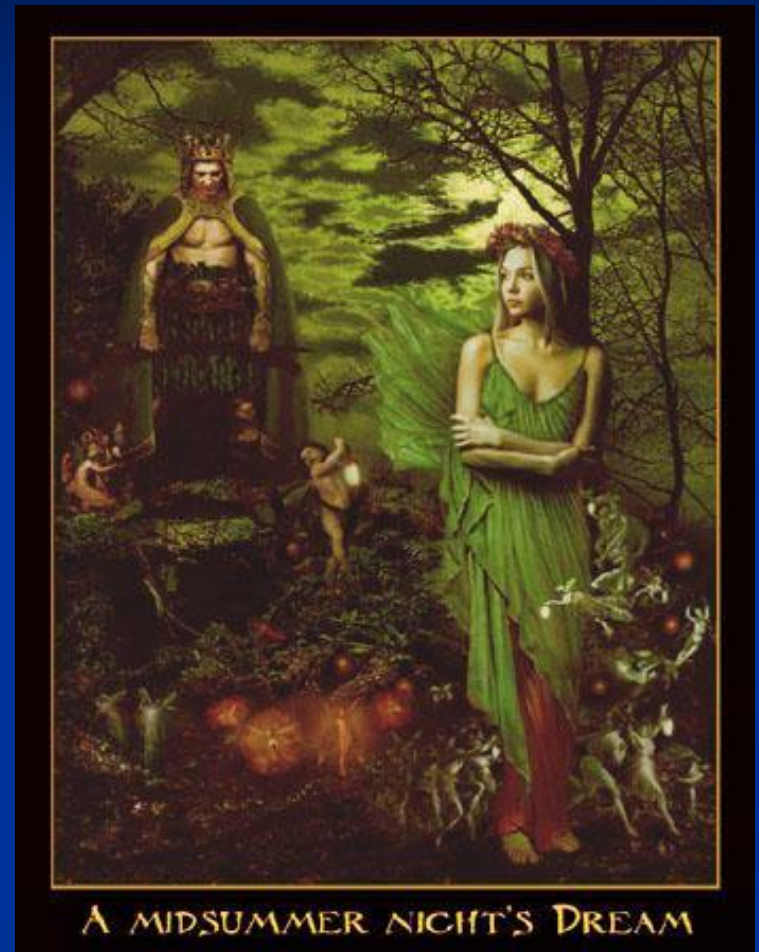
“Globe” theatre



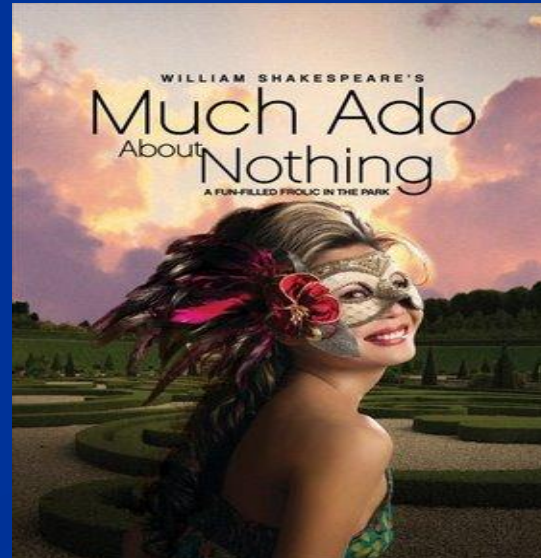
Elizabeth I



1593 -1600: comedies



Comedies



“Love’s labour’s lost”



1594. “Romeo and Juliet”



“Romeo and Juliet”



Young actors in movies



“King Lear”



Уильям Шекспир

КОРОЛЬ ЛИР



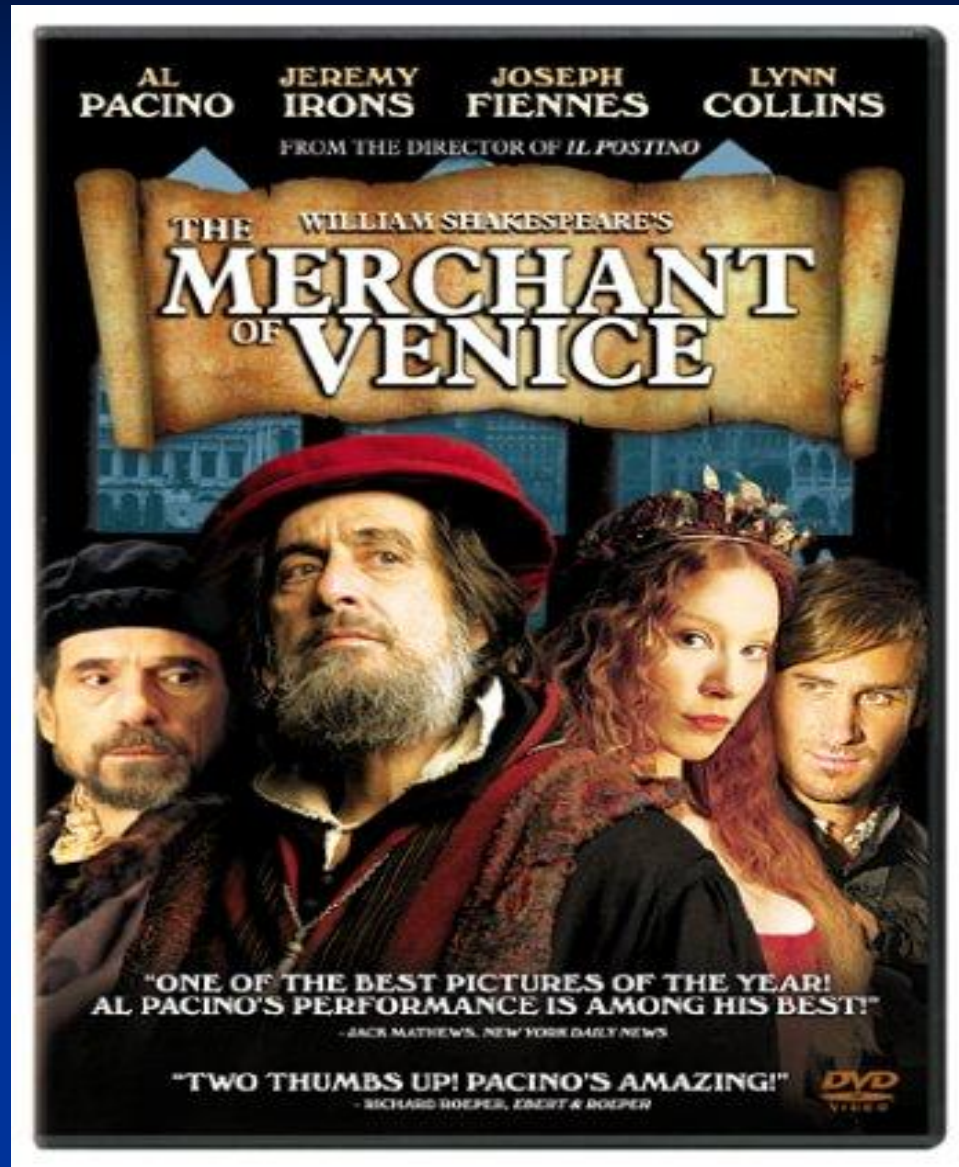
“Othello”



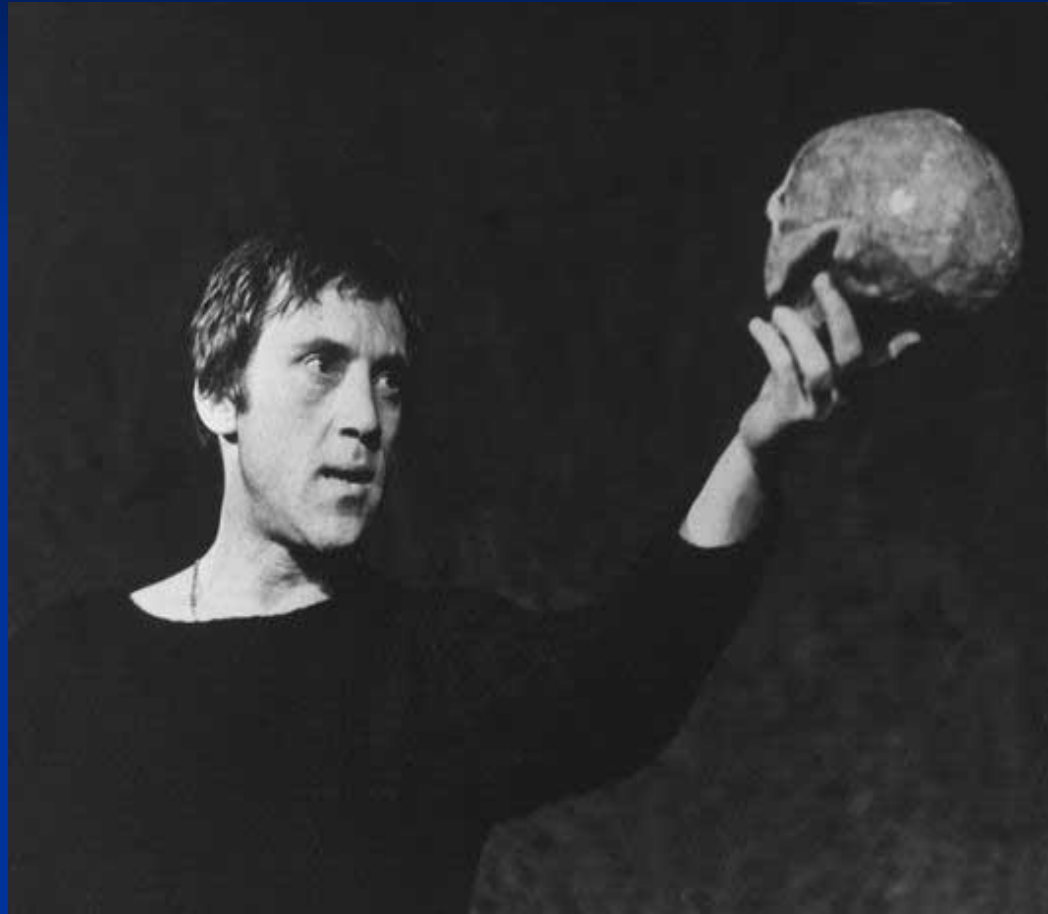
“Macbeth”



“The Merchant of Venice”



“Hamlet”



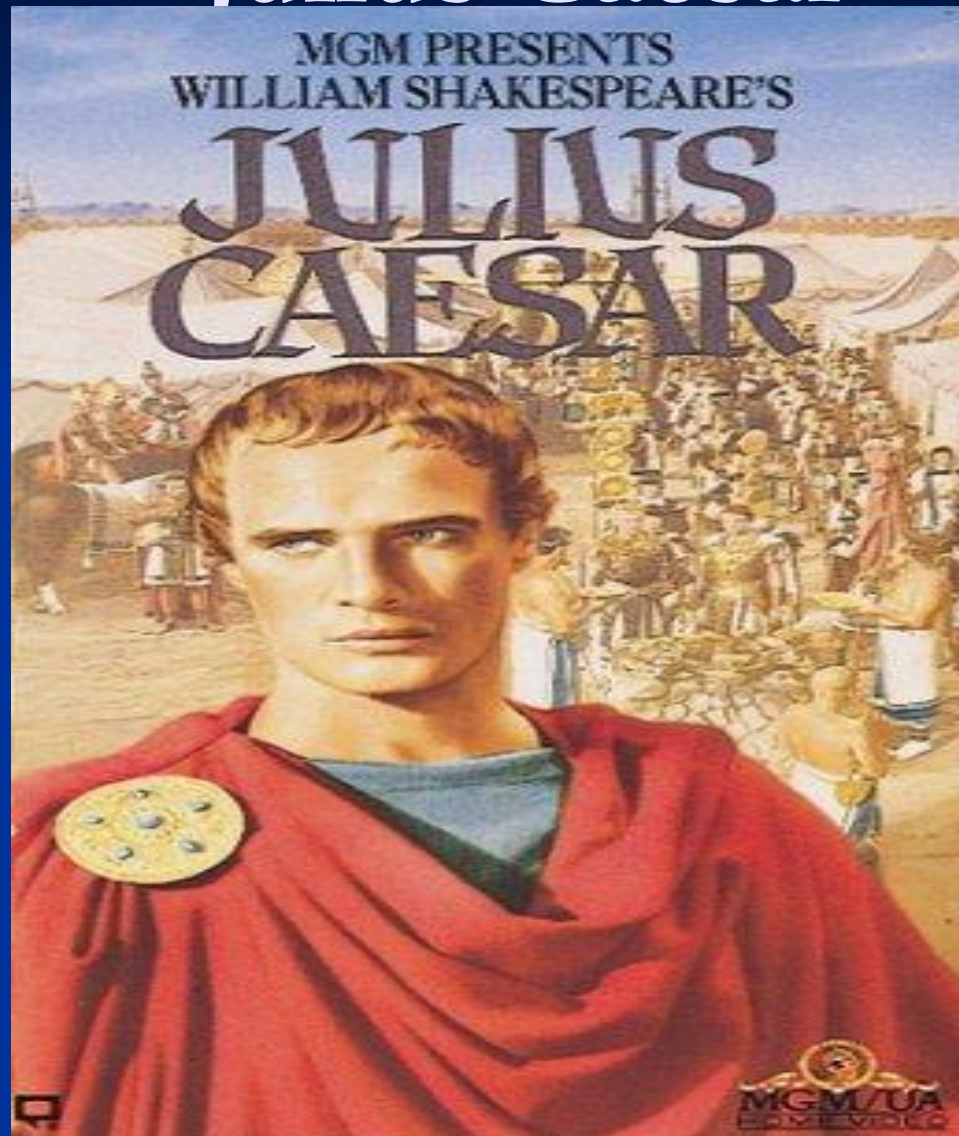
“Hamlet”



“Hamlet”



“Julius Caesar”



Shakespeare's wrote:

- 154 sonnets;
- 37 plays (tragedies and comedies);
- 2 poems



1610-1612. Back to Stratford

Shakespeare
bought a new
house –
“Nash’s House”

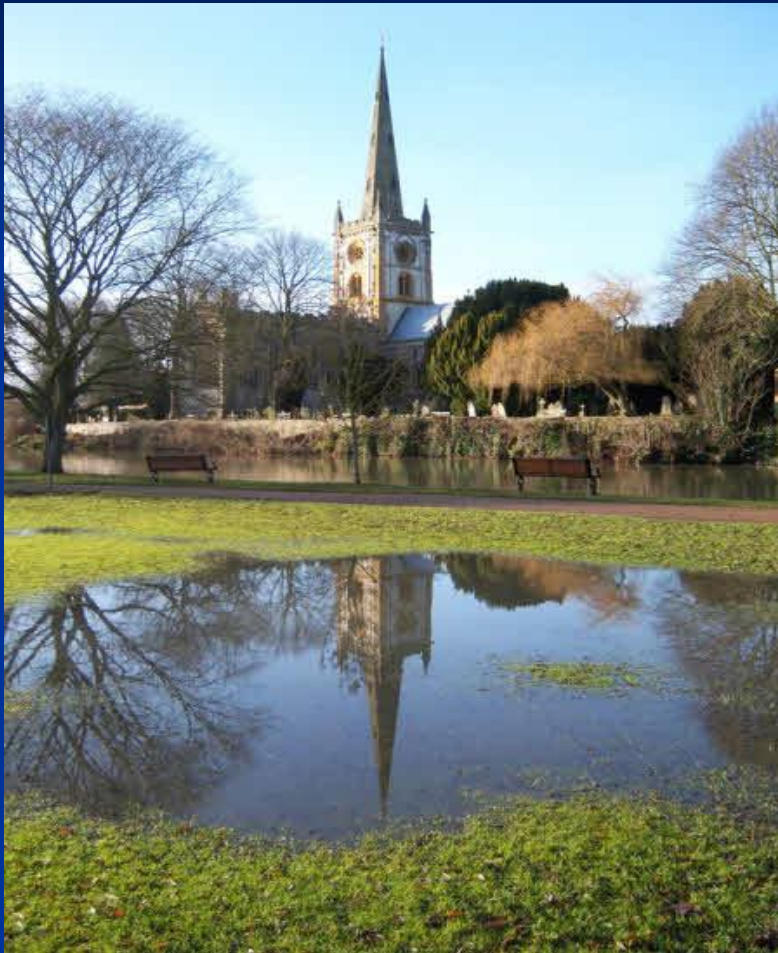


1616 – Shakespeare died

Holy Trinity
Church: he was
baptized and
buried here



Holy Trinity Church



Shakespeare's memorial



Monuments



Characters from plays around Shakespeare's statue

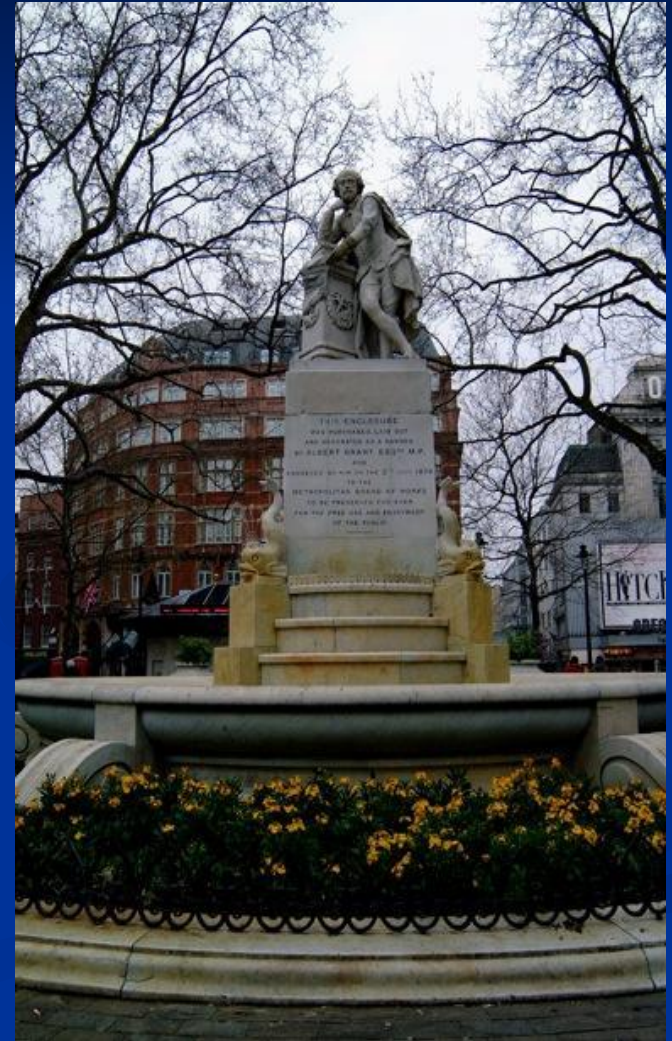


Shakespeare's monuments

1. Central Park,
New York



2. Leicester
Square,
London



The Royal Shakespeare Theatre in Stratford-upon-Avon is a living memorial to the poet's work



William Shakespeare – a great English poet and writer

