

Site Graphics

Graphical Alarm Management System


COOPER Safety
Fire Systems

Cooper Site Graphics

- Graphical aid to manage alarm activations
- Programmable to suit any application
 - Hospitals, universities, hotels, etc
- Simple, clear and user friendly
- Efficient management of critical systems
 - Fire Alarm
 - Emergency Lighting
- Allows Low-Skilled operation
 - PC based control
 - Improved record logging
 - Audit Trail
 - Multiple Users: 2000 max
 - Dongle protected



Cooper Site Graphics

- Secure System
- Multiple Users and Multiple PC Workstations
- Image, Plan or Text Displays
- Simple Navigation & Control
- Current Event List and In-Depth Historical Analysis
- Windows XP, 2000 Compatible
- Choice of Specification



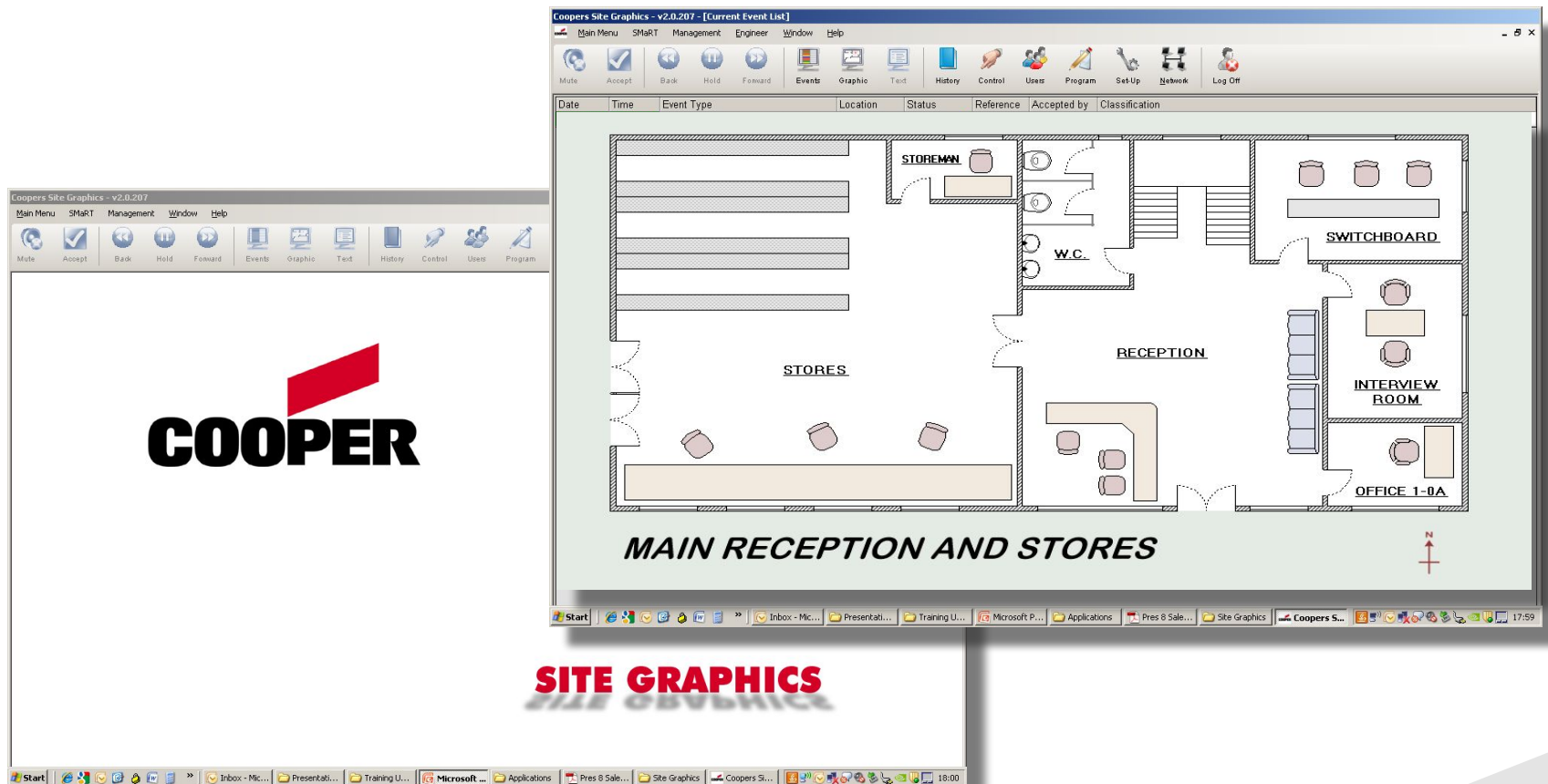
System Application

- Large industrial or commercial sites
- Critical safety requirements
- Multiple building projects

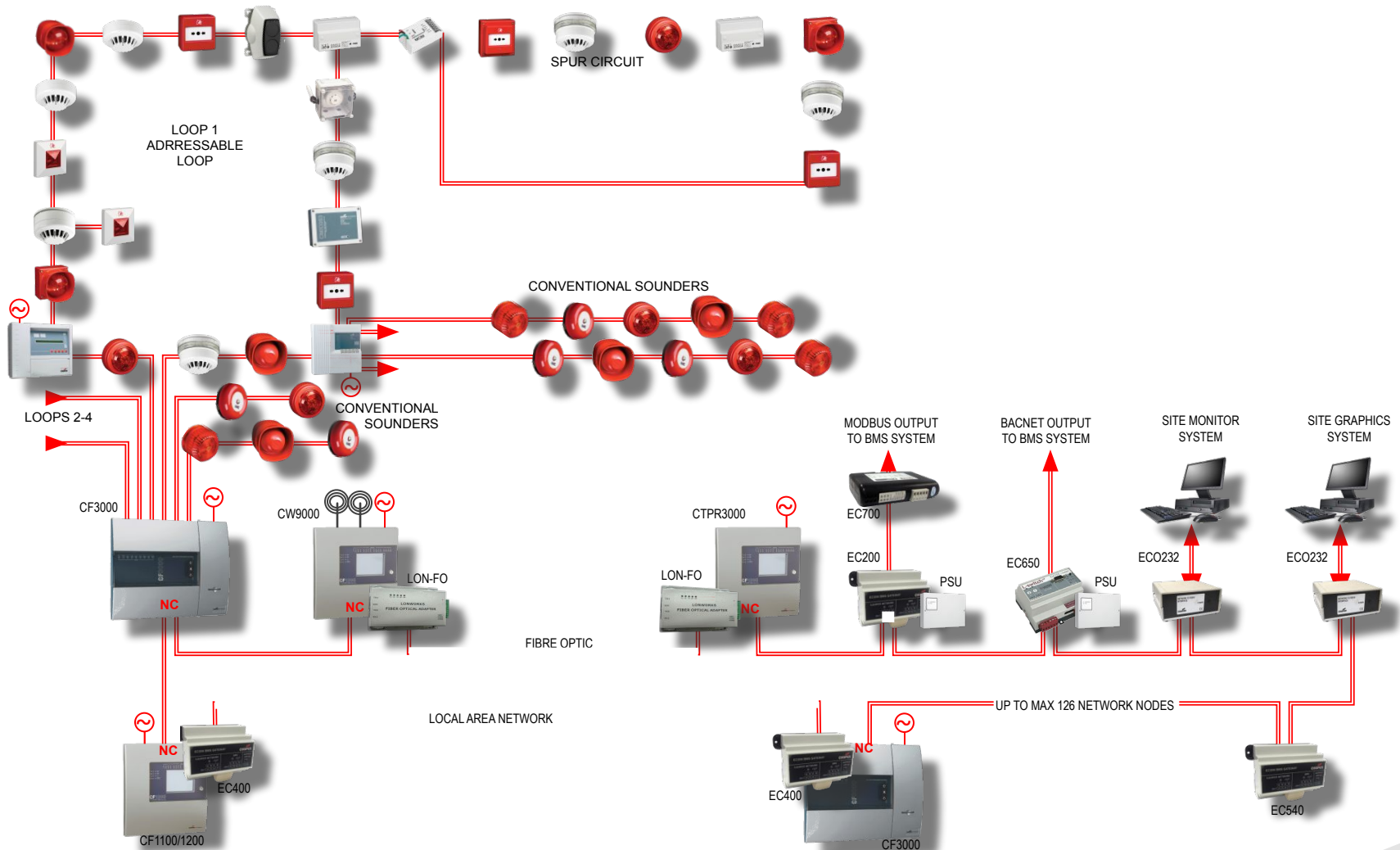


System Application

- Efficient facilities management
- Alarm & Fault conditions

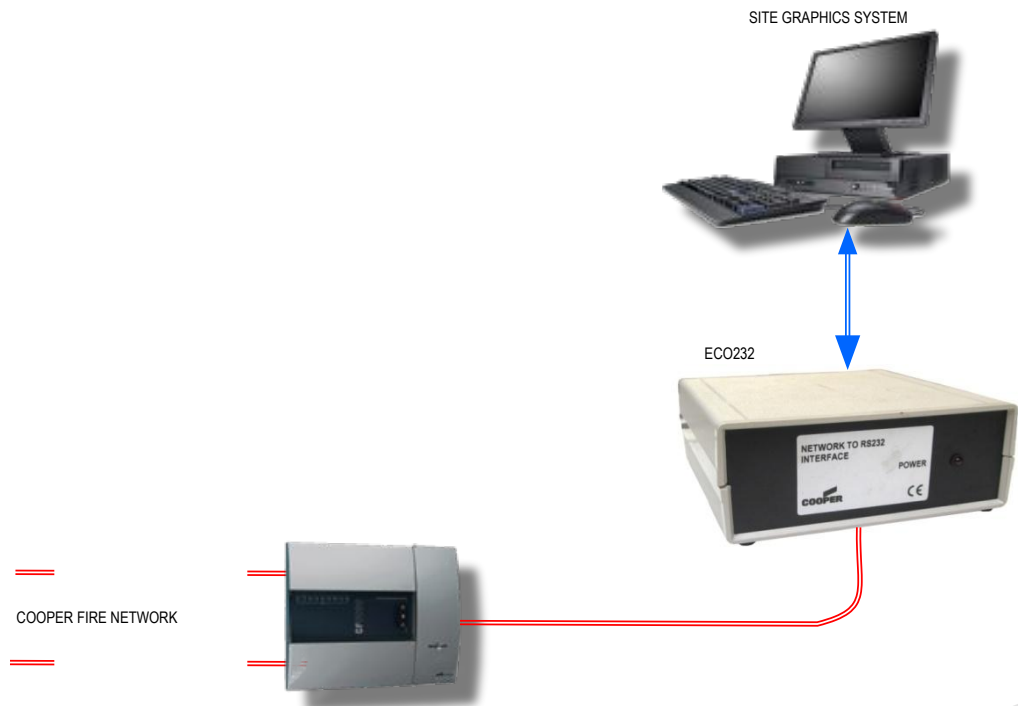


System Schematic



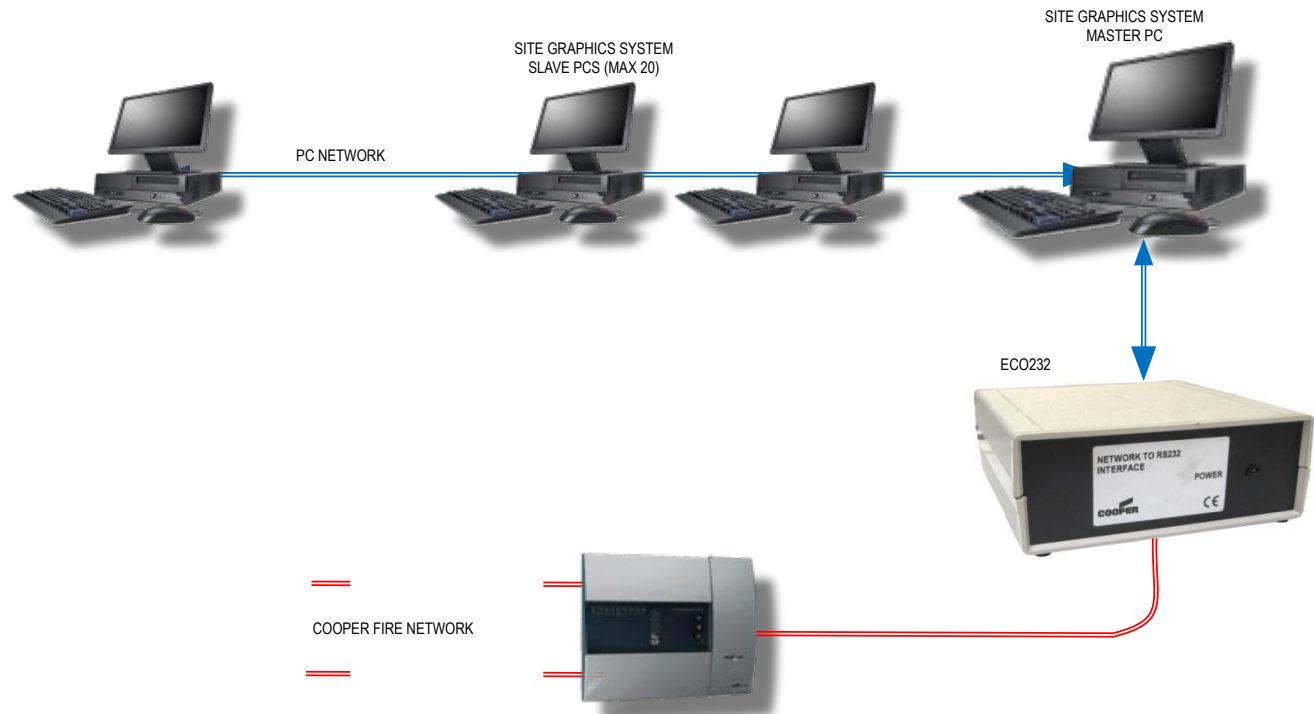
System Schematic

- Single PC to Cooper Fire network



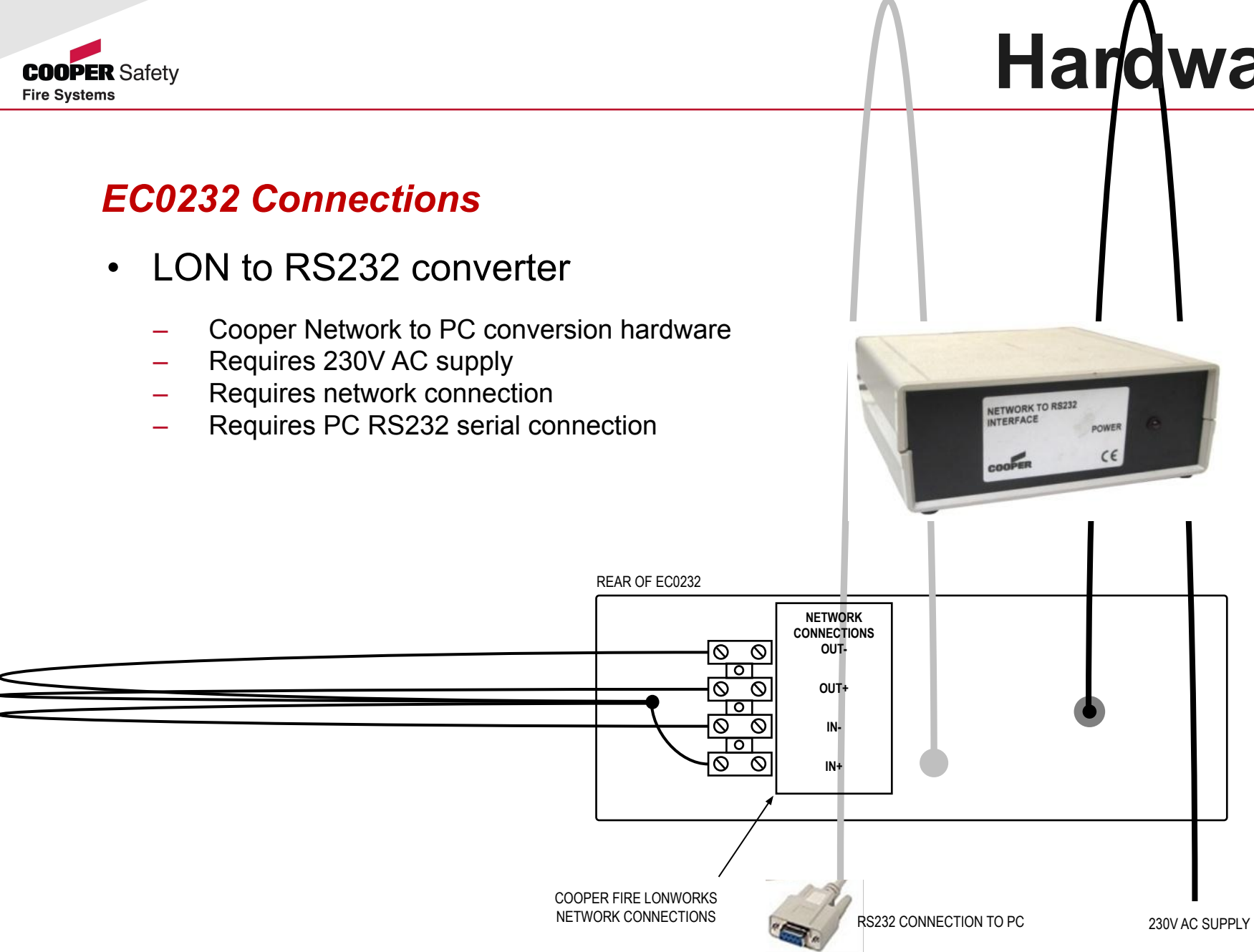
System Schematic

- Multiple PC to Cooper Fire network
 - 1 Master PC
 - 20 Slave PCs max



EC0232 Connections

- LON to RS232 converter
 - Cooper Network to PC conversion hardware
 - Requires 230V AC supply
 - Requires network connection
 - Requires PC RS232 serial connection



Requirements

- Coded Dongle
 - Serial Number, Client ID, any additional options
 - Supplied with each software package
 - Not required to install and run software
 - Will not communicate with Panels without dongle
 - Dongle plugs into the PC parallel port
 - USB dongle is available on request



Minimum PC Spec

- Intel Pentium 2GHz or equivalent
 - Windows 2000 SP4
 - Windows XP Professional SP2
- Memory
 - 512Mb min memory
 - 20Gb min disk space
- Graphics
 - 1024 x 768 XGA graphics card
 - 16 million Colours
- Connectivity
 - 1 – 6 serial ports depending on configuration
 - Parallel or USB for Coded Dongle
 - 10-100 Mps LAN connection for multiple work stations
- Misc
 - Windows compatible sound card
 - 2 button mouse and keyboard



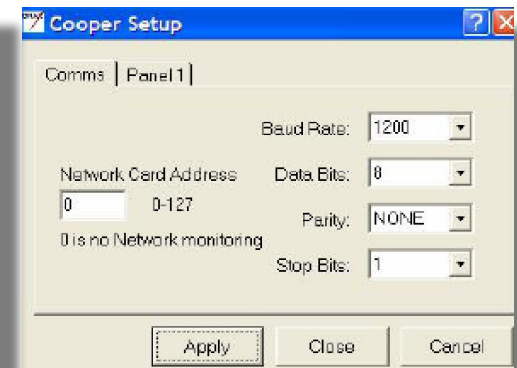
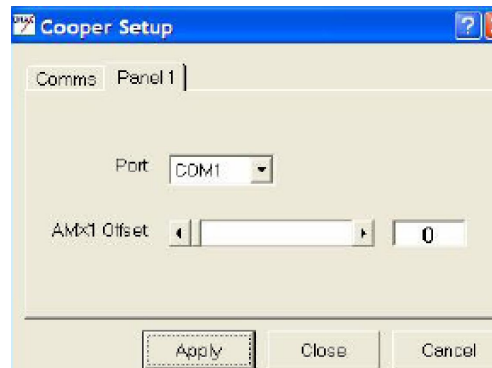
Functionality

- Device Events
 - Device text transmitted by control panel
 - Trigger device alarm or fault to collect data
 - Data: 2-1-56/0 = *Panel Address – Loop No. – Device Address / Input Type*
 - Input types: 0 = *Fire*, 1 = *Pre Alarm*, 4 = *Disablement*, 6 = *Fire Test*, 8 = *Fault*
- Panel Events
 - Global Reset, Silence, Evacuate
 - Power Fault, Battery Fault, Charger Fault
 - Sounder Fault, Earth Fault, FPE and FRE Faults
- Disablement
 - Zone
 - Device

```
.....  
10101000110001111011000001100  
11111110011100110011001010000  
01011000010010011100011001010  
00011101101010101110110110000  
01100000010100101000110001001  
00110011000001000000010000111  
00011101000010110100000100111  
01001111001011011001010100010  
00110100010110000100000010100  
10010011010101101001110110111  
01000010110101001100011101001  
00011010001101001011000000100  
00101010110111010101011000100  
00110001100011110101001010110
```

Network Manager

- Parameters
 - Baud Rate: 4800
 - Parity: None
 - Stop Bits: 1
 - Network Mon: 0
 - Comm Port: As required
 - Panel x - Offset: 0

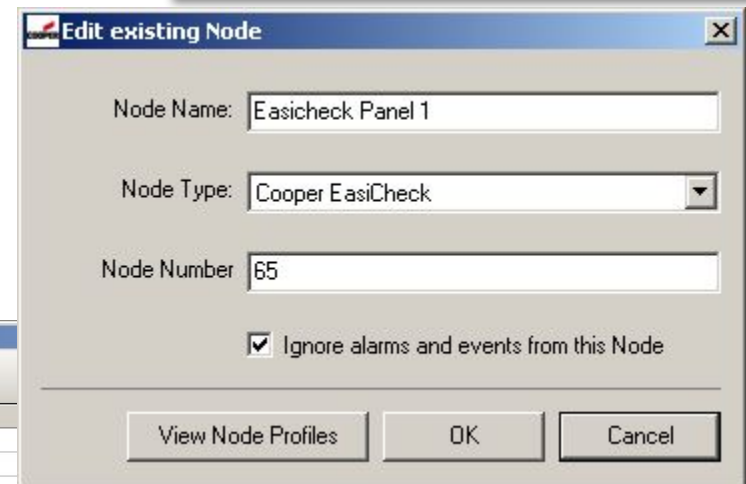


Network

- Network Manager Test Box
 - Engineer / Network Manager / Show Test Box
 - Count increases if active
 - Recheck settings if not
 - Network Poll

Every 30 seconds

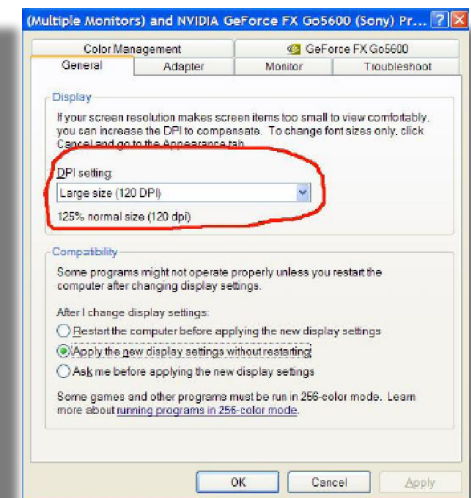
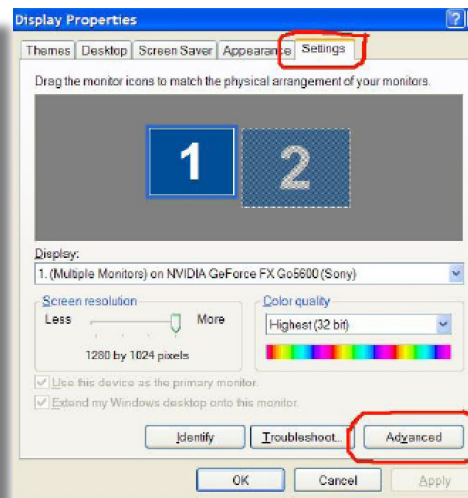
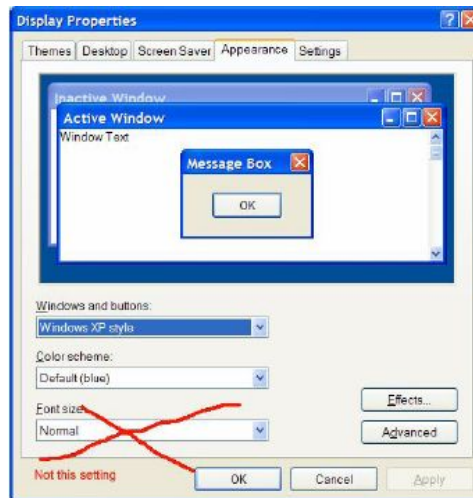
Generates Communications Error message



Node	Connection	Node Description	Node Type	Ignore	Mode
1	Test Node 1	Panel 1	Menvier DF6000	OK	Normal
2	Test Node 2	Panel 2	Menvier DF6000	OK	Normal
3	Test Node 3	Panel 3	Menvier DF6000	OK	Normal
4	Test Node 4	Panel 4	Menvier DF6000	OK	Normal
5	Test Node 5	Panel 5	Menvier DF6000	OK	Normal
6	Test Node 6	Panel 6	Menvier DF6000	IGNORE	Normal
7	Test Node 7	Panel 7	Menvier DF6000	IGNORE	Normal
8	Test Node 8	Panel 8	Menvier DF6000	IGNORE	Normal
9	Test Node 9	Panel 9	Menvier DF6000	IGNORE	Normal
10	Test Node 10	Panel 10	Menvier DF6000	IGNORE	Normal
65	Test Node 65	Easichack Panel 1	Cooper EasiCheck	IGNORE	Normal

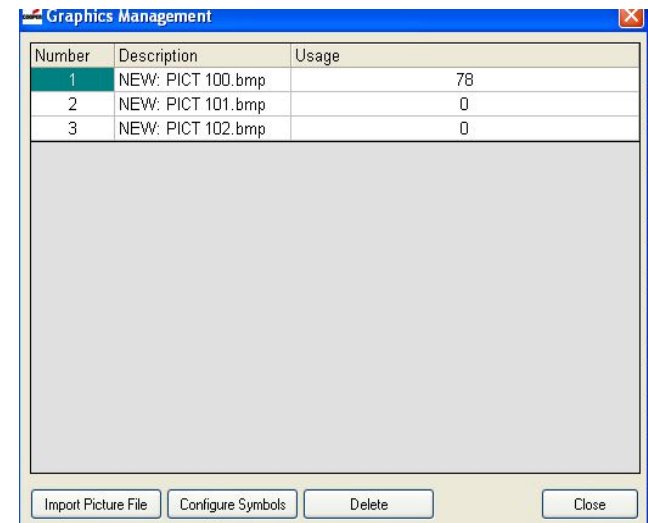
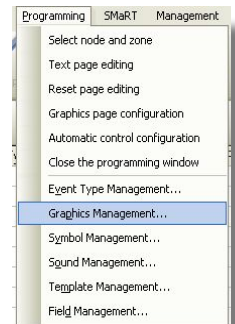
Getting Started

- PC Graphics
 - 1024 x 768 Large Font
 - Display Properties / Settings / Advanced / DPI Settings / restart
 - WinXP: Display Properties (**NOT** Appearance / Font Size)
 - Logos and graphics may not display correctly with other font sizes
- Administrator Login required
 - Install Site Graphics software
 - InsertDongle
- Open Software, log-in (3112), configure Network Manager



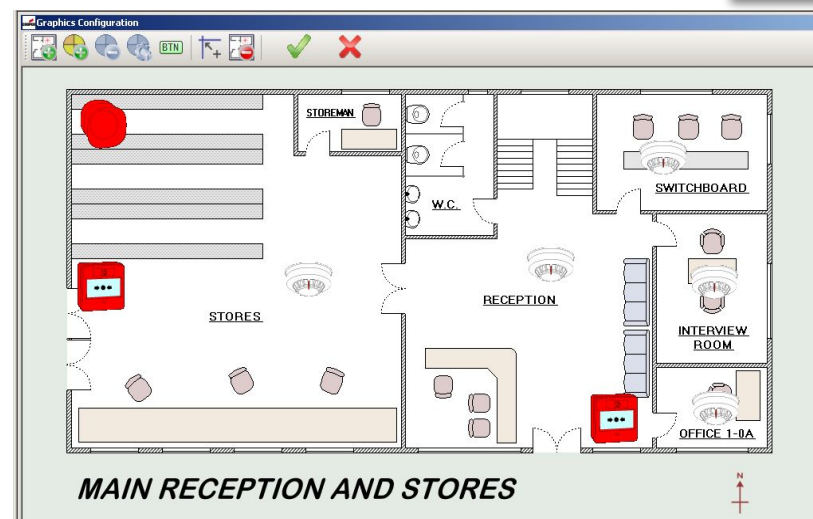
Graphics

- Format
 - BMP preferred,
 - GIF, JPG, WMG also acceptable
 - 1004 x 556 pixel
- Preparation
 - Export from AutoCAD
 - Screenshot conversion through photo packages
- Import
 - Programming / Graphics Management / Import Picture File



Setup of Input States

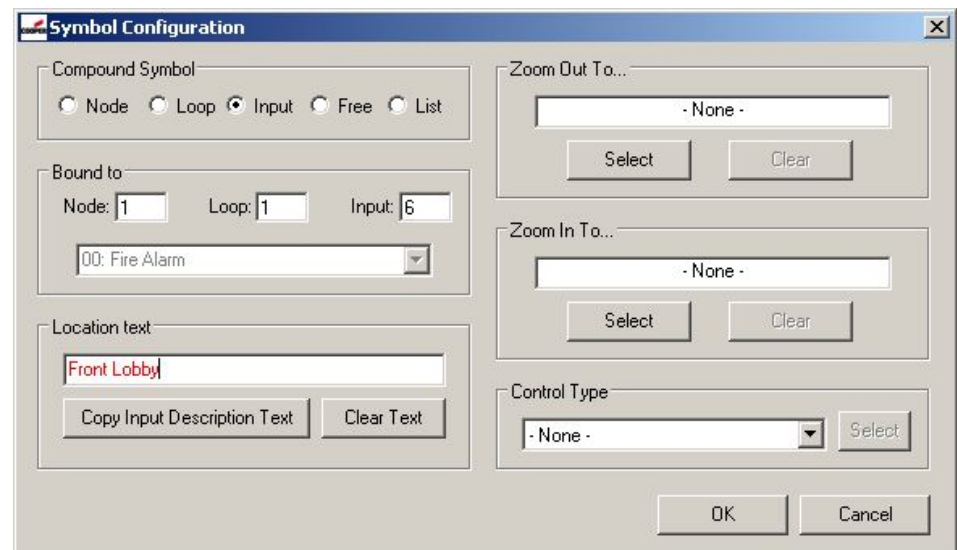
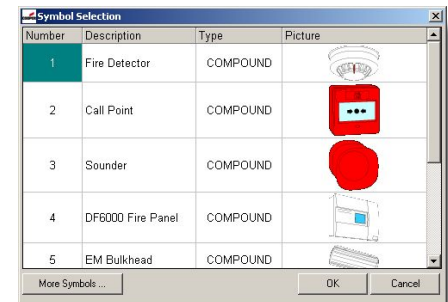
- Program Inputs
 - Event types
 - Input alarm pages template
 - Reset Page template
 - Assign graphics to inputs
 - Allocate symbols
- Dialogue Box
 - Test Maps
- Control Buttons
 - Zoom, Controls, etc



Input Programming List					
Node: 1 - Fire Alarm : Loop 1					
I/P	Event Type	Location/description	Programmed	Status	Last Edited
1	FIRE ALARM	-		Enabled	Sep 12 14:01:03 2011
2	FIRE ALARM	-		Enabled	Sep 12 14:03:48 2011
3	FIRE ALARM	-		Enabled	Sep 12 14:04:22 2011
4	FIRE ALARM	-		Enabled	Sep 12 14:06:44 2011
5	FIRE ALARM	-		Enabled	Sep 12 14:07:07 2011
6	FIRE ALARM	-		Enabled	Sep 12 14:07:14 2011
7	FIRE ALARM	-		Enabled	Sep 12 14:07:56 2011
8	FIRE ALARM	-		Enabled	Sep 12 14:08:03 2011
9	FIRE ALARM	-		Enabled	Sep 12 14:11:21 2011
10	FIRE ALARM	-		Enabled	Sep 12 14:07:27 2011
11	-	-		Enabled	

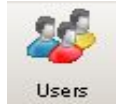
Symbols

- Simple Symbols
 - 2 pictures for ON and OFF state of device
- Compound Symbols
 - 17 pictures for multiple states of device, ie Fault, Pre alarm, etc,



Operator Access

- 2000 users max
 - Unique pass-code
- Profile
 - Definition of access rights



User Profile

User | General | History | Control | Users | Programming | Set-Up | Networks | Management

User Identity:

Access Level:

- ☐ Operator (Basic access only)
- ☐ Manager
- ☒ Engineer (Full system access)

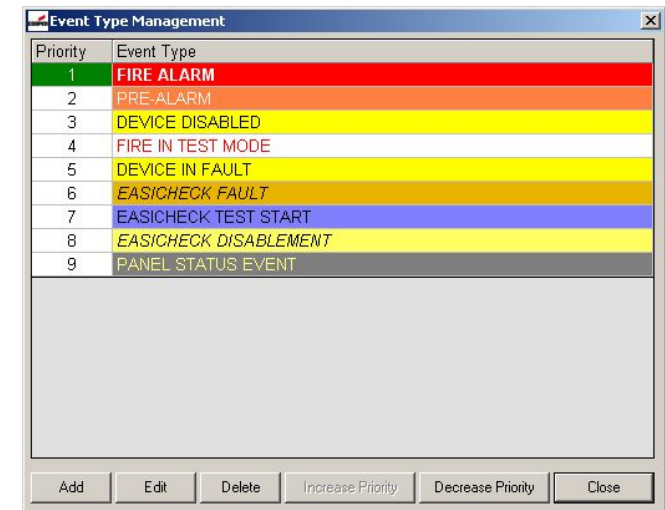
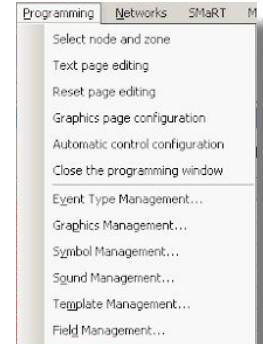
Status:

- ☒ Enabled (normal)
- ☐ Suspended

Number	User Identity	Access Level	Status	Created	Last On System
1	System Configuration Password	Engineer	Suspended	Aug 23 12:02:35 2002	
2	Cooper Default Password	Engineer	Enabled	Oct 16 17:04:36 2006	Sep 12 14:18:30 2011
3	Engineer 2	Engineer	Enabled	Sep 12 11:21:47 2011	Sep 12 11:21:56 2011

Event Types

- Priority
- Handling
 - Initial Display of alarm
 - Text and Colour
 - Sounds
 - *single or repeat*
 - *Mute on ACCEPT*
 - *WAV format*



Date	Time	Event Type	Location	Status	Reference	Accepted by
08/09/11	15:49:18	*** NON-PROGRAMMED EVENT ***	Dongle Error	WAITING	0-0-129/0	-

History

- Event Log
 - Event History
 - Control History
 - Isolation History
 - System History
 - Service History
 - User History
- Search Tool
- Print Facility



Coopers Site Graphics - v1.6.200 - Beta 7

Main Menu History SMART Management Engineer Window Help

Tools Accept Back View Forward Events Graphic Test History Control Users Program Set-Up Network Log Off

Event/Alarm History - 8 events

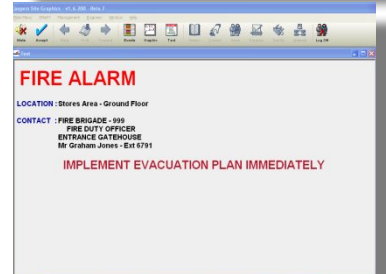
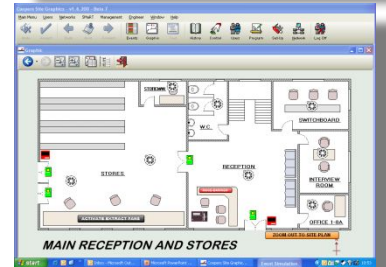
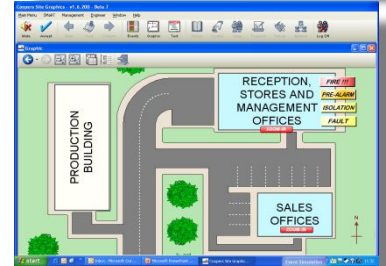
12/11/2009

Time	Event/Alarm Type	Location	Reference	Classification	Serial No.
10:33:14	FIRE ALARM	Stores Area - Ground Floor	1-1-1/0		MTE-0000001
10:33:59	FIRE ALARM RESET	Stores Area - Ground Floor	1-1-1/0		MTE-0000002
10:55:15	FIRE ALARM	Stores Area - Ground Floor	1-1-1/0		MTE-0000003
10:59:10	FIRE ALARM RESET	Stores Area - Ground Floor	1-1-1/0		MTE-0000004
10:59:22	DEVICE ISOLATED	Ground Floor Office 1-QA	1-1-5/4		MTE-0000005
11:07:14	DEVICE ISOLATED	Ground Floor Office 1-QA	1-1-5/4		MTE-0000006
11:10:49	DEVICE ISOLATED	Ground Floor Office 1-QA	1-1-5/4		MTE-0000007
11:16:39	DEVICE ISOLATED	Ground Floor Office 1-QA	1-1-5/4		MTE-0000008

start | Inbox - Microsoft Out... | Microsoft PowerPoint... | Coopers Site Graphics... | Event Simulation | 11:27

Sample Screens

- Site Image
- Site Plan
- Floor Plan
- Text Screens
- Combined Screens



ZOOM



Mute

Accept

Back

Hold

Forward

Events

Graphic

Text

History

Control

Users

Program

Set-Up

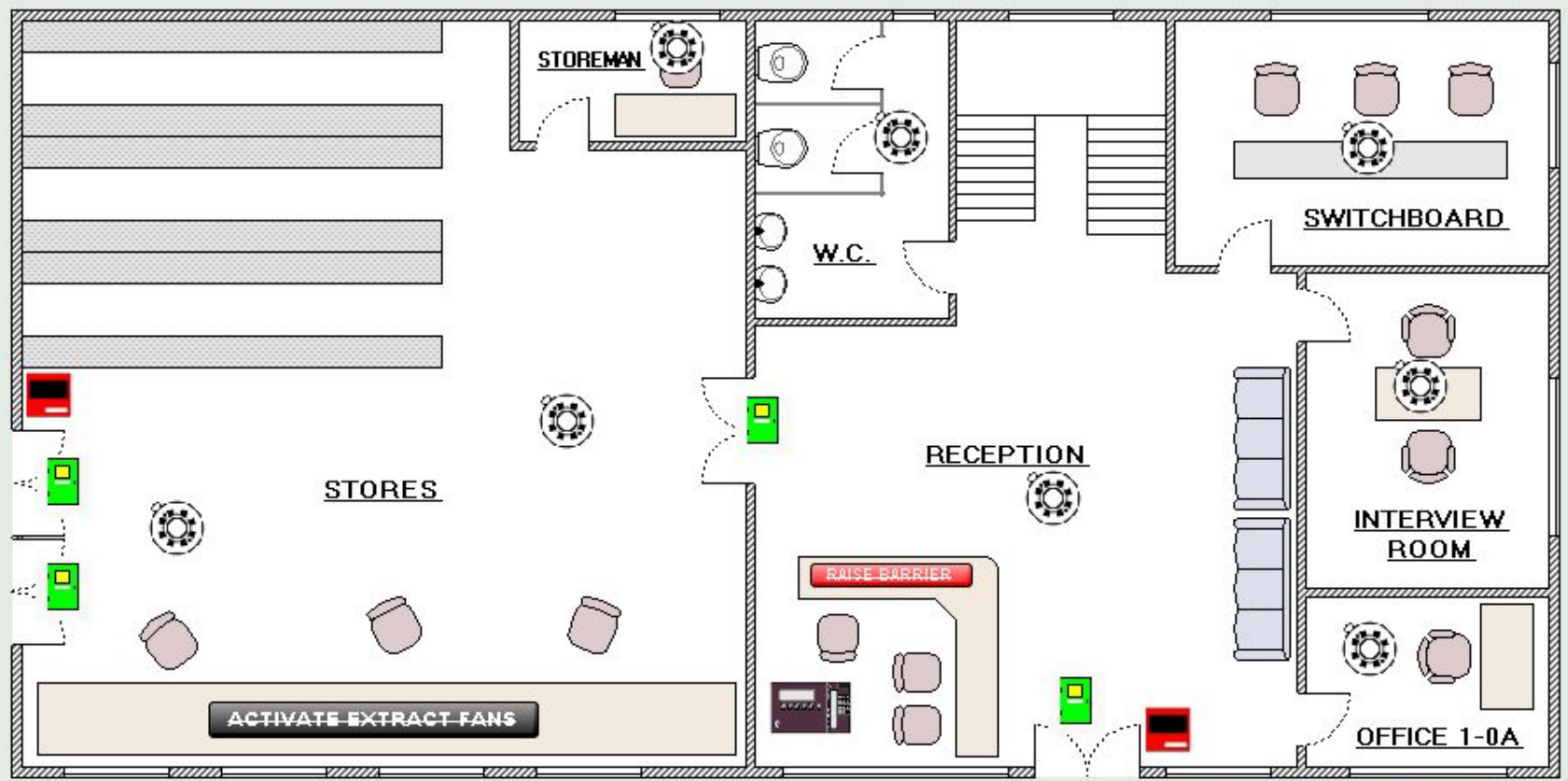
Network

Log Off

Graphic

Navigation icons: back, forward, zoom in, zoom out, list, and a door icon.





MAIN RECEPTION AND STORES

ZOOM-OUT TO SITE PLAN



FIRE ALARM

LOCATION : Stores Area - Ground Floor

CONTACT : FIRE BRIGADE - 999
FIRE DUTY OFFICER
ENTRANCE GATEHOUSE
Mr Graham Jones - Ext 6791

IMPLEMENT EVACUATION PLAN IMMEDIATELY



Text

DEVICE ISOLATED

LOCATION : Ground Floor Office 1-0A

DEVICE : 1-1-5/4

THIS DETECTION DEVICE HAS BEEN DISABLED AND CAN NO LONGER SIGNAL A FIRE CONDITION



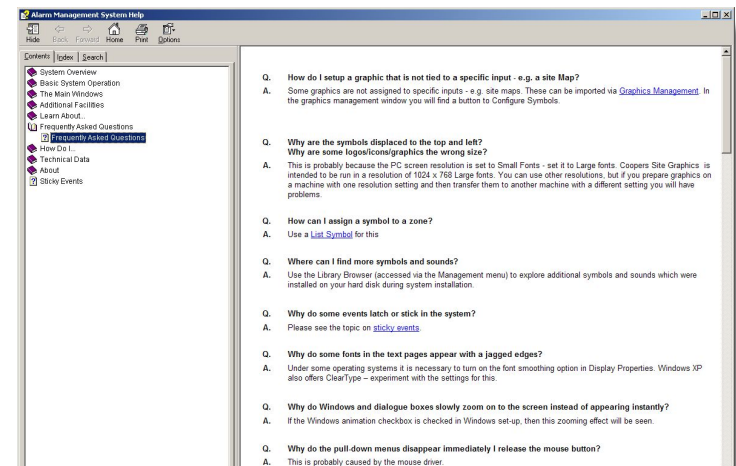
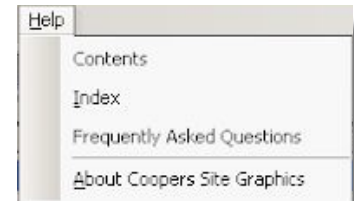
Setup Steps

- Start Communications
- Prepare Maps and import
- Assign Graphics
- Add Symbols
- Use Dialogue Box to test maps
- Add Control Buttons for Zoom In/Out or Controls if required for multiple input states - e.g. detector fire, fault, disable, etc



Fault Finding

- No Communication
 - Check Network Text Box for comms
 - Configure Network Manager
 - Insert Dongle
 - Configure Panel for 'Panel X of Y'
- Event Graphics will not display in alarm
 - Check Event Priority
- Functions Missing
 - Enter the relevant programming screen first
 - Log on with engineer code
- Misc
 - Check graphics are 1004 x 556 pixels
 - Ensure your PC has Admin rights
 - Use the comprehensive Help files



Thank you!