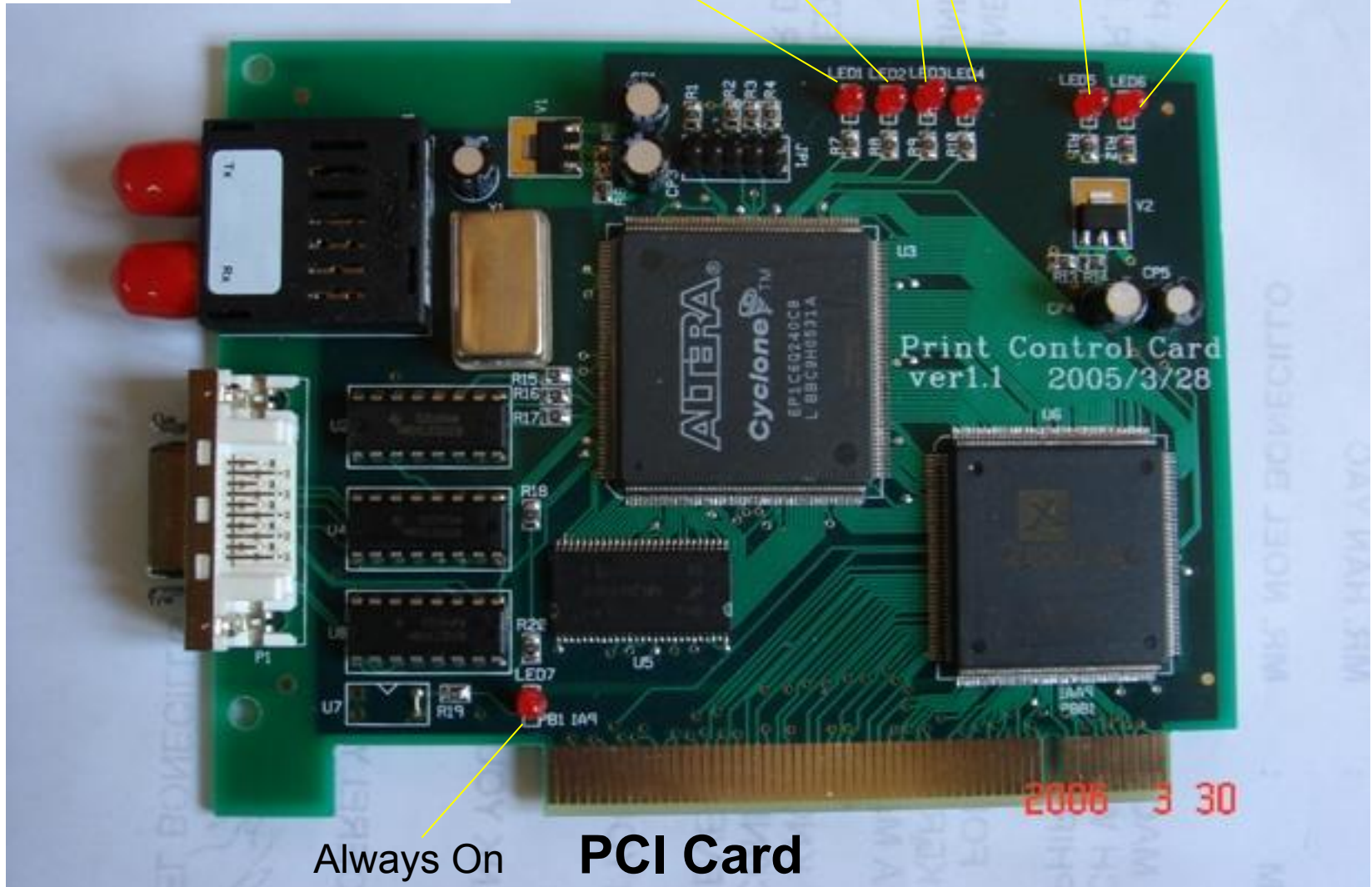


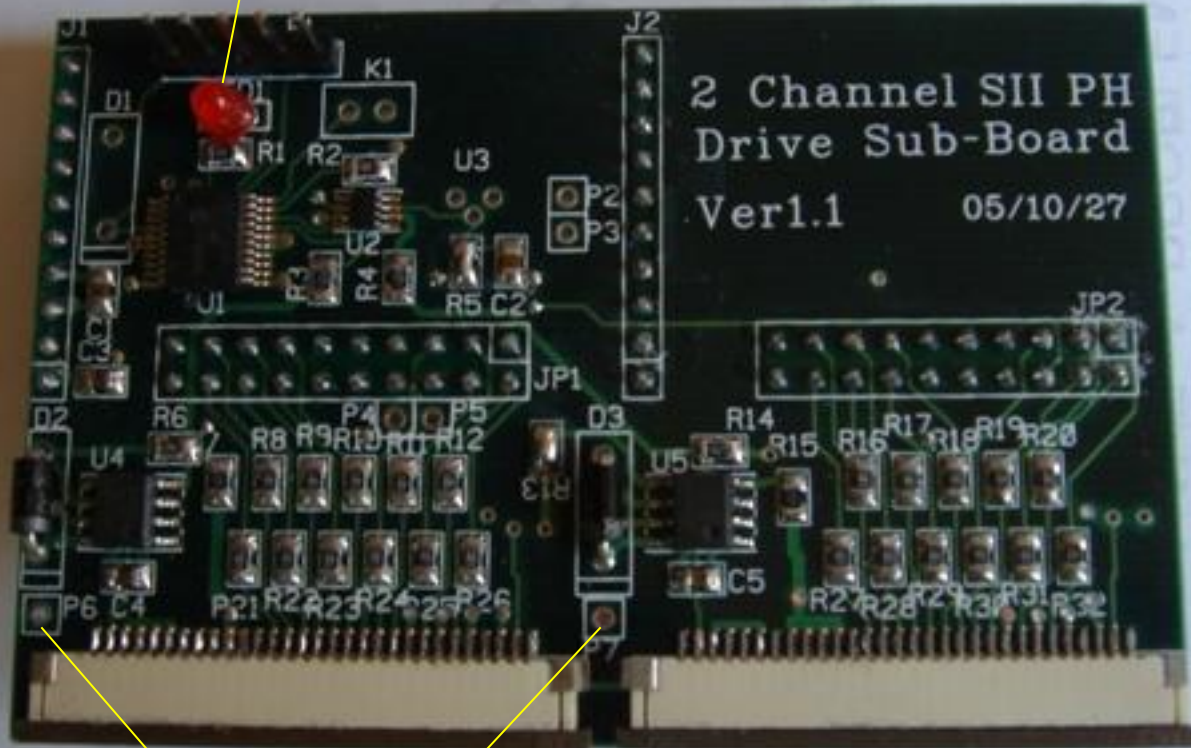
**Printhead Board**

P.S.: When X and Y motor is working, corresponding LED will be on

X Motor Working LED	Y Motor Working LED	Operation LED (Always On)	3.3V LED	5V LED
LED1	LED2	LED3	LED4	LED5, LED6



Operation LED



**Printhead Card**

Printhead Voltage Checking Point

2006 3 30



# Servo Board

12V LED

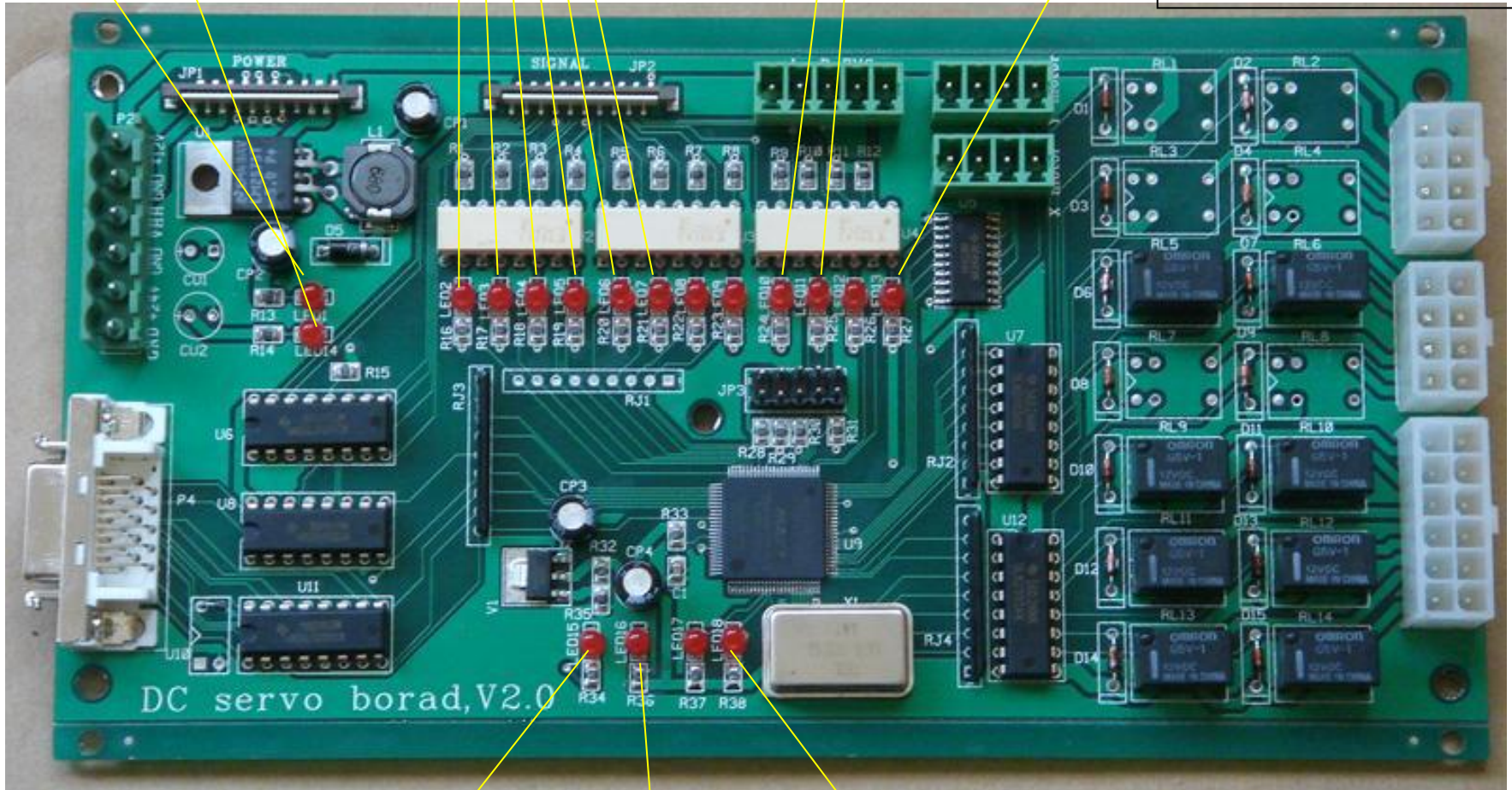
24V LED

6 Color Ink  
Supply LED  
(On when pumping)

Left and Right  
Limit Switch  
Indication LED

Emergency  
Stop LED

P.S.: Left and Right  
Limit Switch and  
Emergency Stop LED  
Will On When They  
Are Pressed



5V LED

3.3V LED

Operation LED  
(Flashing)