

# ***WHAT'S ON THE BOX ?***



Конкурсная работа

«Презентация к уроку»

Косяковой Елены Александровны  
учителя английского языка  
МОУ СОШ с.Дульдурги



# ***Activities***

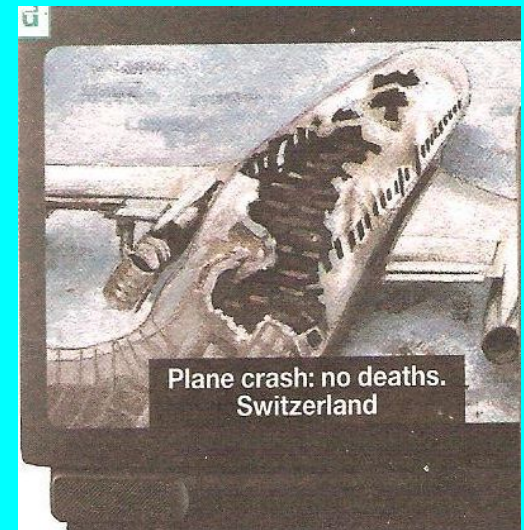
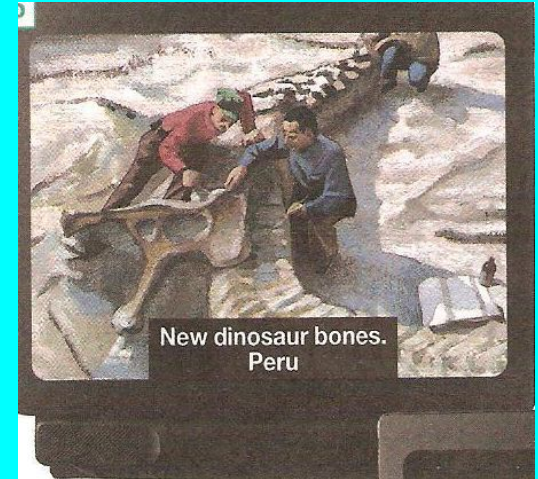
- ***Warm-up***
- ***Speaking***
- ***Listening***
- ***Writing***
- ***Reading***
- ***Homework***





# ***Unscramble the words:***

- s,n,e,w
- i,m,s,c,u,
- i,m,f,l
- o,t,n,o,a,c,r,
- s,i,e,r,s,e,
- t,m,l,o,c,s,
- z,q,l,u,
- News
- Music
- Film
- Cartoon
- Series
- Sitcom
- Quiz



## The types of TV programmers

```
graph TD; A[The types of TV programmers] --- B[Phone – in]; A --- C[Show]; A --- D[Soap opera]; A --- E[Game show/quiz]; A --- F[Cartoon]; A --- G[Series]; A --- H[Movie film]; A --- I[The news]; A --- J[Wildlife programme]; A --- K[Documentary]; A --- L[Music show]
```

Phone – in

Soap opera

Show

Game show/quiz

Music show

Cartoon

Documentary

Series

The news

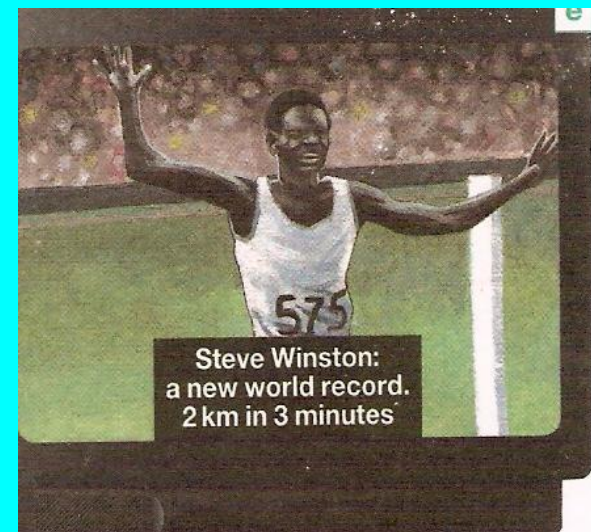
Movie  
film

Wildlife programme



# TV in Britain

- Over 99 per cent of British homes have a TV and the average person watches “the box” 26 hours a week.
- There are 4 TV channels in Britain: BBC1, BBC2, ITV and Channel 4.
- BBC1 and BBC2, the two state channels, do not show adverts.
- ITV and Channel 4, the two independent channels, do show adverts.
- Only 8 per cent of British homes subscribe to satellite or cable TV.



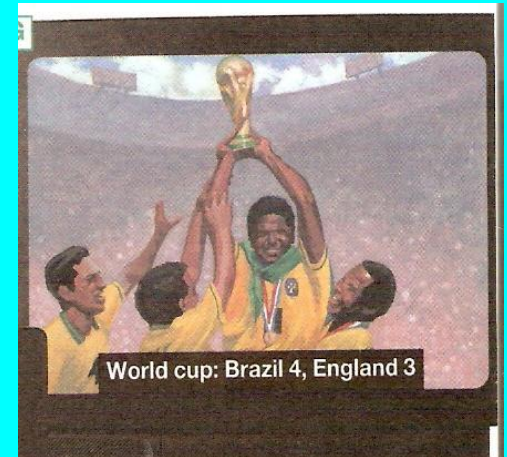
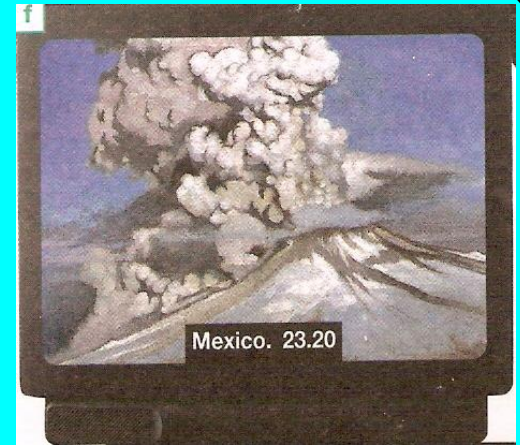
# *The TV guide*

BBC1	BBC2	ITV	Channel4	Channel5	Sky movies
<p><b>The National</b>  <b>Lottery Stars</b>  (7.00–8.30 pm)  Glaswegian rock band Texas perform live in the studio.</p>	<p><b>Residents</b>  (7.5–8.0 pm)  Elspeth throws a dinner party for the feuding Nut and Singh families that ends in more than one revelation, prompting Hilary to take an overdose.</p>	<p><b>Cinderella</b>  (6.50–7.30 pm)  Walt Disney's version of the famous fairy tale.</p> <p><b>Food and Drink</b>  (7.30–8.00 pm)  Cooking tips, recipes, features and consumer news from the team of top television chefs.</p>	<p><b>Politics Isn't Working: More Unequal Than Ever</b>  (7.15–8.5 pm)  Andrew Dilnot, Director of the Institute for Fiscal Studies, reveals the true state of inequality in Britain today and asks why politicians of all major parties are unwilling to confront the problem.</p>	<p><b>Greed</b>  (6.45–7.30 pm)  Jerry Springer hosts the quiz in which contestants vie for a potential prize of £1 million.</p> <p><b>Mountain Men</b>  (7.30–8.20 pm)  The extraordinary history of Alaska's Mount McKinley.</p>	<p><b>It Could Happen To You</b>  (7.00–8.50 pm)  Nicolas Cage, Bridget Fonda and Rosie Perez star in this irrepressible romantic comedy inspired by the true story of a humble cop who leaves a \$2 million tip to a hard-luck waitress.</p>



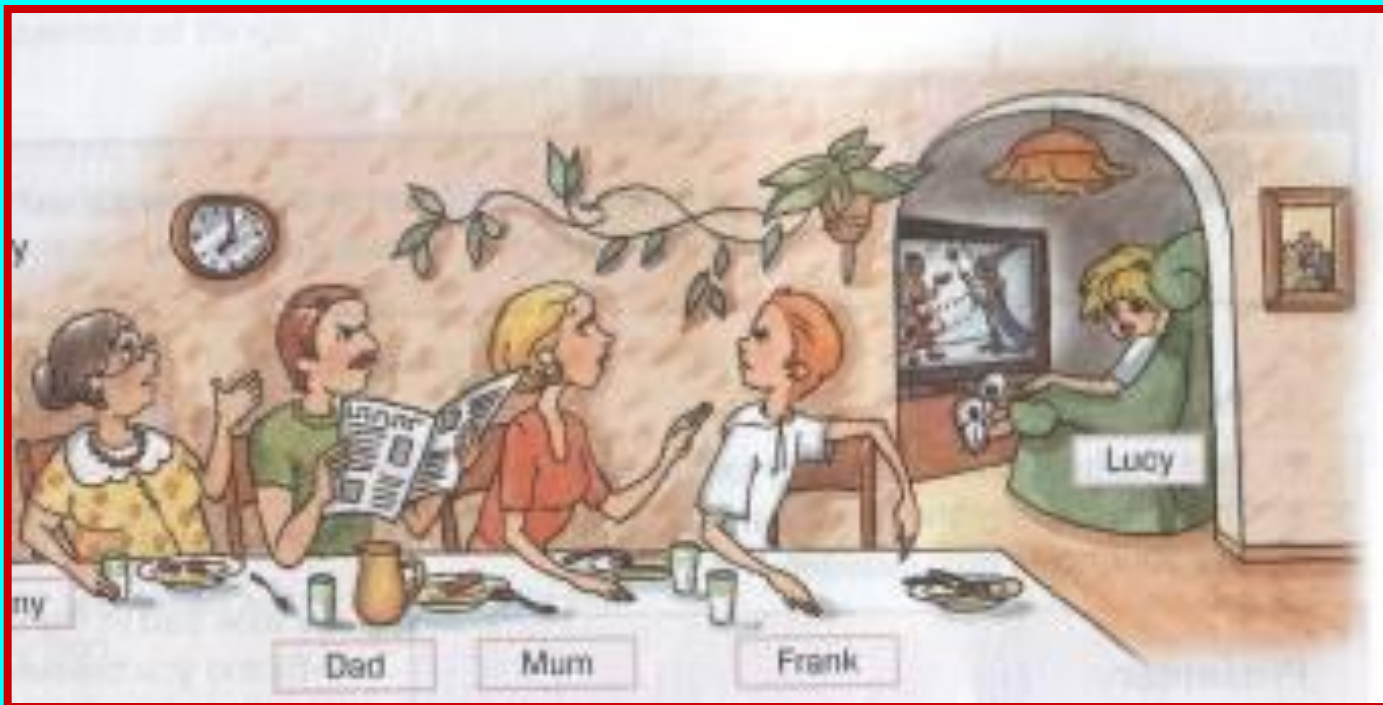
1. Phone – in
2. Game show
3. Show
4. Soap opera
5. Cartoon
6. Sitcom
7. Series
8. Movie/film
9. The news
10. Wildlife programme
11. Documentary
12. Music show

- -----
- Greed
- Food and Drink
- Residents
- Cinderella
- -----
- -----
- It could happen to you
- -----
- Mountain Men
- Politics Isn't Working
- The National Lottery Stars



# *Listening*

- Say which programme the family have decided to watch tonight.



- Fill in the chart using :  
 + for the programmes people prefer  
 -for the programmes people don't want to see



	Natio-n al gallery	Resi-d ents	Cinde- rella	Food and Drink	Politic s...	Greed	Moun- tain Men	It Could ...
Frank								
Grandma								
Mother								
Lucy								
Father								



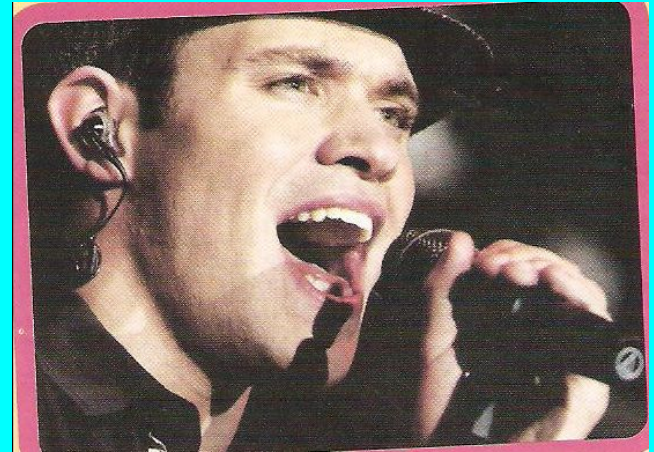
# ***The effects of television***

<i><b>Positive</b></i>	<i><b>Negative</b></i>



# *Reading*

- Many people now spend more time watching TV than doing anything else.
- Researchers in the USA have estimated that when most students leave school they have spent 11,000 hours in the classroom and 22,000 hours watching television.
- But what effect does this have?



# Homework

## Students may choose:

- *Write an essay: “Television:for and against”*
- *Make the presentation: “TV or not TV”*

