

WHAT TIME IS IT?



1



4



5



2



3



7



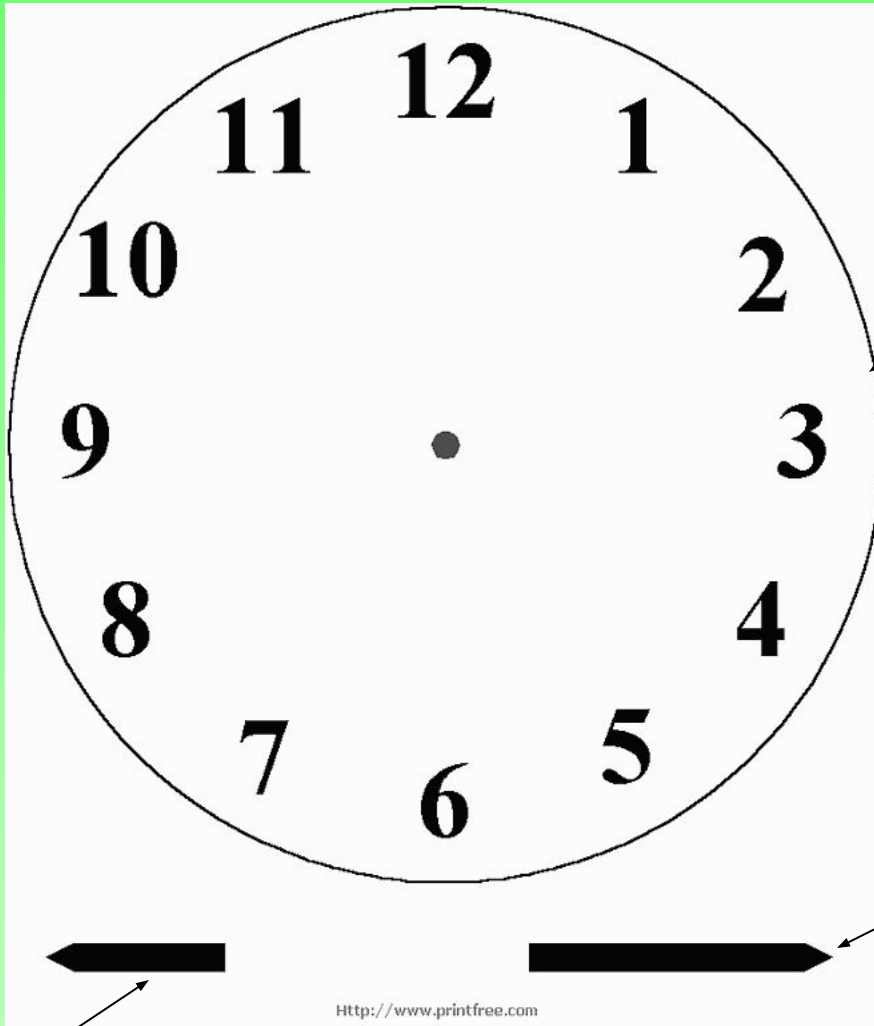
6



clocks

watches



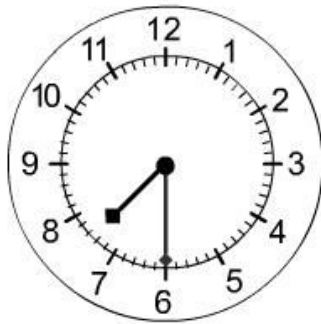


FACE

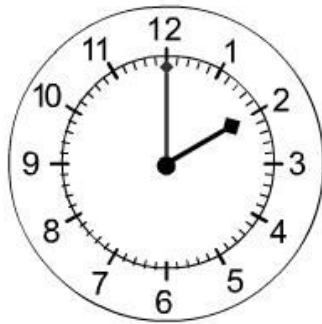
LONG HAND

SHORT HAND

[Http://www.printfree.com](http://www.printfree.com)



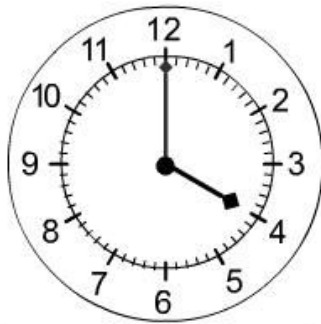
:



:



:



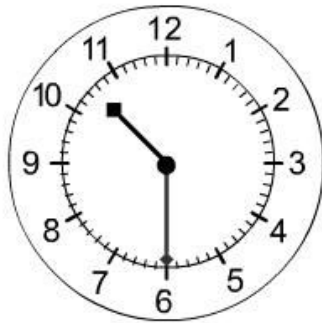
:



:



:



PAST



ten past two



twenty five **past** four



quarter **past** three



half **past** five



half **past** two



quarter **past** five

TO



twenty five **to** nine



ten **to** seven



twenty **to** nine



ten **to** twelve



quarter **to** nine