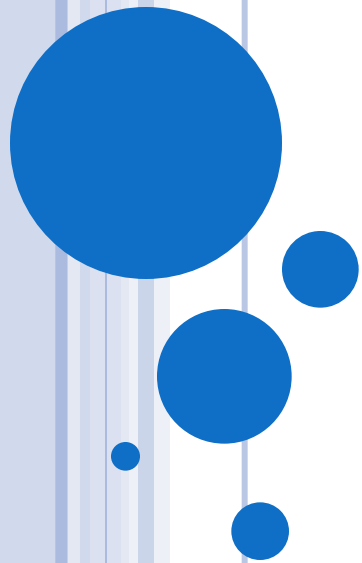


THE PRESENT SIMPLE



USE 1: Repeated Actions

Use the **Present Simple** to express the idea that *an action is repeated or usual*. The action can be a habit, a hobby, a daily event, a scheduled event or something that often happens



EXAMPLES

Subject + (Verb) + (s, es) + Object

- I play tennis.
- She does not play tennis.
- The train leaves every morning at 8 am.
- The train does not leave at 9am.



USE 2: FACTS OR GENERALIZATIONS

The Present Simple can also indicate the speaker believes that a fact was true before, is true now, and will be true in the future. It is not important if the speaker is correct about the fact. It is also used to .make generalizations about people or things



EXAMPLES

Subject + (Verb) + (s, es) + Object

Cats like milk. -

.- Birds do not like milk

Windows are made of glass. -

.- Windows are not made of wood



GRAMMATICAL VIEW

Present Simple, third person singular

:Note

he, she, it

:A ,in the third person singular the verb : **always ends in S**

he want S

she need S



.BAdd es :to verbs ending in

x

he fixes

sh

it pushes

ss

he passes

ch

she catches

o

He goes



:C Verbs ending in ~~V~~ the *third person* changes the; ~~V~~ to ies

fly → *flies*

cry → *cries*

:Exception

: If there is a vowel before the ~~V~~

play → *plays*

pray → *prays*



- *Negative and question* forms use DOES (=the third person of the auxiliary 'DO') + the infinitive of the verb. He wantss. Does he want? He does not want.



:Examples

. 1. Third person singular with s or es

- a. *He goes* to school every morning.
- b. *She understands* English.
- c. *It mixes* the sand and the water.
- d. *He tries* very hard.
- e. *She enjoys* playing the piano.



:The *present simple* is used

A.to express *habits*, general *truths*, repeated actions
:or unchanging situations, *emotions* and wishes

▪I smoke (*habit*); I work in London (*unchanging situation*);
London is a large city (*general truth*).

.

He *drinks* tea at breakfast-

.She only *eats* fish-

They *watch* television regularly-



:B. to give instructions or directions

- *You walk for two hundred metres, then you turn left.*
- -You *take* the No.6 bus to Watney and then the No.10 to Bedford.
- *Open* the packet and *pour* the contents into hot water-



:C. to express fixed arrangements, *present* or *future*

-Your exam starts at 09:00.

.The bell rings at 8:00-

The bus arrives at 7:00



TIME EXPRESSIONS

There are **time expressions** that we use only with the **:Present Simple** and they are

Every day, every Friday, every week, every month, every summer, .1
.every month, every year, always, usually, etc

All the time.2 .

.I go to school every day

.He visits me, every summer



ACTIVITIES

1. Ask your friends questions about what they do at different times. Also ask about their families.

- "What time *do you get up?*" - "When *do your brothers go to bed?*"

Write down the questions and give them to your teacher for checking.



Write the questions for the following answers. (Present Simple)

. _____ ?

.I work in a bank

? _____

.He lives in an apartment building



Put in : do/don't/does/doesn't .

?Excuse me, _____ you speak English

.Where's Ann? I _____ know .

George is a good tennis player but he _____ play very often

