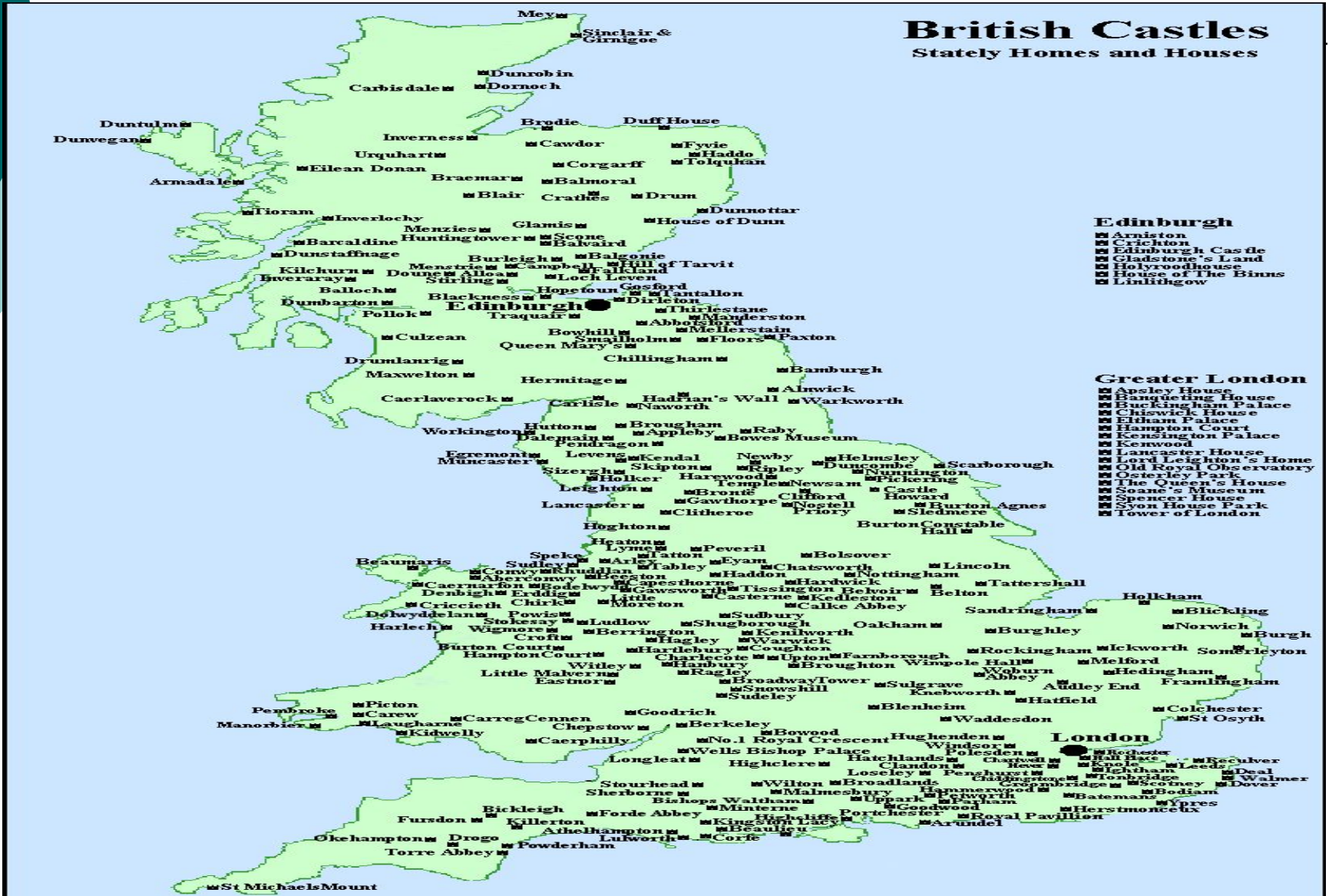


The History and mystery of British Castles



Map of castles in Great Britain





Aim: to find out the role of castles in English history and contemporary world.

Problems:

- -to study the history of their appearance,
- - to investigate the purpose of their building
- - to trace their further development
- - to analyse their role in contemporary world
- - to find the most interesting information about castles
- - to choose the most popular
- - to find out some legends about mysterious events which are connected with castles



Periods when castles appeared:

- The Bronze Age (1800-600BC)
- The Iron Age and the Romans (600BC-400AD)
- The Dark Ages (400AD-1066AD)
- The Middle Ages (1066-1500)



Purposes of castles

- for living
- for trading
- for defending of tribes
- as shelter from cold and animals
- a meeting place
- a symbol of Power

Warwick castle



History of Warwick castle, its construction



Warwick Castle is one of the most famous and daunting castles in the World. It was used as a fortification until the early 17th century, when [Sir Fulke Greville](#)

Warwick Castle is one of the most famous and daunting castles in the World. It was used as a fortification until the early 17th century, when Sir Fulke Greville

Windsor castle



Reconstruction

William III

Transformed castle in
gothic style



Reconstruction

George IV



**Created the present
appearance of the Upper**



Queen Elizabeth II



Nowadays Windsor castle is one of the official residences of Her Majesty Queen Elizabeth II. The Queen is officially in residence at a Windsor castle twice a year : in April and also in June.

Queen Mary's dollhouse



The Tower of London



Location



The Tower of London is situated on Tower Hill



Purposes of the Tower of London

- A palace
- A prison
- A fortification
- A zoo
- A museum

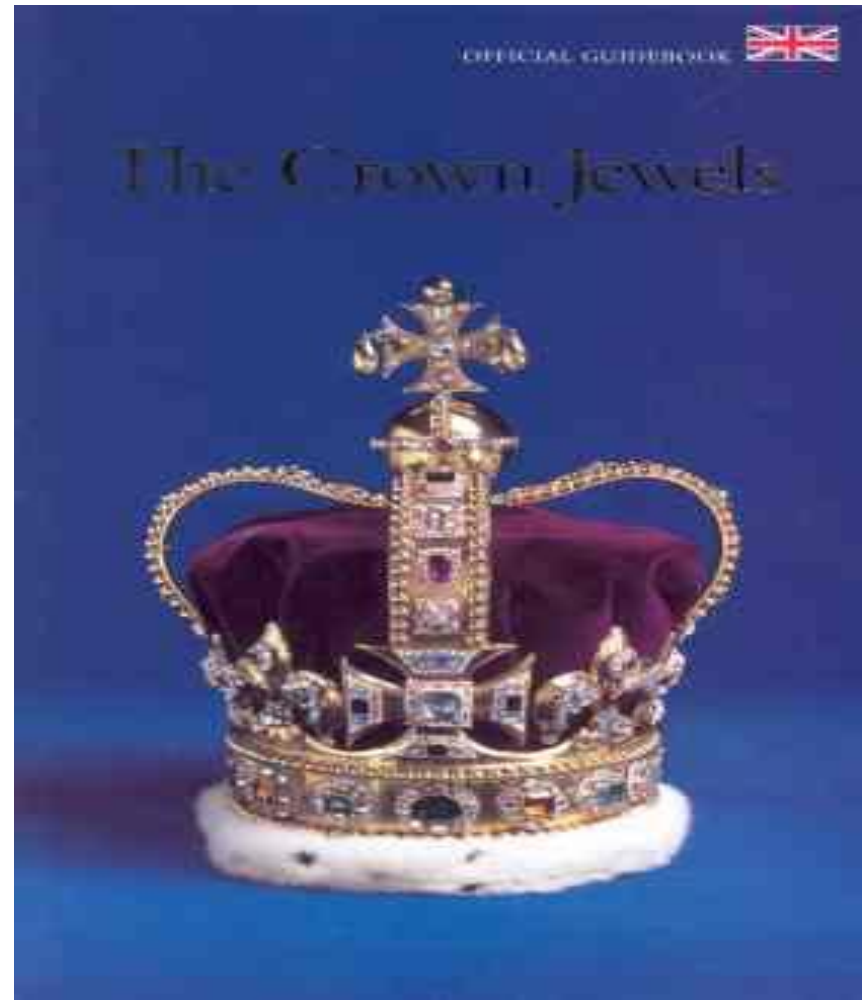
Exhibitions

Exhibition in the White Tower

The crown Jewels exhibition



Mint of the Tower of London



Edinburgh Castle



Ghosts of Edinburgh Castle

The piper's ghost



The drummer's ghost



“Greyfriars Booby”



Edinburgh has many associations with dogs, including the famous "Greyfriars Bobby".

Ghosts of the Tower of London

Lady Jane Grey



Anne Boleyn



Ghosts of the Tower of London

HENRY VI



Walter Raleigh





The most popular:

- The Tower of London 165,000
- Windsor Castle 90,500
- Warwick Castle 90,500
- Scotland Edinburgh Castle 74,000
- Wales Cardiff Castle 15,000

Appearance:

- Before Christ



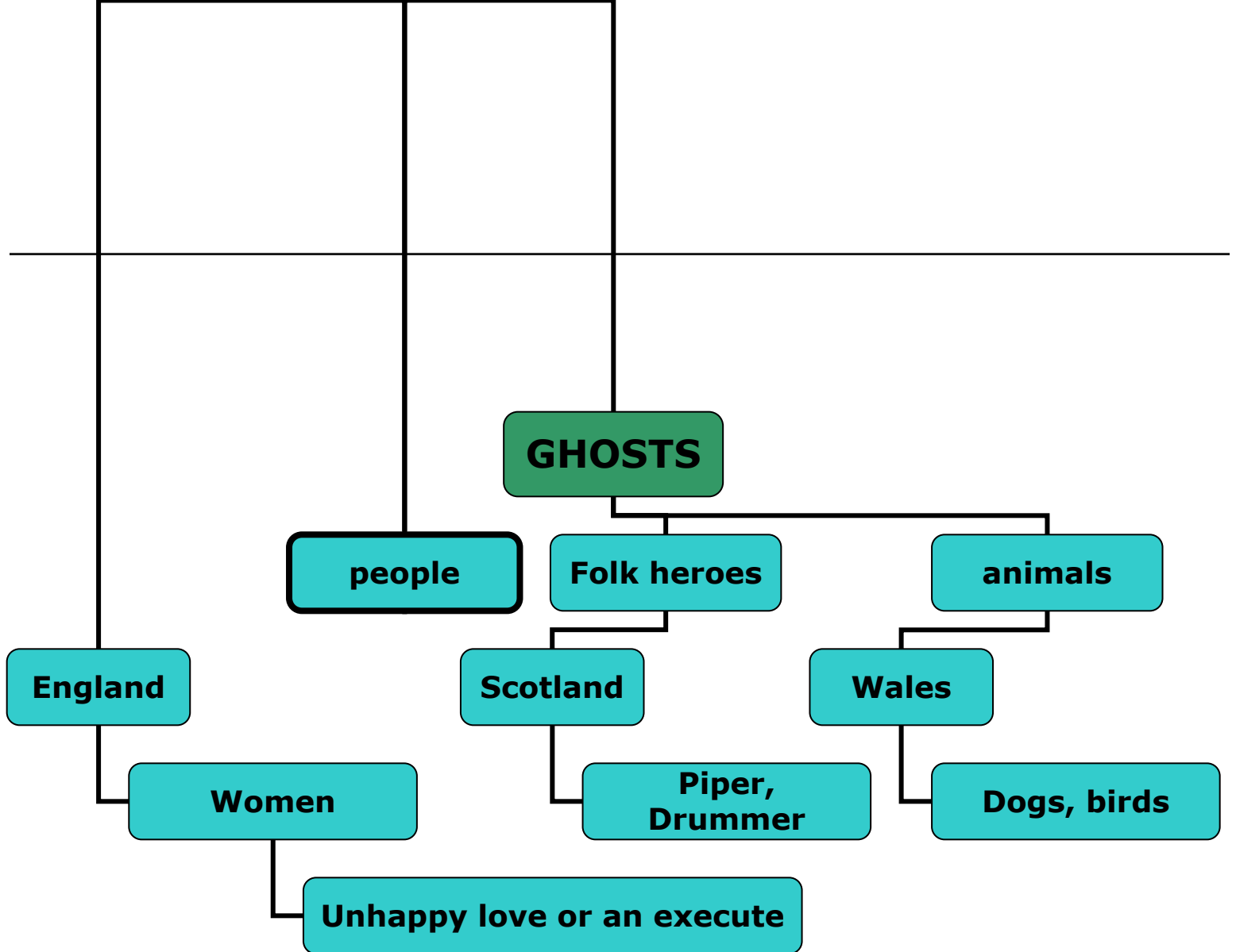
- Middle Ages



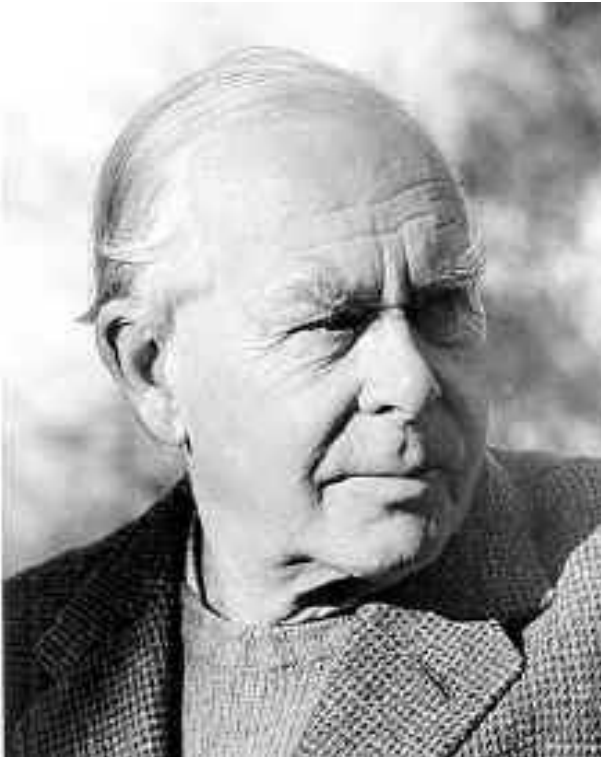


Our survey

We asked some pupils what associations they had when we said “BRITAIN” and 11% of pupils named “CASTLE” as a main part of the country.



John Mostin theory:



We found an answer in article of English psychologist. It was said that British people are very superstitious. They believe in ghosts and see them.



Thank you

For your attention