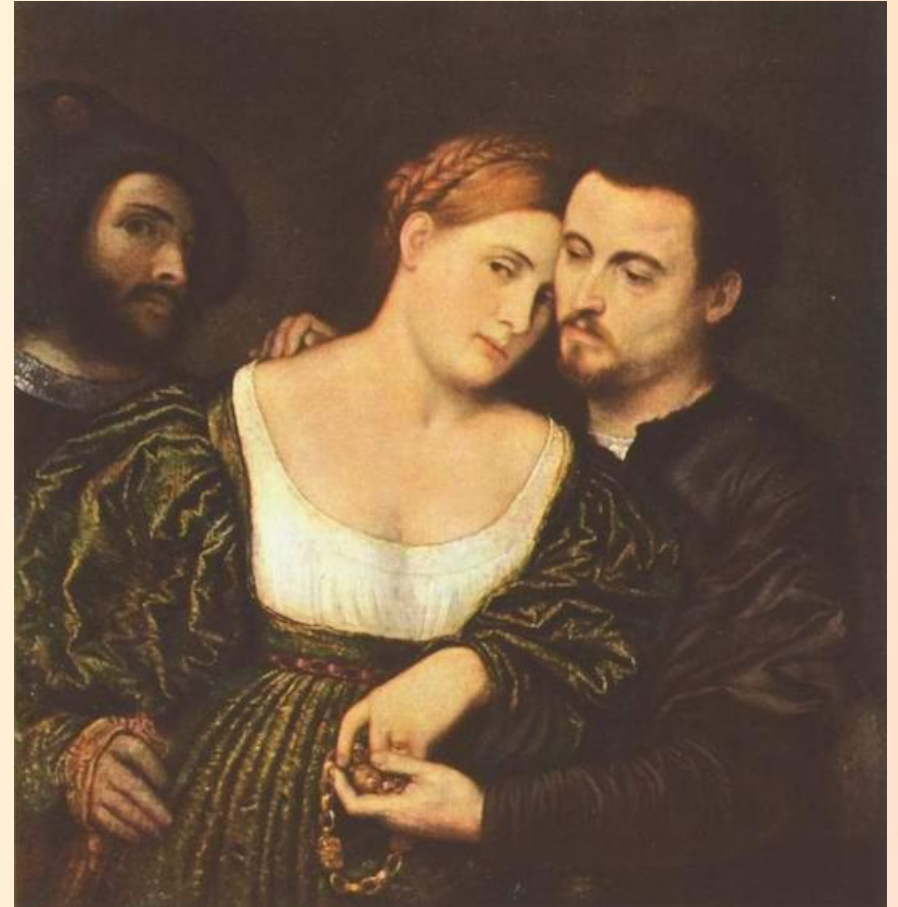


A close-up photograph of pink cherry blossoms with yellow stamens, serving as a background for the text.

# St. Valentine's day quiz

# 1. Who was St. Valentine?

- a) A member of the Roman Senate
- b) An emperor of Rome
- c) A Roman martyr
- d) A soldier



## 2. What is the love story behind St. Valentine's Day?

- a) On February 14th, Valentine littered the streets with red hearts exclaiming his love for his girl
- b) On February 14th, Valentine was put to death, but left a note for his love, a jailer's daughter, signed "From Your Valentine"
- c) On February 14th, Valentine handed out flowers to all of Rome's women
- d) On February 14th, Valentine got married to his true love from childhood



### 3. Who is Cupid?

- a) In Roman mythology, he is the son of Venus
- b) In Greek mythology, he is the child of love
- c) In Norse mythology, he is a winged child of Zeus
- d) In Roman mythology, he is the king of other gods and goddesses





4. We associate love with the heart, but in Shakespeare's time it was not always so. In what other organ did love reside?

- A) Kidneys
- B) Liver
- C) Pancreas
- D) Spleen



5. St. Valentine is indeed the patron saint of love, but he has many other duties. He is also the patron saint of:

- a) Actors
- b) Bee keepers
- c) Orphans
- d) Vinegar makers



6. Every Valentine's Day, which city is sent lots of letters addressed to Juliet?

- a) New York
- b) Manchester
- c) Verona





## 7. When did Valentine's cards become popular in the UK?

- a) 15th Century
- b) 16th Century
- c) 17th Century





8. What fruit or vegetable is often called a love-apple?

- a) An apple
- b) A peach
- c) A tomato



9. When was February 14 set aside to honor St. Valentine?

- ☐ a) In 1796
- ☐ b) In 496 AD
- ☐ c) In 1400



## 10. How did Valentine's Day start?

- a) It originated from a Roman festival
- b) The government decided we should celebrate it
- c) It originated from America





11. The emperor outlawed marriage for young men in hopes of building a stronger military base. What did Valentine do about it?



- a) He chose to marry young couples secretly.
- b) He left the military to get married.
- c) He remained single all his life.

12. What did the Emperor do when he found out what Valentine did?

- a) He sent him a Valentine card.
- b) He had him put to death.
- c) He changed the law.





13. Another legend is that Valentine was an imprisoned man who...

- a) escaped on February 14th to get married.
- b) fell in love with his jailor's daughter.
- c) sent a box of chocolates to his mother.





**1. It is love that makes  
the world go round.**

**2. Love cannot be  
forced.**

**3. Love is blind as well  
as hatred.**

**4. Love will creep  
where it may not go.**

• **Для любви нет  
преград.**

• **Любовь побеждает  
все.**

• **Любовь зла –  
полюбишь и козла.**

• **Насильно мил не  
будешь.**