

A panoramic view of the Seattle skyline, featuring the Space Needle prominently in the center. The city is surrounded by green hills and mountains under a clear blue sky. The word "Seattle" is overlaid in a large, bold, black font on the right side of the image.

Seattle

A background image of the Seattle skyline, featuring the Space Needle prominently in the center. The city is surrounded by mountains, and the sky is a pale blue with some light clouds.

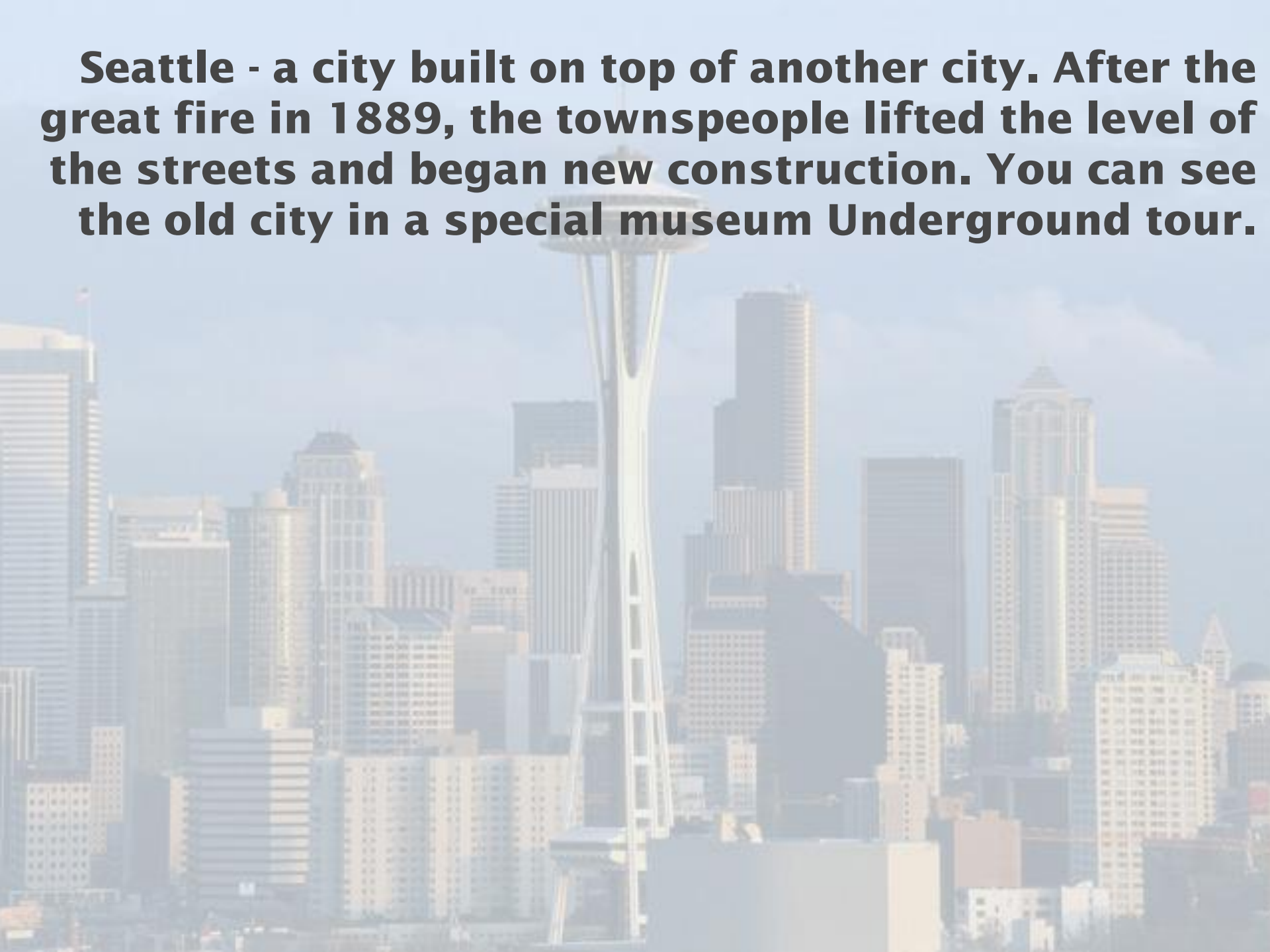
Seattle

is a major coastal seaport and the
seat of King County, in the U.S.
state of Washington.

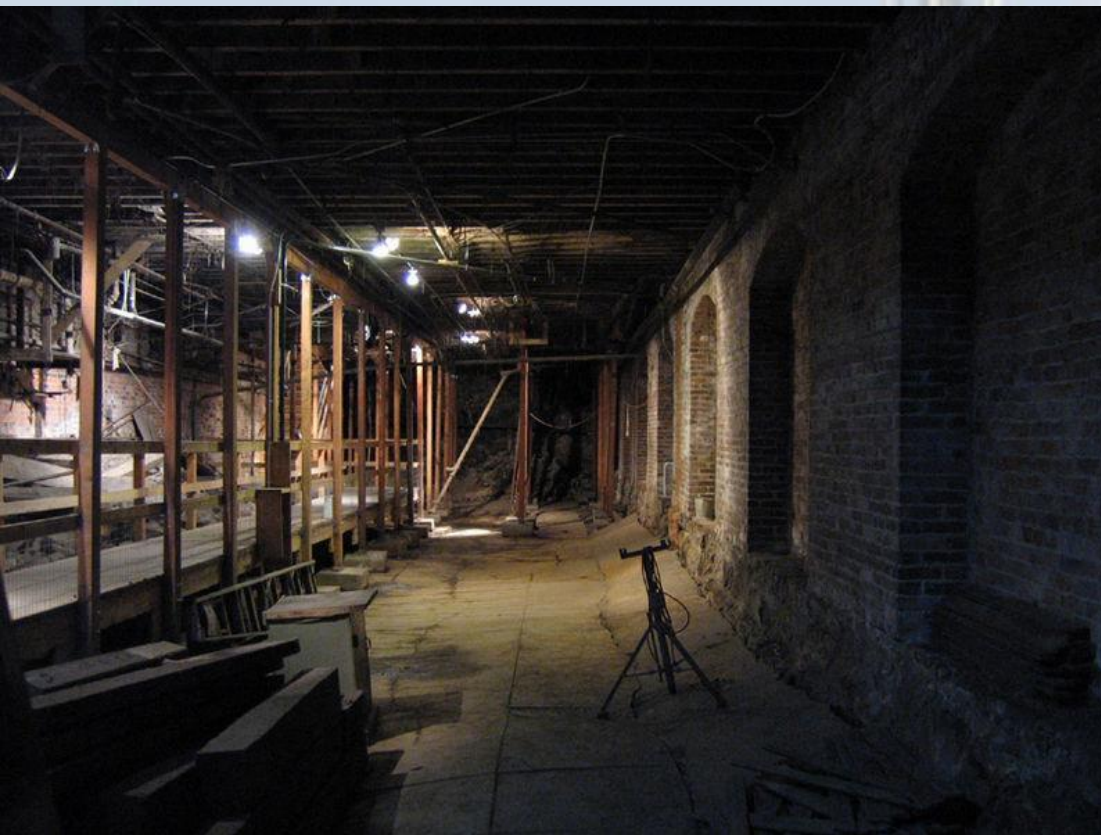
Downtown Seattle and a ferry at the Central Waterfront.



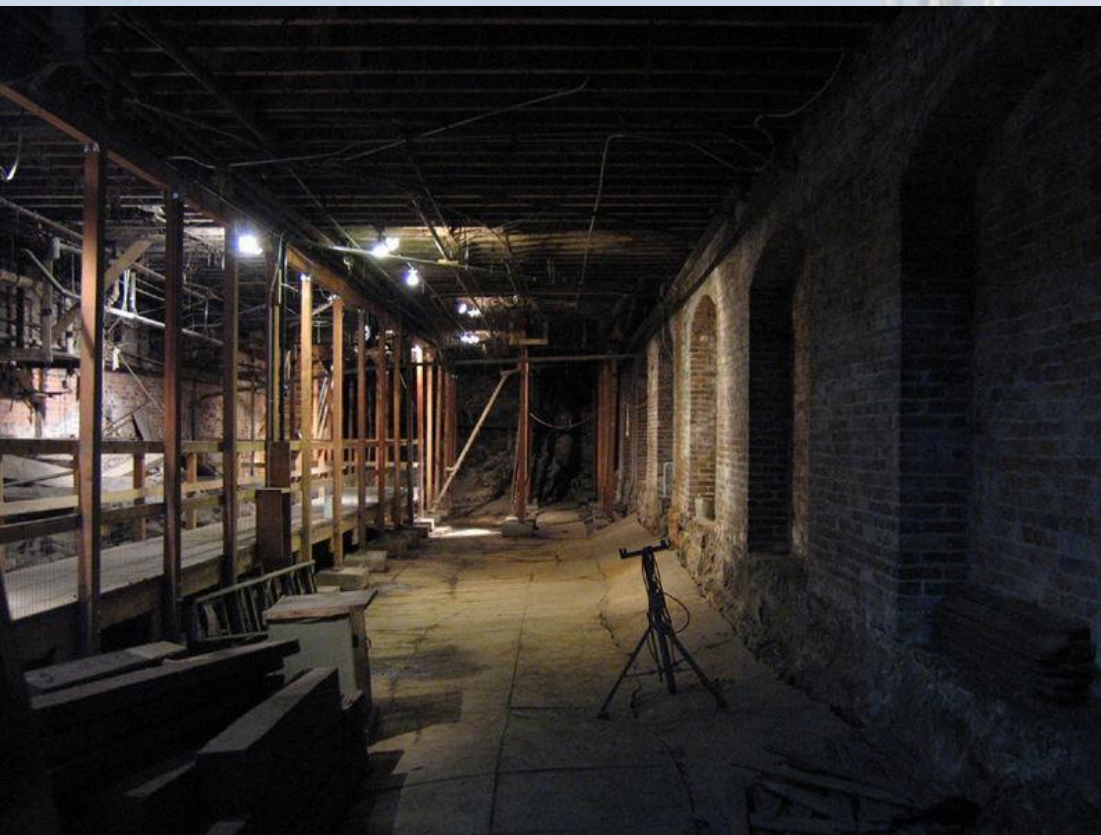
Seattle - a city built on top of another city. After the great fire in 1889, the townspeople lifted the level of the streets and began new construction. You can see the old city in a special museum Underground tour.



Seattle - a city built on top of another city. After the great fire in 1889, the townspeople lifted the level of the streets and began new construction. You can see the old city in a special museum Underground tour.



Seattle - a city built on top of another city. After the great fire in 1889, the townspeople lifted the level of the streets and began new construction. You can see the old city in a special museum Underground tour.



Downtown Seattle averages 71 clear (sunny) days a year, with most of those days occurring between May and September



Between October and May, Seattle is mostly or partly cloudy six out of every seven day



The Evergreen Point Floating Bridge is the longest floating bridge on Earth at 2,310 metres and carries State Route 520 across Lake Washington from Seattle to Medina.





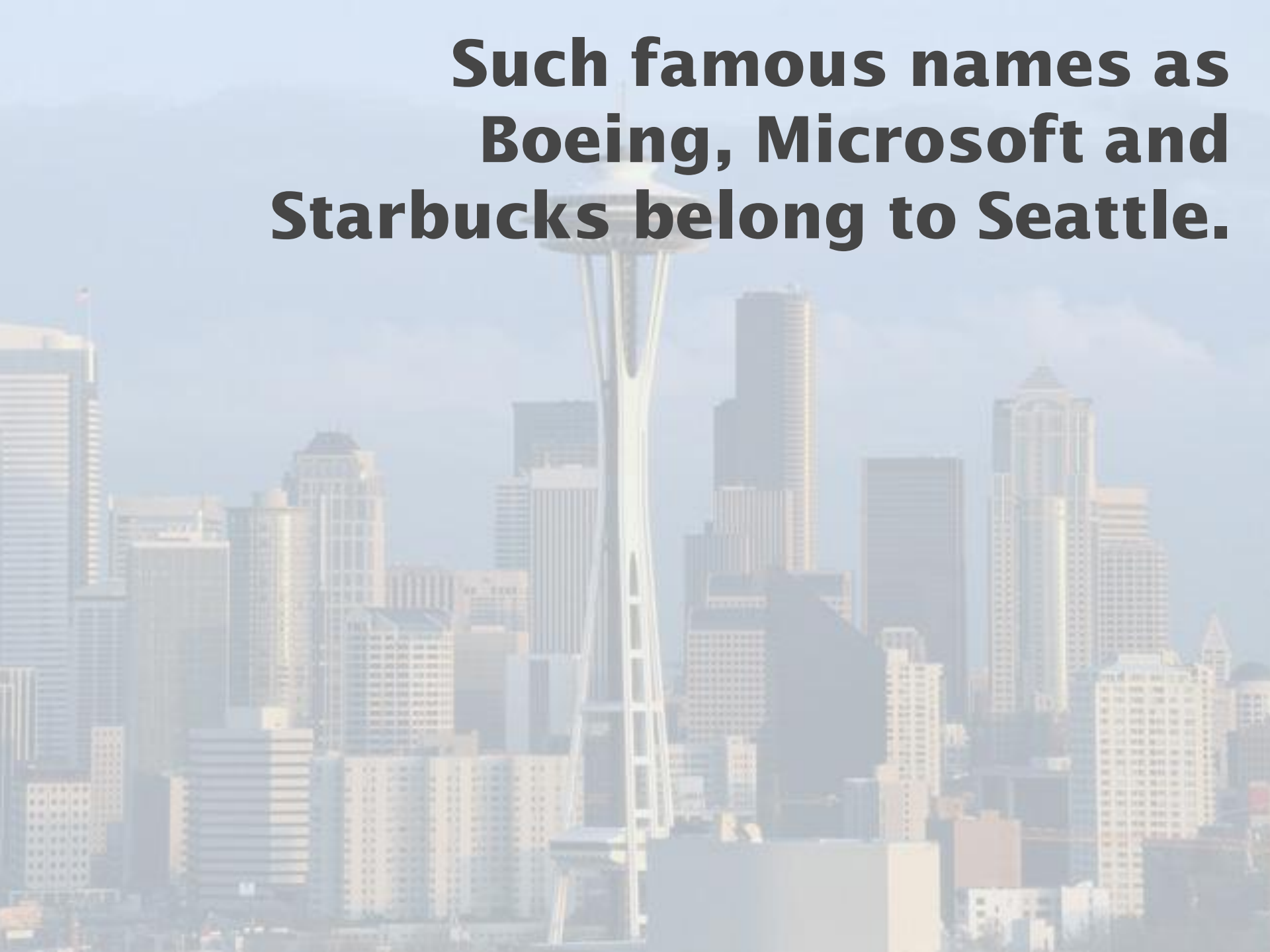
Northgate shopping mall, built in 1950, was the first shopping center in the world





Northgate shopping mall, built in 1950, was the first shopping center in the world

**Such famous names as
Boeing, Microsoft and
Starbucks belong to Seattle.**



**Such famous names as
Boeing, Microsoft and
Jacks belong to Seattle.**



**Such famous names as
Boeing, Microsoft and
Jacks belong to Seattle.**



Microsoft

**Such famous names as
Boeing, Microsoft and
Jacks belong to Seattle.**



Microsoft



**Seattle is the most literary
city in America.**



Seattle is the most literary city in America.



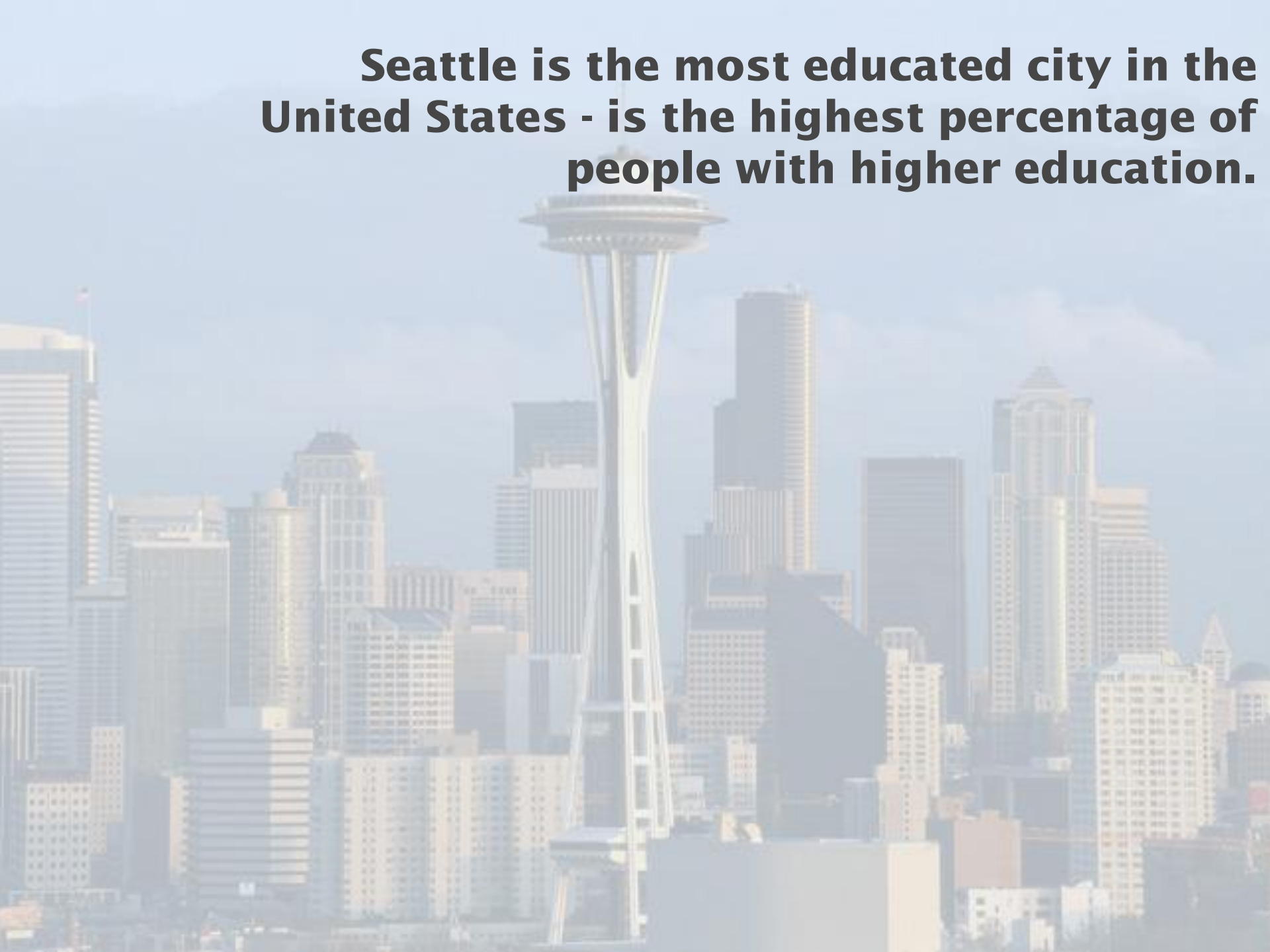
Seattle Central Library
with the Columbia Center
in the background

Seattle is the most literary city in America.



Seattle Central Library
with the Columbia Center
in the background

Seattle is the most educated city in the United States - is the highest percentage of people with higher education.



Seattle is the most educated city in the United States - is the highest percentage of higher education.



University of
Washington
Quad in Spring

**Seattle has more bookstores than
any other town in America.**



Top attractions in Seattle



The Space Needle is a tower in Seattle, Washington and a major landmark of the Pacific Northwest region of the United States and a symbol of Seattle.



The Space Needle is a tower in Seattle, Washington and a major landmark of the Pacific Northwest region of the United States and a symbol of Seattle.



Seattle Aquarium



Seattle Aquarium



Central Waterfront



Central Waterfront



CenturyLink Field





List of people from Seattle



Bill Gates
Co-founder of
Microsoft



List of people from Seattle



Paul Allen
Co-founder of
Microsoft

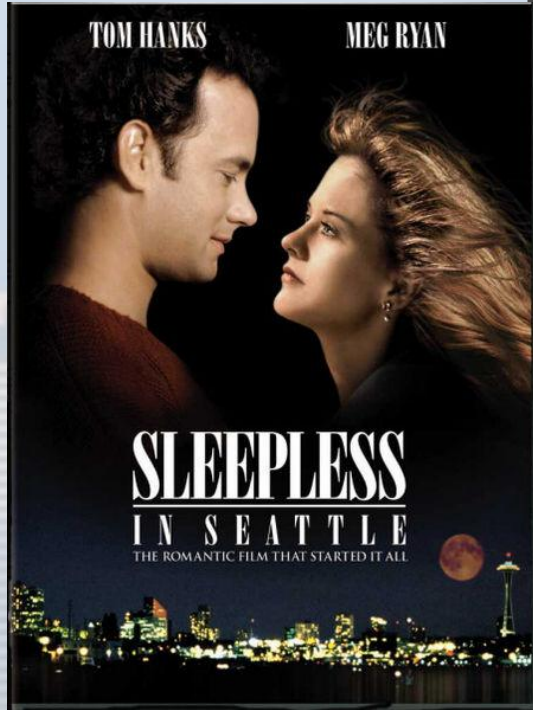


List of people from Seattle

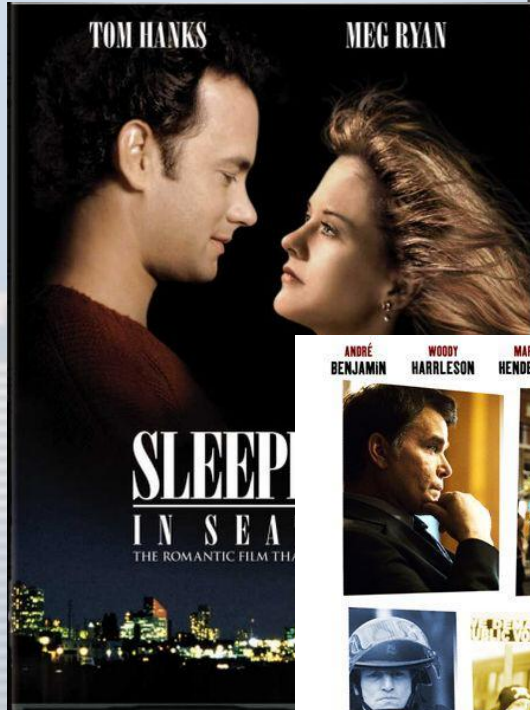


**Ray
Charles
musician**

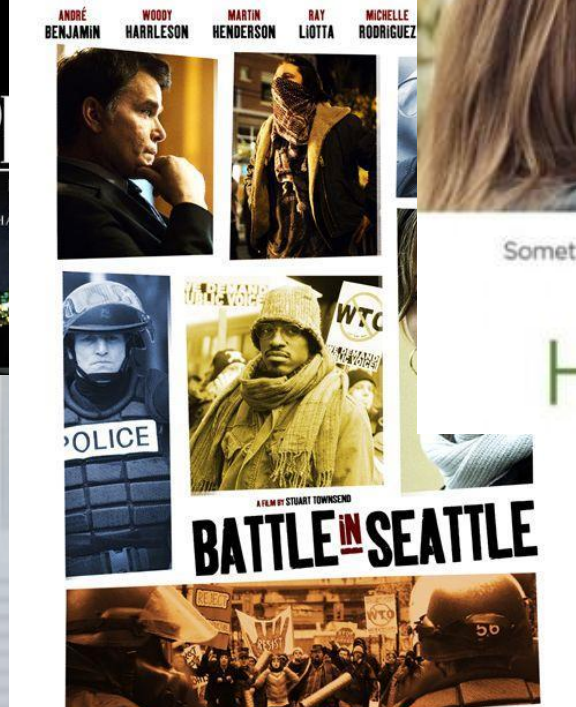
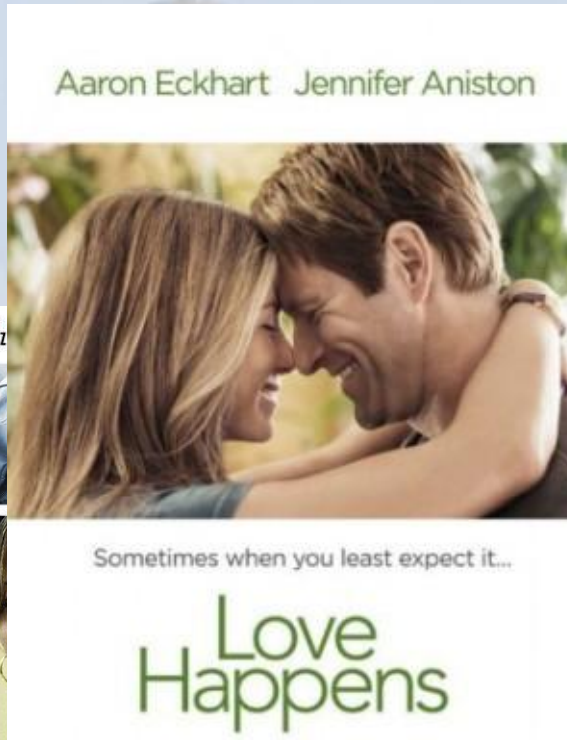
Films about Seattle



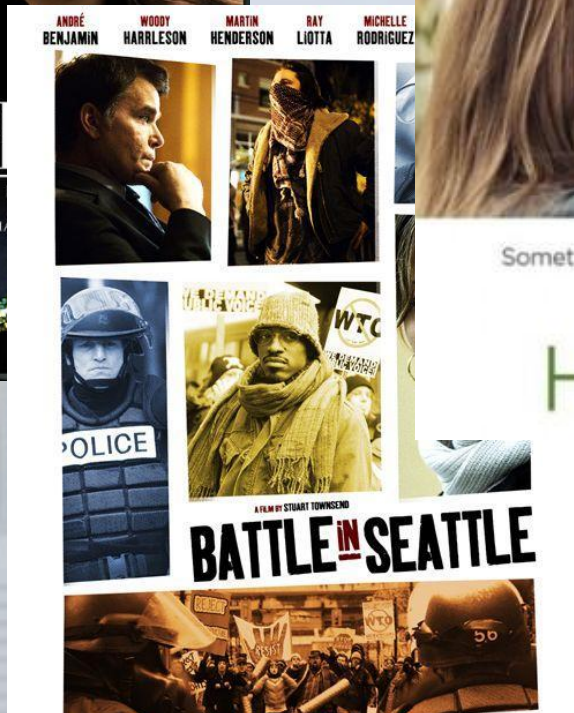
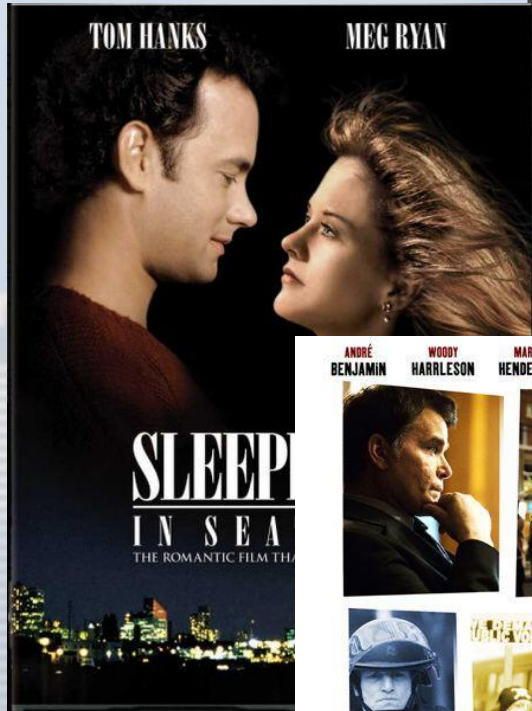
Films about Seattle



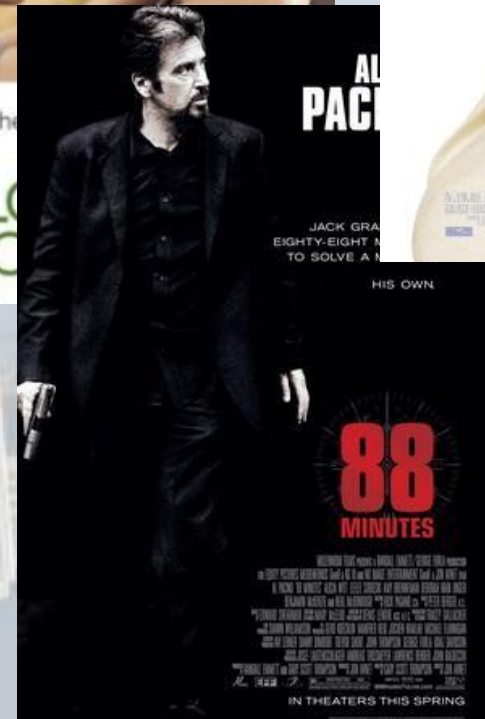
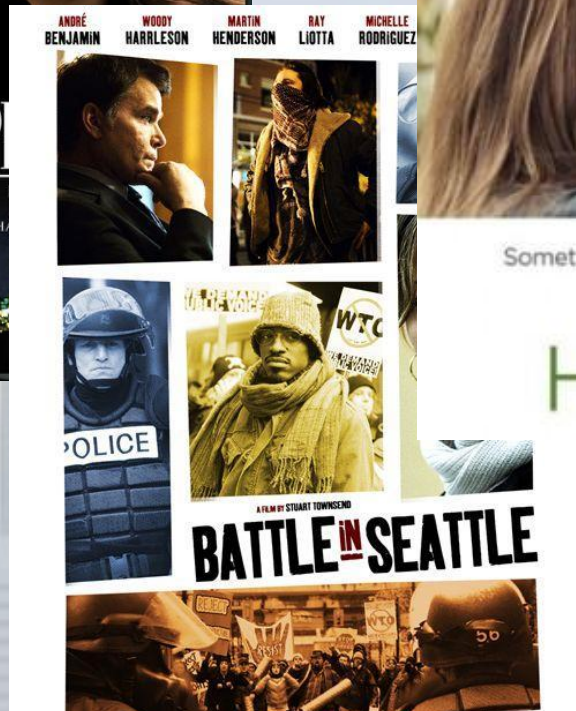
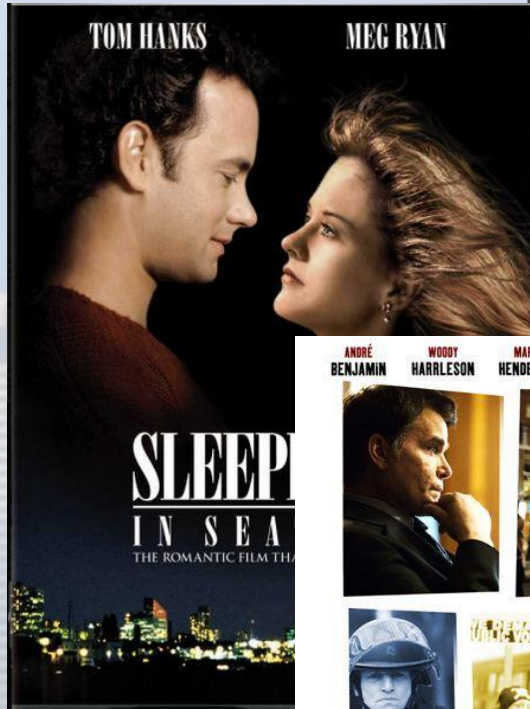
Films about Seattle



Films about Seattle



Films about Seattle



Films about Seattle

