

Royal Family Quiz

How well do you know the British royal family?

*What is the family name
of the present royal family?*

- a) Smith
- b) Tudor
- c) Stuart
- d) Windsor



When did Queen Elizabeth II become Queen?

- a) 1952
- b) 1962
- c) 1972
- d) 1982

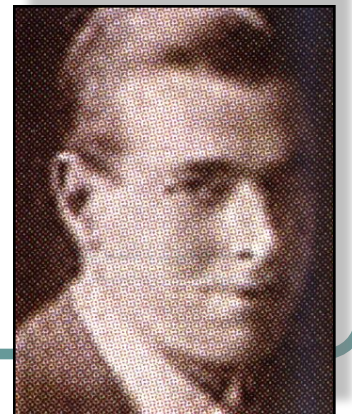


Who is her husband?

a) Prince Charles



b) Prince Philip



c) Prince Andrew

d) Prince George

How many children does

Queen Elizabeth II have?

a) 1

b) 2

c) 3

d) 4



What are the Queen's favourite animals?

a) cats



b) dogs



c) hamsters



d) snakes



When was Prince

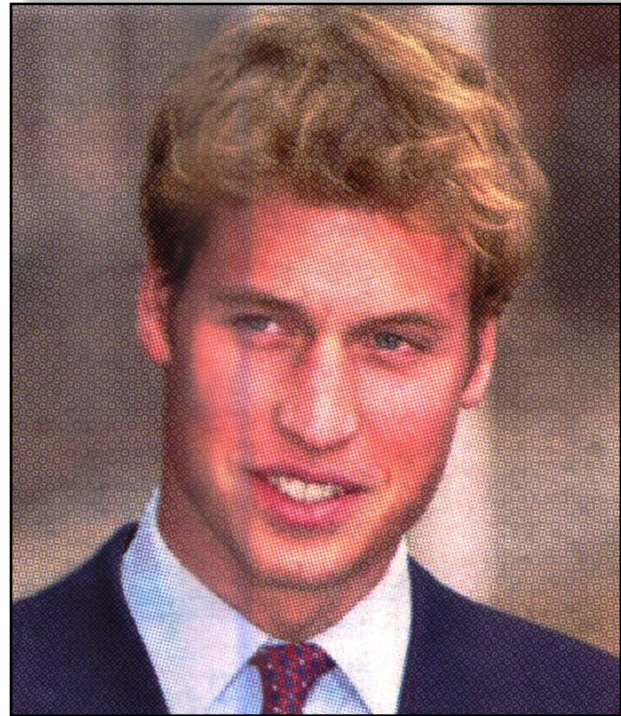
William born?

a) 1982

b) 1984

c) 1985

d) 1987



Which university did

Prince William attend?

- a) Oxford University
- b) Cambridge University
- c) St Andrews University
- d) London University

What is Prince Harry's real name?

- a) Henry Charles Albert David
- b) Henry Charles Albert
- c) Henry Charles
- d) Henry Albert



Where do Prince William and Prince Harry live?

a) Buckingham Palace



b) St James Palace



c) Clarence House



d) 10 Downing Street



Who was once part of the British horse-riding team in the Olympic

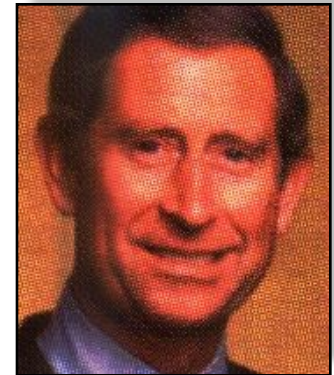
Games?

- a) Prince Philip
- b) Prince Charles
- c) Prince Andrew
- d) Princess Ann



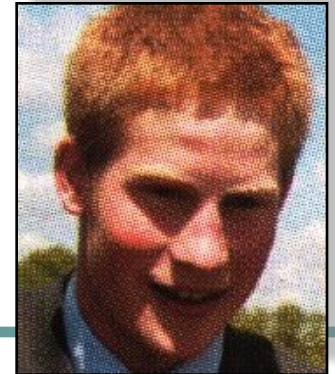
*Which member of present royal family
once wrote a successful children's
book?*

- a) Prince Philip
- b) Prince Charles
- c) Prince Andrew
- d) Princess Ann



Which member of the royal family is president of England's Football Association?

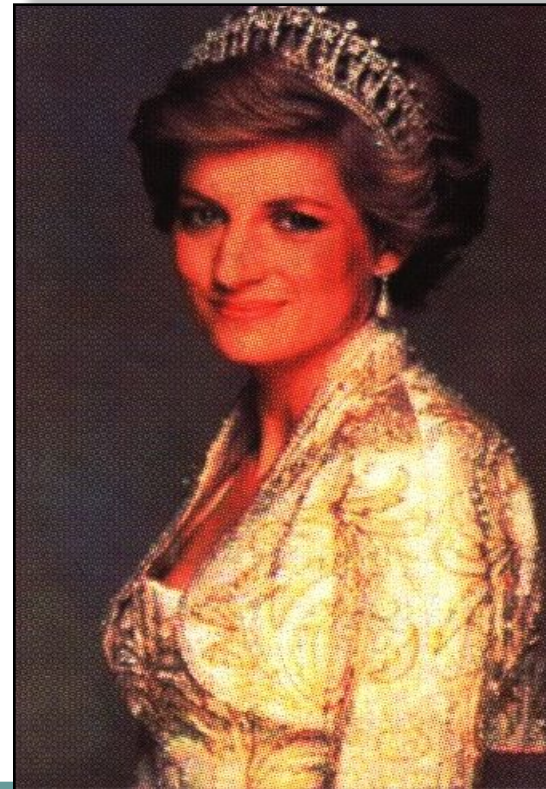
- a) Prince Charles
- b) Princess Ann
- c) Prince William
- d) Prince Harry



Which city did

Princess Diana die in?

- a) London
- b) Paris
- c) Madrid
- d) Rome



Where are the British monarchs crowned?

- a) St Paul's Cathedral
- b) Buckingham Palace
- c) Westminster Abbey
- d) Houses of Parliament



How many rooms are there in Buckingham Palace?

- a) 100
- b) 200
- c) 300
- d) 600



Which British monarch reigned for the longest period?

a) Queen Victoria



b) Elizabeth I



c) Henry VIII



d) George V



Lady Jane Grey had the shortest reign of any British monarch. How long did she reign?

- a) 9 months
- b) 9 weeks
- c) 9 days
- d) 9 hours



How many wives did Henry VIII have?

- a) 10
- b) 8
- c) 6
- d) 4

