

WILD ABOUT ANIMALS

Made by teacher

Vera Alexandrovna Kartashova

Based on **Spotlight 4**

(Module 4)

2014/15

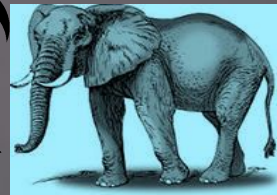
Use the questions as a plan & retell about WWF (home task)



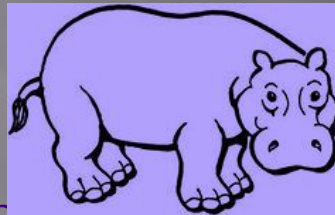
- 1 What does WWF mean?
- 2 What animals can you see in the park?
- 3 Where can you have a picnic?
- 4 Who can you meet?
- 5 What time is the park open?
- 6 How much is it for a child?

Song about animals.

‘The animals went in two by two’



NO!



g for three animals \- .mp3song for three
animals \- (1).mp3

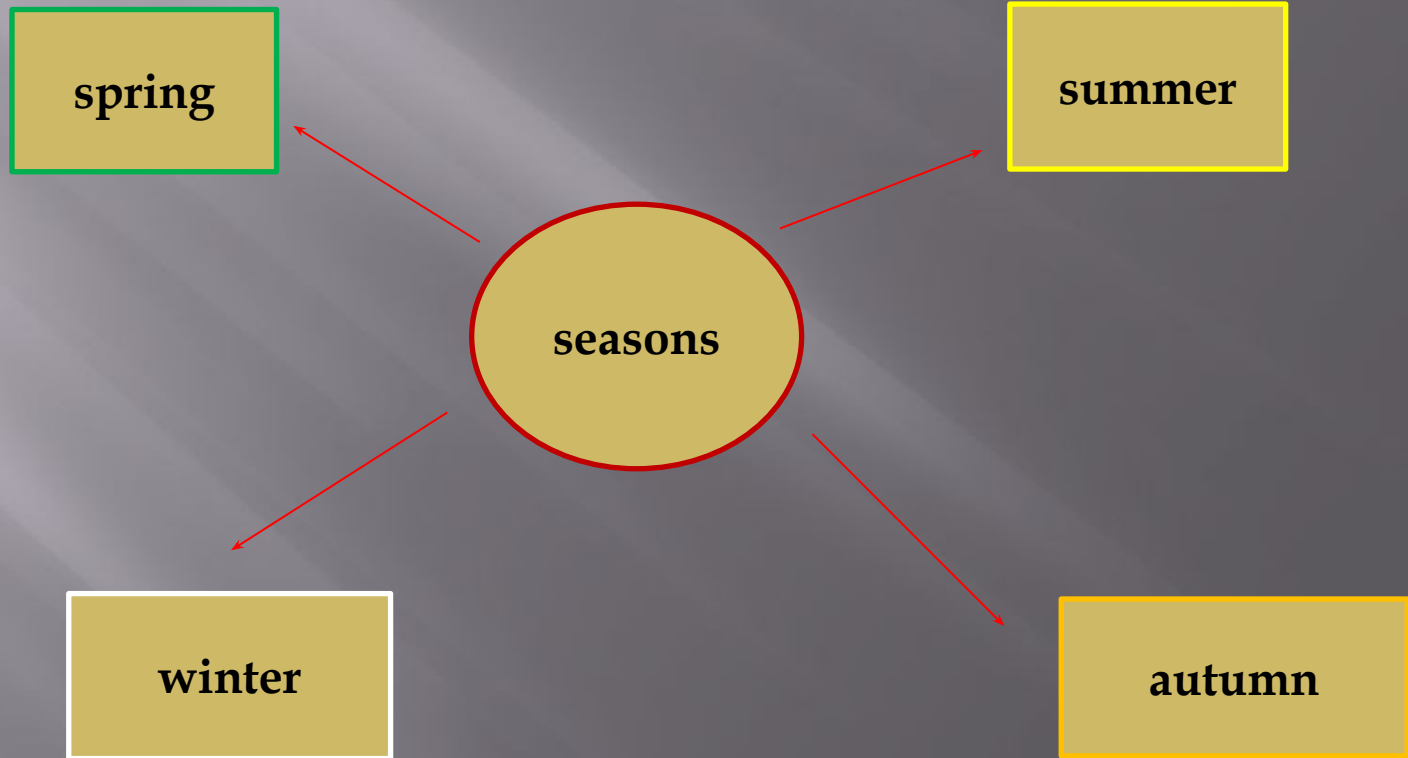


Excellent!!!

Thank you for your performance!



Let's make a mind map & remember the seasons



Months of the year

January

July

February

August

March

September

April

October

May

November

June

December

How to compare things, animals, people

1 small - smaller

2 tall - taller

3 nice - nicer

4 big - bigger

5 fat - fatter

6 funny - funnier

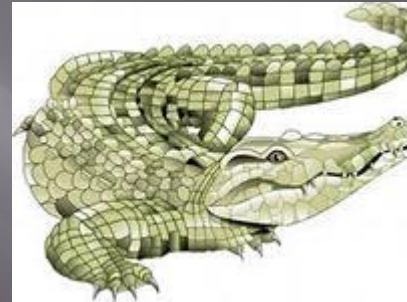
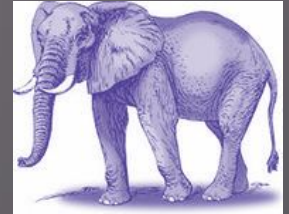
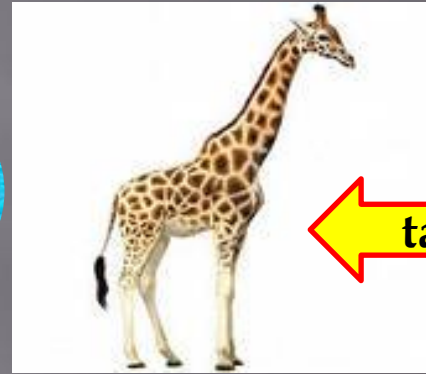
7 busy - busier

8 popular - more popular

9 beautiful - more beautiful

10 good - better

Ex 3., P. 24 Reading & speaking skills



Ex 4., P 25. Read and answer the questions

- ☐ **What are Grey Whales often called?**
- ☐ **Where are the whales from April to November?**
- ☐ **How many months do they stay in Mexico?**

Reading skills. “A whale of a time”

Grey Whales, often called ‘friendly whales’, make the same amazing journey every year.

From April to November the whales stay in the cold waters of the Arctic looking for food. Then, from December to April they go to the warmer waters of Mexico to have their babies!

The gray Whales travel more miles than any other mammal on earth. They don’t need tickets, passports or suitcases – and I’m sure they all have a whale of a time!



Ex 6., P. 35 Be a poet! Read & complete.

The _____ comes in April.

It sings its song in _____ .

In _____ it changes tune

And in July it _____ away!



Cuckoo!

cuckoo

June

May

flies

must / mustn't

- You **must** feed the dog every day.
- You **mustn't** give the dog any sweets.

Ex. 1., p. 26 Reading & speaking skills

ZOO RULES

**Do not feed
the animals!**

**Do not ride
bikes!**

**Do not play
loud music!**

**Leave your
pets at home!**

**Put your
rubbish in the
bin!**

Do not run!

Ex. 2., P. 26 Grammar & vocabulary. School rules.

1 You **can't** **don't have to** run during the breaks.

2 I **can** **have to wear** a uniform at school.

3 In the library you **may** **must be** be quiet.

4 Mr Green, **may** **must** I ask you a question?

5 You **mustn't** **don't have** to go to school on Sunday.

6 **May** **Have** I come in, please?

Ex. 3., P 26

Sing & do!

The yellow giraffe



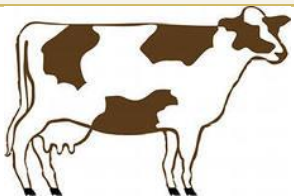
**The yellow giraffe
Is as tall as can be.
It can eat leaves
From a very tall tree!
It's got a long neck
And long legs too.
And it can run faster
Than me or you!**

- 1 A herbivore eats only plants
- 2 A carnivore eats meat from animals
- 3 An omnivore eats meat & plants - usually fruits & vegetables

Herbivore

Carnivore

Omnivore



Well done!

Great job!!!



Home task

□ SB Ex p.

□ WB Ex p

**Thank you to your work,
dear students!**

Dear guest!

**Thank you for coming and
attending our lesson!**

Good luck to all!