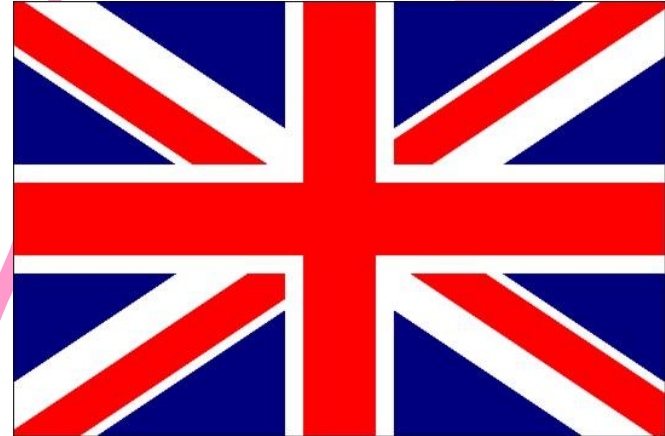


**We see, hear,
speak, do and
all will be OK!**



**What is the
weather like in
Britain?**



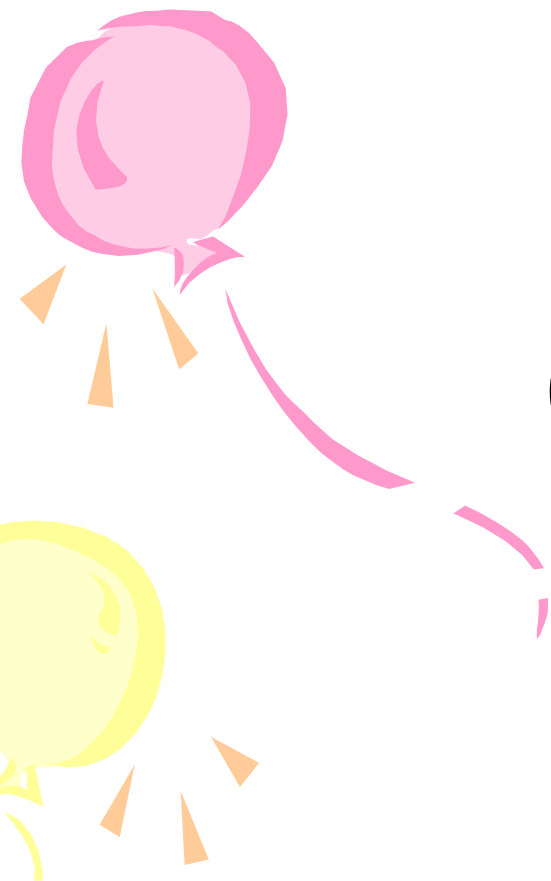


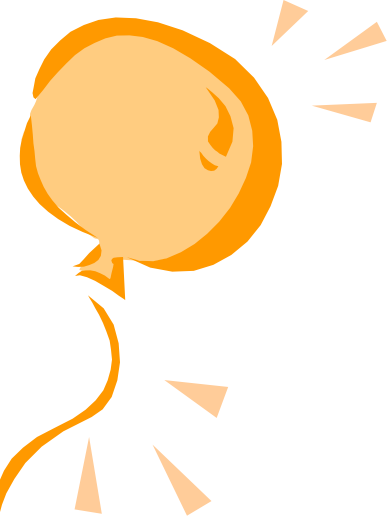
[k]

cold

cloudy

cool

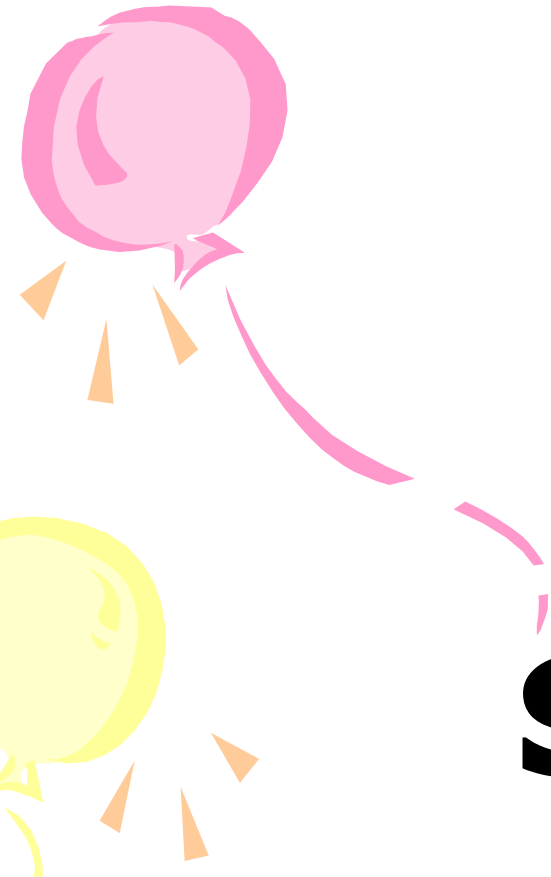




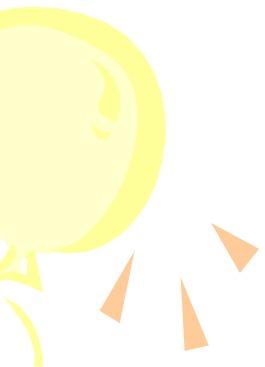
[t]

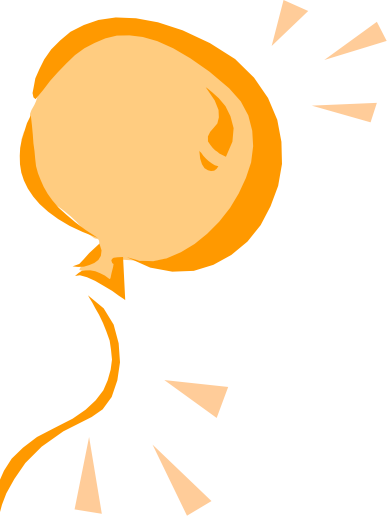
frosty

hot



stormy

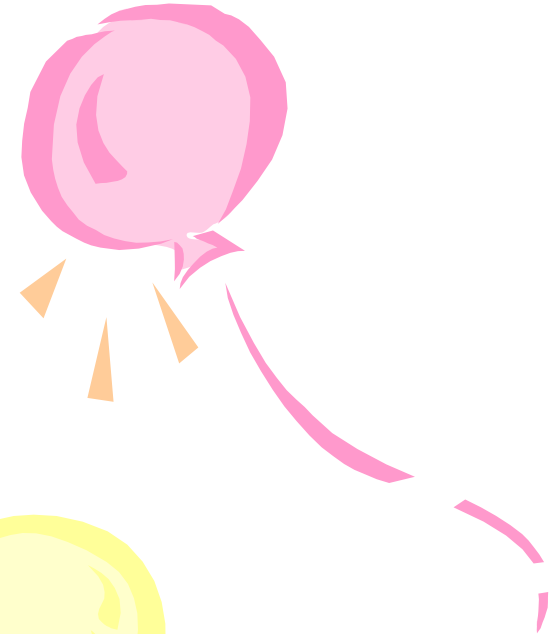


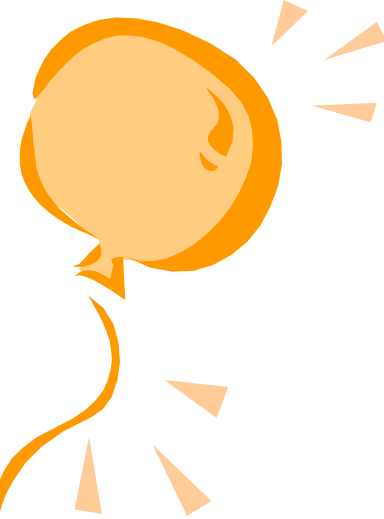


[f]

frosty

foggy

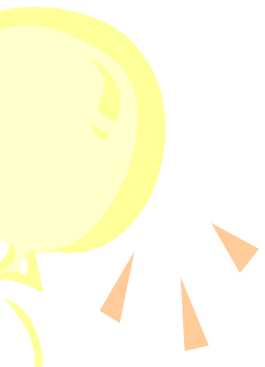
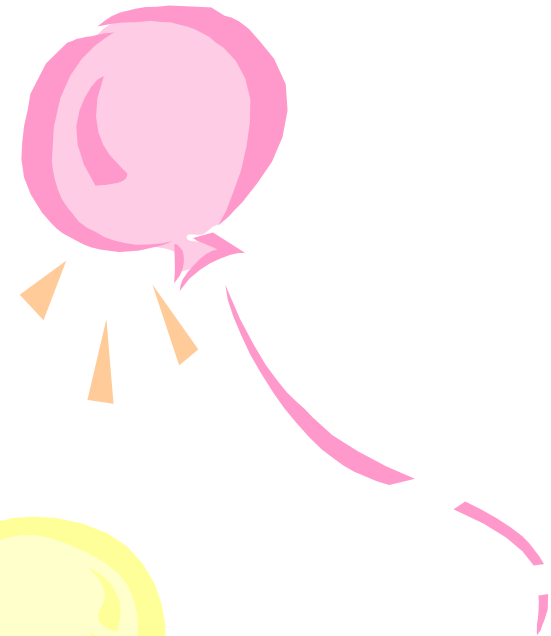


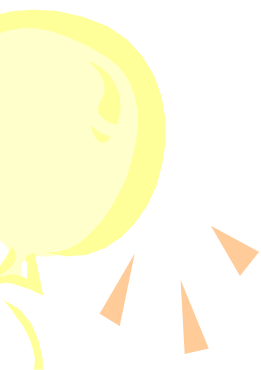
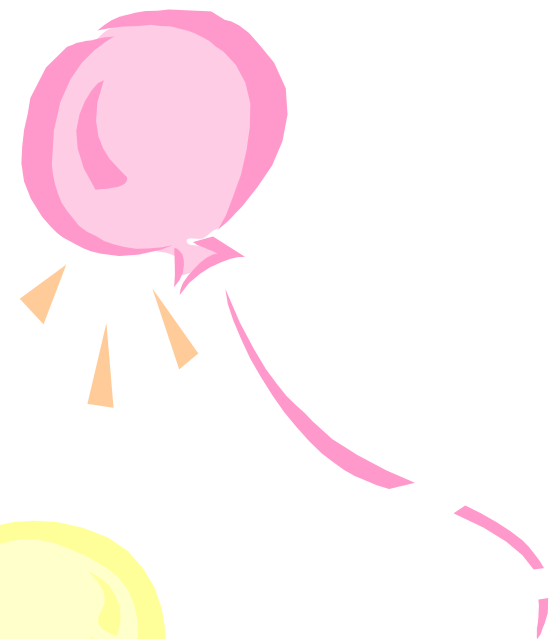


[w]

warm

windy





[p]

frosty

foggy

hot

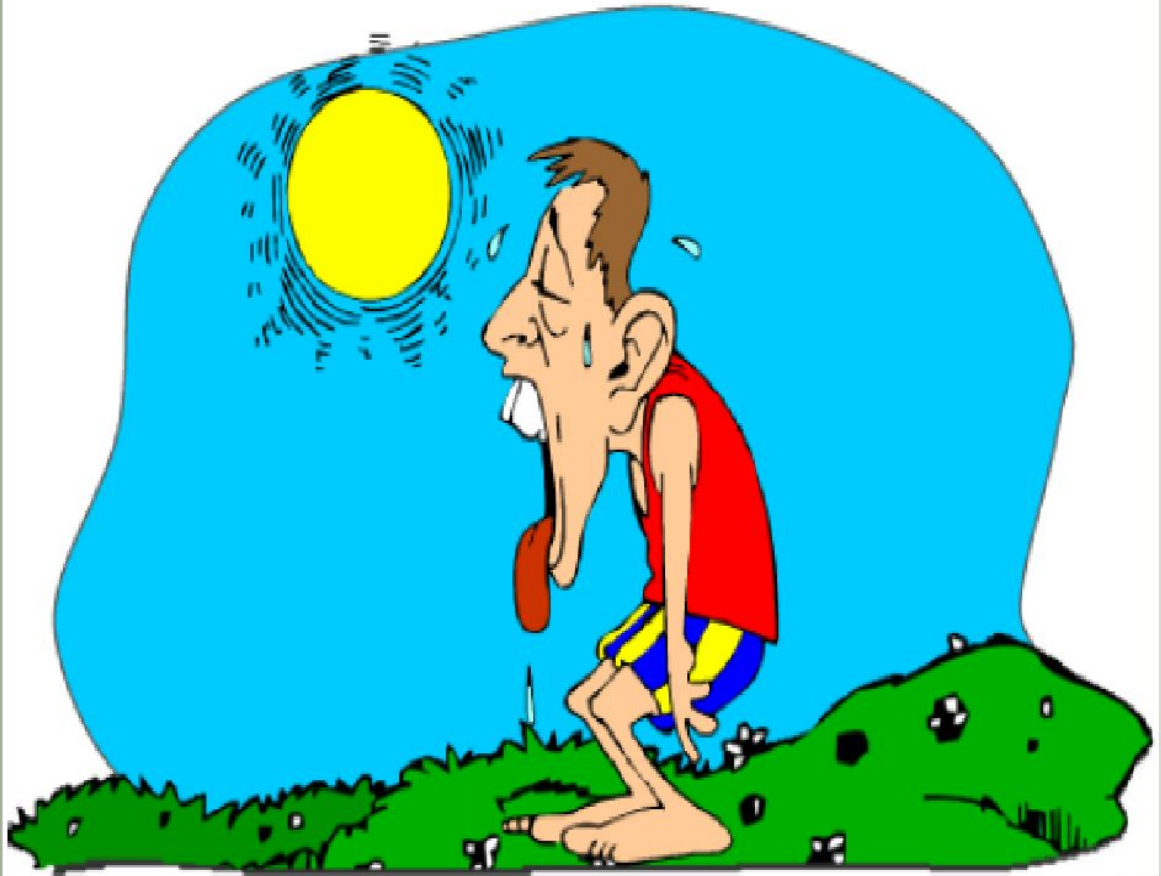
Hot

**It's
hot.**

MES-English.com

Flash Cards

weather



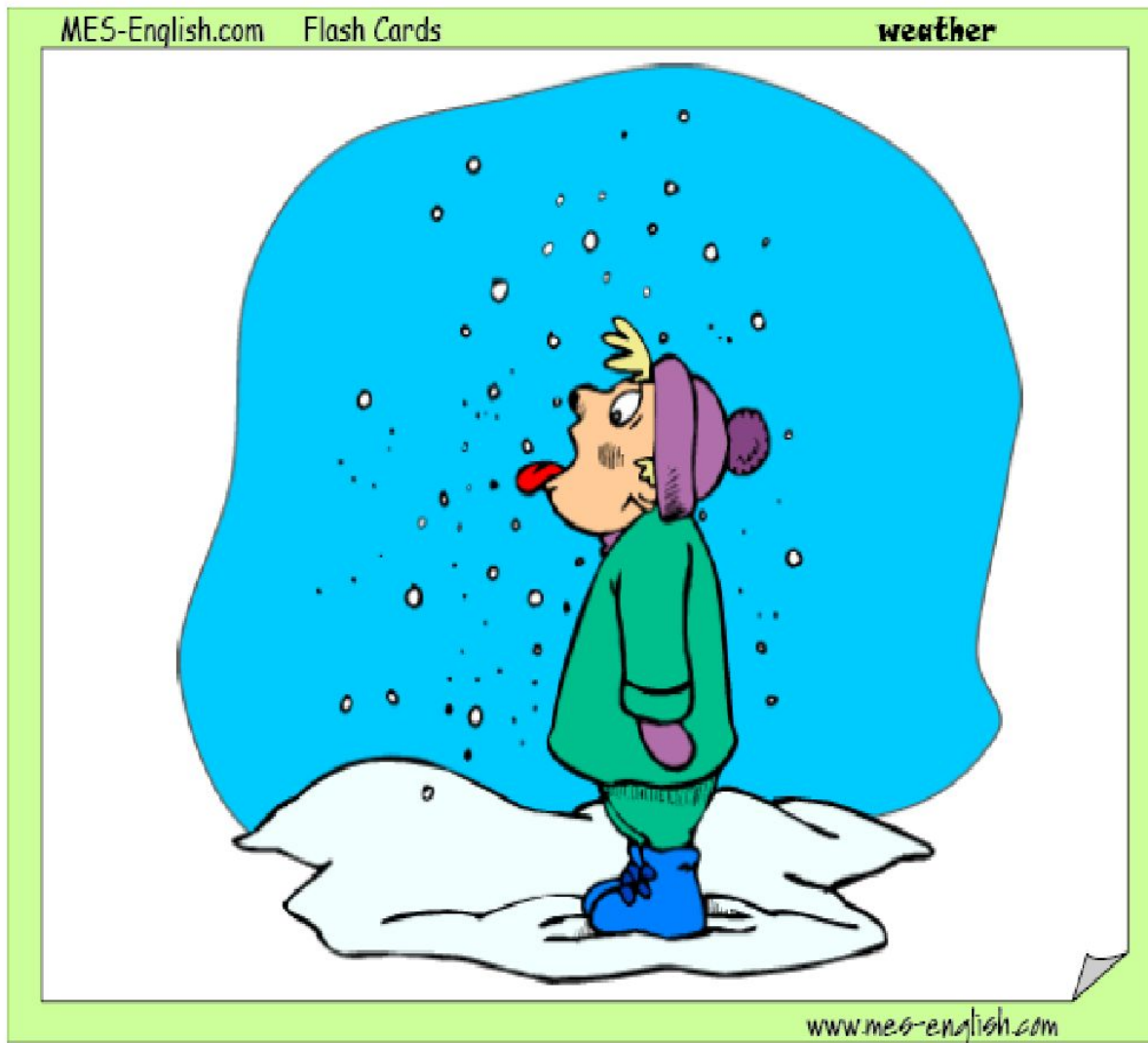
www.mes-english.com

Cold

It's cold.

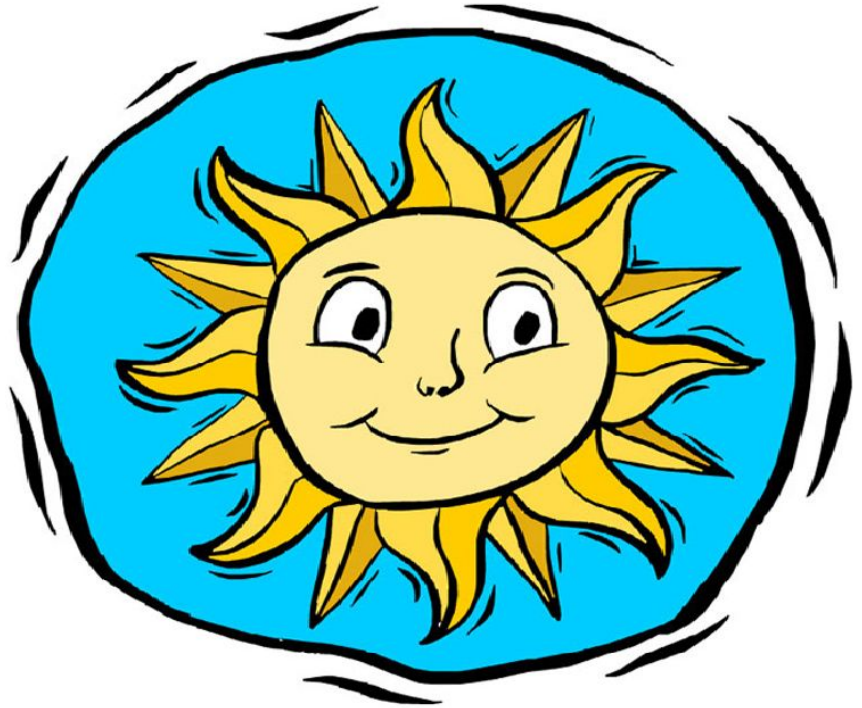


Snowy
It's
snowy.



Sunny

**It's
sunny.**



Windy

**It's
windy.**

MES-English.com Flash Cards

weather



www.mes-english.com



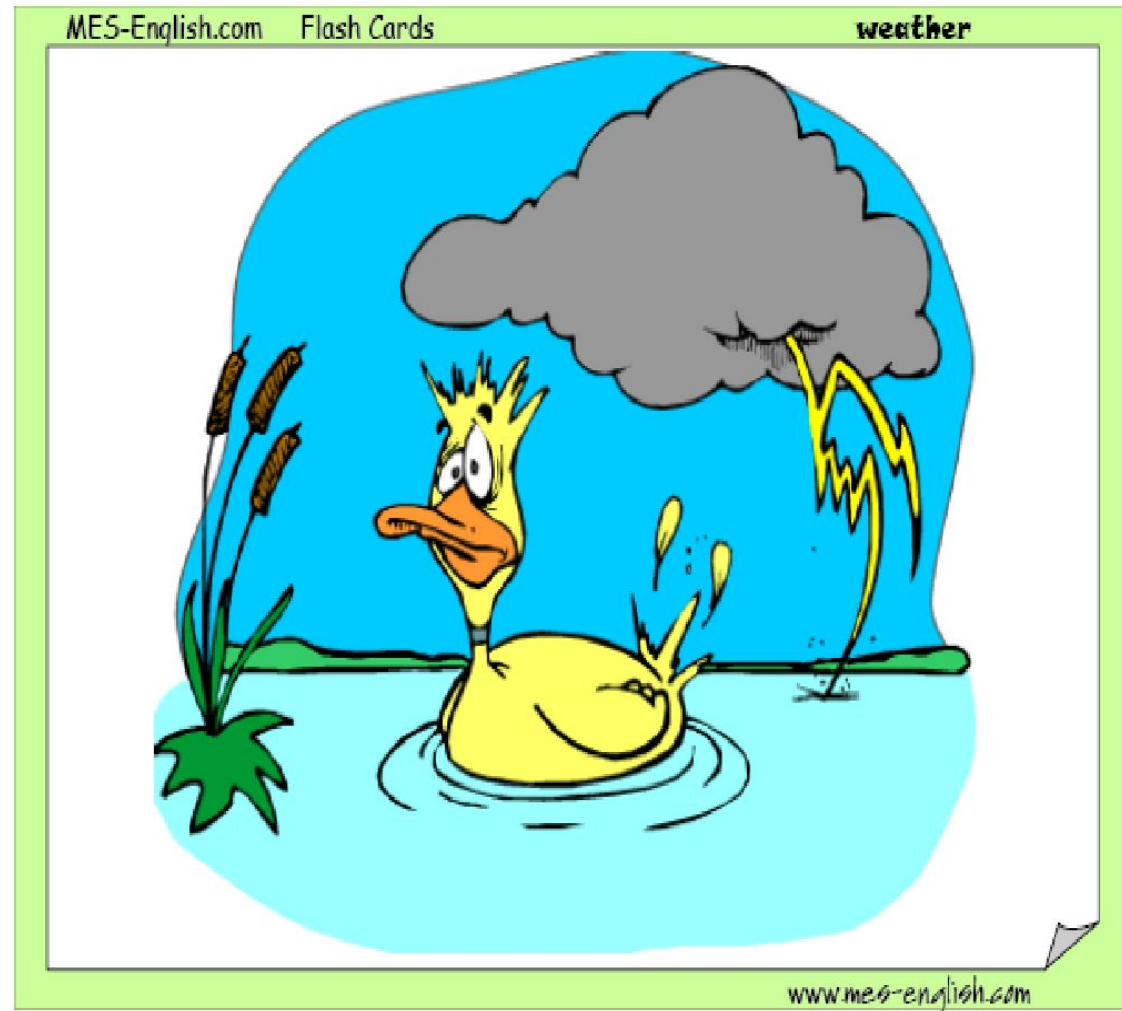
Rainy

It's rainy.



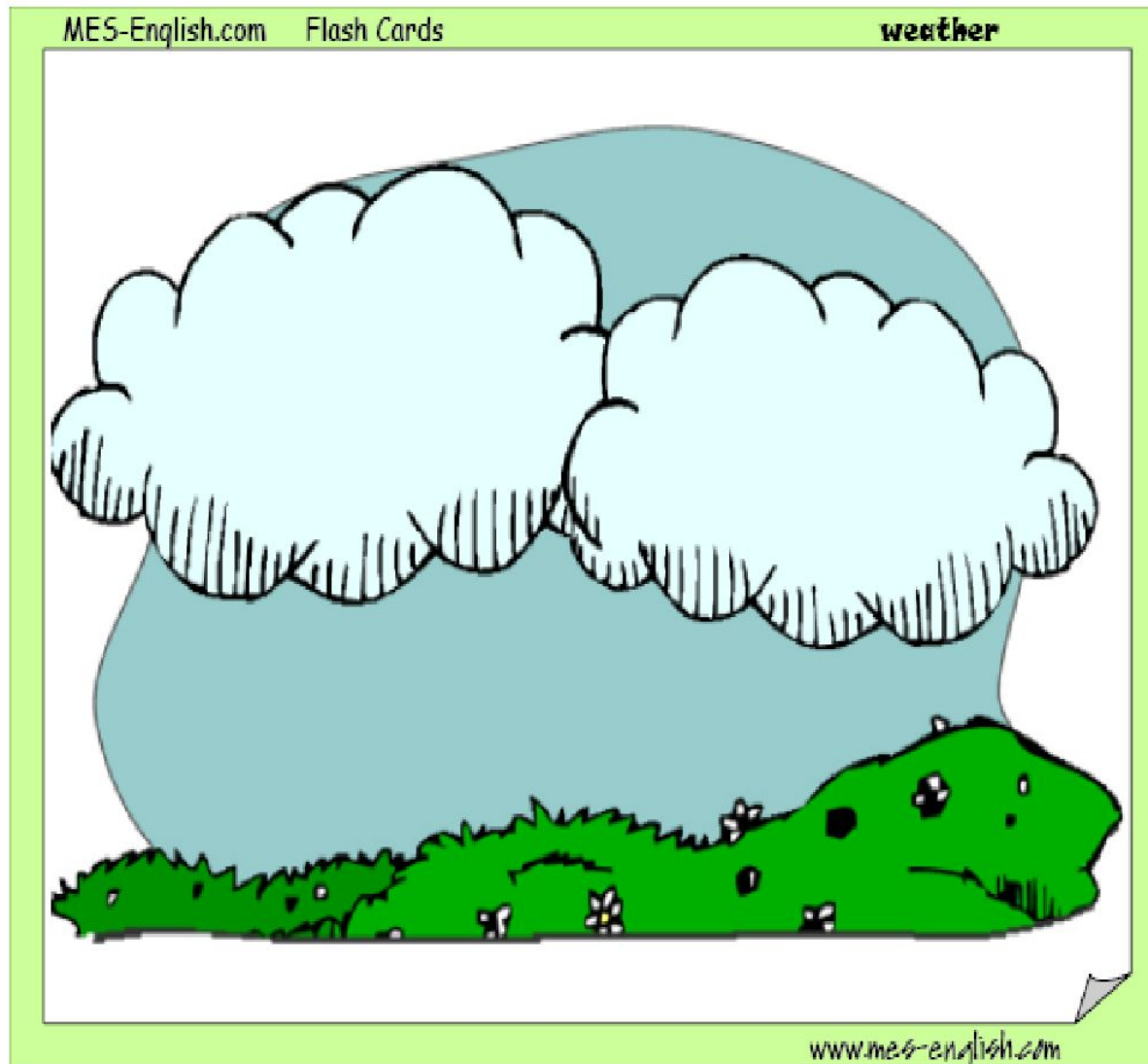
Stormy

It's stormy.



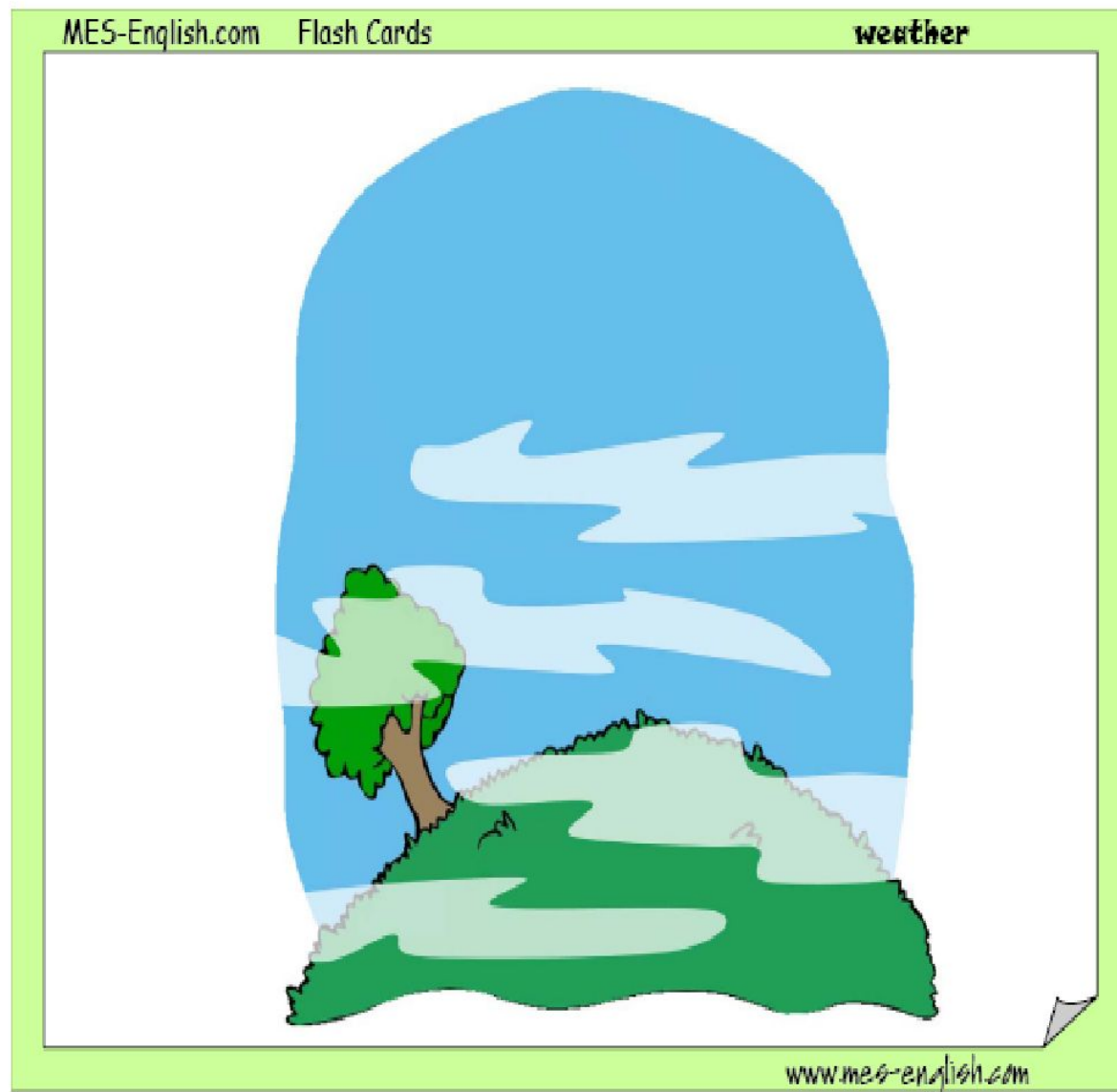
Cloudy

**It's
cloudy.**



Foggy

**It's
foggy.**

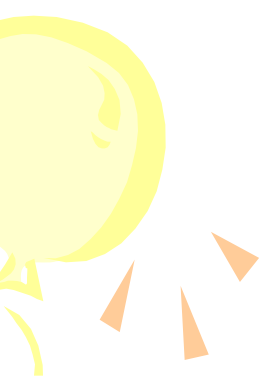




**I like summer because
it is sunny.**





**I like... because
it is...**





Read the text and answer
the question

- 1: What is the weather like in winter?
 - 2: What is the weather like in spring?
 - 3: What is the weather like in summer?
 - 4: What is the weather like in autumn?
- 
- 




What is the weather like in
your region?

- In winter it's...
 - In spring it's...
 - In summer it's...
 - In autumn it's...
- 
- 



What is the winter
like in Scotland?



What is the winter
like in England?



Match the weather symbols to the words



Match the weather symbols to the words:

hot

sunny

windy

stormy

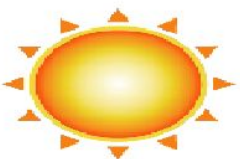
cold

rainy

cloudy

warm

snowy



1



2



3



4



5



6



7



8

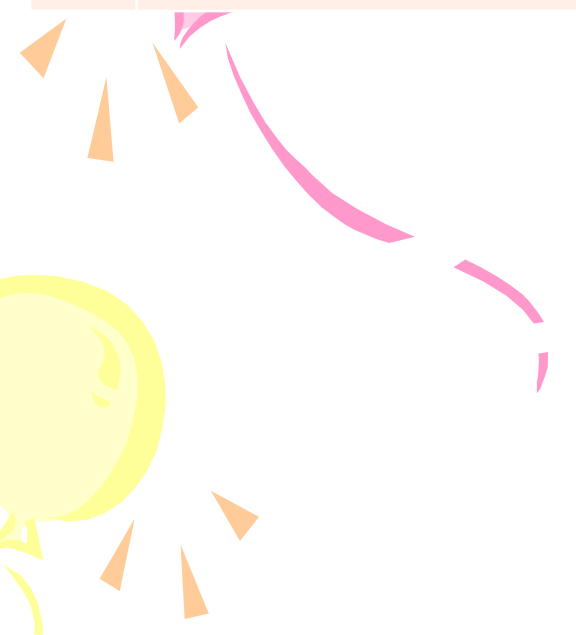


9



Check each other

1	Sunny	4	Hot	7	Windy
2	Rainy	5	Cold	8	Snowy
3	Cloudy	6	Warm	9	Stormy





Home task



- **AB ex. 2, p.63**

Choose the drawing that reflects your
spirits

