



Welcome to one  
of the greatest states  
of America!!!

Welcome to the state of Missouri!!!



Missuori



Missuori

Missouri

Missuori

Missuori

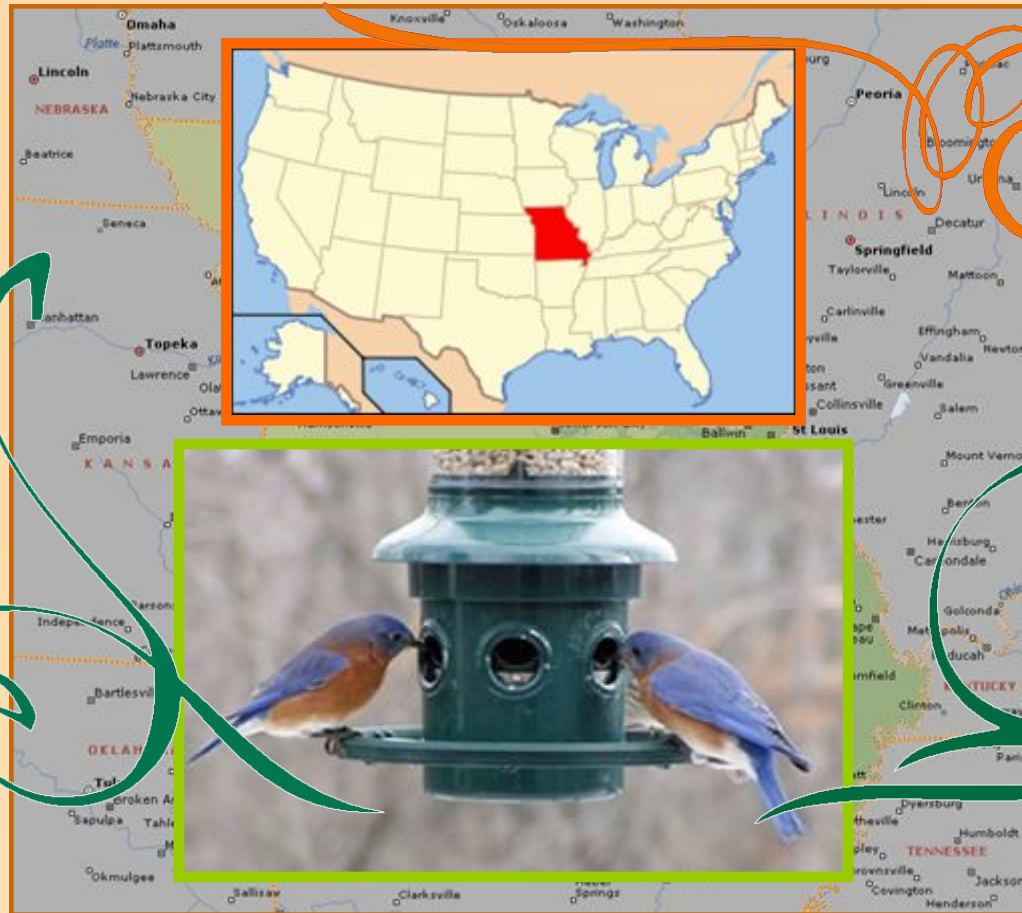
Missuori



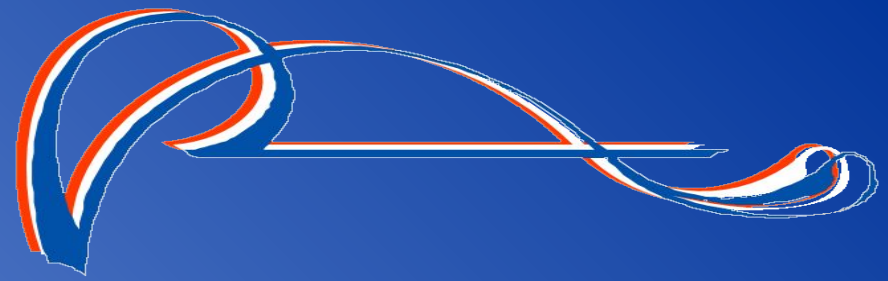
Missuori



*Missouri became the 24th State of the Union  
on August 10, 1821.*







*The Flag  
of the state  
of Missouri*



*The Great Seal  
of the state  
of Missouri*



The nickname of the state of Missouri :

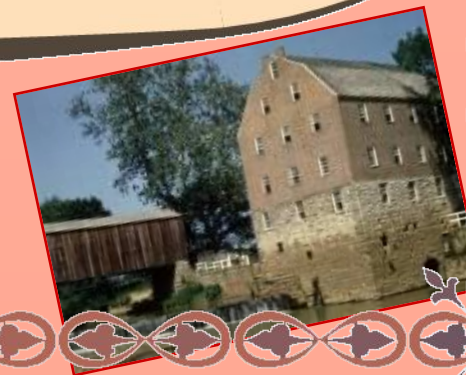
"Show Me The State"





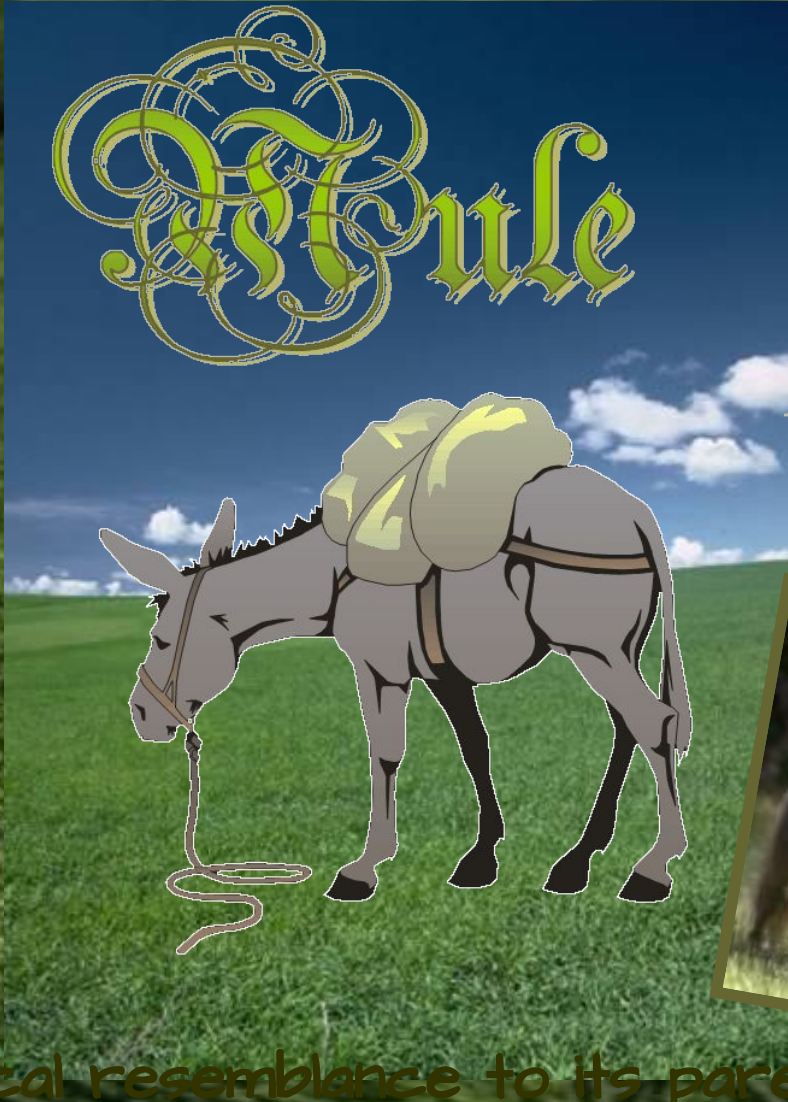
The State motto is:

*"The Welfare of the People  
Shall Be the Supreme Law"*



# The State Animal

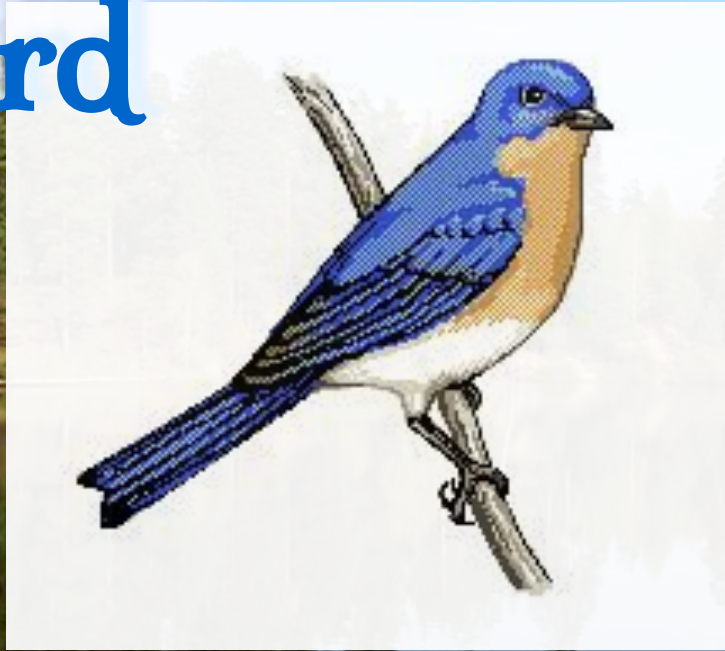
# Mule



its physical resemblance to its parents is obvious.  
The important mixture, however, is its (donkey) father's  
stamina  
and its (horse) mother's temperament and brute strength.  
Mules are used worldwide in agriculture and as beasts of



# Missouri's bird is the bluebird



The bluebird is related to the American and European robins.  
This species feeds on grasshoppers, caterpillars, and beetles and a variety of flying insects, fruit, and berries.





The hawthorn is the  
state flower of  
Missouri



# Missouri's tree is the dogwood



Most species of dogwood are trees with simple leaves,  
but a few species, such as the flowering dogwood, are popular for their ornamental value. Many songbirds and small mammals eat the fruit of the dogwood.

Flowering Dogwood







The insect of the state of  
Missouri is the Honey Bee



# *The Capital of the State of Missouri is Jefferson City*



**Jefferson Thumb**



**Jefferson City Capitol**

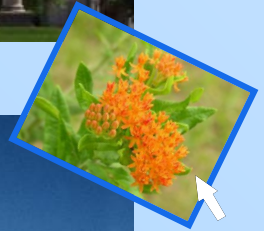


# The Northeast Region Old Courthouse and Arch





# *The Capital of the State of Missouri is Jefferson City*







**Dominating the skyline in all directions, Missouri's state Capitol is a monument to her citizens.**

**The building rests upon a limestone bluff on the south bank of the Missouri River.**

**It is 437 feet long and 300 feet wide at its center.**

**The top of the dome towers 262 feet above the basement floor.**

**The building, which covers three acres, is literally a museum of public art, remarkable as a faithful reflection of the themes, events and people of Missouri.**



This  
tourist  
attraction  
is famous  
for it's  
beauty.



One of the tourist  
attractions is  
Missouri's gate.





*Scout Sculpture,  
Kansas City,  
Missouri*





# *Harry S. Truman*

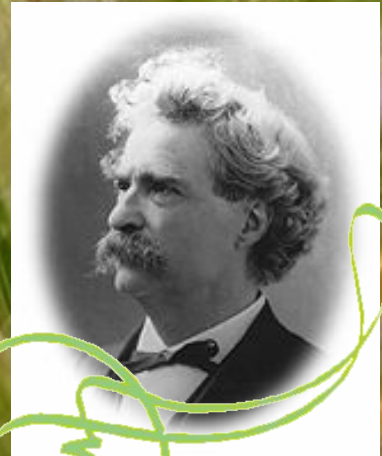


**Harry S. Truman, the 33rd US President, came into office on the death of Franklin Roosevelt on April 12, 1945.**

**Within the first weeks of his presidency, the Allies had won the war in Europe. Truman then made one of the most difficult decisions that ever faced a US President, to use the new atomic bomb against Japan to end World War II.**

# *Mark Twain*

**The great U.S. author Mark Twain wrote stories of youthful adventures that are treasured by readers around the world. He created such memorable characters as Tom Sawyer and Huck Finn.**







**Central Region**  
**Restful Waters (Spring Trail  
at Ha Ha Tonka State Park)**

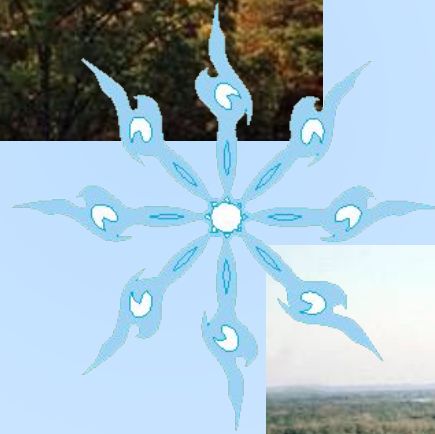


**Southwest Region**  
**Bennett Spring State Park  
near Lebanon**



## Mississippi River in Missouri

Most of the waters in Missouri flow into the Mississippi River. The Missouri crosses the state from west to east, where it flows into the Mississippi. The huge Mississippi River defines most of the state's eastern border.



## Mark Twain National Forest

Mark Twain National Forest, *above*, is the only national forest in the state of Missouri.

It is situated in the southern part of the state in a region known as the Ozark Plateau, a large area characterized by forested hills, low mountains, and deep gorges.





# *Pony Express*

In April 1860, the Pony Express began delivery of mail from St. Joseph, Missouri, to Sacramento, California. The mail was then taken by boat to San Francisco. Relays of young, lightweight, riders covered the 3,164-km (1,966-mi) journey in about 10 days. These riders faced hazardous weather conditions and hostile Native Americans. The Pony Express closed in October 1861, when transcontinental telegraph lines were completed.







# THE HAMBURGER



**The hamburger has no connection to ham.  
It got its name from the German town  
of Hamburg, which was famous  
for its ground steak.**

**German immigrants to the United States  
introduced the "hamburger steak."**

**At the St. Louis World's Fair in 1904,  
hamburger steaks were served on buns  
for the first time.**

**Hamburgers on buns were convenient  
and tasted good.**

**This became the usual way  
of eating hamburgers.**





# PEANUT BUTTER

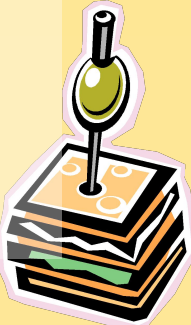


The peanut comes from South America, but peanut butter is a food that is truly “American”.

Peanut butter started in 1890 in St. Louis, Missouri.

A doctor made some peanut butter. He gave it to patients who could not eat regular food.

Later, peanut butter was popular as a health food.



# THE SKUNK

The skunk is known mainly for its bad smell. Skunks are black and white and very furry. They are small — no larger than house cats.

When a skunk is in danger, it attacks by spraying a liquid from under its tail. This liquid has a terrible smell, which may last for many days.

A skunk can spray something from as far away as twelve feet.







# THE RACCOON

**The raccoon is famous for its ringed tail and for the black "mask" around its eyes. Raccoons can use their paws skillfully, and are quite intelligent.**

**They eat many different things— frogs, fish, birds' eggs, fruit, and mice.**

**Raccoons are not timid or afraid of people.**

**They'll often take food from garbage cans.**

**This explains, some people say, the black masks around their eyes—raccoons are garbage-can robbers!**