

LOUVRE



HISTORY

The museum opened on 10 August 1793 with an exhibition of 537 paintings. The size of the collection increased under Napoleon when the museum was renamed the Musée Napoléon. The collection was further increased during the reigns of Louis XVIII and Charles X, and during the Second French Empire the museum gained 20,000 pieces.



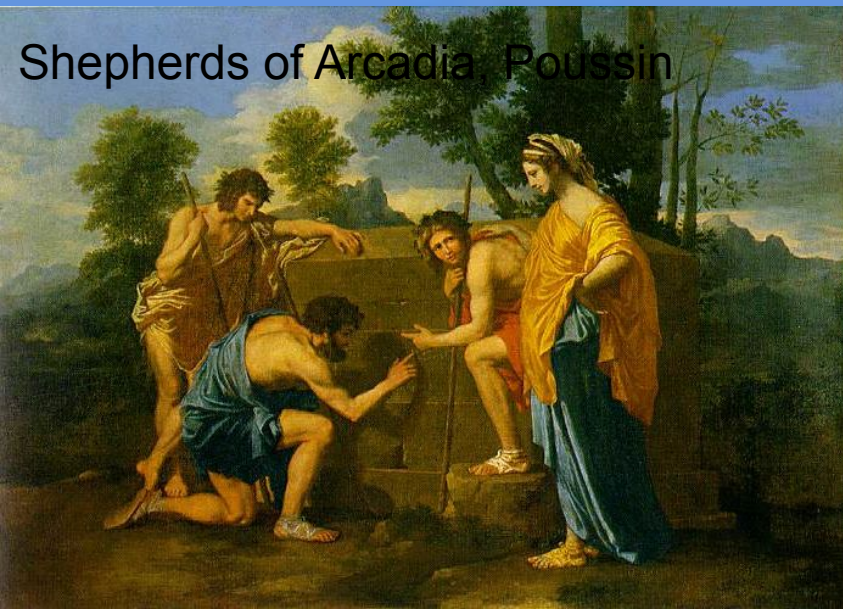
As of 2008, the collection is divided among eight curatorial departments: Egyptian Antiquities; Near Eastern Antiquities; Greek, Etruscan, and Roman Antiquities; Islamic Art; Sculpture; Decorative Arts; Paintings; Prints and Drawings.



PAINTING

The painting collection has more than 6,000 works. Nearly two-thirds are by French artists, and more than 1,200 are Northern European. French and Northern European works are in the Richelieu wing and Cour Carrée; Spanish and Italian paintings are on the first floor of the Denon wing.

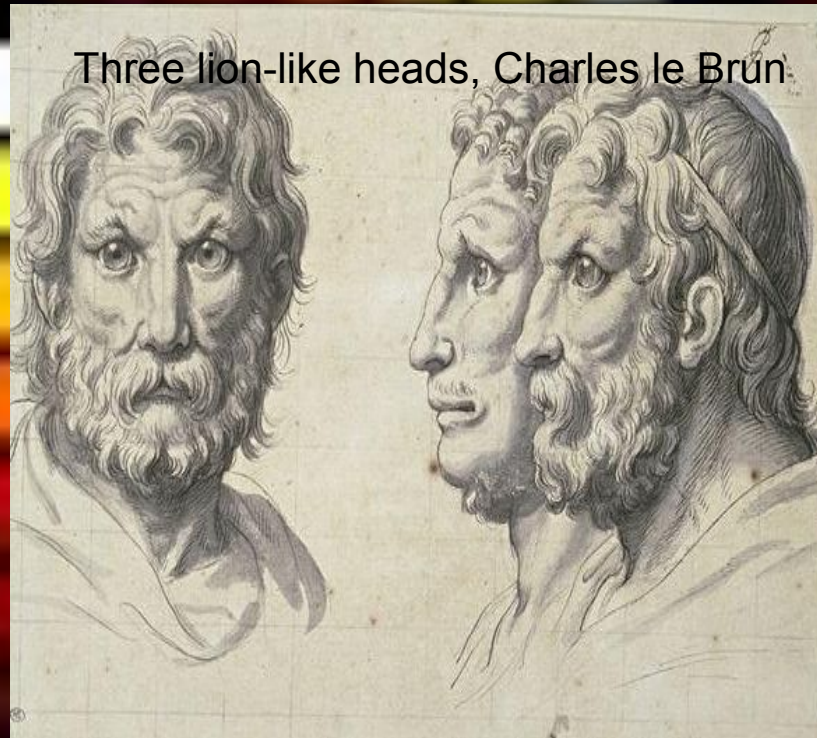
The Mona Lisa, Leonardo da Vinci



The Italian holdings are notable, particularly the Renaissance collection. The works include Andrea Mantegna and Giovanni Bellini. The High Renaissance collection includes Leonardo da Vinci's Mona Lisa, Virgin and Child with St. Anne, St. John the Baptist, and Madonna of the Rocks.

Prints and drawings

The prints and drawings department encompasses works on paper. The origins of the collection were the 8,600 works in the Royal Collection, which were increased by Fillipo Baldinucci's collection in 1806. The department opened on 5 August 1797, with 415 pieces displayed in the Galerie d'Apollon.



The collection is organized into three sections: the core Cabinet du Roi, 14,000 royal copper printing-plates, and the donations of Edmond de Rothschild, which include 40,000 prints, 3,000 drawings, and 5,000 illustrated books.

St Francis receiving the
stigmata, Giotto



GALLERY

The Annunciation, Rogier van
der Weyden



The Pieta of Villeneuve les Avignon, Enguerrand Quarton



Charles I, van Dyck



The Crucifixion, Paolo Veronese

