

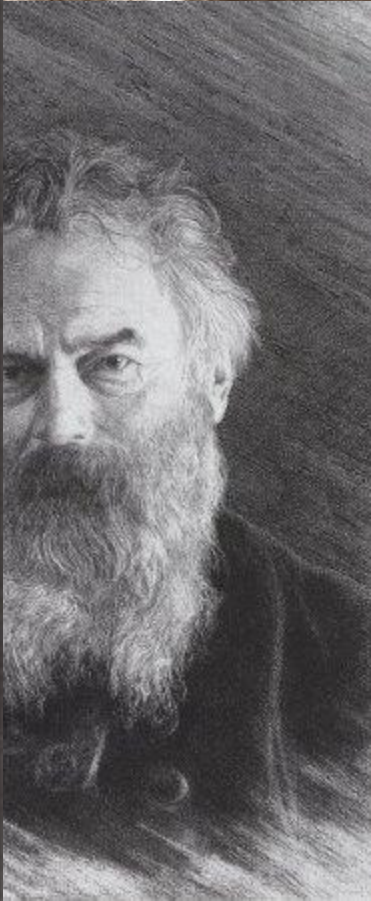
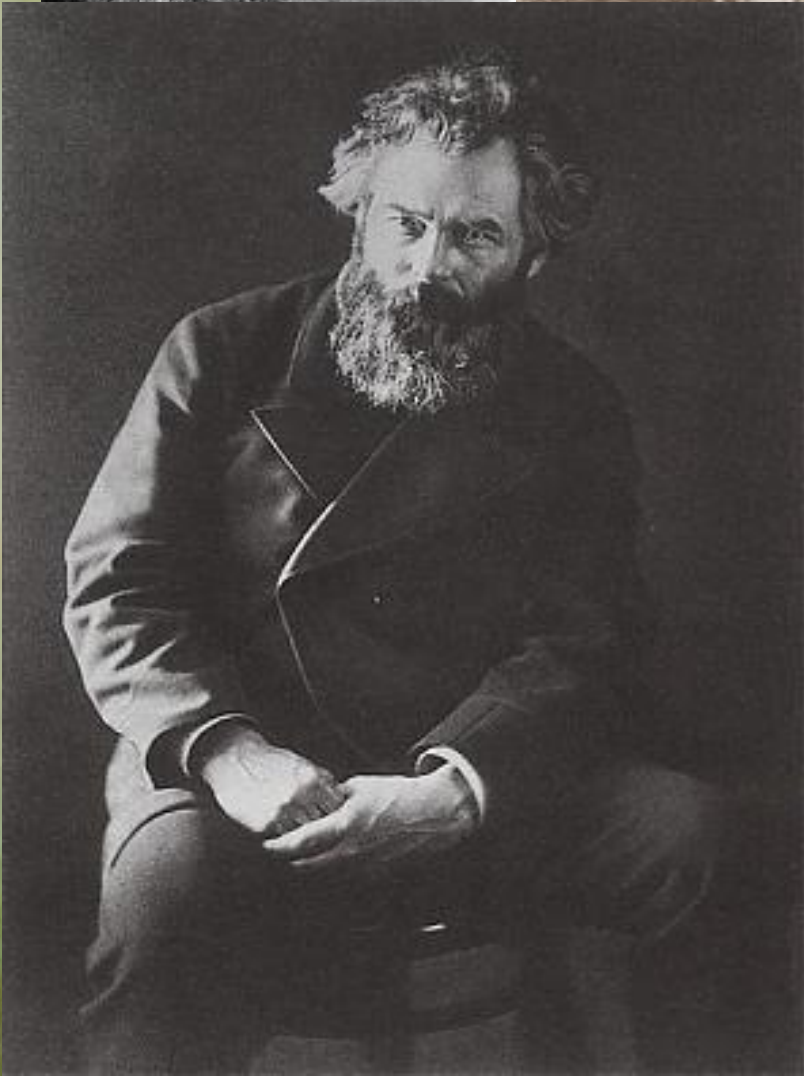
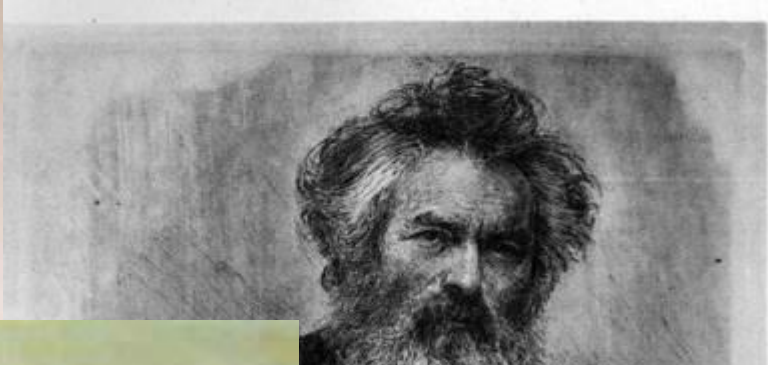
Ivan Ivanovich Shishkin

(1832—1898)

my favourite artist

MY PLAN

- Biography of the artist
- Description of the painting "Morning in a Pine Forest"
- Description of the painting "Rye"
- Contact



Biography of Ivan Ivanovich Shishkin

- Born into a family of merchants. After the Moscow School of Painting in 1856, the future master mainly lived in St. Petersburg. Of particular importance for Shishkin was to have natural impression received in his native place , as well as around St. Petersburg and Moscow.



"Morning in a Pine Forest"



Morning in a Pine Forest

- Shishkin painting Morning in a pine forest is one of the brightest products in creativity of the artist. The pine forest was the most favourite place where the master often worked over his pictures. When you look at this picture of Shishkin you can be mentally present in this wood, early in the morning, feeling the smell of needles.

Painting “Rye”



Painting “Rye”

- Shishkin’s “ Rye” was painted in 1878; it’s one of his most successful works. One can see a golden box and ears of rye, the distant horizon, and the composition shows us a wide space extending into the distant field. The artist didn’t choose a forest, but still his beloved mighty pines.

■ 5th April 2010

■ Ekaterina Kiseleva

■ 9 a



■ 5th April 2010