

Halloween

*Сычева Ольга Михайловна,
учитель английского языка
ГБОУ СОШ №1168 г.Москвы*



Halloween is coming!

Take the quiz!

Get set to shiver





- *What day is Halloween celebrated on?*
- *October 30*
- *October 31*
- *November 1*
- *March 31*





- *Which vegetable was originally used to make jack-o'-lanterns?*
- **Spinach**
- **Celery**
- **Carrots**
- **Turnips**



Halloween

- *What colours are associated with Halloween?*
- *Red and green*
- *Orange and black*
- *Yellow and blue*





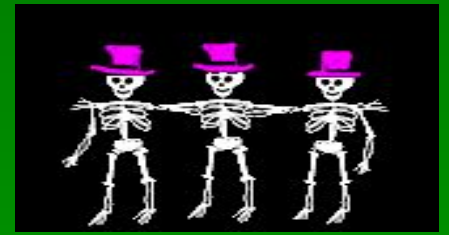
- *Which animals are the most commonly associated with witches?*
- *Black cat*
- *Red panda*
- *Green frog*
- *Yellow dog*





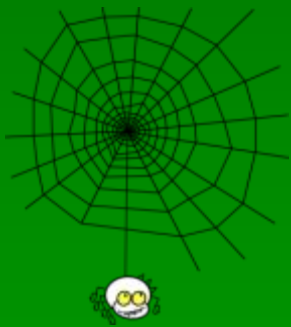
- *What sort of supernatural being is Dracula?*
- **Goblin**
- **Wizard**
- **Vampire**
- **Banshee**





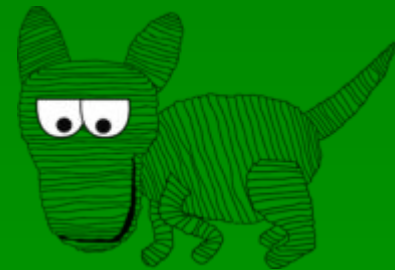
- *What is worn around the neck to keep vampires away?*
- *Garlic*
- *Pepper*
- *Onion*

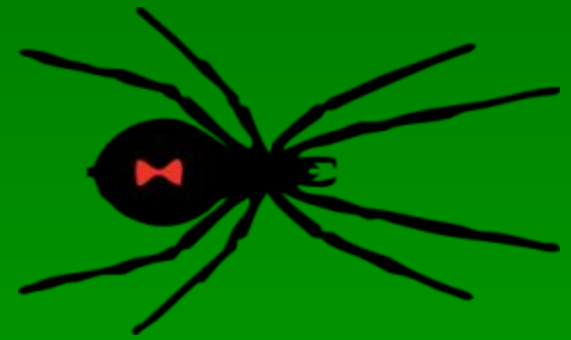




- *If you saw a mummy chasing you in Halloween, which country would you guess it had come from?*

- **China**
- **Great Britain**
- **Egypt**
- **Transylvania**





- *What does a witch use for transport?*
- *A hat*
- *A broomstick*
- *A motorbike*



Trick or Treat



- *What is a pumpkin?*
- *Animal*
- *Vegetable*
- *Mineral*
- *Fruit*





- *Which of these words is another word for “ghost”?*
- **Gnome**
- **Phoenix**
- **Sprite**
- **Phantom**



Happy Halloween



- В презентации использованы материалы сайта: <http://www.clker.com>
- <http://kids.nationalgeographic.com/>

