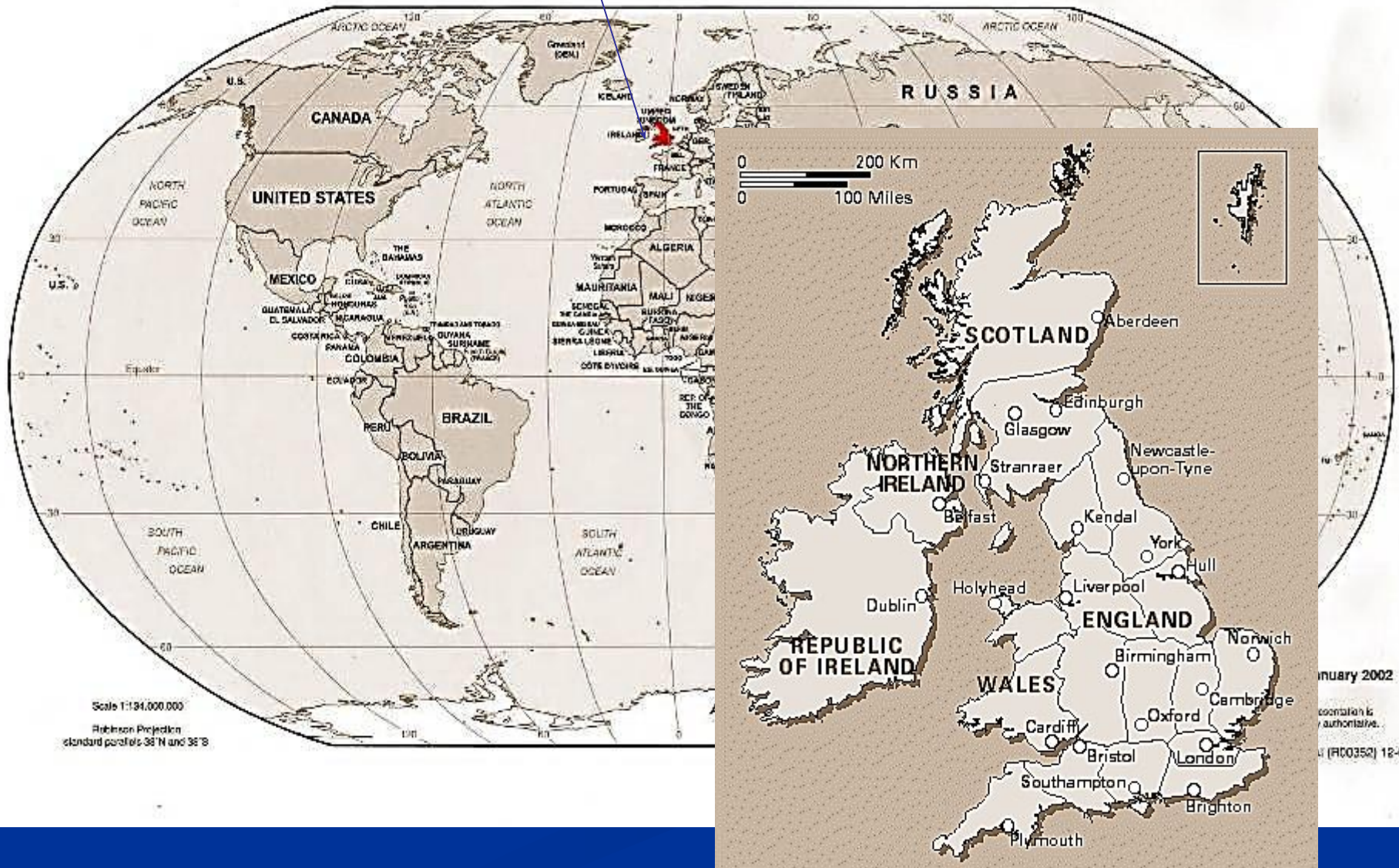


Great Britain

**(United Kingdom of Great Britain
and Northern Ireland)**

Great Britain on the Map of the World



Historical Provinces of Great Britain

Northern
Ireland



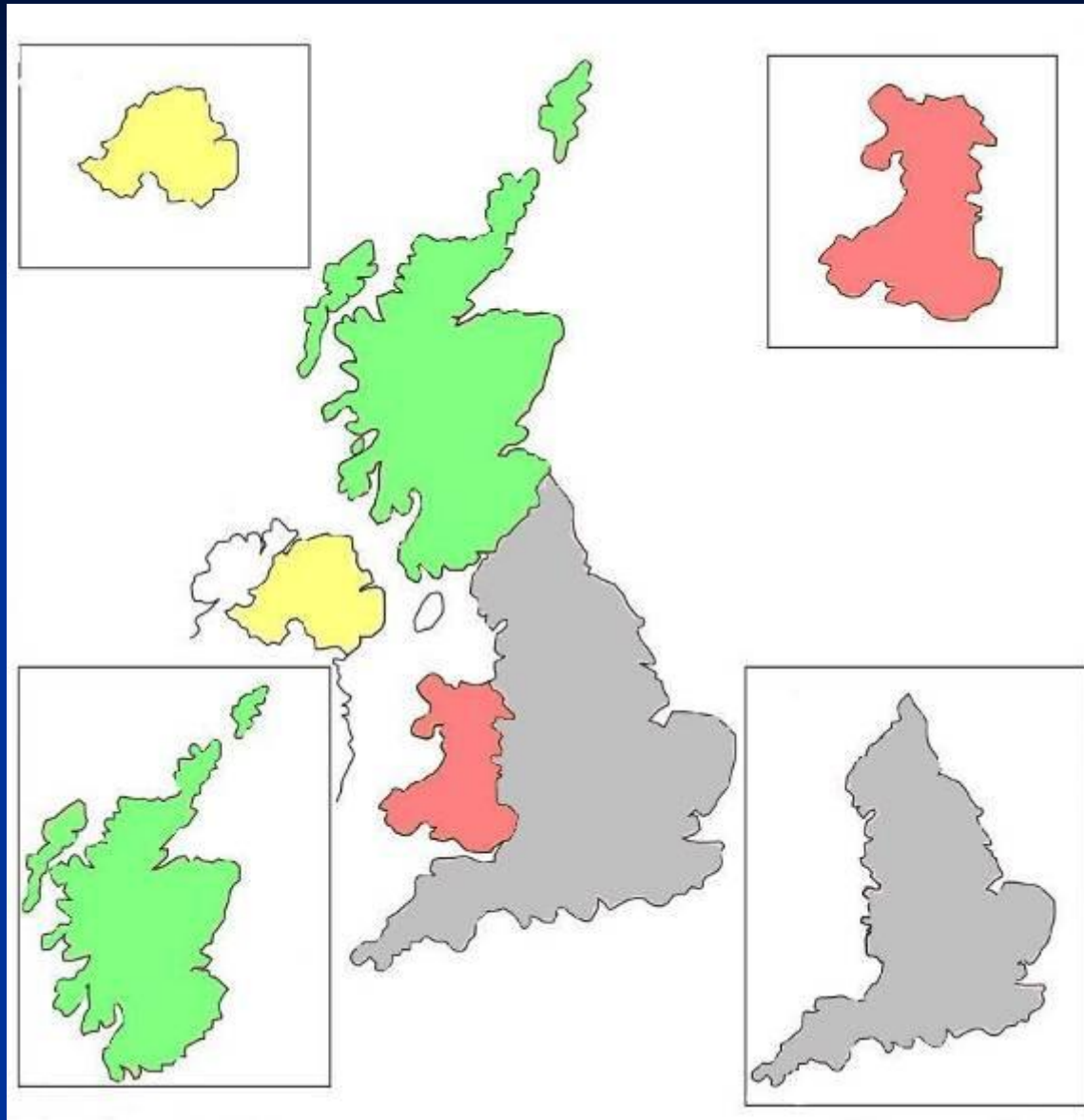
Wales



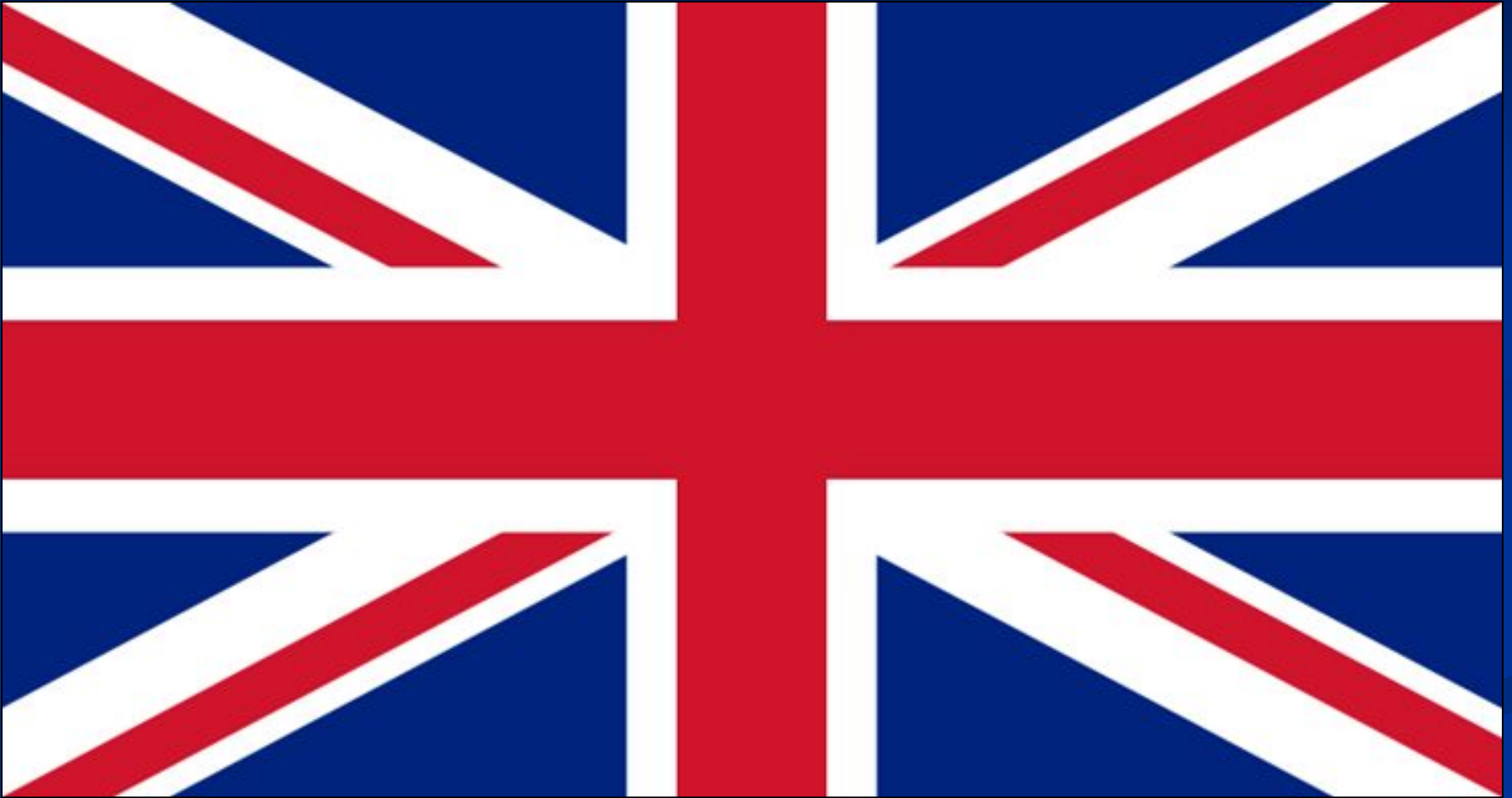
Scotland



England



The Flag of Great Britain



«Visiting-Card Great Britain»

Area: 244,4 km

Population: 59,5 mln people

The capital: London

Political system: limited monarchy (kingdom), unitary state

The region: 92 administrative units consisting of 4 historic areas

- ☐ England - 45 counties + London
- ☐ Wales - 8 counties
- ☐ Scotland - 9 regions
- ☐ Ulster (Northern Ireland) - 1 region
- ☐ Five island territories

Characteristics: 13 areas (Gibraltar, St. Helena, Falkland Islands, Bermuda, Anguilla, etc.).

Currency: pound sterling = 100 pence

Queen Elizabeth II



Wedding of
Princess Elizabeth and
Edinburgh in the graph
1947.



Queen Elizabeth
II on her 80th anniversary i
n 2006.



Coronation of
Elizabeth II in 1953.

Physiographic Map of Great Britain





Relief

Plains Midland, London.

Mountains (old): Pennine (700 m), Cambrian, Northern Scottish Highlands.

United Kingdom is washed:

- ❖ Atlantic Ocean;
- ❖ North Sea;
- ❖ Irish Sea;
- ❖ Strait Channel;

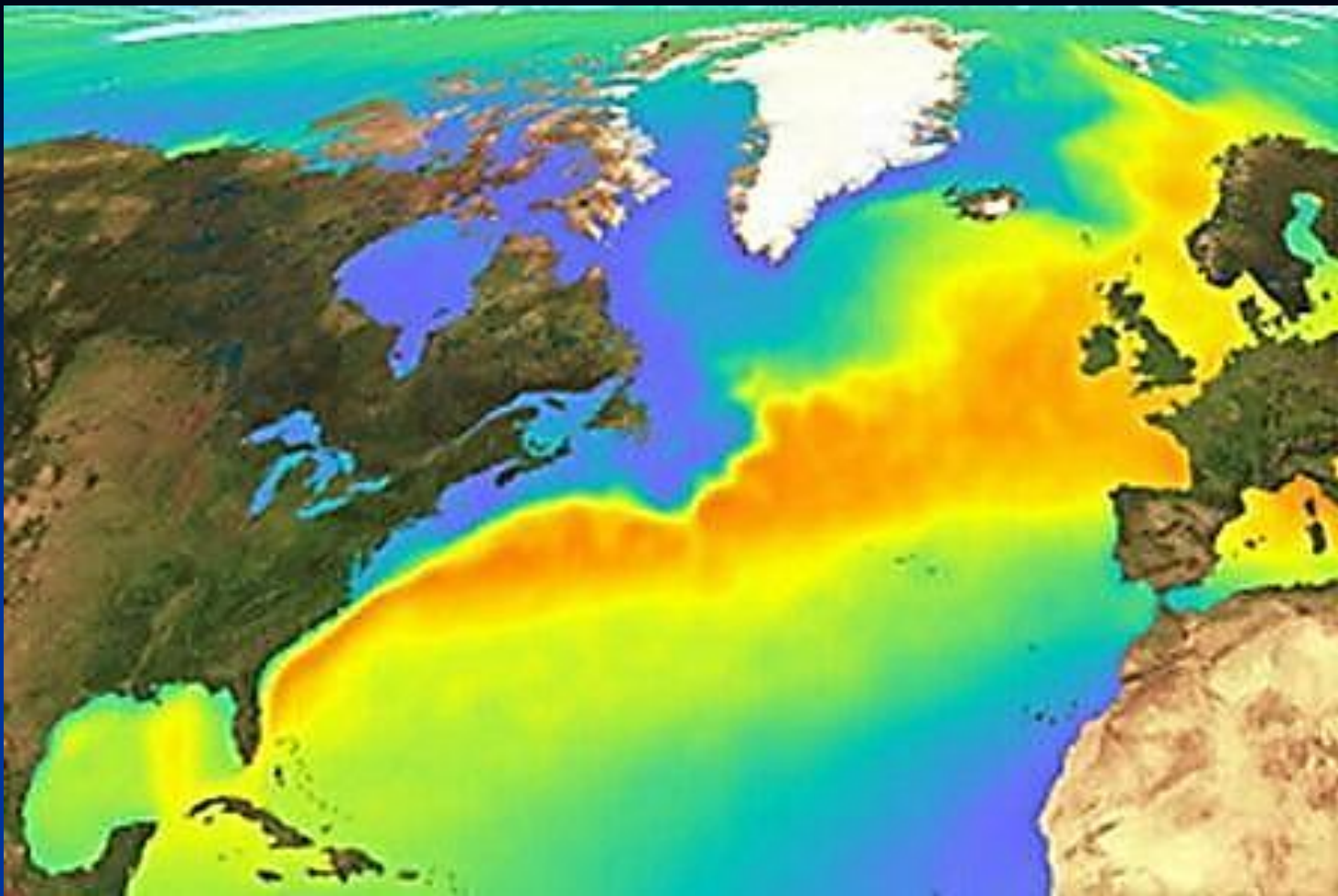




Water resources

Rivers: Thames, Severn, S
pey, Manchester canal.





climate

Marine, temperate.

NW January temperature - $+ 3,5^{\circ}\text{C}$ in July - $+12^{\circ}\text{C}$, precipitation 2000 mm.

SE January temperature - $+ 5,5^{\circ}\text{C}$ in July - $+16^{\circ}\text{C}$, precipitation 600 mm.

The capital of the UK - LONDON



← This is how it looks from space.

But yes - on the
river Thames.





Palace of Westminster to the famous hour tower "Big Ben".
Here sits the Parliament of the United Kingdom.



Tower of
London - Royal c
astle, built in the
11th century.



Tower Bridge.



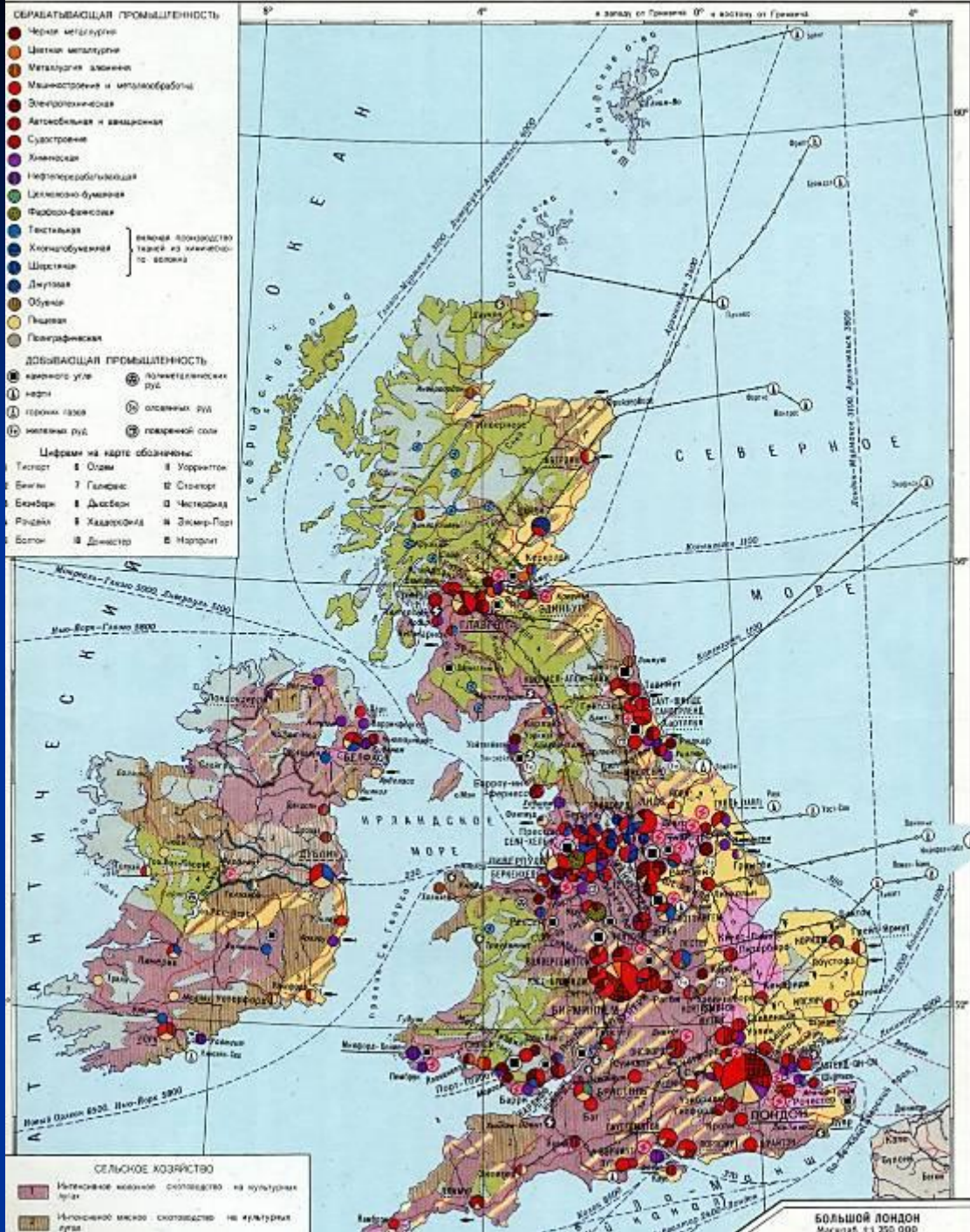
St. Paul's Cathedral, built in the 17th century by the famous English architect Christopher Wren.



The Buckingham Palace - official residence of the royal family in London.



... Decker buses ..



AGRICULTURE

post-industrial countries

A small share of
employment in agriculture

Agriculture - crops - barley, oats, wheat, sugar beet, fodder crops, horticulture (Sh., SW.England), potato (Ulster).



Brewing industry - brewery Bass.



link

www.geoknigi.com

www.google.com

www.wikipedia