

Presentation: ENGLISH PAINTERS

Prepared by
Oleksandra Pekhno
Form 11-A
School of
Chynadiievo



February 2014

William Hogarth



William Hogarth (1697-1764) was the first great English painter who raised English pictorial art to a high level of importance.

He was a man of remarkably individual character and thought. W. Hogarth had friends among famous English writers J. Swift, H. Filding.



- He was the first English painter who brought painting closer to literature and theatre.
- His engravings of modern morality subjects were aimed at a wide public, and their outstanding success established his financial independence.



Marriage la Mode



Reynolds Sir Joshua

- Sir Joshua Reynolds (1723—1792), the first President of the Royal Academy of Arts, was not only a painter but the founder of the academic principles of the "British school".
- Reynolds was the most outstanding portraitist of the 18th century.



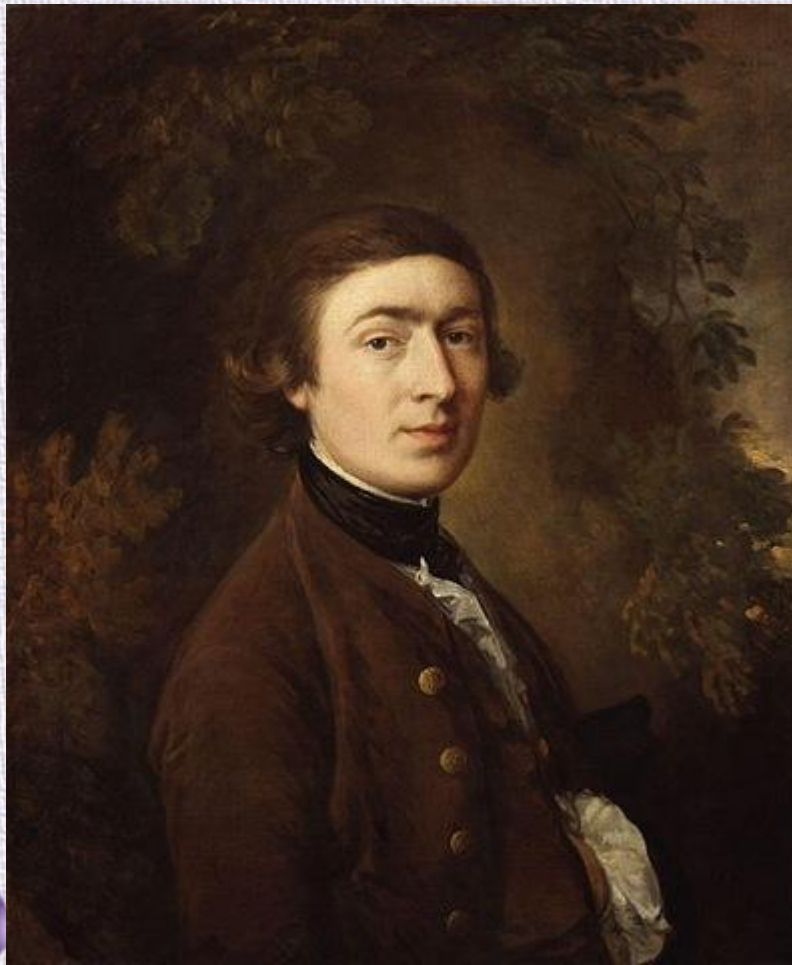


In his pictures he did not only paint portraits but produced characters.



**Love Me,
Love My Dog**

Thomas Gainsborough



- Thomas Gainsborough (1727—1788) was a brilliant portrait painter.
- A good amateur violinist and a lover of the drama, he was an artistic person.
- T. Gainsborough is the creator of the great English school of landscape painting.
- His great love for the English country and his delicate understanding of nature are felt in his pictures.



Landscape

Lloyd and Lucy



Lady In blue



John Constable

- John Constable is one of the greatest landscape painters.
- He was the first landscape painter who considered that every painter should make his sketches direct from nature, which is working in the open air.
- Constable was a realist.





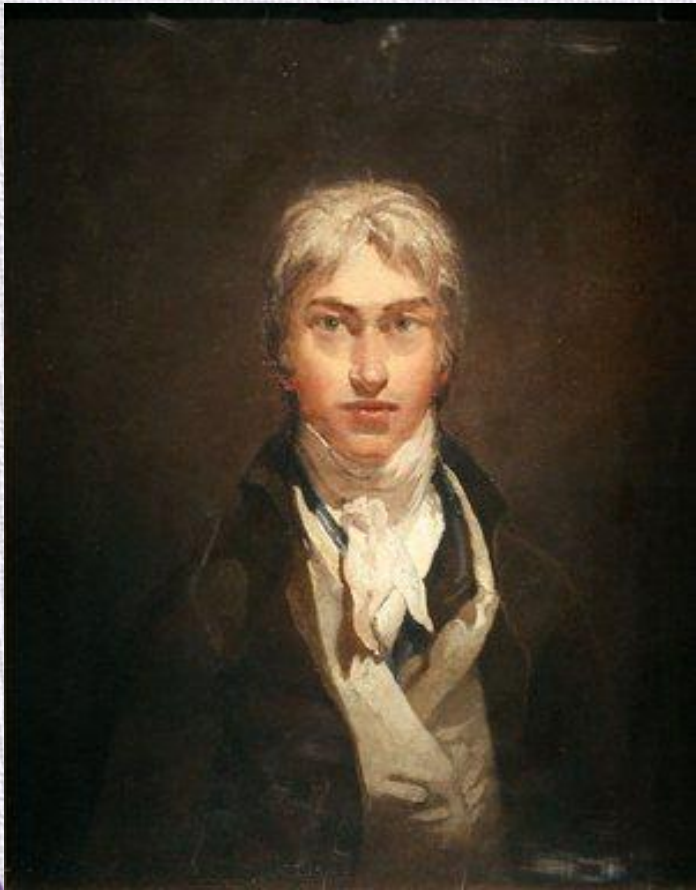
Constable may truly be considered the father of modern landscape painting.





Flatford Mill

Joseph Turner

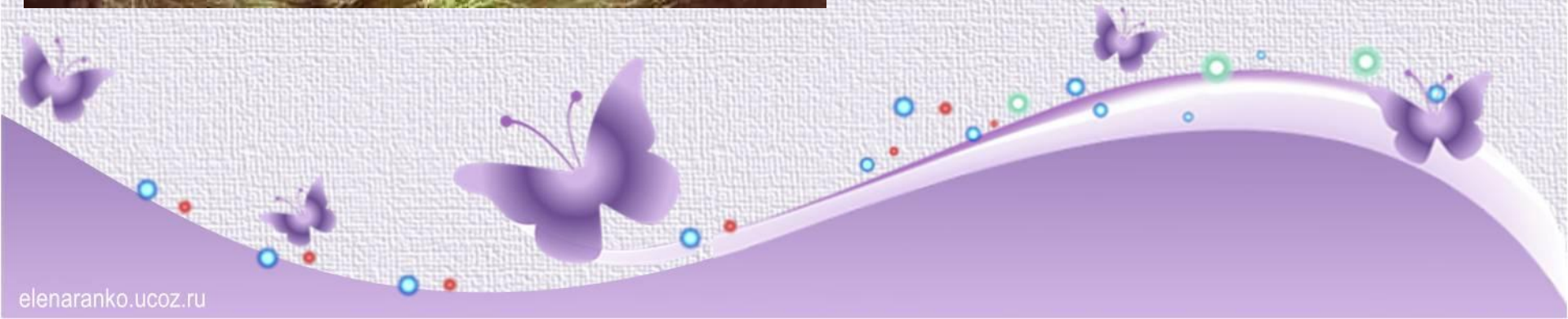


- Another famous English painter was Joseph Turner (1775—1851), whose business was to paint the light.
- He proved that with the help of light it is, possible to show qualities of any subject.
- We know practically nothing about Turner's life.

The Shipwreck



Snow Storm



THE END

