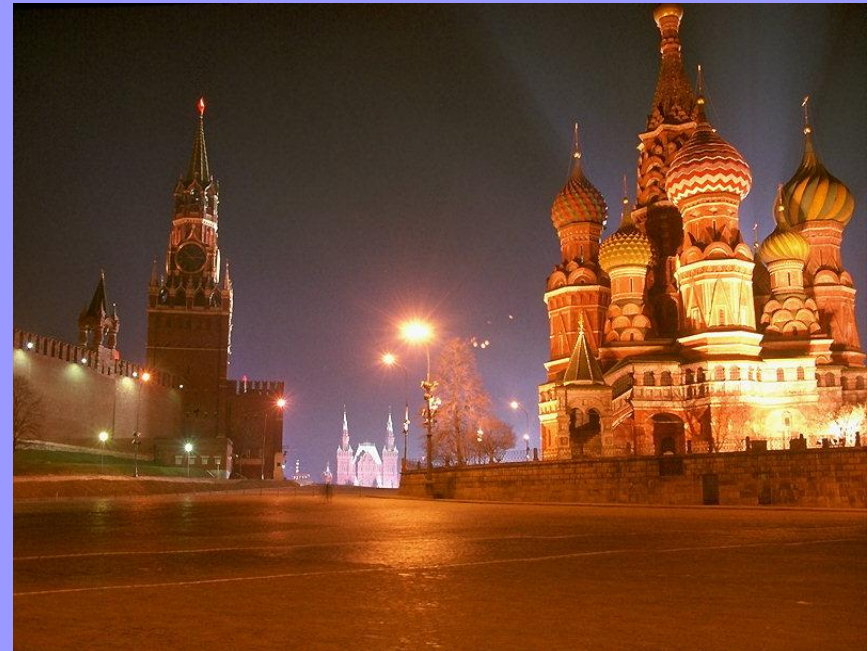
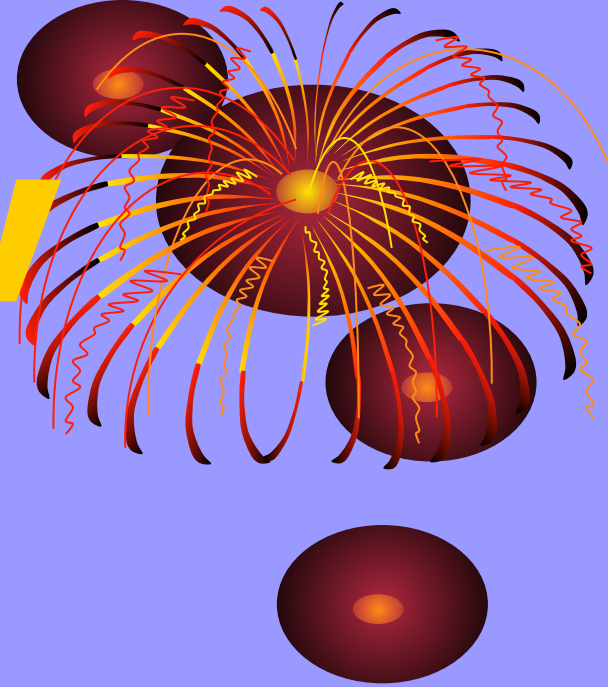


Moscow



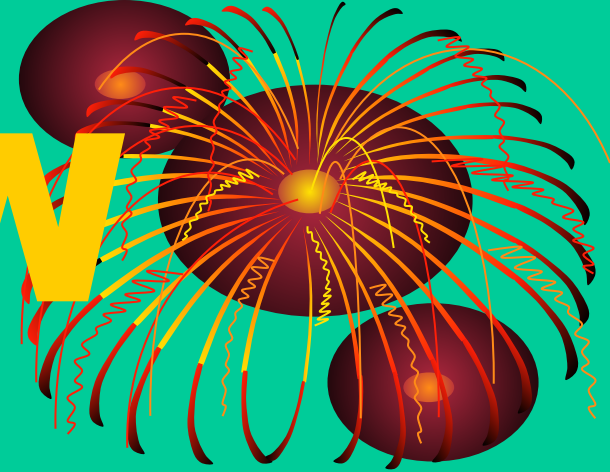
Moscow



- **For the first time Moscow was mentioned by the chroniclers in 1147. At that time Russian lands began to unite round Moscow, which led to the establishment of a strong centralised state.**
- **During its long history Moscow was exposed to several invasions. In 1237 it fell under the power of the Golden Horde. Moscow began to rise in the 14-th century. Under Ivan III the Great, in the mid-fifteenth century, Moscow became the principal city of the state of Muscovy. During the Time of Troubles Moscow was occupied by the Polish invaders but they were defeated by the popular levy headed by Minin and Pozharsky.**



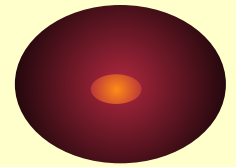
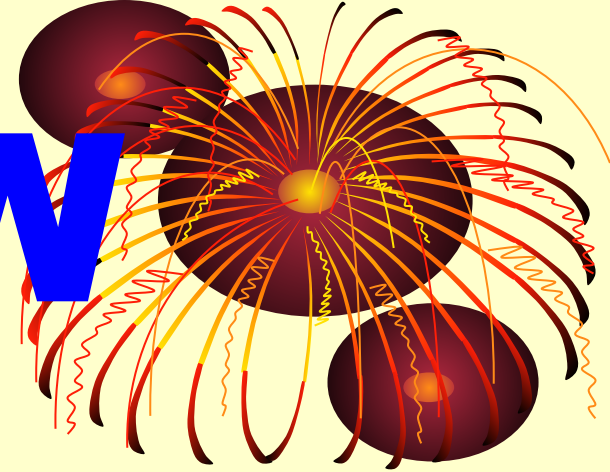
MOSCOW



- . The army of Napoleon entered Moscow on September 15, 1812. The emperor was disappointed that no Russian bowed forward, offering him the city keys. Napoleon settled in the Kremlin. The city was set ablaze. Fires spread to the edge of the Kremlin. Napoleon tried to open peace talks. But Alexander I, who was in St. Petersburg, did not wish to discuss peace. Napoleon left Moscow. His warriors were routed by the Russian troops. In 1941 the German armies were defeated not far from Moscow



MOSCOW



- There are many places of interest in Moscow. There are a lot of theatres in the city.

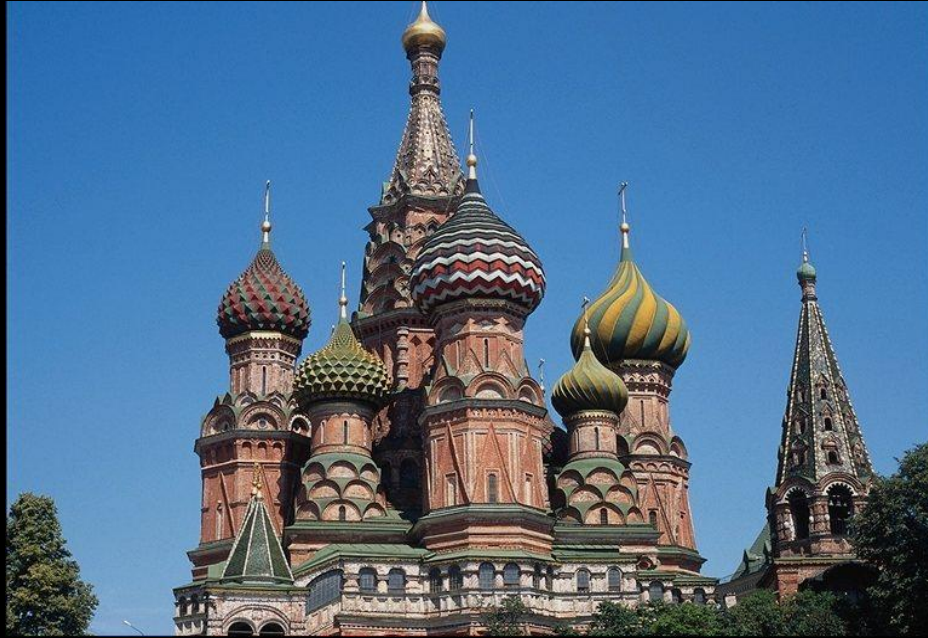
The Historical Museum, the State Pushkin Museum of Fine Arts, the State Tretyakov Gallery are known all over the world. The Bolshoy, Mali and Art theatres are famous too.



The Kremlin



- **The Kremlin — the oldest historical and architectural centre — is the heart of Moscow. At first the Kremlin was a wooden fort. Under Dmitry Donskoy the Kremlin was built of white stone. Redbrick walls and towers replaced the walls of white stone at the end of the 15 th century. The most ancient tower is the Secret one. It was built in 1485. The Saviour Tower with its Kremlin chimes is the symbol of Russia. The chiming clock was established in 1625. Ivan III invited Italian architects to construct the Kremlin cathedrals. In 1547 Ivan the Terrible was the first Russian tsar to be crowned in the five-domed Assumption Cathedral. From 1721 the coronations of all Russian Emperors were held there. The Archangel Cathedral was the burial place of the Russian Princes and Tsars. Grand Prince Ivan Kalita was the first to be buried here. Altogether there are 53 royal tombs there. The Annunciation Cathedral is the main Russian Cathedral. It is famous for the icons created by Andrew Rublev and his apprentices. Not far from the Assumption Cathedral we can see the Faceted Palace. It is the oldest secular building in Moscow. All coronation feasts were held here. Ivan the Great Bell Tower, the construction of the 16th century, rises in the centre of the Kremlin.**

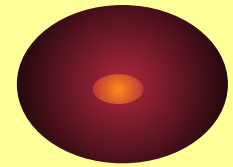
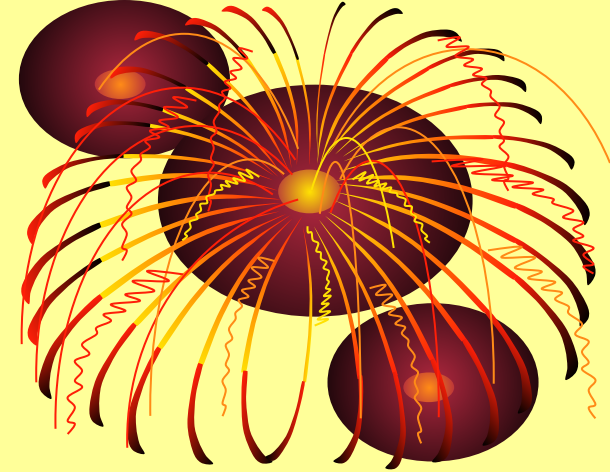


The Kremlin

- On the stone pedestal at the foot of the Bell Tower stands the Tsar-Bell, the largest bell in the world. The bell was cast for the Assumption Belfry. It was damaged during the great fire of Moscow in 1737. In 1836 it was put on the pedestal. Not far from it is the Tsar-Cannon. Senate Square is located between the Senate and the Arsenal. The Grand Kremlin Palace is situated not far from Senate Square. The Russian Emperors usually stayed in the palace when they came to Moscow. It was designed by the architect K. A. Ton in 1840. The Armoury Chamber is the famous museum where military trophies, Tsar's regalia and church ceremonial items are displayed. The Kremlin workshop was made a museum of military glory after the battle of Poltava in 1709 by Peter's I order.



All the ceremonies are held in Red Square. At its one end we can see St. Basil's Cathedral the Blessed. It was built in the mid-16 century for Tsar Ivan IV to commemorate the victory over the Golden Horde. Lobnoye Mesto, a lifted railed platform of white stone, is situated to the left of St. Basil's Cathedral.



The Kremlin

Until recently it was a monument of great significance. The Historical Museum locks the other end of Red Square. Next to it one can see the reconstructed Iverskay Chapel and the Resurrection gates. Alexander Gardens, laid out at the beginning of the 19-th century, are located beneath the Kremlin walls. The Tomb of the Unknown Soldier is near the entrance to the Gardens. It is the major memorial to the warriors of the Great Patriotic War.

