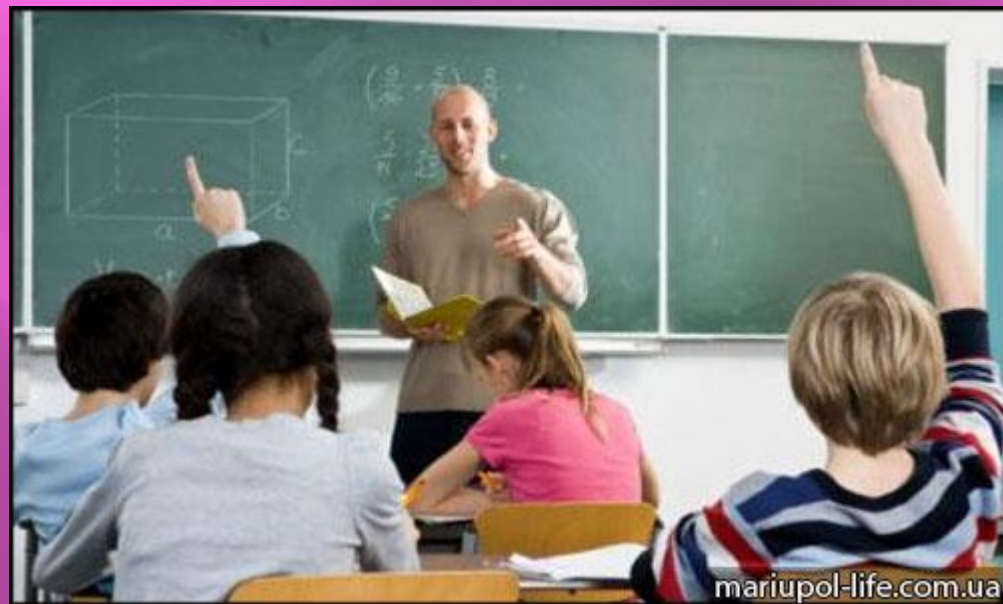


Secondary education in Russia



Period ['piəriəd] период



secondary ['sekəndəri]
вторичный, среднее,
дополнительный

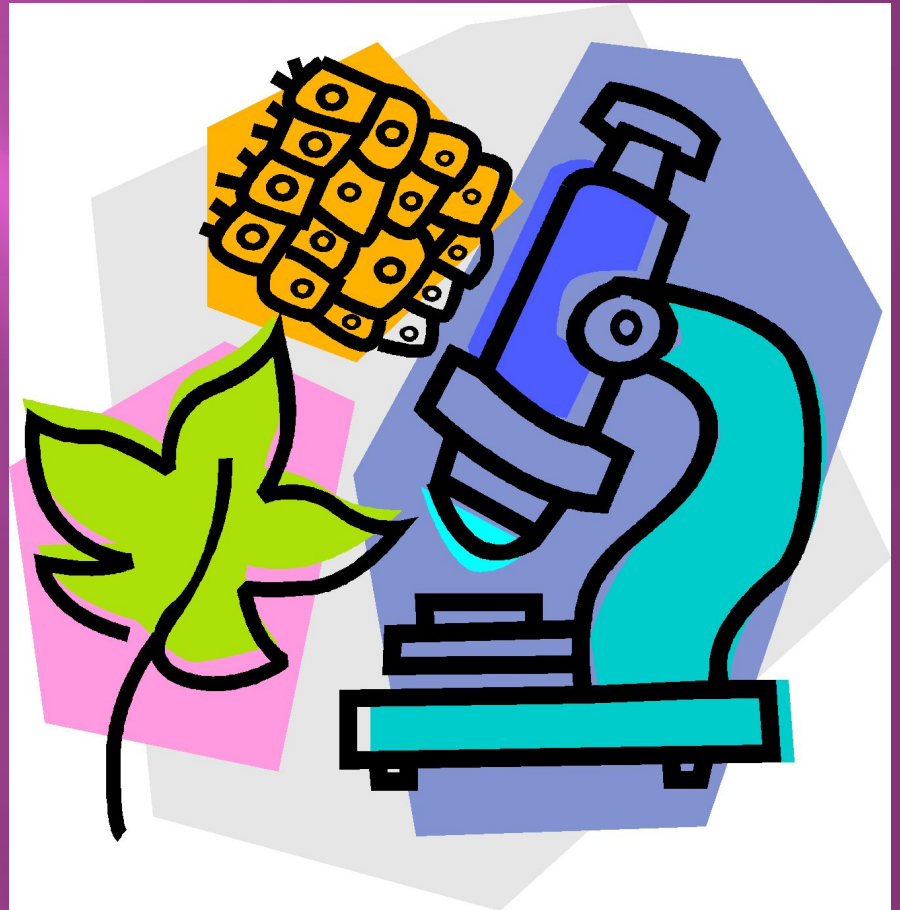


Depend on [dɪ'pend]
зависеть



biology [baɪ'ɒlədʒi]

биология



Geography [dʒi'ɒgrəfi] география

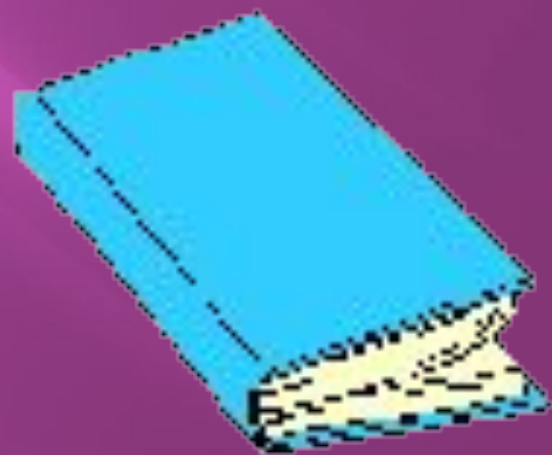


chemistry ['kemɪstri]

ХИМИЯ



incomplete [,ɪnkəm'pli:t]
неполный, незавершенный



whether ['weðə(r)]
либо



continue [kən'tɪnjuː]

продолжать



leave [li:v]

оставить



institution [,instɪ'tjuːʃn]
учреждение



Such as [sʌtʃ əz] такие как

Else [els] другие, ещё

Decide [dɪ'saɪd]

принимать решение

Enter ['entə(r)] поступать

Graduation [,grædʒu'eɪʃən]

окончание, окончание

ШКОЛЫ

Pattern ['pætɪn]

характеристика

Exception nowadays

[ɪk'sepʃn 'naʊədeɪz]

исключения в наши дни

particular [pə'tɪkjʊlə(r)]

определённый

apart [ə'pɑ:t] помімо



Education plays a very important role in our life. It is one of the most valuable possessions a man can get in his life. The most important period is the secondary school, which starts from the 4th or 5th grade, depending on school. This is the time when children start learning Biology, Geography, Chemistry, Physics, Computing, and many other new subjects. In Russia the nine-year basic incomplete secondary education is compulsory.

At the 9th grade children face a very important period in their life. They have to choose whether to continue school education, or to leave for other types of educational institutions, such as college, specialized schools and else. If the pupil decides to continue studying in high school, which lasts for two years, he can enter the university after school graduation. Of course, it's only the general pattern of education in Russia, but there can also be some exceptions nowadays. For example, there are lots of special schools, where they pay attention only to particular subjects. Also, apart from state schools, there are a number of private schools, where education is not free of charge.

Контроль знания лексики

Период
Средний
Зависеть
Биология
География
Химия
Неполный
Либо
Продолжать

Period
secondary
Depend on
biology
Geography
chemistry
incomplete
whether
continue

Оставить
Учреждение
Такие как
Ещё
Принимать
решения
Поступать
Окончание

leave
institution
Such as
Else
Decide
Enter
Graduation

leave
institution
Such as
Else
Decide
Enter
Graduation

Оставить
Учреждение
Такие как
Ещё
Принимать
решения
Поступать
Окончание

характеристик

а

Pattern

Exception nowadays

исключения в

наши дни

particular

Определенны

м

apart

ПОМИМО