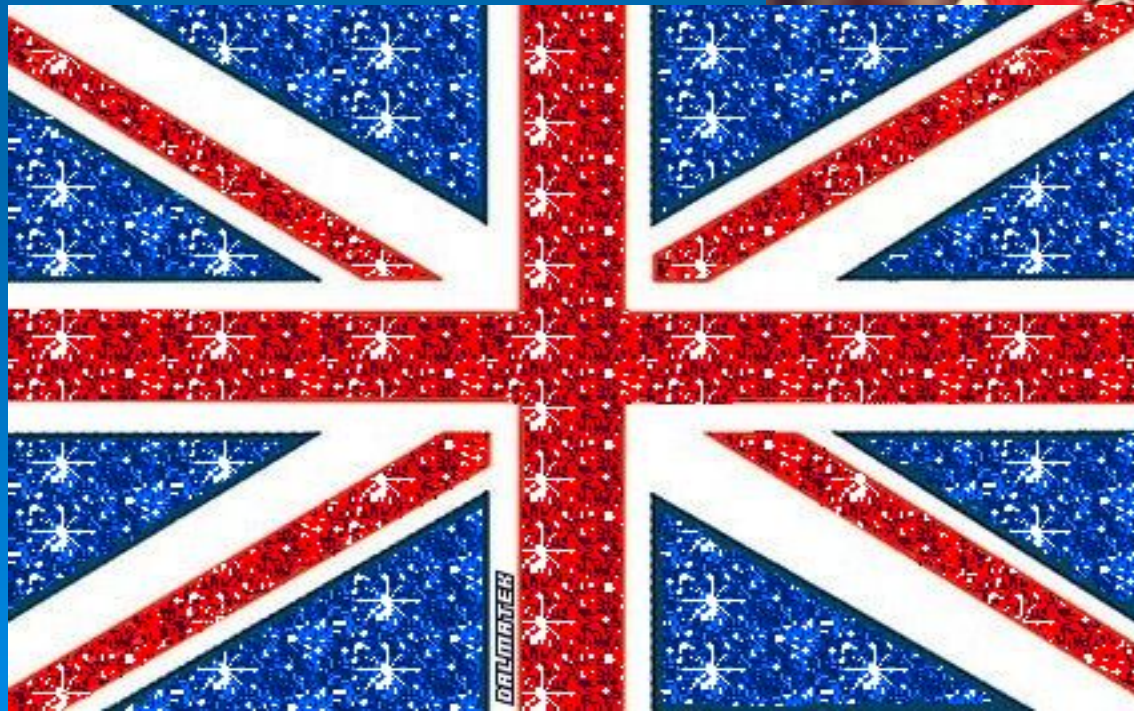


Queen Elizabeth II



Royal family

God save our gracious











QUEEN ELIZABETH II

* 1926

m. Philip, Duke of Edinburgh,
son of Prince Andrew of Greece



Charles
Prince of Wales
* 1948

m. Lady Diana Spencer
daughter of Earl Spencer
divorced 1996
† 1997



Anne
Princess Royal
* 1950

m. Captain Mark Phillips
divorced 1992
m. Commander Timothy
Laurence



Andrew
Duke of York
* 1960

m. Sarah Ferguson
divorced 1996



Edward
Earl of Wessex
* 1964

m. Sophie Rhys Jones
married 1999



Prince William
of Wales
* 1982



Prince Henry
of Wales
* 1984

Peter Phillips
* 1977

Zara Phillips
* 1981

Princess Beatrice
of York
* 1988

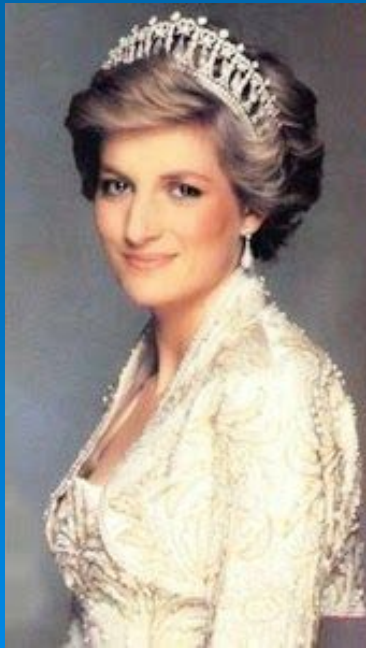
Princess Eugenie
of York
* 1990

Prince Charles and his sons





Prince ss Diana

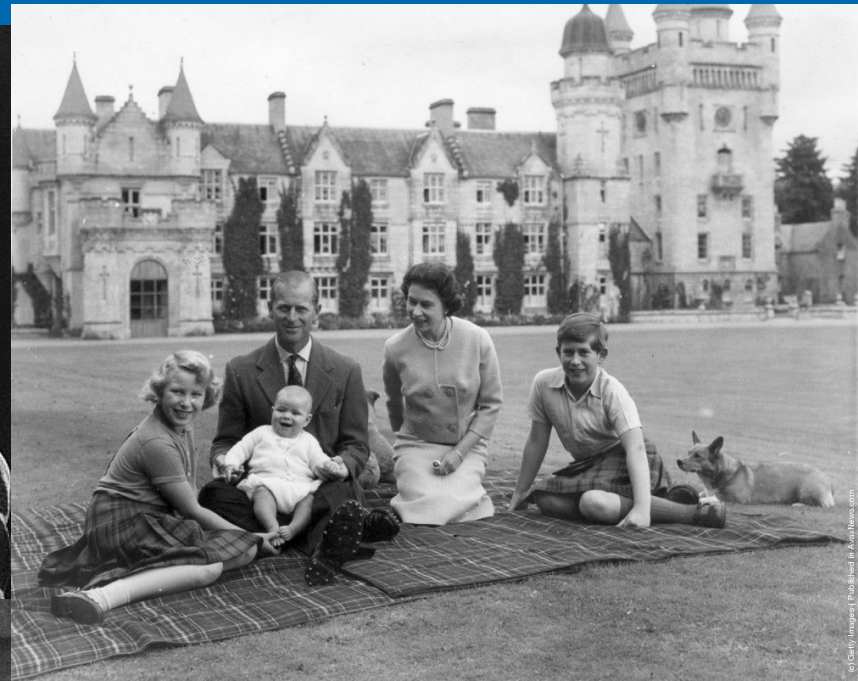


Royal family



Royal family





Answer the questions!

- 1. Is Britain a monarchy?**
- 2. Who rules the country?**
- 3. Is Queen's power limited by the Parliament?**
- 4. What political parties do you know?**







4
5
6



S.



Part

III

1. Princess Anne is the Queen's only daughter

True/False

2. She was voted Britain's Sportswoman of the Year. True/False



3) She wrote a series of detective novels.

True/ false

4) Prince Edward is a television producer with his own company. **True/**

false



What are the Royal



Buckingham Palace



**What is the address of
Her Majesty the Queen?**



Assessment. The evaluation

sheet
Set a rating for a lesson,
according to the following
criteria:

1	Name, surname	
2	As I was ready for the lesson	
3	How I have worked in the classroom	
4	How I have learned new topic	
5	Teacher's mark:	

THANK YOU!

