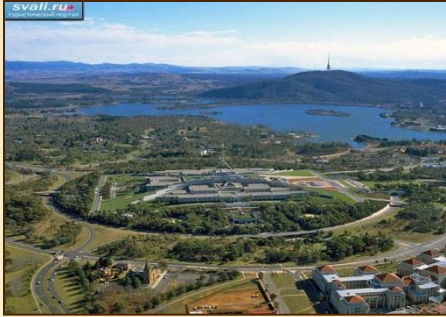


# Welcome to Australia



# What Do You Know about Australia?



- What is the capital of Australia?  
a. Sydney   b. Melbourne   c. Canberra
- Which city is the oldest and largest?  
a. Canberra   b. Sydney   c. Darwin
- Which is a popular Australian animal?  
a. bear   b. kangaroo   c. fox
- Who are the Australian natives  
a. Eskimos   b. Aborigines   c. Indians
- Who discovered Australia?



- a. Columbus   b. Captain Cook   c. Lewis and Clark

- What is the official Language in Australia?  
a. English   b. German   c. Spain





**Australia is situated south of Asia, between the Pacific and the Indian Oceans. Australia is a continent, a country and an island at the same time. Australia is located in the southern hemisphere.**





# Some facts



- OFFICIAL NAME : Commonwealth of Australia
- CAPITAL: Canberra
- TOTAL AREA: 7,700,000 sq.km
- POPULATION: 20 million people
- HEAD OF STATE: Queen Elizabeth II represented by Governor-General
- FORM OF GOVERNMENT: Constitutional monarchy
- PORTS: Sydney, Melbourne, Brisbane
- LONGEST RIVER: the Darling (2,740 km)
- HIGHEST POINT: Mount Kosciusko (2,230 m)
- NATURAL RESOURCES: coal, zinc, nickel, gold, wool
- NATIONAL HOLIDAY: Australian Day , 16 January (1788)
- MONEY: basic unit – Australian dollar
- NATIONAL SYMBOLS: Kangaroo and Emu
- NATIONAL ANTHEM: "Waltzing Matilda"





Captain James Cook discovered Australia in 1770. He was sent to discover the huge land that many people believed was south of the equator. He landed south of present day Sydney in New South Wales. He claimed this part of the land for the King of England.

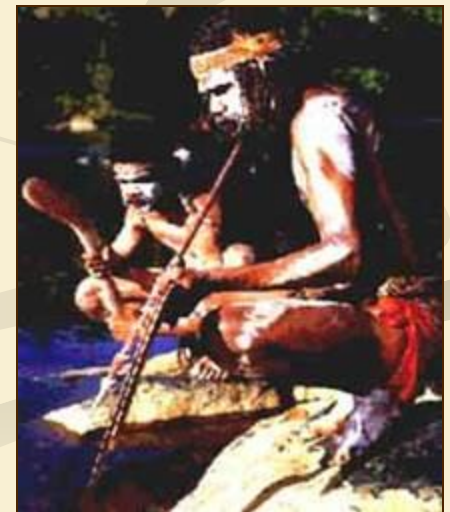
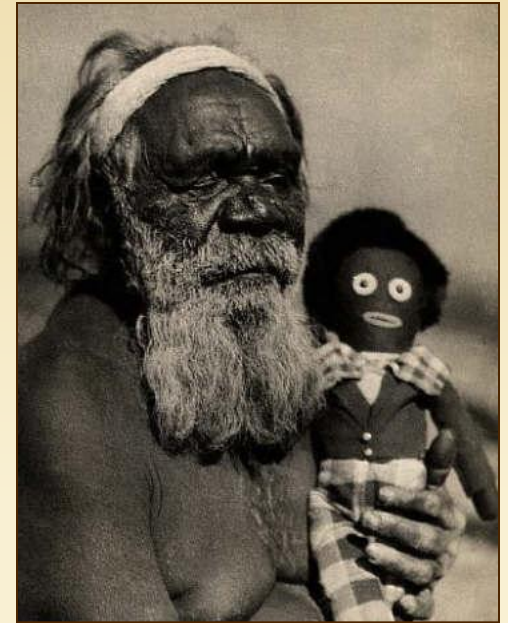
In 1851 gold was discovered about 300 km west of Sydney. People rushed to the gold fields to find their fortunes. This attracted robbers called bushrangers.





# Aborigines

The Aborigines are the Australian natives that had been living there for thousands of years before the first Europeans came to Australia in the 1600s.





The flag of Australia is the only one to fly over a whole continent. The small Union Jack represents the historical link with Britain, the large seven-pointed star represents the six States and Territories, and the small stars from the Southern Cross – a prominent feature of the southern hemisphere night sky.

Australia's coat of arms – the official emblem of the Australian Government – was granted by George V in 1912. The arms consist of a shield containing the badges of the six states. The supporters are native Australian fauna – a kangaroo and an emu. A yellow-flowered native plant, wattle, also appears in the design.



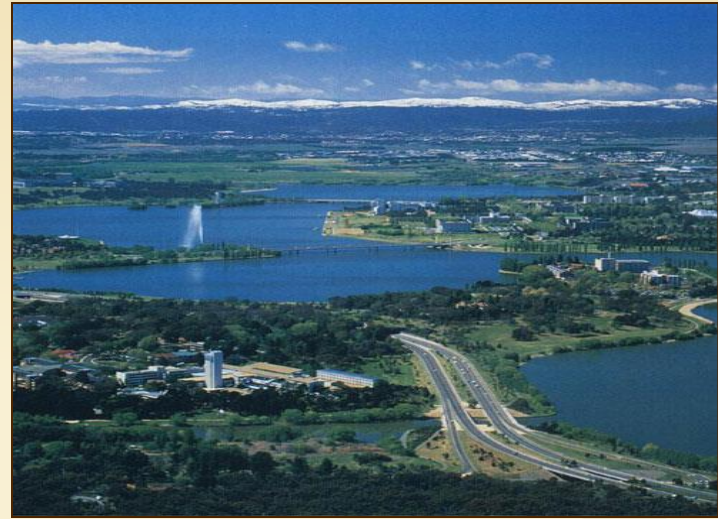


# Canberra

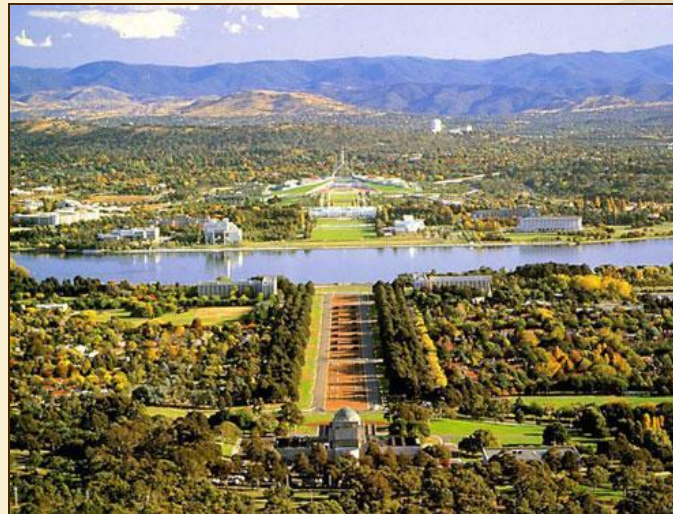
Canberra is the capital of **Australia**. It is a very young city.  
Population is about **310,000** people.



Capitol Hill



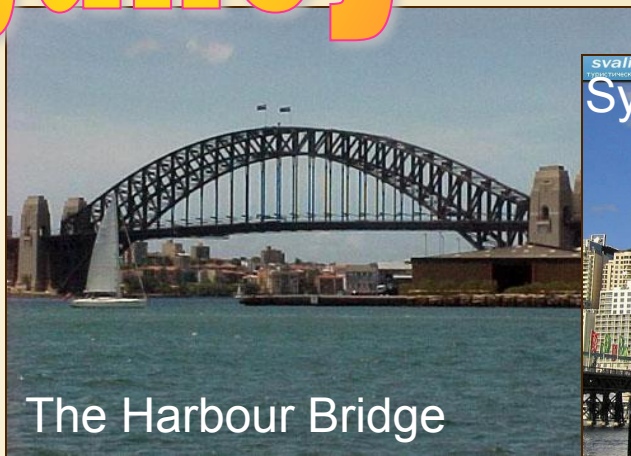
Canberra Fountain





# Sydney

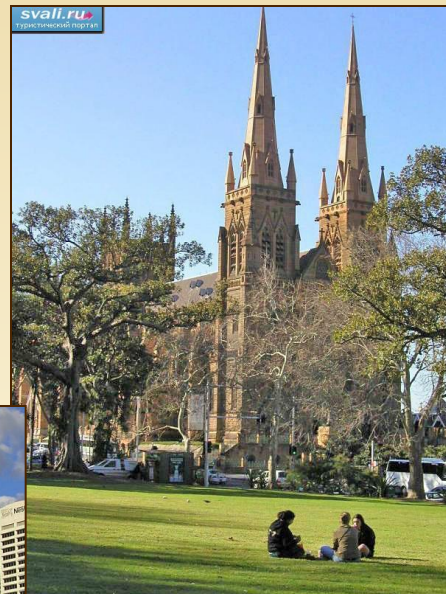
Capital of New South Wales.  
Leading industrial city.  
Population: 3,200,000  
people.



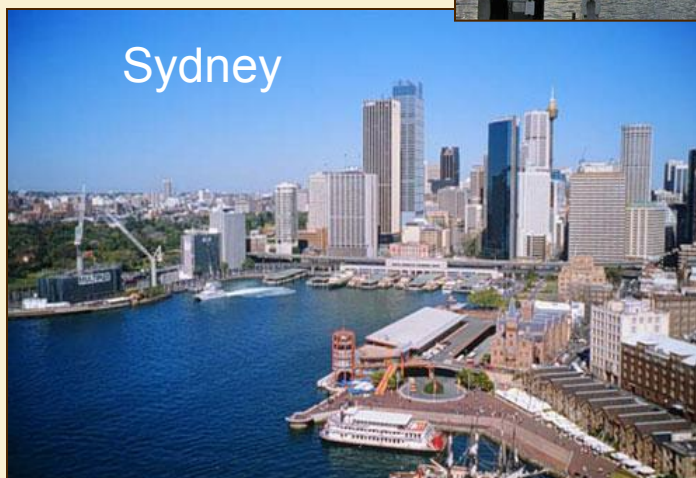
The Harbour Bridge



Sydney AMP Tower



St. Maria Cathedral



Sydney



Opera House



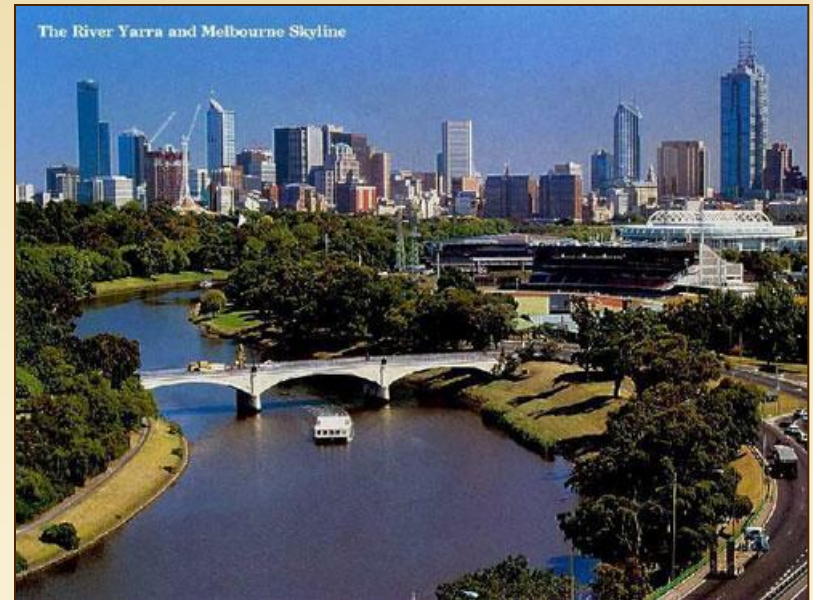
Capital of **Victoria**. The world's most livable city.  
Population: **3.200.000**

# Melbourne

Old House



Melbourne Bridge



Train Station



Capital of **Queensland**. It is a year-round  
vocation place. Population is about  
**1,400,000** people.



Brisbane Skyscrapers

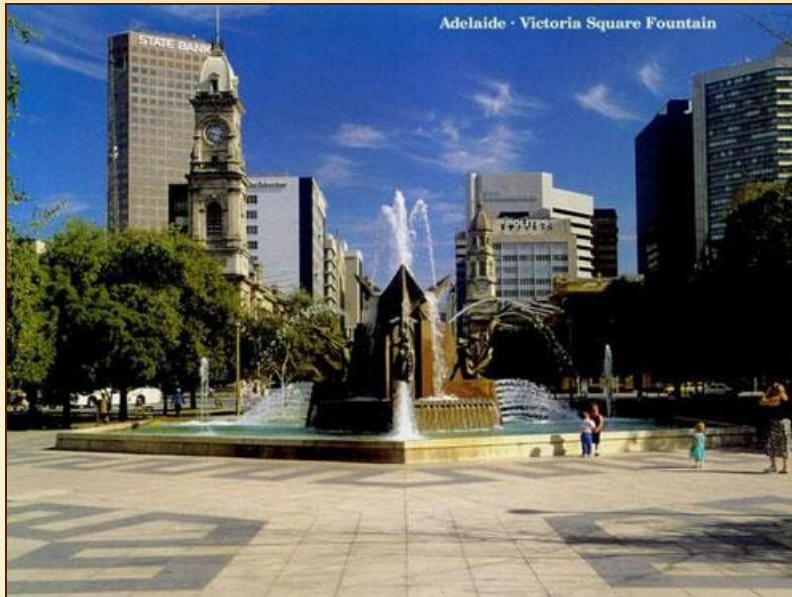


Brisbane Bridge



Brisbane

Capital of **South Australia**. A pretty and industrial city.  
Population: **1,100,000** people.



Victoria Square Fountain



# Adelaide





Capital of **Western Australia**.  
One of the best climates in  
Australia. Population:  
**1.200.000** people.



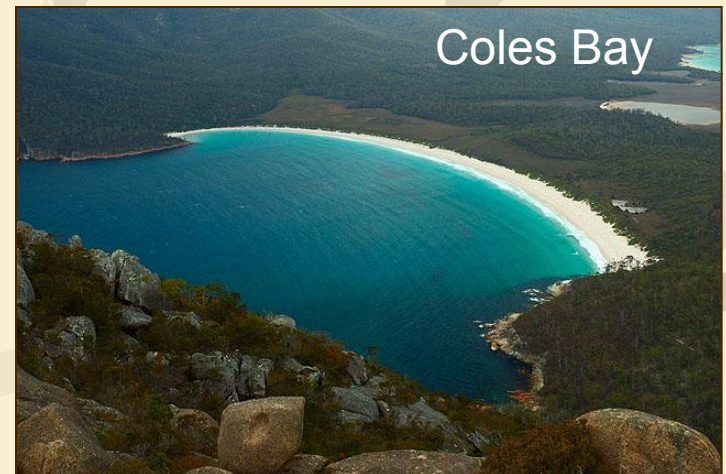
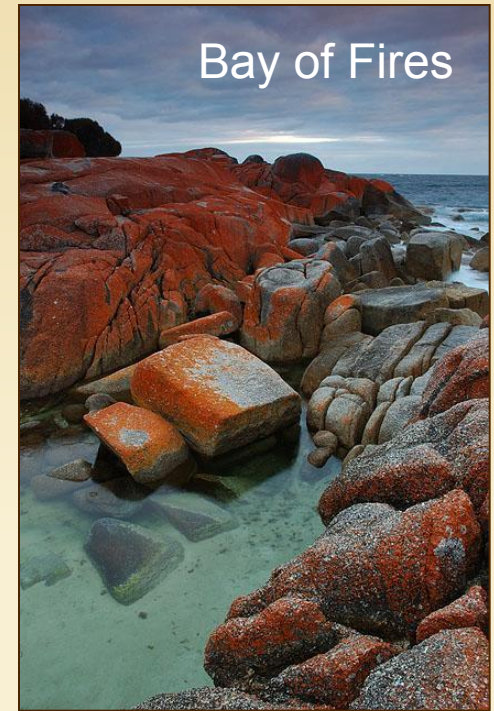
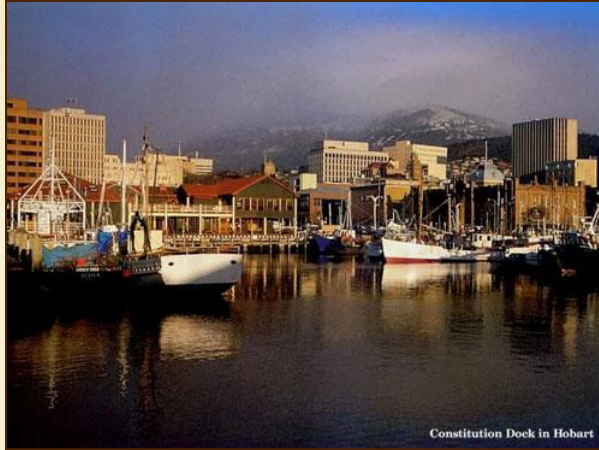
King's Park

# Perth



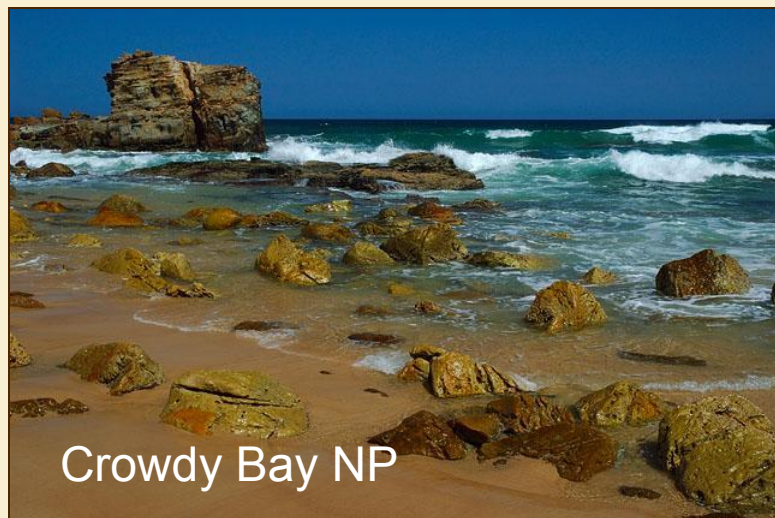
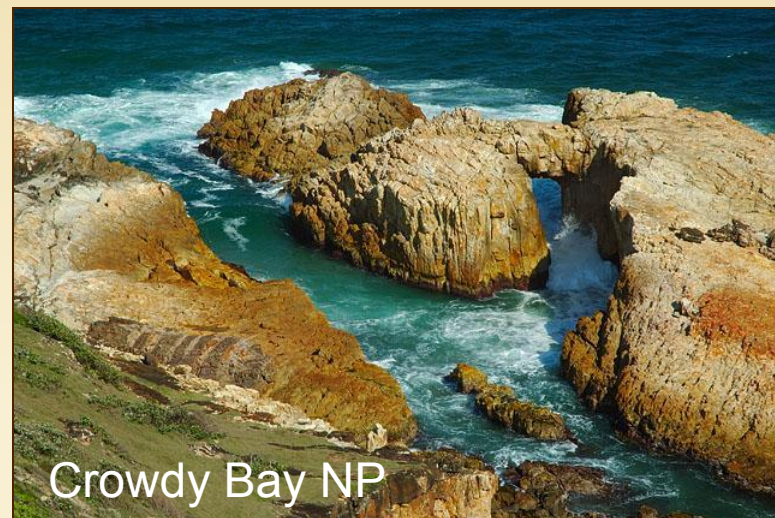
# Hobart

Capital of island-state  
**Tasmania**. Winters are  
very cold. Population of  
about **200,000**.





# National Parks

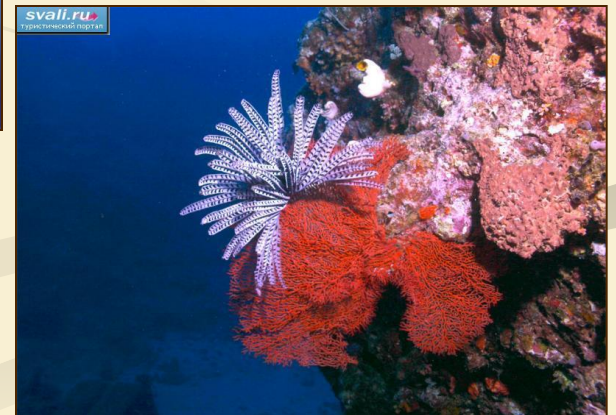
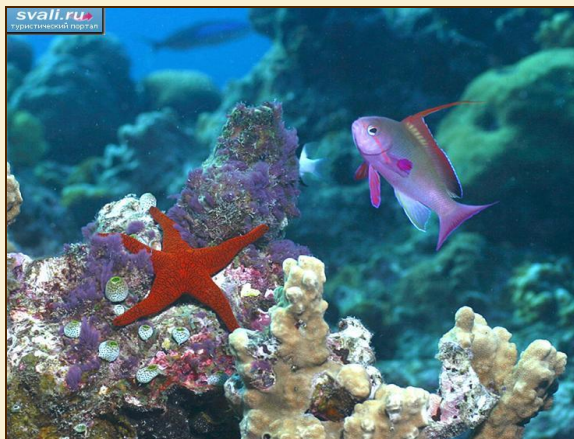
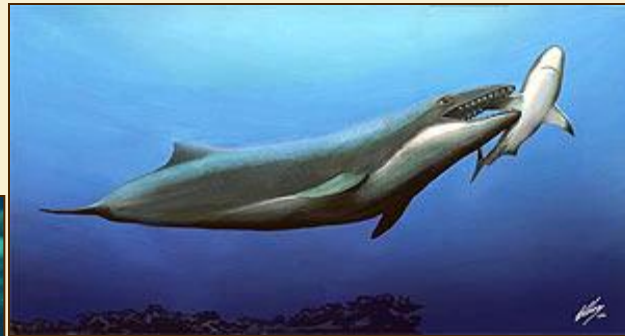
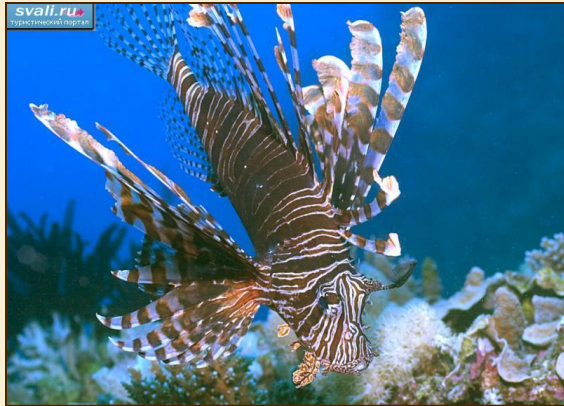




# Great Barrier Reef

It's the world's largest coral reef (over 2000 km). It stretches along the east coast of **Queensland**. It's made up of over 2900 individual

reefs very close to each other.



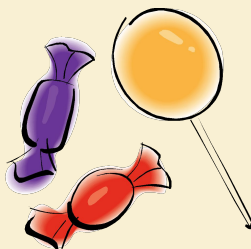
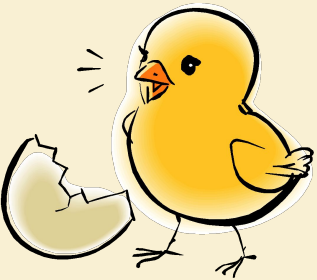




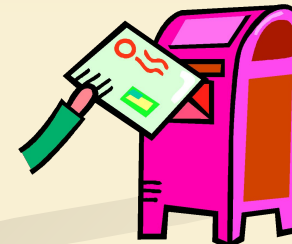
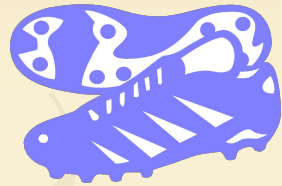
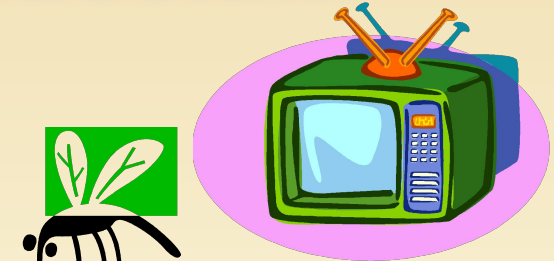
Australians really love nature. They try to protect their nature and their animals.



# How do you say it in Russian?



British	Australian
barbecue	barbie
kangaroo	roo
mosquito	mozzie
chicken	chook
candy	lollie
slippers	thongs
TV	tellie
girl	sheila
form	year
sheep	jumbuck
cinema	pictures
postbox	letterbox
trainers	runners
freeway	main road





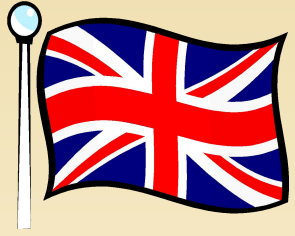
# The first Australians

**The First people in Australia were Aborigines. They arrived there about 12,000 years before from southern Asia. They had very rich forms of art, painting, song, poetry and mythology. The lives of aborigines stayed almost the same for thousands of years until the Europeans came to live in Australia in 1778.**

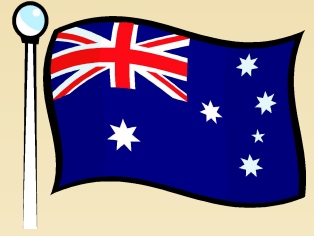
**In 1770 J. Cook landed in eastern Australia and declared that it belonged to Britain. In 1778, the British government began sending the first prisoners to Australia. Overtime many people arrived from Britain and Europe. Life was difficult. There was very little water and the climate was very hard.**

**The Europeans suffered a lot in Australia but the Aborigines suffered a lot more. Europeans stole their land and killed thousand of Aborigines. They also brought new diseases with them. In parts of Australia, not one Aborigine survived. Today aborigines continue to live in Australia but there culture in under threat. In 1770, there were about 300,000 Aborigines. Now, there are 120,000. It is becoming harder and harder for them to continue their traditional way to live.**

**Today Australia is a modern, industrial country, independent from Britain since 1931. The Commonwealth of Australia consists of 6 states and two provinces. It is the world's biggest producer of wool, bauxite and important producer of wheat, meat, sugar and fruit.**



# Numbers and Dates



What do these numbers and dates refer to?

For example:

12,000 years ago: first people arrived in Australia

120,000

1970

300,000

7,700,000

20,000,000

1978

6

1931



Match the name of provinces with the names of it's capitals

Match the name of provinces with the names of it's capitals

Hobart

Queensland

Western Australia

Melbourne

Sydney

Tasmania

Victoria

Perth

Brisbane

South Australia

Adelaide

New South Wales



**Adelaide**

**South Australia**

**Melbourne**

**Victoria**

**Sydney**

**New South Wales**

**Brisbane**

**Queensland**

**Perth**

**Western Australia**

**Hobart**

**Tasmania**



# Tell about Australia using the words

- **Geographical location:** ... south of Asia, between ... and ... Oceans. ...in the southern hemisphere.
- **Capital:** ...
- **Total area:** ... square kilometres.
- **Population:** ...people.
- **Native Australians:** ...
- **Principal towns:** ... Sydney, Melbourne, Brisbane.
- **World's famous sights:** ...
- **Principal industries:** ... wool, metals and mineral producer.
- **Head of State** ... Queen ... represented by ...
- **Animals:** ...
- **National emblems:** ...

**Thank you**