



Teacher's
Notes

THE SIMPSONS

Do you know who is
who?

the SIMPSONS



ABRAHAM



MONA



CLANCY



JACKIE



HERB



HOMER



MARGE



PATTY



SELMA



BART



LISA



MAGGIE



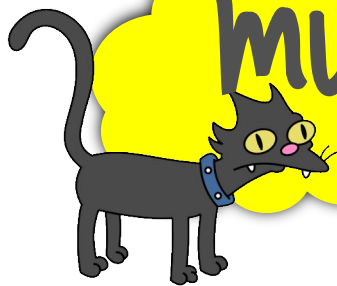
LING



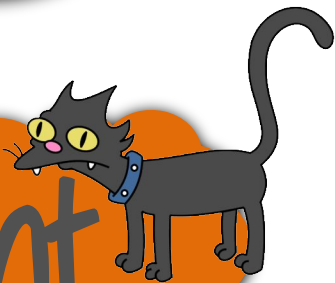
Maggie is Bart's ...



mum



aunt



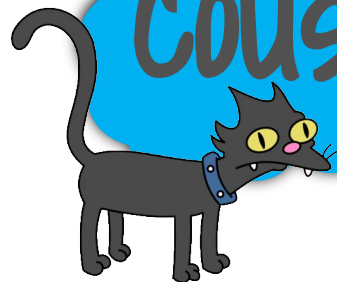
granny



brother



cousin



wife



sister



NEXT





Jacky is Lisa's ...



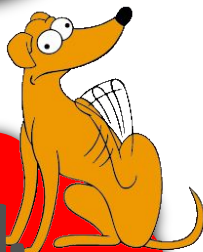
niece



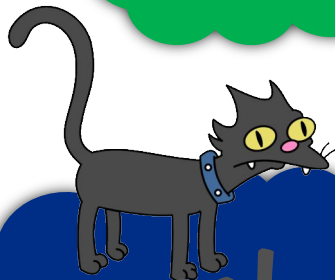
mum



grandma



aunt



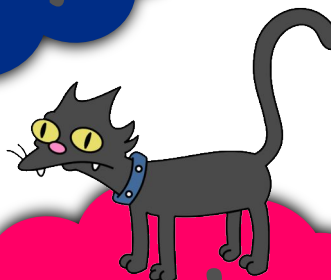
sister



dad



cousin

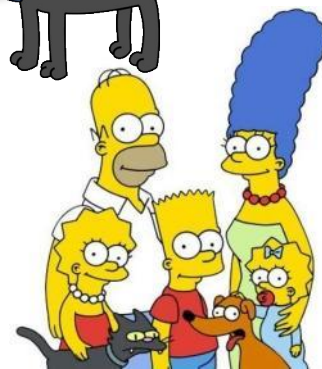


NEXT



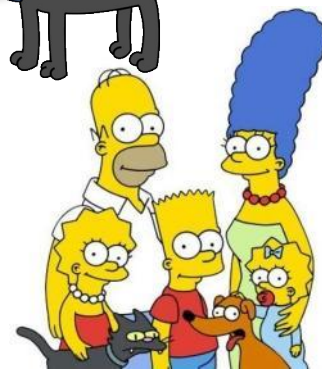
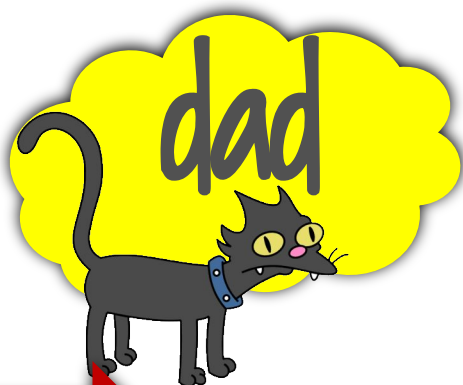
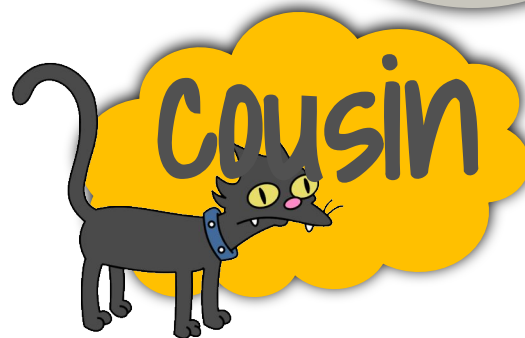


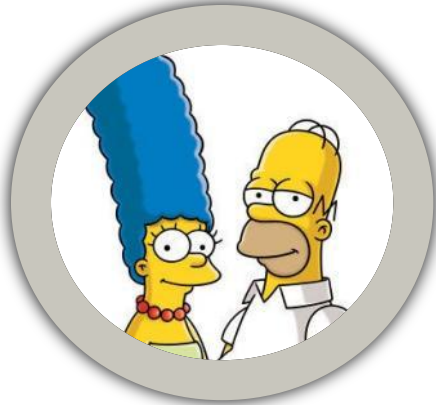
Clancy is Patty's ...





Herb is Homer's ...





Homer and Marge
are Bart's...



husband



parents

cousins



dads



mums



uncles



aunts



NEXT





Selma is Maggie's



granny



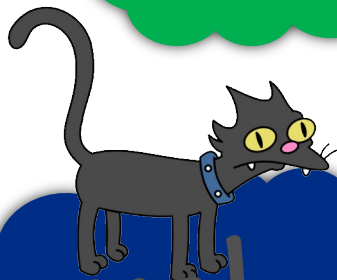
cousin



niece



uncle



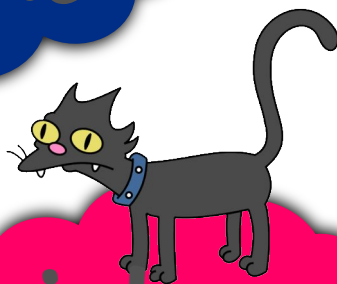
aunt



mum



sister



NEXT

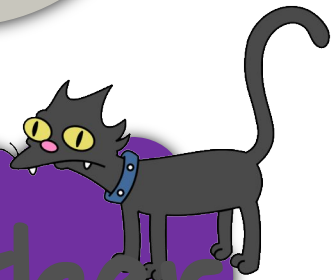




Homer is Ling's ...



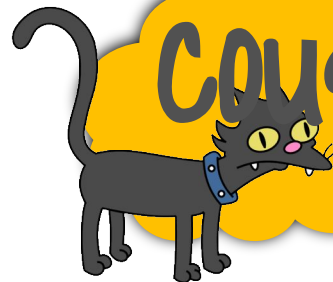
brother



aunt



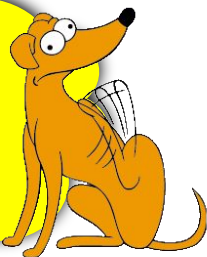
cousin



dad



uncle



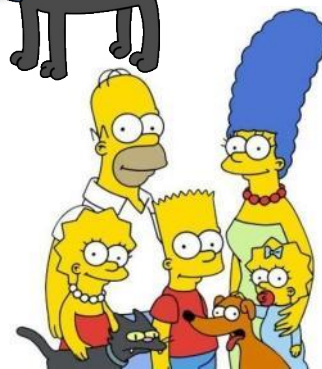
grandpa



son

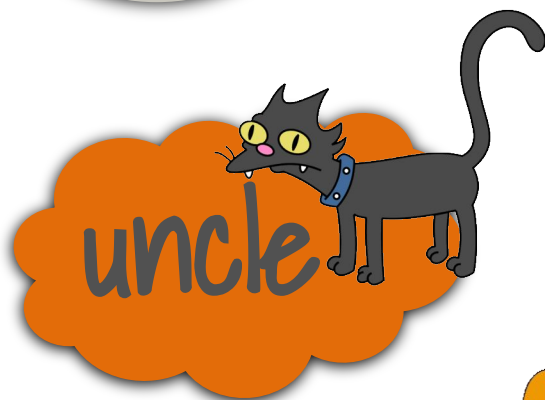


NEXT





Mona is Abraham's...

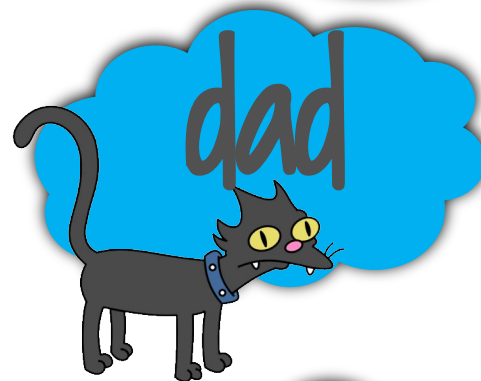




Bart is Mona's ...



nephew





Maggie is Ling's ..

