

Talking about ...

ENGLAND?



**These are
the British Isles**



Atlantic
Ocean

EUROPE

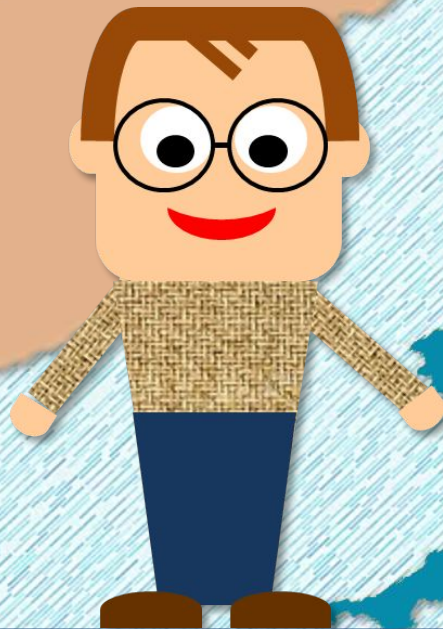


There are two big islands



This is Great Britain

It's the biggest
island of the
British Isles.



This is Ireland

It is also known as the **Emerald Isle** because of its beautiful green countryside.



There are two
independent states
in the British Isles:

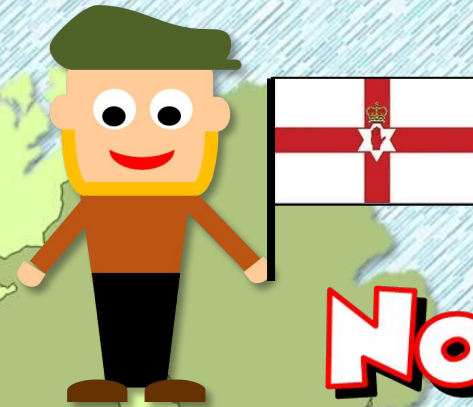


The United Kingdom

The 
Republic
of Ireland



Ireland is divided
into two parts:



Northern Ireland

It's part of the United
Kingdom.

It's also
called **EIRE**.



The Republic of Ireland

It's an independent
state since 1922.

This is the **United Kingdom**



Royal coat of arms

It is also called
the **UK** or **Britain**.
People from the
UK are **British**.



LONDON



The
**United
Kingdom**



**Northern
Ireland**



Scotland



Wales



England

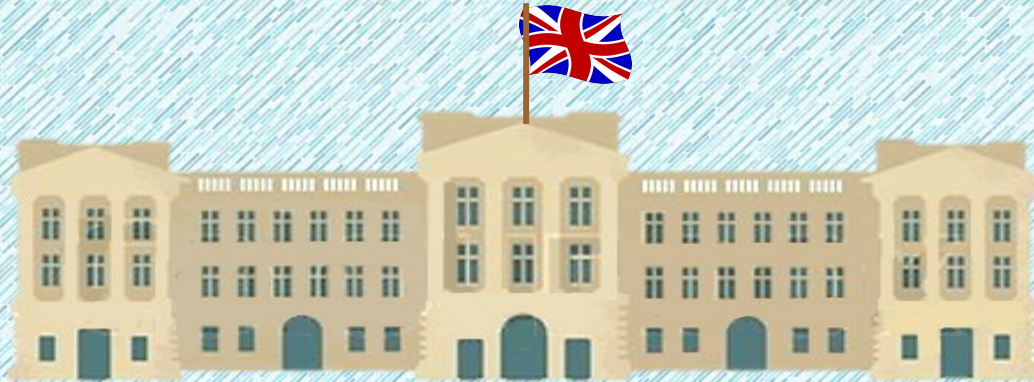
It consists
of four countries

The
**United
Kingdom**

It's a constitutional monarchy



Houses
of Parliament



Buckingham Palace





England



The rose,
symbol of England

I am **British** and
I am **English**

It's the biggest and the most populated
country of the United Kingdom



LONDON





Scotland

EDINBURGH



The thistle,
symbol of Scotland

I'm **Scottish** and
I'm a **British** citizen,
but I'm not English.





Wales



The daffodil,
symbol of Wales

I am **Welsh** and
I'm a **British**
citizen, but I'm
not English.



CARDIFF





Northern Ireland

BELFAST



The shamrock,
symbol of Ireland

I am **Northern Irish**
and I'm a **British**
citizen, but I'm not
English.



The Republic of Ireland

I am **Irish** but
I'm not British
or English.

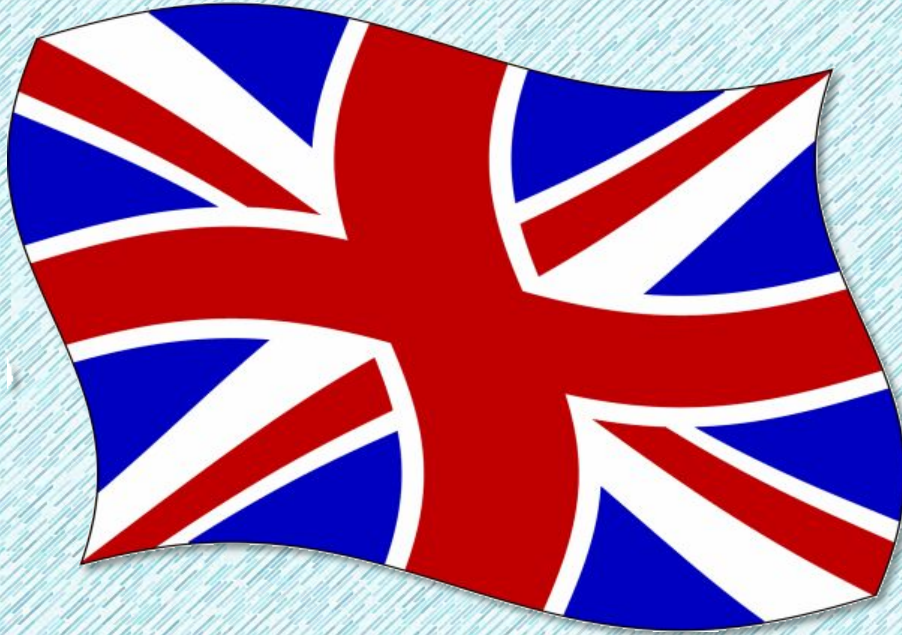


DUBLIN



The shamrock,
symbol of Ireland

The Union jack



This is not the
flag of England

This is the **“UNION JACK”**, the
flag of the **UNITED KINGDOM.**



The Union Jack

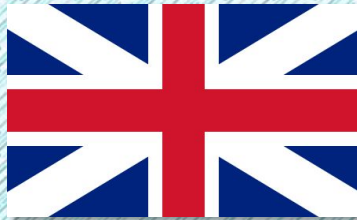


ENGLAND

+



SCOTLAND



UNION FLAG
(1606)

+



IRELAND



UNION JACK (1801)

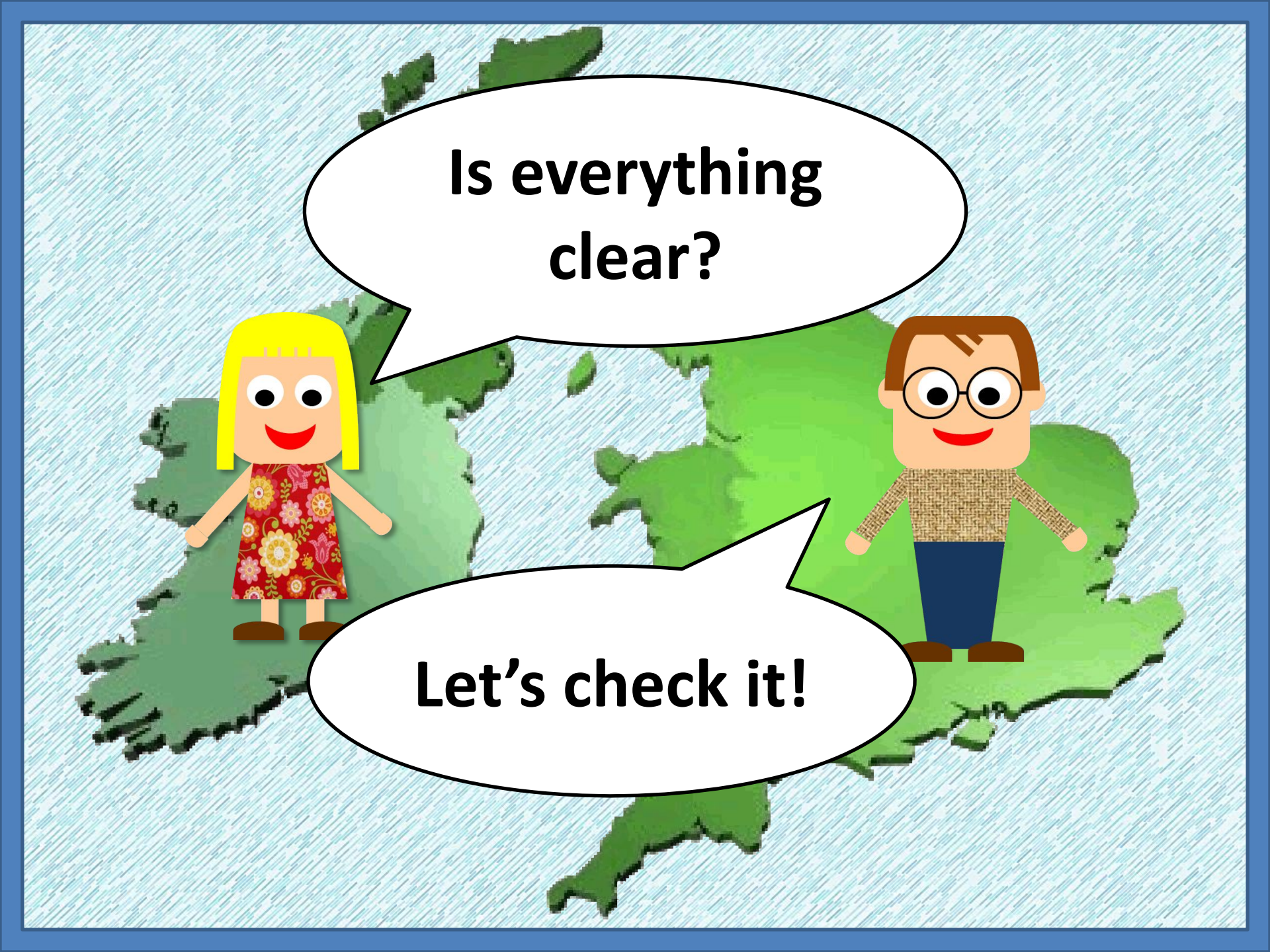
It's the
combination of
the flags of
England, Scotland
and Ireland



LONDON

London is the capital of **England** and the **United Kingdom**





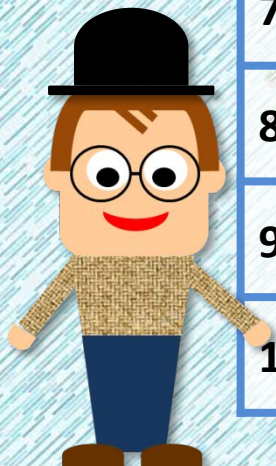
**Is everything
clear?**

Let's check it!

TRUE OR FALSE?

True False

1. England is the biggest island of the British Isles.	T	F
2. There are four countries in the United Kingdom.	T	F
3. All the people from the United Kingdom are English.	T	F
4. The Republic of Ireland is part of the UK.	T	F
5. Northern Ireland is an independent country.	T	F
6. People from Wales are English.	T	F
7. People from Scotland are British.	T	F
8. The “Union Jack” is the flag of England.	T	F
9. The British Isles and the UK are the same.	T	F
10. Britain is a republic.	T	F



GOODBYE!!

