

# British festivals





**Who is this and what is happening in this picture?**





**What is this person doing and why?**



What is this?





**When do British people sing this song?**

***Should auld acquaintance be forgot,  
and never brought to mind?***

***We take a cup of kindness yet  
For auld lang syne***

***For auld lang syne, my dear,  
for auld lang syne,  
we'll take a cup o' kindness yet,  
for auld lang syne.***





**At which British festival can you see this?**



**Connect the verbs on the left with the nouns on the right:**

- to put up
- to blow up
- to arrest
- to light
- to sign
- to celebrate
- to see
- to give
- a criminal
- a card
- a ghost
- a festival
- decorations
- a present
- a building
- a firework

- to put up decorations
- to blow up a building
- to arrest a criminal
- to light a firework
- to sign a card
- to celebrate a festival
- to see a ghost
- to give a present



## Match the festivals to the date:

Guy Fawkes' Night

Pancake Day

Halloween

St. Valentine's Day

*31<sup>st</sup> October*

*14<sup>th</sup> February*

*Some time in February*

*5<sup>th</sup> November*



**Make notes in the table.**

Festival	What do people do?
Guy Fawkes' Night	
Pancake Day	
St. Valentine's Day	
Halloween	<i>People often make parties.</i>

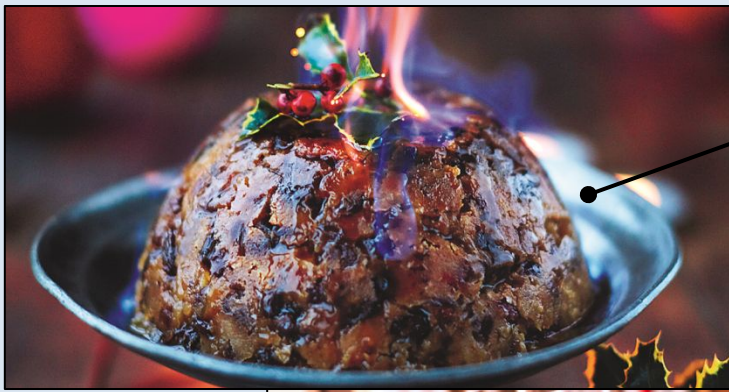


What present do Mrs. Robinson and Mr. Robinson get?

- Complete the sentences:

- a. The important festivals are\_\_\_\_\_
- b. People put up\_\_\_\_\_
- c. They keep their present under\_\_\_\_\_
- d. They spend Christmas with\_\_\_\_\_
- e. They give\_\_\_\_\_





**Christmas pudding**

**roast potatoes**

**peas**

**wine**

**stuffing**



**roast turkey**

**Brussel sprouts**

## Answer the questions:

- Where do people go with their family?
- What do you find in a cracker?
- What do you sometimes find in a pudding? Why?



**Answer the question:**

**What is the last festival of the year?**

**What do Scottish people call it?**

**What do people do?**

**Where is there a really big party?**





## Discuss the following questions:

- Which festival do you celebrate?

*Pancake Day*

*Easter*

*St. Valentine's Day*

*Christmas*

*Halloween*

*New Year*

- What do you do differently from the British?
- What do you do differently from other people in your class?
- What other festivals do you celebrate?
- Do you wear special clothes or eat special food at these festivals?
- When do you give people presents?
- Who do you give presents to?



# May Day





The first of May, May Day, is not a big festival for most of Britain. But for the students and the people of Oxford it is an important celebration.

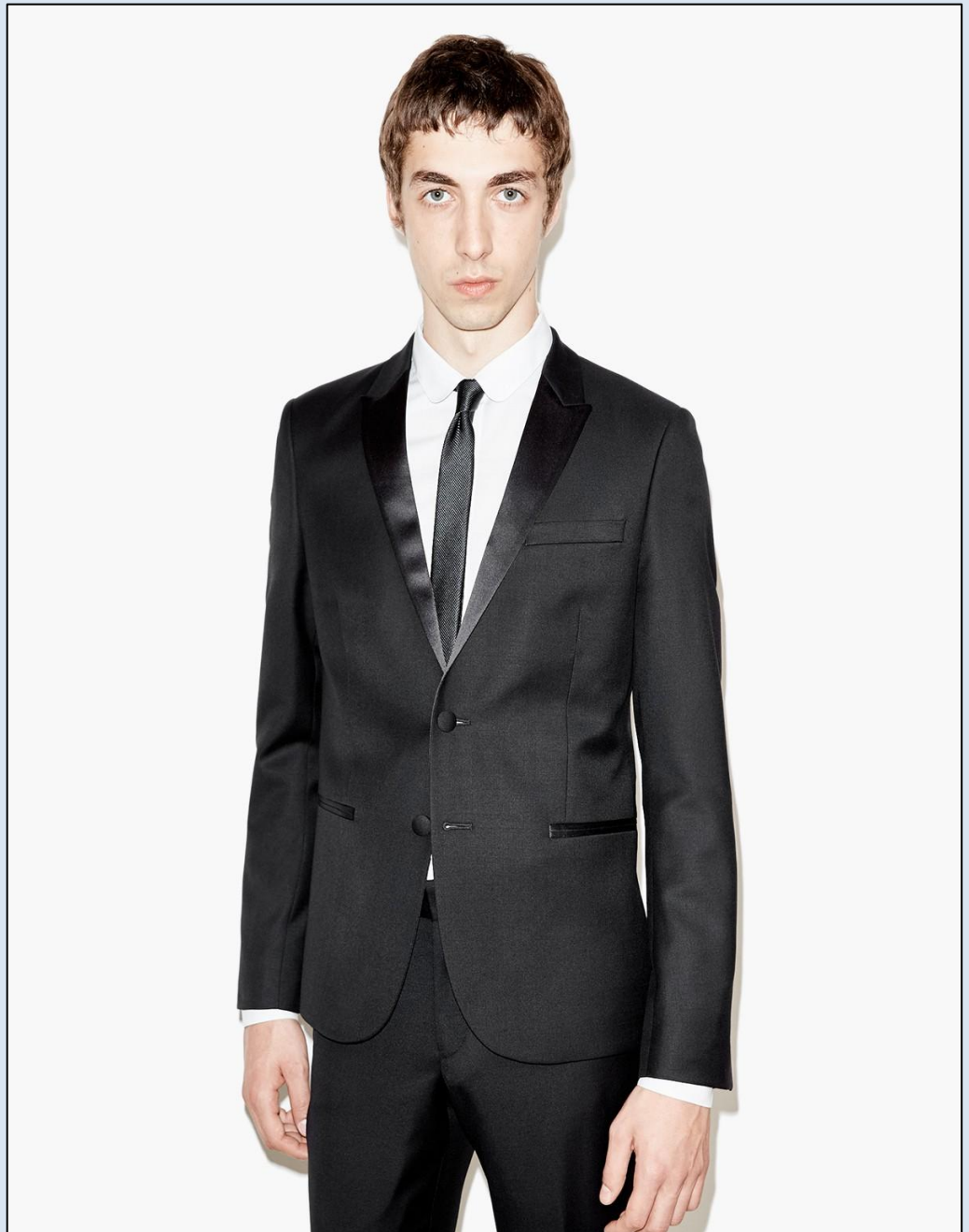




**Pubs and cafes open early all over the city. The festival goers are hungry and need some breakfast.**



**Many people, especially the students, stay up all night at parties before the celebrations. They often dress up in smart clothes – such as dinner jackets – for these parties.**





The focus of the celebration is the tower of Magdalen College at six o'clock in the morning. The college choir stands at the top of the tower and sings a hymn to spring.





There are other celebration all around the city. Groups of morris dancers perform traditional English dances in the streets.





**Some students celebrate in more unusual ways. They are not always popular with the police.**

