




# *Game*



***Who knows  
London better ?***


$$a^2 + b^2 = c^2$$

- How old is London ?

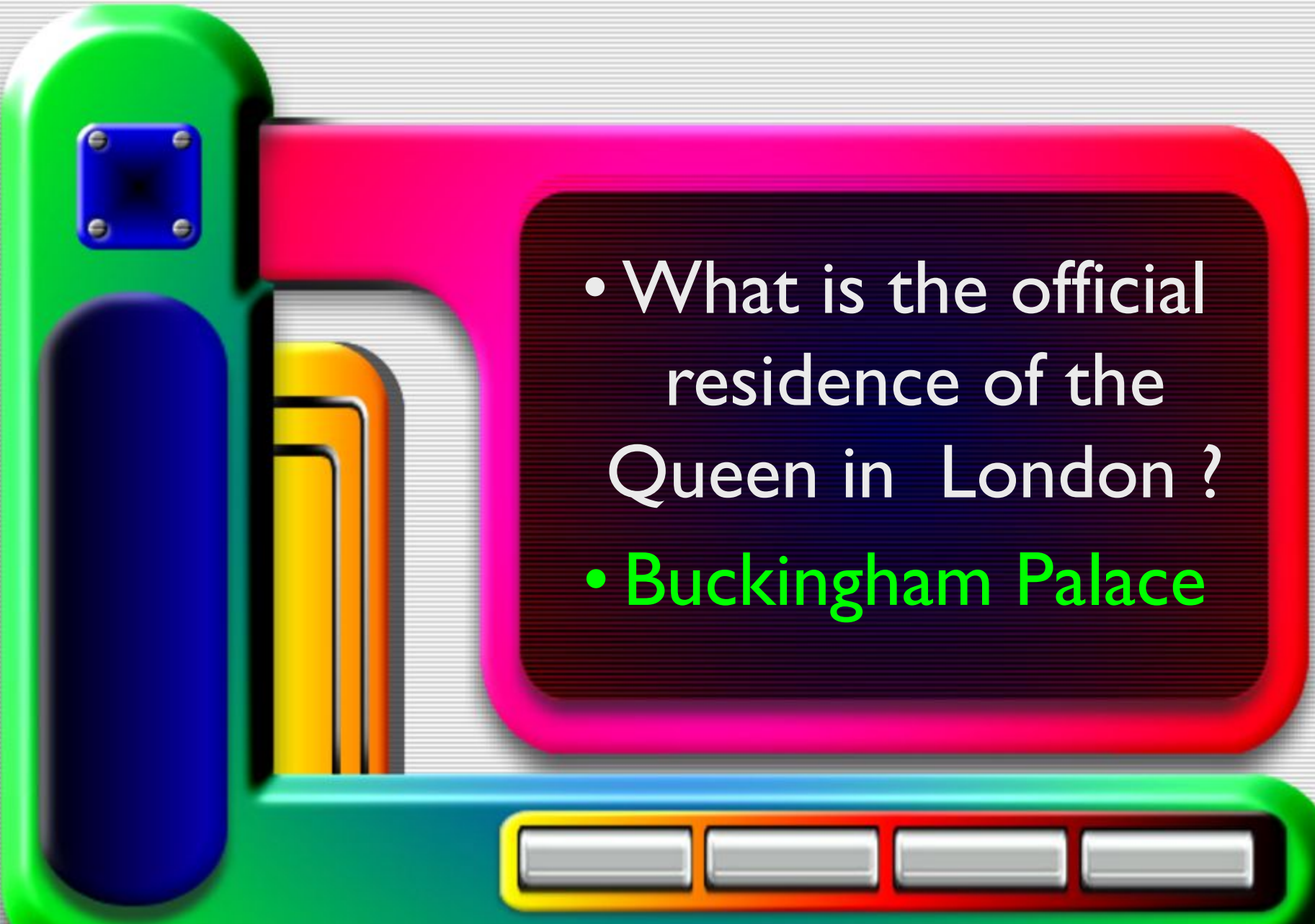
2000

500

1000

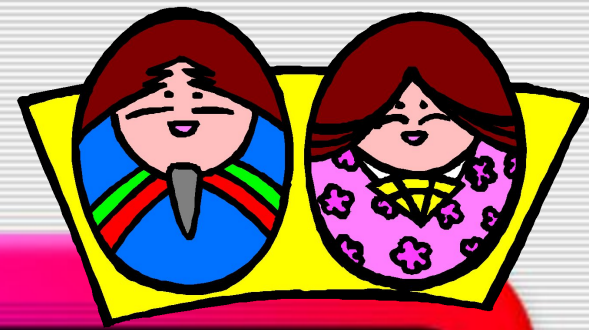
2000

3500

- 
- What is the official residence of the Queen in London ?
  - Buckingham Palace





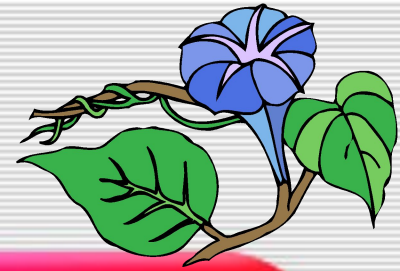


- Where is the tomb of Sir Christopher Wren situated?
- In St. Paul's Cathedral



- In which cathedral there is a Whispering Gallery?
- In St. Paul's cathedral





- Wax life-size figures of world-famous celebrities are in ...
  - Madam Tussaud Museum





# Victoria and Albert Museum



- Which museum was founded in 1852 and contains collections of decorative art, sculpture, textile, dress, ceramics, glass and others.





- Silver and jewelery from European and non-western cultures are in ...

- Victoria and Albert Museum



Quilts 1700-2010

VICTORIA AND ALBERT MUSEUM

# The National Gallery



- It is an art museum which is in Trafalgar square. Founded in 1824, it houses a collection of over 2,300 paintings dating from the mid-13th century to 1900.



# The British Museum



- What museum was founded in 1753 and has 11 major departments in which you can see ancient things from different countries and mummies.



# Westminster Abbey



- It is a famous Royal church with a coronation chair. You can see tombs of famous British people there.

# *Westminster Abbey*





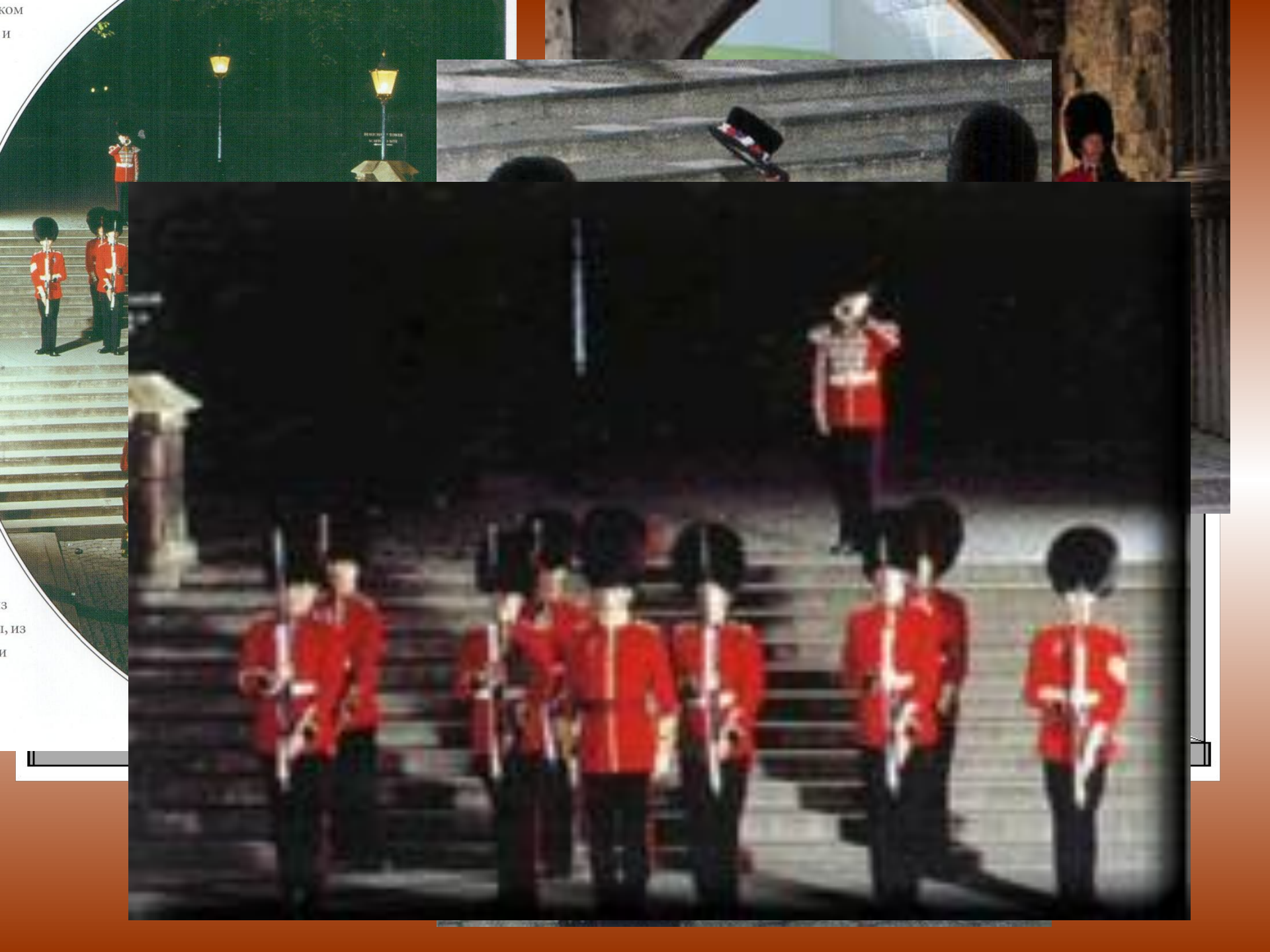
- The changing of guard happens every day at 11.30 in ...
- Buckingham Palace



2009/07/08



- ❑ Where does Key ceremony take place at ten p.m. every day ?
- ❑ In the Tower of London





- British Parliament sits here and all laws of the UK are made here.
- Westminster Palace
- The Houses of Parliament







- Real Queen's home  
is ...

- Windsor Castle



# Sherlock Holmes Museum



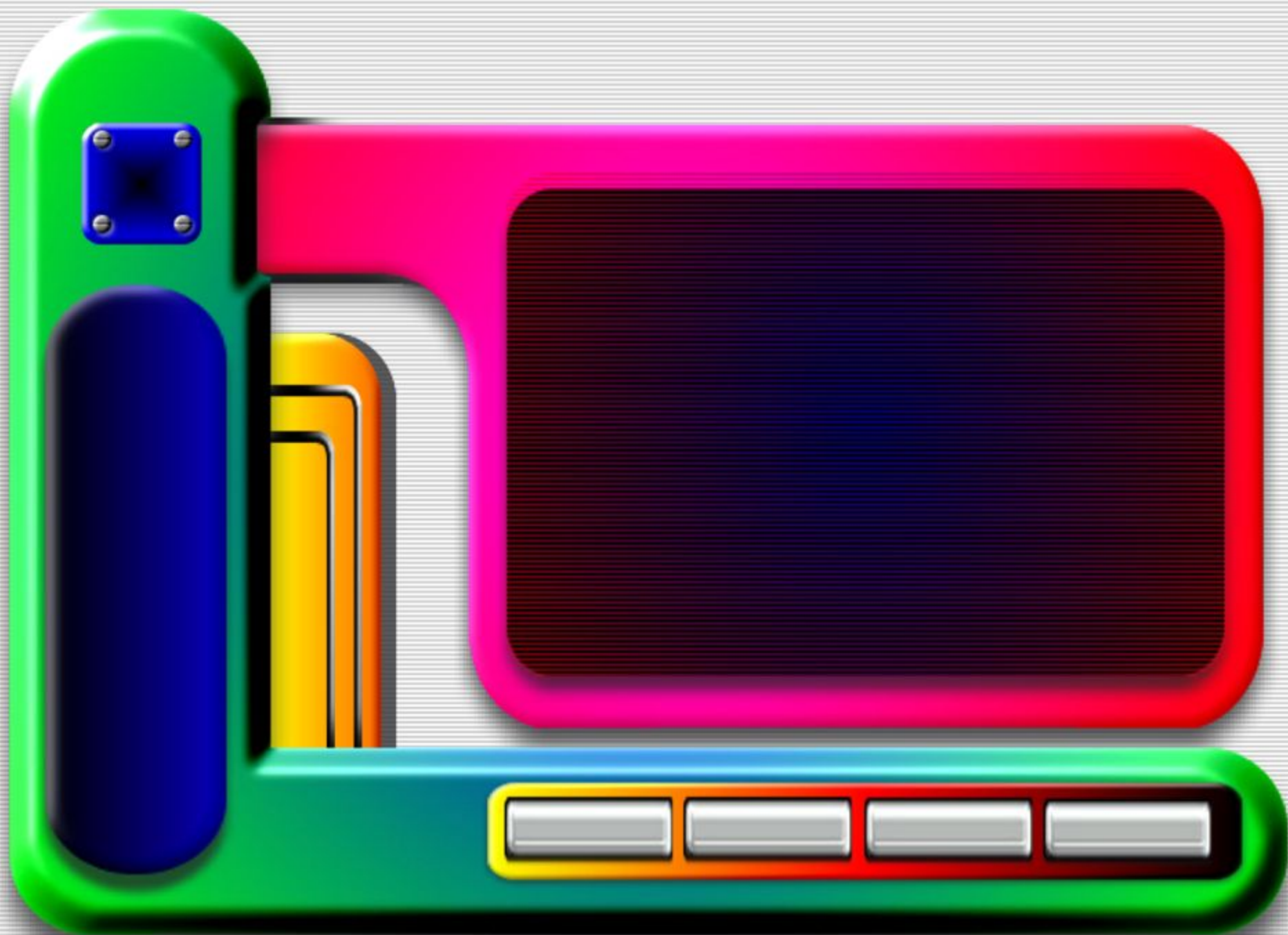
- This museum is in 221 B Baker street. It contains a representation of the fictional detective's apartment.

SHERLOCK HOLMES

CONSULTING  
DETECTIVE

221b Baker Street







- Where is London's Zoo and beautiful rose gardens?
- In Regent's park

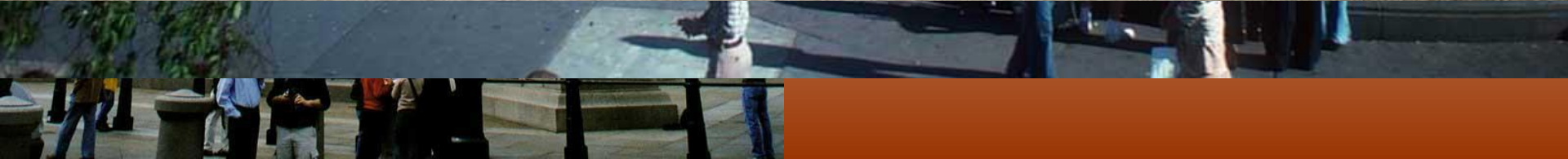


FunCow.ru





- . Where can you see Nelson statue which is 55 m high.
- In Trafalgar square?



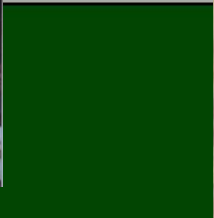
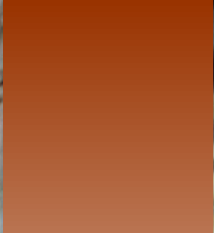


- What was a castle, a palace, a prison, a royal zoo, a mint and it is a museum now.
- The Tower of London



СВОИ ЛЮДИ

[WWW.SVOILUDI.RU](http://WWW.SVOILUDI.RU)



# The London Eye



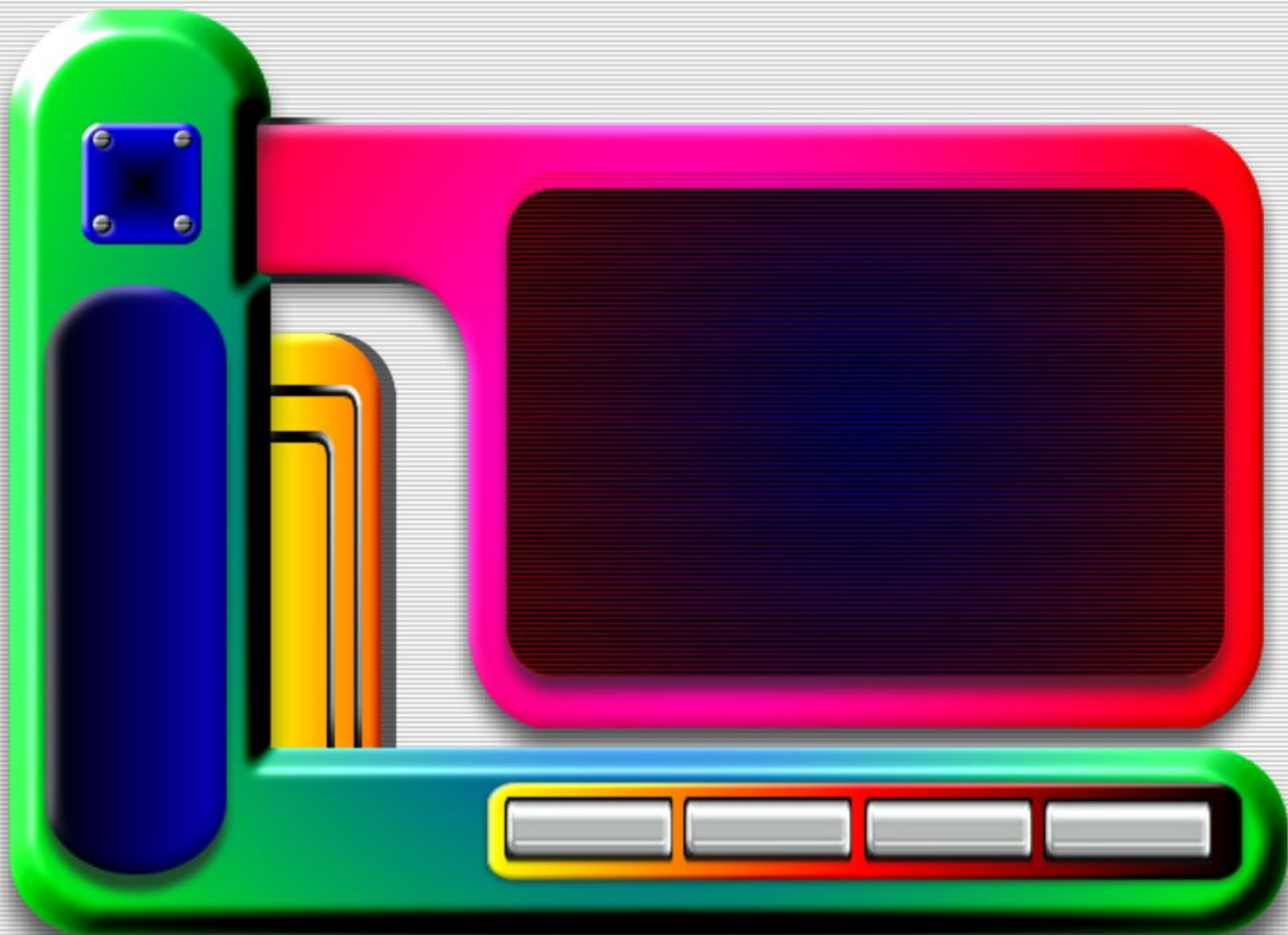
- It is a new attraction in London. It's the world's tallest wheel, which at 137 m offers good views from its enclosed capsules.





- Which bridge is near the Tower of London and it is very beautiful ?
- Tower Bridge







- Where can you see all stars and planets of our galaxy ? It is at Madam Tussaud.
- In Planetarium





# Albert Memorial



- It was built in honour of Queen Victoria's husband, whom she loved very much. Besides this man did a lot for the development of culture in England.



# Cucumber

- The name of which building is common with the name of a vegetable and was built in 2005.



# Piccadilly Circus


- This place is the centre of entertainment. It is a famous square which is a meeting point of six streets. It is called “circus” because of its shape.



Microsoft  
Virtual Earth™

50 yds

© 2006 Microsoft Corporation © 2006 Blom

- 
- In the middle of this square there is a graceful statue of Eros. It is beautiful with lots of advertisements.
  - Piccadilly Circus



FreeFoto.com

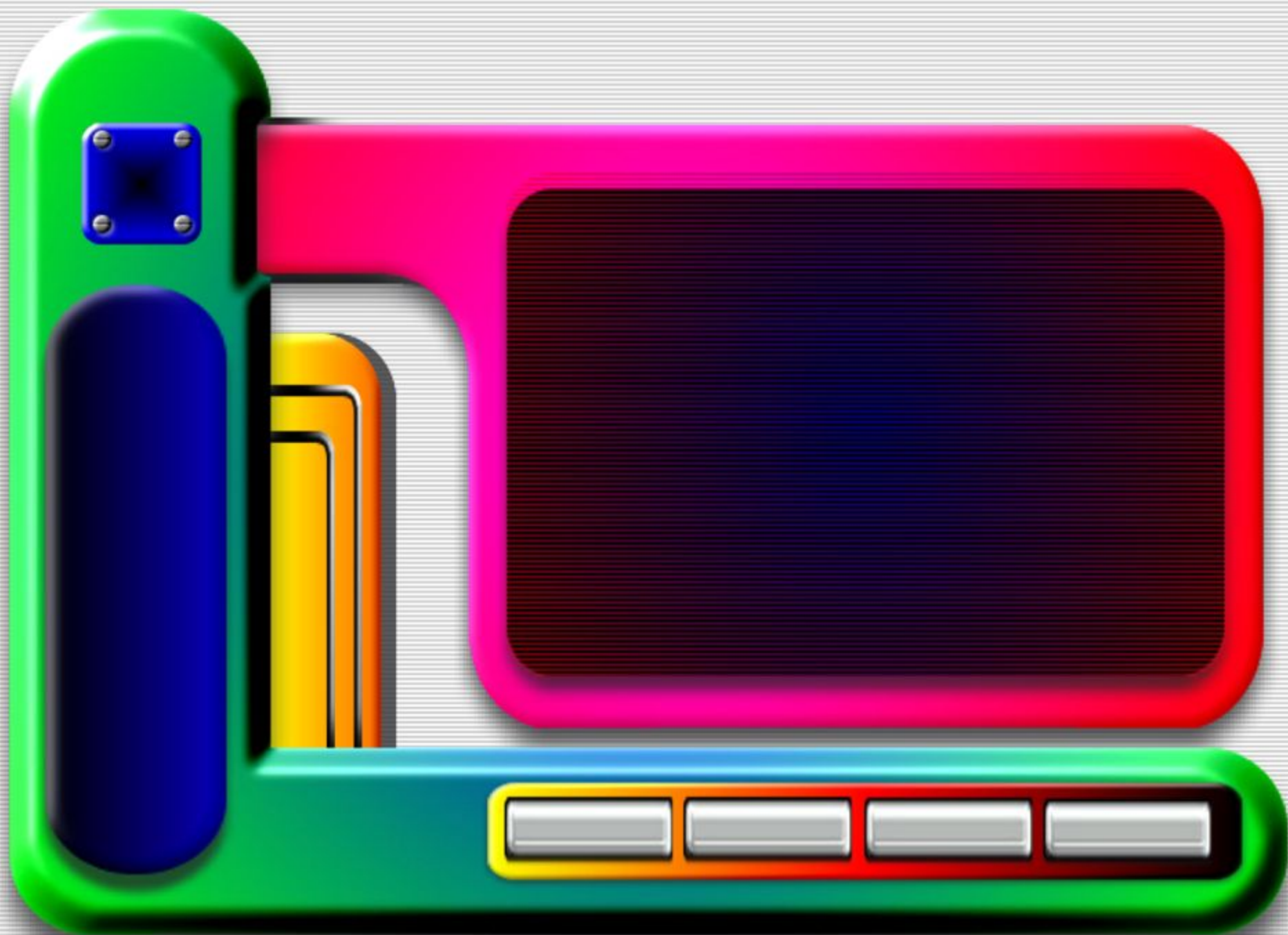




# A Marble Arch

- It was built to commemorate Lord Wellington's victory over Napoleon in the battle of Waterloo. It is the gateway to Hyde Park.









СВОИ ЛЮДИ  
[WWW.SVOILUDI.RU](http://WWW.SVOILUDI.RU)

