

# ***ANIMALS IN OUR LIFE***



# A song

- The **crocodile** has shiny teeth that crunch,
  - crunch, crunch.
- He keeps them clean and beautiful
  - And absolutely suitable
- For eating up a crocodile's lunch, lunch, lunch
  - 
  - Chorus
- The **shark** and the **tiger** and the crocodile,
  - They never, never lose their smile.
- The shark and the tiger and the crocodile,
  - They never, never lose their smile.
  -
- The white shark's teeth are sharpest in the sea,
  - sea, sea.
- He keeps them clean and beautiful
  - And absolutely suitable
- For eating little **fishes** at tea, tea.
  - 
  - Chorus
  -
- The tiger has enormous teeth that bite,
  - bite, bite.
- He keeps them clean and beautiful
  - And absolutely suitable
- For eating up his supper at night, night, night.
  - 
  - Chorus
  -

# ANIMALS

```
graph TD; A([ANIMALS]) --> B([wild]); A --> C([domestic]); A --> D([endangered]);
```

wild

domestic

endangered



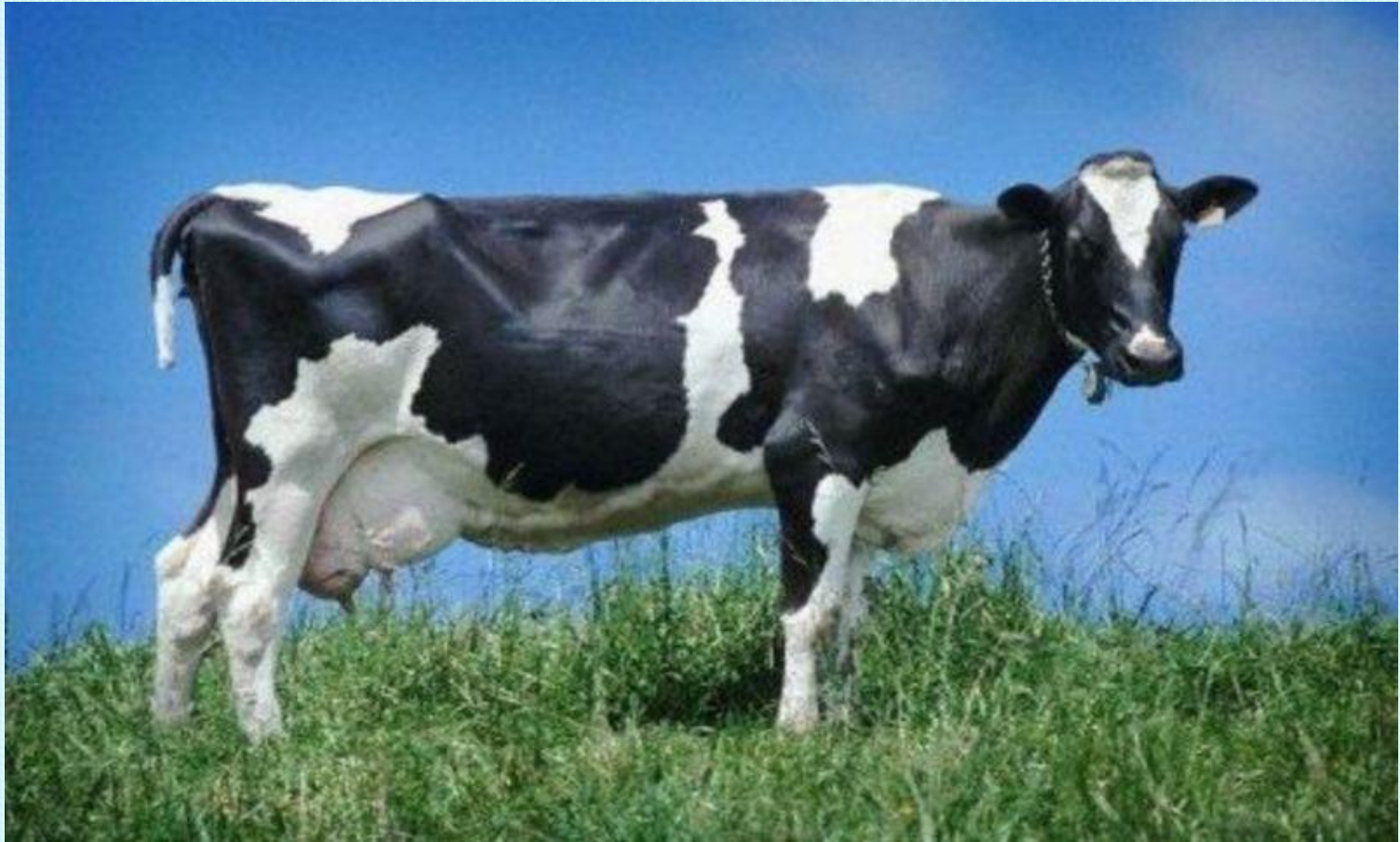
The image features three large, 3D question marks. One is red and positioned in the center, slightly behind the other two. The other two are green, one to the left and one to the right of the red one. Overlaid on these question marks is the text "GUESS THE RIDDLE" in a bold, black, italicized sans-serif font. The text is arranged in two lines: "GUESS THE" on the top line and "RIDDLE" on the bottom line. The background is white with light blue wavy lines at the top.

***GUESS THE  
RIDDLE***

This animal is full of fun: jumping, chasing and chattering. What is this animal?



This is a domestic animal. It's rather big. It has horns on its head. It gives milk. What is it?

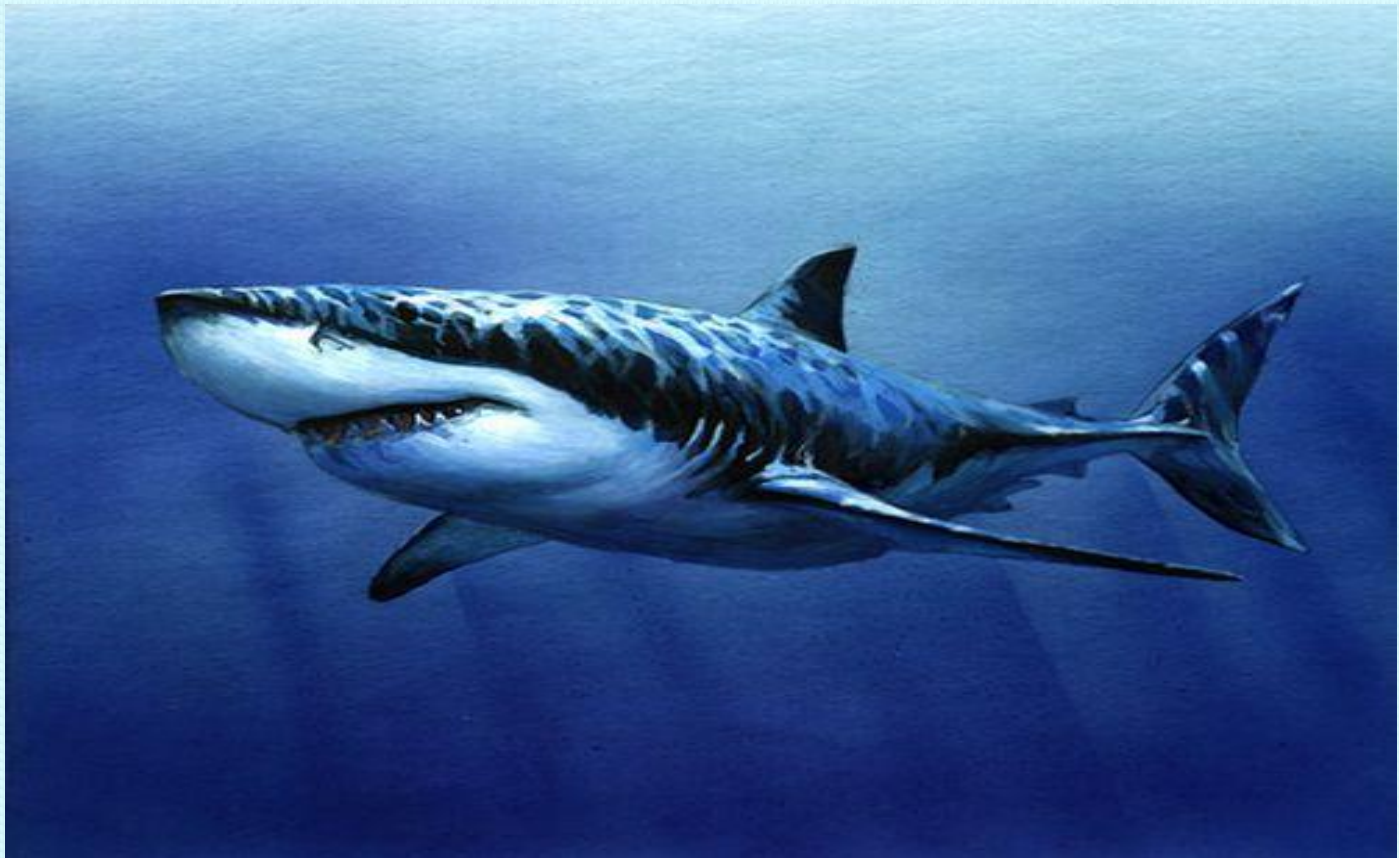




This animal lives in dessert. It can survive without any water for a long time. It helps people to carry heavy things. What is it?

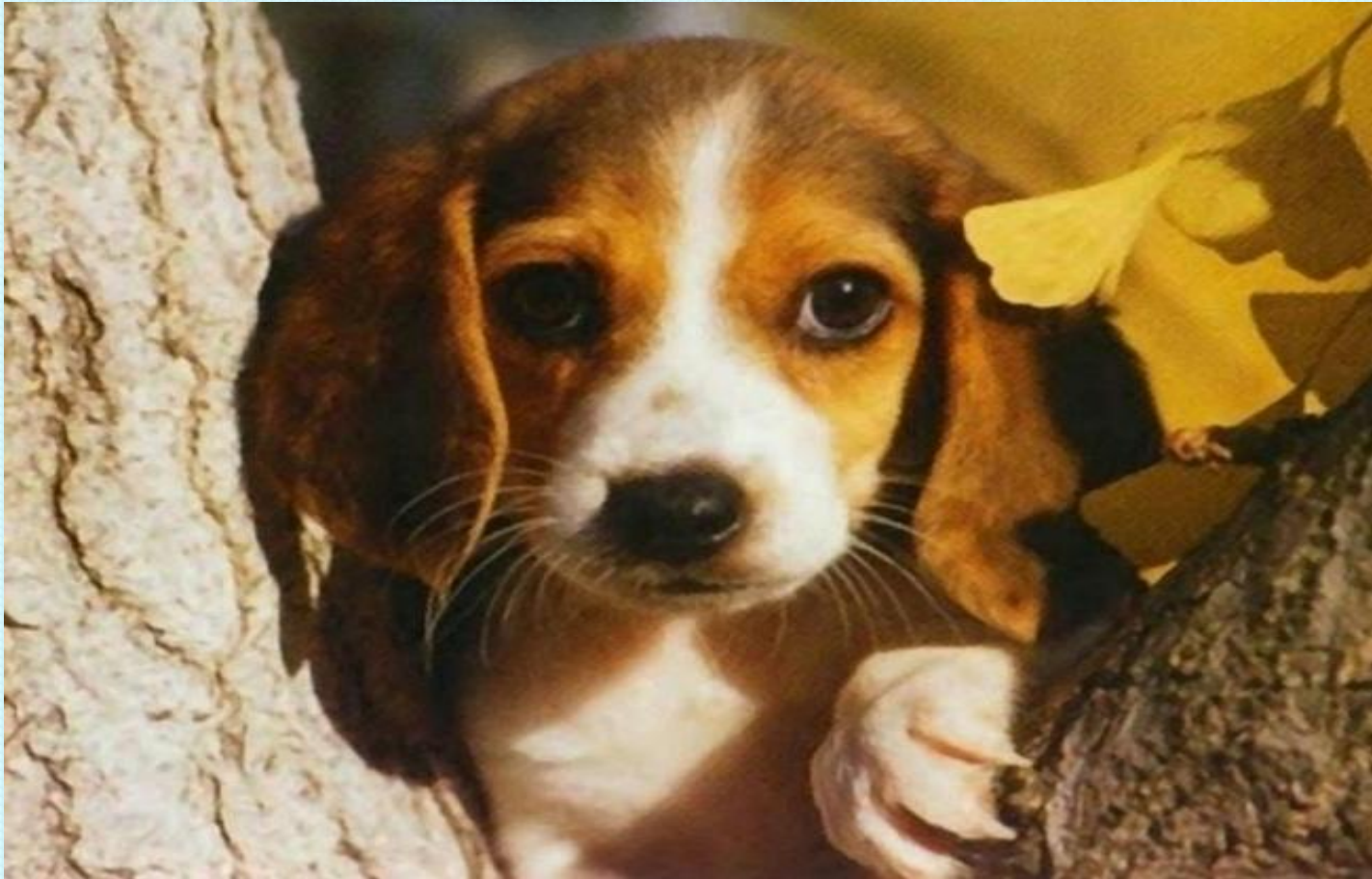


This creature is dangerous! It lives in the oceans and seas. It is always hungry! What is it?





This pet is a dedicated friend to people. It can be different types. What is it?



The huge body of this animal is grey. Its long trunk helps take food. What is it?





This reptile has a long body. It can be angry if you disturb it. It can even bite you! It's often poisoned. What is it?





This bird is big and strong. When it stretches its wings it becomes one meter long. This bird hunts mice and rabbits. What is it?



# ***MY FAVOURITE ANIMAL***

- *What is it?*
- *How does it look like?*
- *Where does it live?*
- *What does it like to eat?*
- *What does it like to do?*
- *Is it dangerous for people?*



*IT'S HIGH TIME TO  
HAVE A*

...

*BREAK*



# LONDON ZOO



# OUR VOCABULARY

- 1. exotic animals [ɪg'zɒt.ɪk 'æn.ɪ.məls] – экзотические животные
- 2. the thirteenth century [ðə θɜ:'ti:nθ 'sentʃəri] – 13-ый век
- 3. King Henry III [kɪŋ 'hen.rɪ ðə θɜ:'d] – король Генри III
- 4. a gift [eɪ ɡɪft] – подарок
- 5. a special place [eɪ 'speʃl pleɪs] – особое место
- 6. the king of Norway [ðə kɪŋ əv 'nɔ:rweɪ] – король Норвегии
- 7. a polar bear [eɪ 'pəʊ.lər beə(r)] – полярный медведь
- 8. a long rope [eɪ lɒŋ rəʊp] – длинная веревка
- 9. Queen Charlotte [kwi:n 'ʃa:lət] – королева Шарлотта
- 10. an attraction [ən ə'trækʃn] – привлекательность
- 11. to give birth [tə ɡɪv bɜ:θ] – давать жизнь
- 12. a thousand [eɪ 'θaʊznd] – тысяча
- 13. a hundred [eɪ 'hʌndrəd] – сотня
- 14. curious people ['kjʊəriəs 'pi:pl] – любопытные люди

# ***HOMework***

Ex. 5, p. 119  
(Student's book)



***Thank you for the lesson!***  
***Good-bye!***

