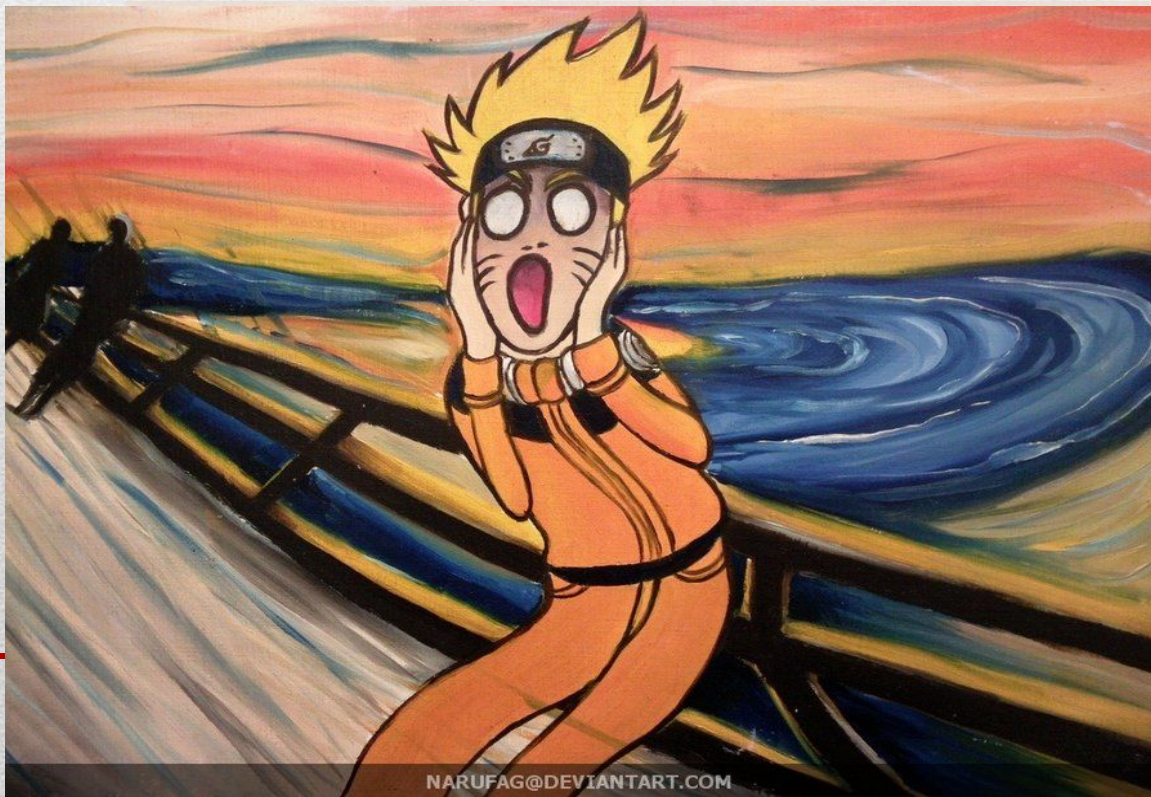
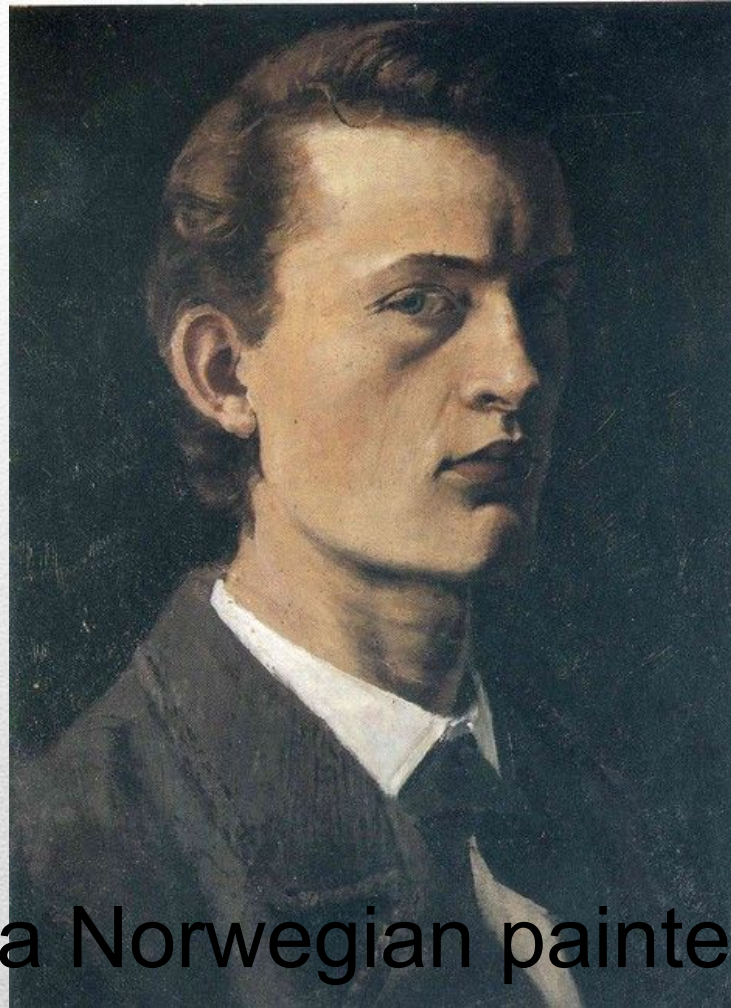
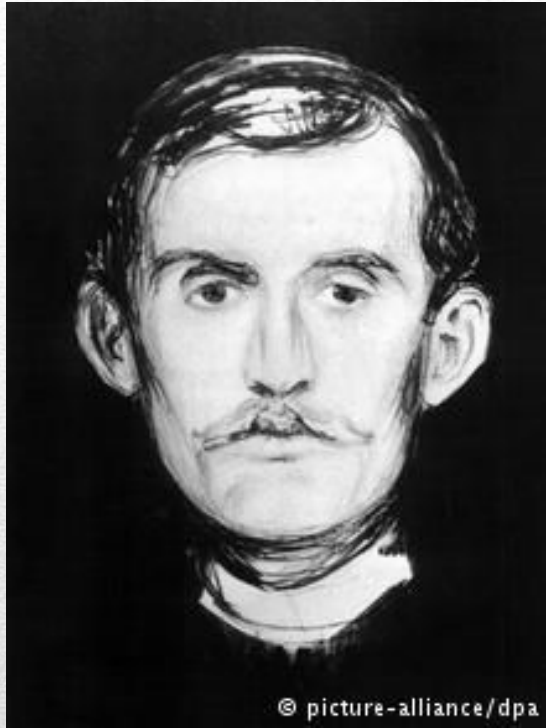


# Edward Munch

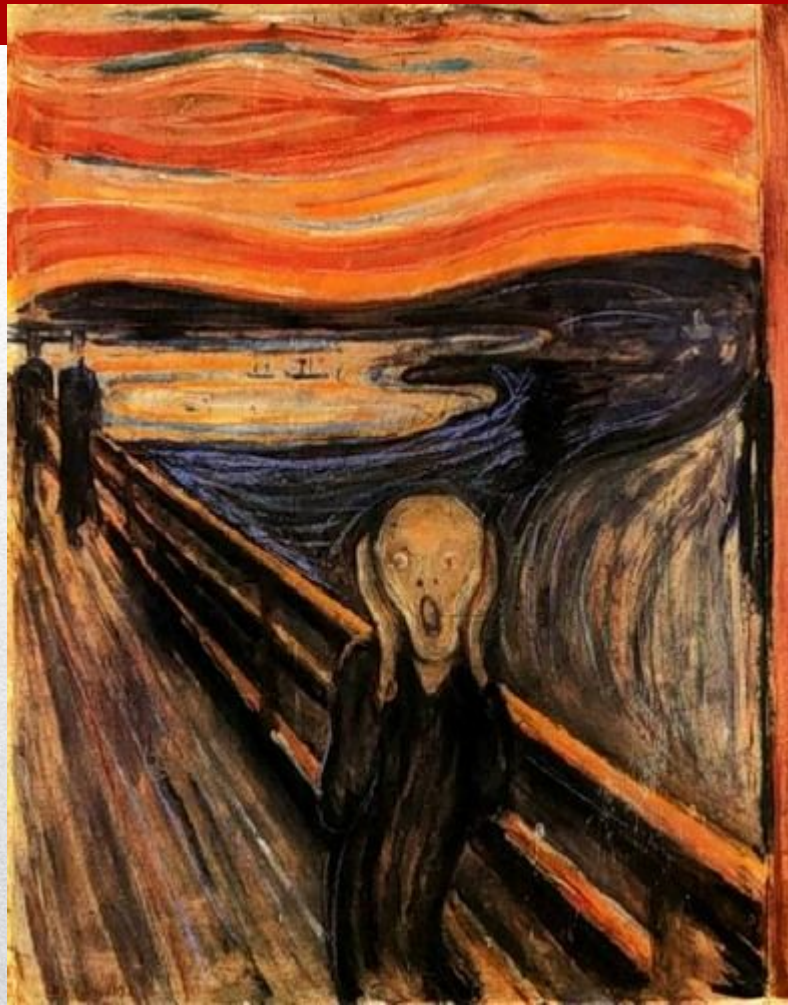
## «Scream»

Dorzhieva Albina, 11 “V”





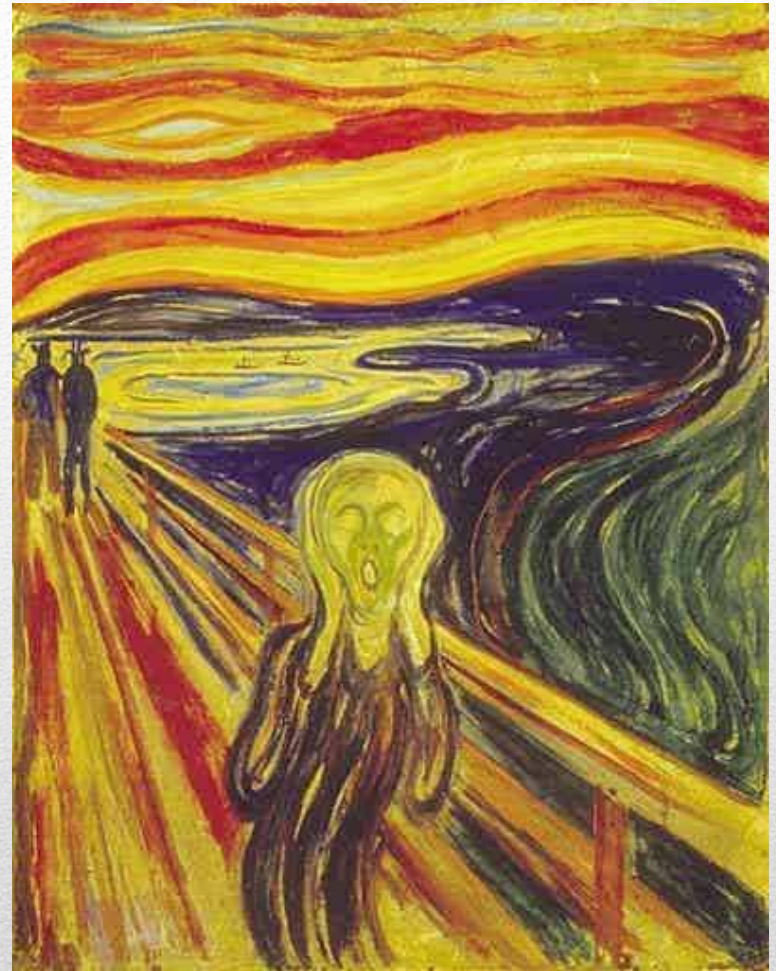
Edward Munch- is a Norwegian painter and graphic artist, theater artist, art theorist. One of the first representatives of expressionism.



- "Scream" - a series of paintings created between the years 1893 and 1910, depicting a desperate figure against the background of a blood-red sky

The landscape on the background is a view of the Oslo-Fjord from the Ekeberg hill, in the city of Oslo,





Munch created several versions of "Scream", namely 4, using different techniques

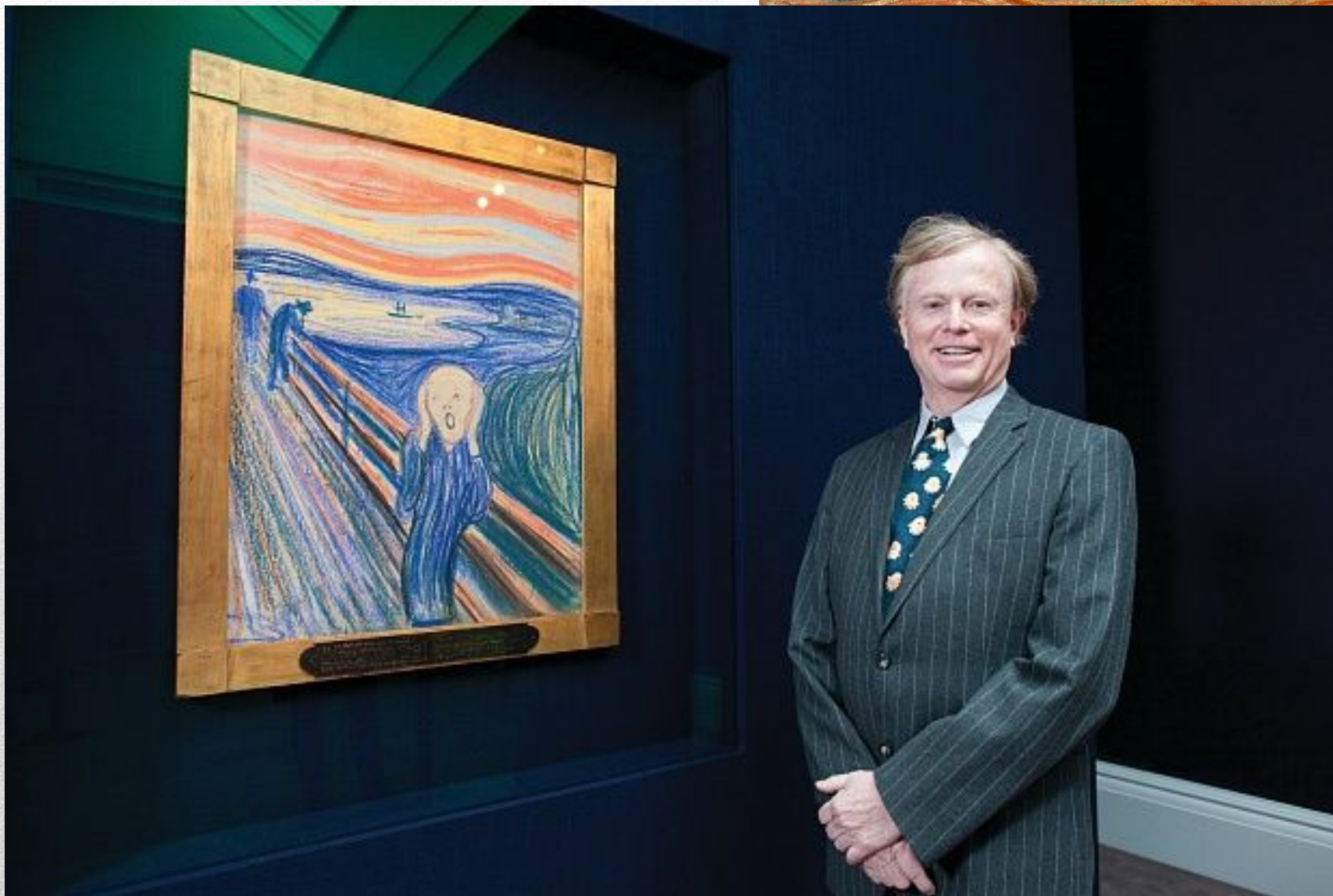
---

In the Munch Museum, one of two variants, made with oil, is presented, and one pastel. The Norwegian National Museum of Art, Architecture and Design contains in its gallery a second version, made with oil



---

pastel

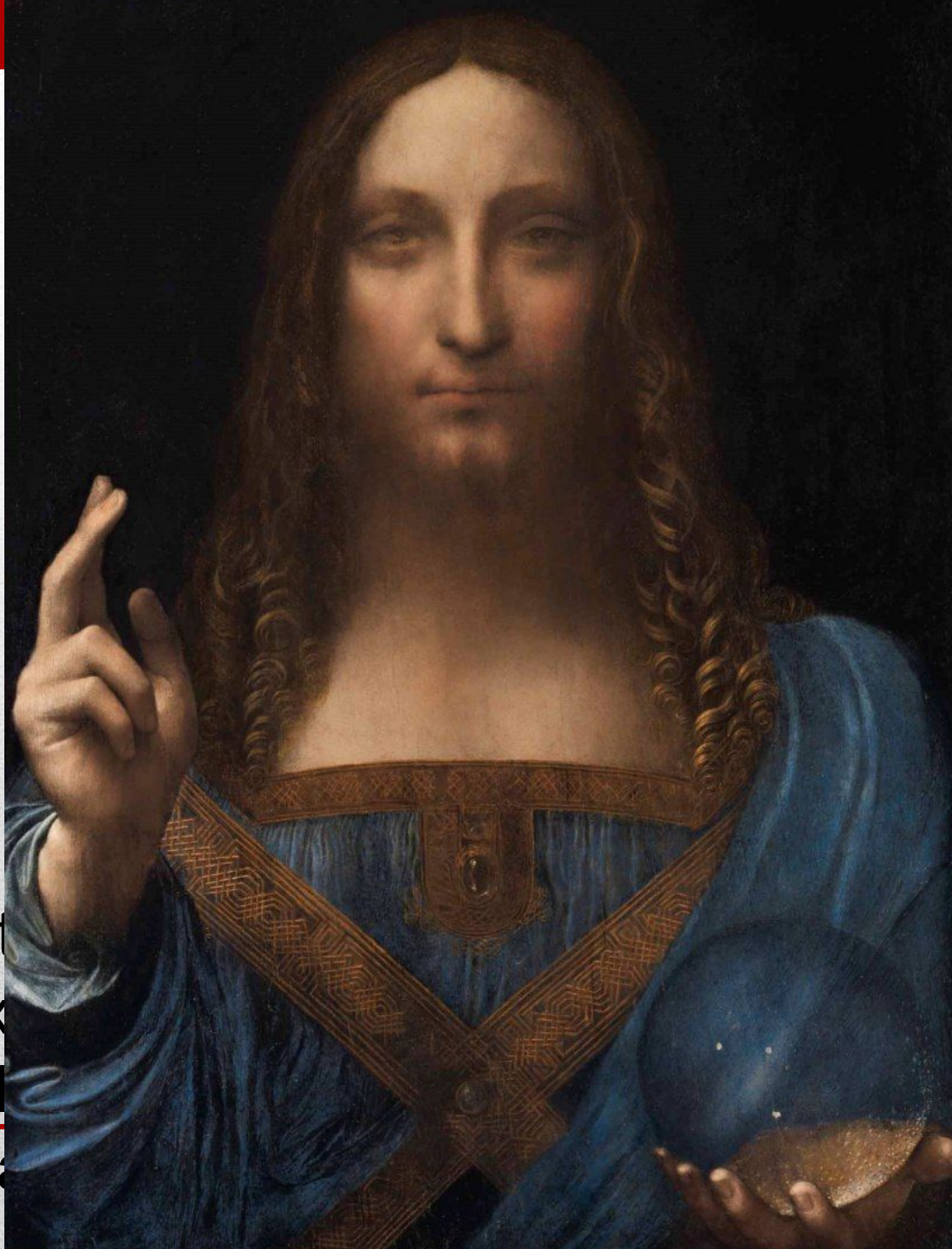


The scream became the target of several thefts. In 1994, the picture was stolen from the national gallery. A few months later it was returned to its place.



The original name in German, Munch's picture was "Scream Nature".





The picture is one of the most expensive in the world, having sold for \$450 million in 2017. It is the only painting by Leonardo da Vinci that is believed to be an authentic work of his.

It is among the most expensive paintings in the world, having sold for \$450 million in 2017. It is the only painting by Leonardo da Vinci that is believed to be an authentic work of his.

The reddish sky, perhaps, was caused by the eruption of the volcano Krakatau in 1883. Volcanic ash painted the sky in a reddish color in the eastern United States, Europe and Asia from November 1883 to February 1884.





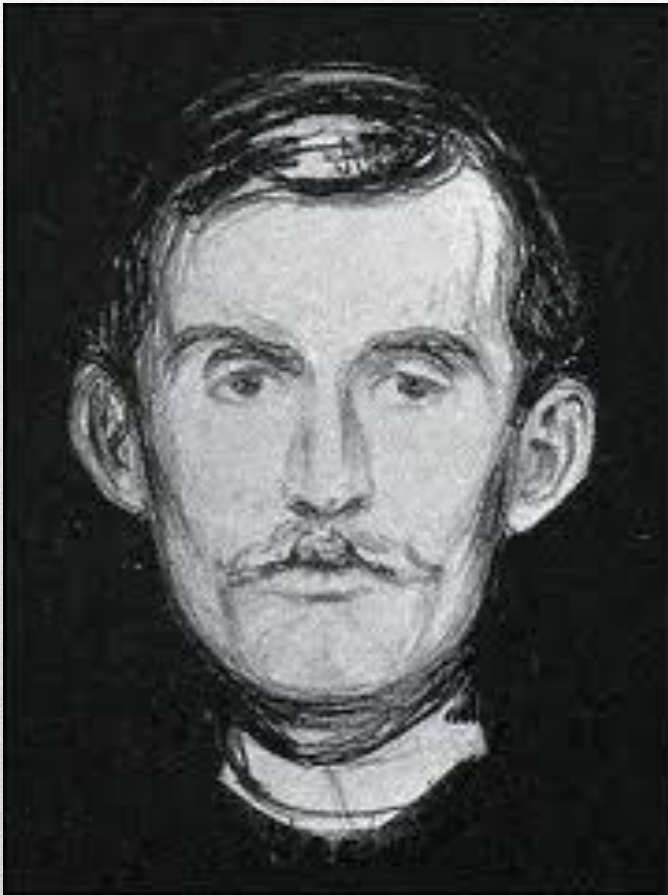
The figure in the foreground probably depicts the artist himself, not screaming, but, on the contrary, defending himself against the scream of nature. In this sense, the posture in which he portrays himself can be a reflex response of a person trying to escape from strong noise, real or fictitious.

---

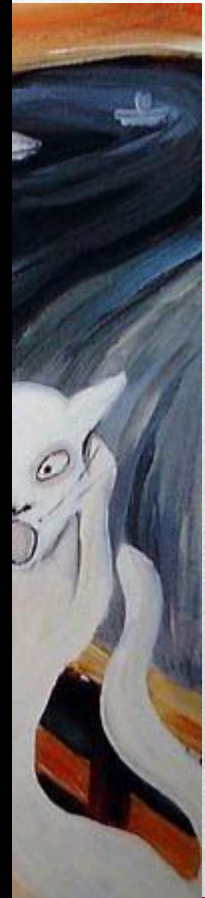
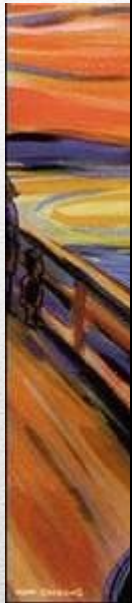
In 1978, a famous connoisseur of Munch's work, Robert Rosenblum expressed the opinion that the unusual, asexual creature in the foreground was most likely inspired by the Peruvian mummy that Munch might have seen at the World Exhibition in Paris in 1889.



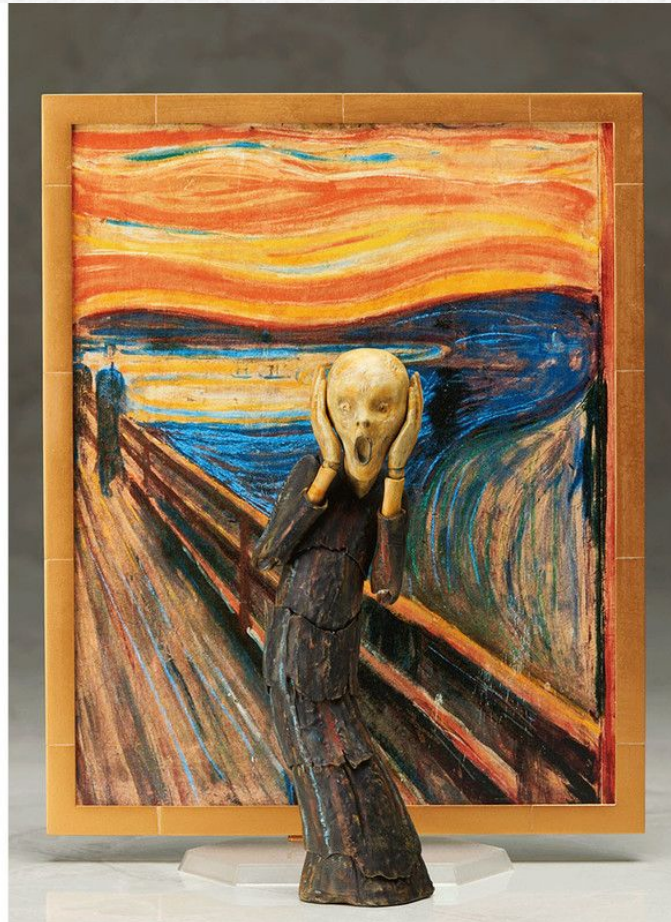
There is also a version that this picture is partly a fetus of a mental disorder; in fact, there is evidence that the artist suffered from manic-depressive psychosis.



SO



The Japanese firm Good Smile, which makes figurines on cartoons, began production of figures based on the picture "Scream" by Edward Munch.



Thank you for your attention!!!

