



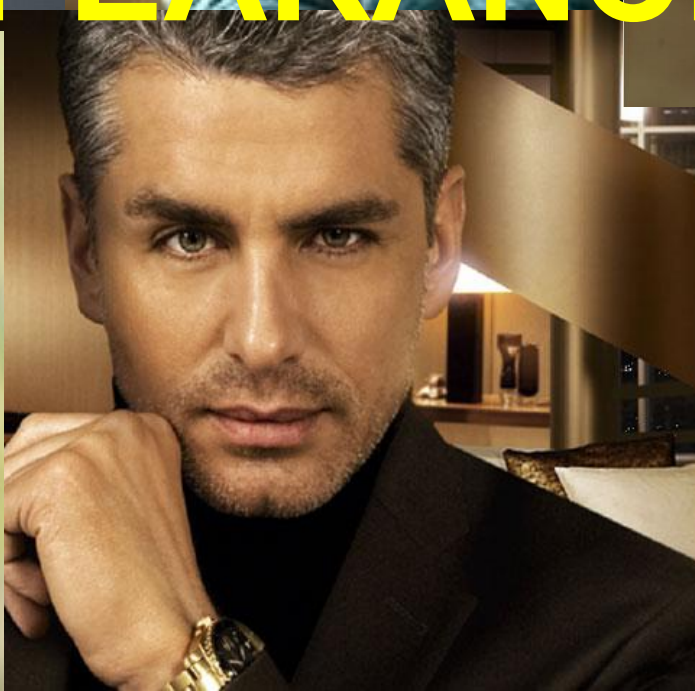
WHO'S WHO?







# APPEARANCE



# Age



teenager



child



middle-aged



baby

in her twenties



25



elderly





40

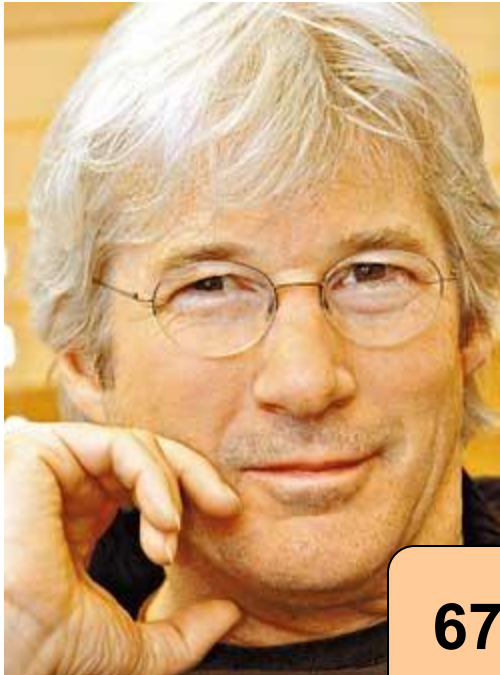


33



31

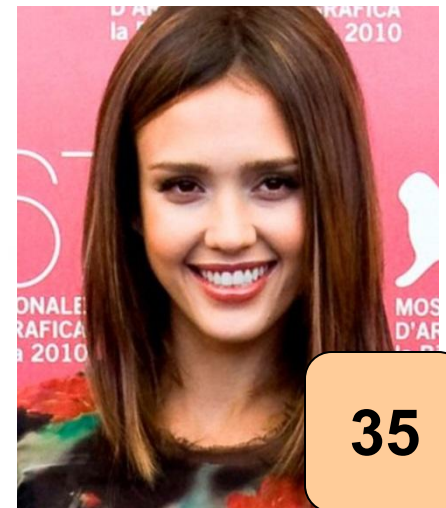
**He is ....**  
**She is ...**



67



73



35

# Build and height



tall



plump

skinny



He is . . . .

She is . . . .

short



# Hair



red

blond



shoulder-length

straight

t



spiky



curly



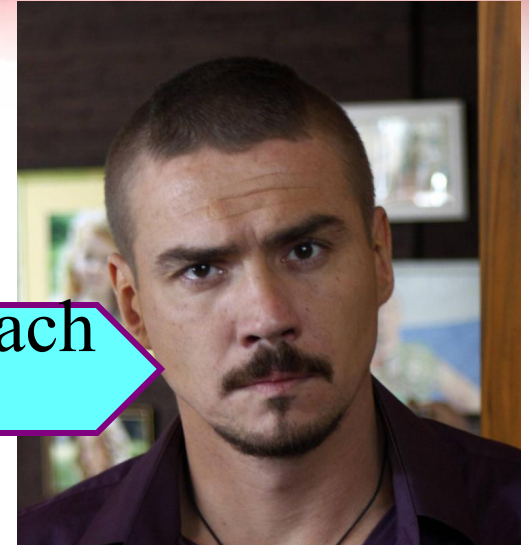
**He has ... hair.**  
**She has ... hair.**

# Special features

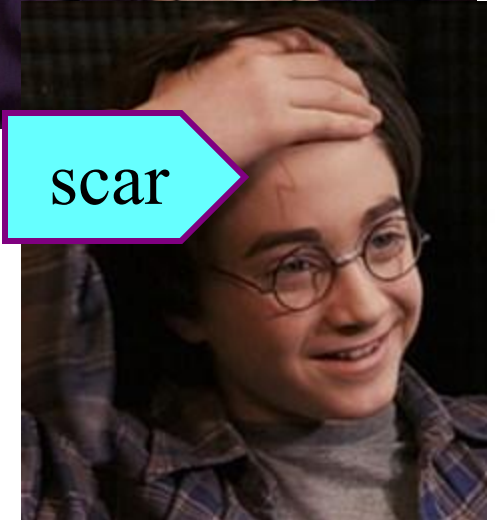
freckles



moustache  
e



scar



beard



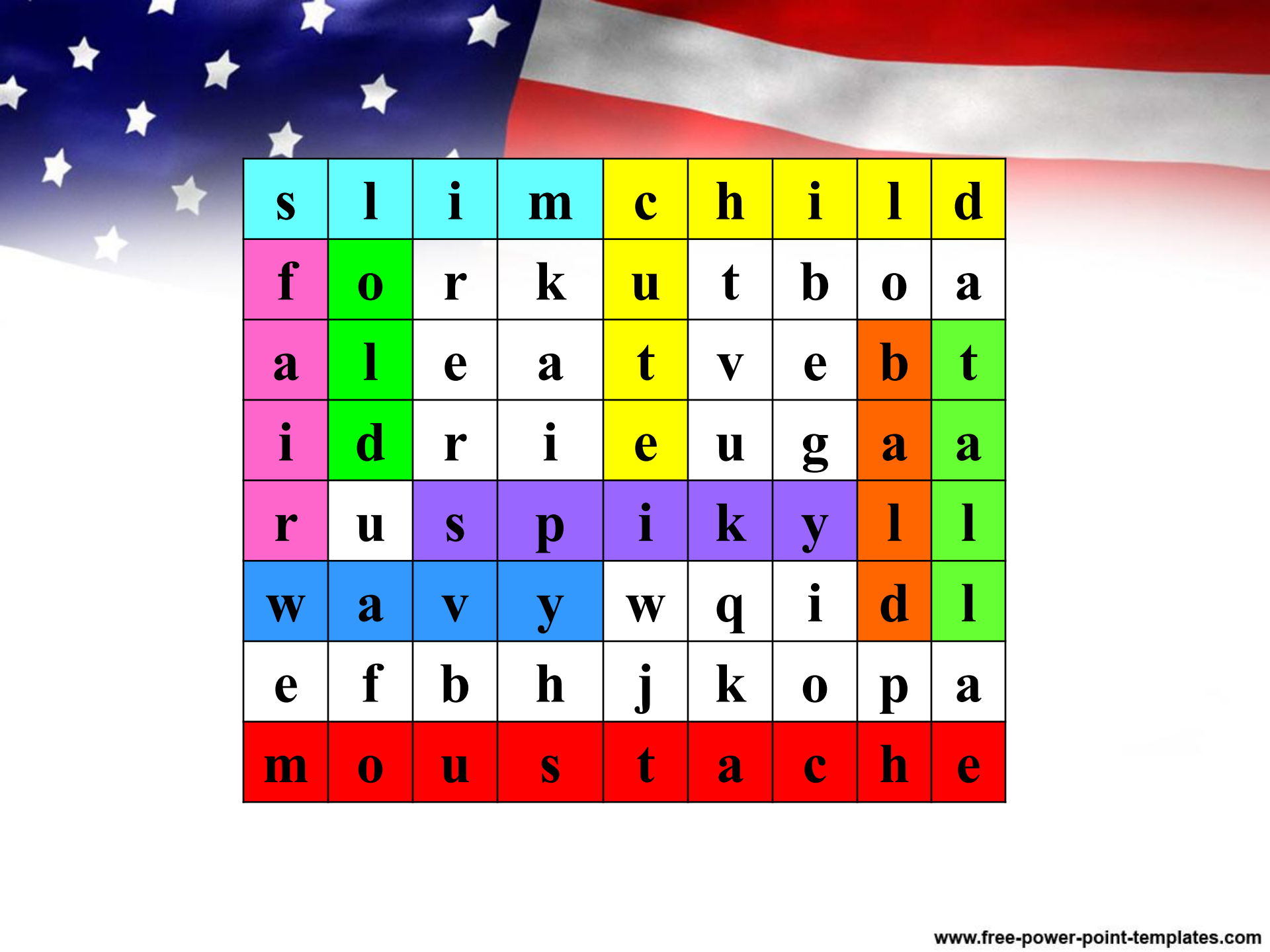
**He has . . . .**  
**She has . . . .**



**Do the language puzzle. Find ten words about  
appearance and copy them out**

s	l	i	m	c	h	i	l	d
f	o	r	k	u	t	b	o	a
a	l	e	a	t	v	e	b	t
i	d	r	i	e	u	g	a	a
r	u	s	p	i	k	y	l	l
w	a	v	y	w	q	i	d	l
e	f	b	h	j	k	o	p	a
m	o	u	s	t	a	c	h	e





s	l	i	m	c	h	i	l	d
f	o	r	k	u	t	b	o	a
a	l	e	a	t	v	e	b	t
i	d	r	i	e	u	g	a	a
r	u	s	p	i	k	y	l	l
w	a	v	y	w	q	i	d	l
e	f	b	h	j	k	o	p	a
m	o	u	s	t	a	c	h	e

# Ex 1 p 28

1) Alice / The Duchess

*“Alice in Wonderland” by Lewis Carroll*

2) Scrooge / Bob Cratchit

*“A Christmas Carol” by Ch. Dickens*

3) Dorothy / Wicked Witch

*“The Wonderful Wizard of Oz” by L. Frank Baum*

4) Peter Pan / Captain Hook

*“Peter Pan” by J.M. Barrie*





**Describe your friend or family member.  
Don't forget to tell about his/her:**

- ☐ build
- ☐ height
- ☐ age
- ☐ hair
- ☐ face
- ☐ special features
- ☐ character



*Kate is my best friend. She is short and slim. She is in her twenties. She has a long, blond hair and a round face. She is creative, artistic, curious and fit. Kate is very sociable and imaginative.*



# Ex 3 p 28

Read the first exchange in the dialogue.  
Where are Clara and Fiona? Which  
characters in ex1 were in the play?





**Read the dialogue again and mark the sentences T(true) or F(False).**

1) Clara didn't like the school play. **F**

2) Clara doesn't know the names of the actors. **T**

3) Robert has got curly hair. **F**

4) Julie looked slim in her new costume. **F**

5) Clara is interested in Matt. **T**

# Explain the words in bold

- **exciting (adj)**: sth which makes you happy and enthusiastic (**увлекательный, захватывающий**)
- **stage (n)**: part of theatre on which actors perform (**сцена**)
- **can't tell (exp)**: don't know (**не знаю**)
- **blond (adj)**: pale to white colour (**светлый, белокурый**)
- **part (n)**: role (**роль**)
- **cute (adj)**: nice looking (**симпатичный, привлекательный**)
- **introduce (v)**: meet and tell sb your name (**представиться**)



The top left corner of the slide features a portion of the United States flag, showing the blue field with white stars and the red and white stripes.

# Hometask

ex8 p29

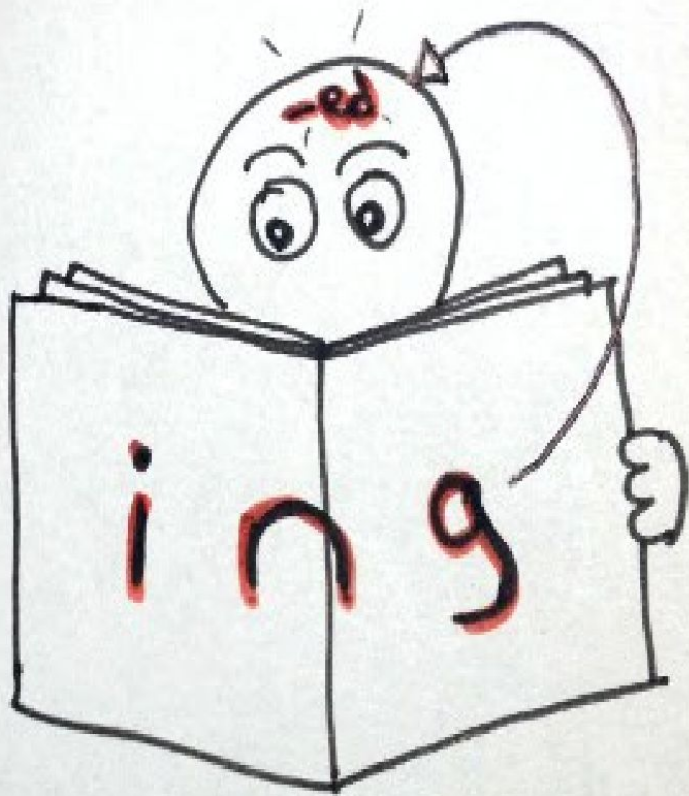
ex1 p18(Wb)



# -ed\ing participles

- This **smiling** girl is really pretty.
- She looked **scared**.

# -ed\ -ing?



-ed is feeling,  
-ing is cause.

The book is **interesting**.

I'm **interested**.





Linda is a creative young British teenager.

**How many adjectives are there in the sentence?**

# Order of adjectives

## Order of Adjectives

Opinion	Size	Age	Shape	Colour	Origin	Material	Purpose
What do you think about something?	How big or small is it?	How old or young someone or something is?	What is the shape?	What colour is it?	Where is it from?	What is it made of?	What is it used for?
pretty, ugly, silly, smart, easy, fun, ...	small, tiny, large enormous, big, ...	old, young, new, adolescent, ancient, ...	square, flat, irregular triangular, round	red, blue, pinkish	British, Chinese, Vietnam	silver, gold, copper, wood	racing (car) football (field) frying (pan)


*Guide4EasyEnglish*



# *Asking about people's appearance and character.*

- **What does he/she look like?** – Как он/она выглядит?
- **What is he/she like?** – Какой у него/неё характер?



The top left corner of the slide features a portion of the United States flag, showing the blue field with white stars and the red and white stripes.

# **Hometask**

## **ex2, 3, 4, p18 (WB)**