

# Тема урока **Great Britain**

По дисциплине «Английский язык»  
преподаватель Иткина Л.И.  
ГБПОУ РО РКРИПТ

# План урока

1. The name
2. The parts of the UK
3. The state flag
4. Location
5. The area and the population
6. Climate
7. Industry
8. Political system
9. The capital of the UK
10. Test

## 1. The Name

The earliest known name of this country is **Albion** from the Latin “*albus*” meaning “white” (because of the white cliffs of Dover, the first view of this country from the continent.

Complete the sentence:

Albion means ...

People call this country:

1. The United Kingdom
2. Great Britain
3. Britain
4. England (though England is only part of it)

Complete the sentence:

There are four ways how people  
call this country: ...

## 1. The Name

The official name of this country is the United Kingdom of Great Britain and Northern Ireland.

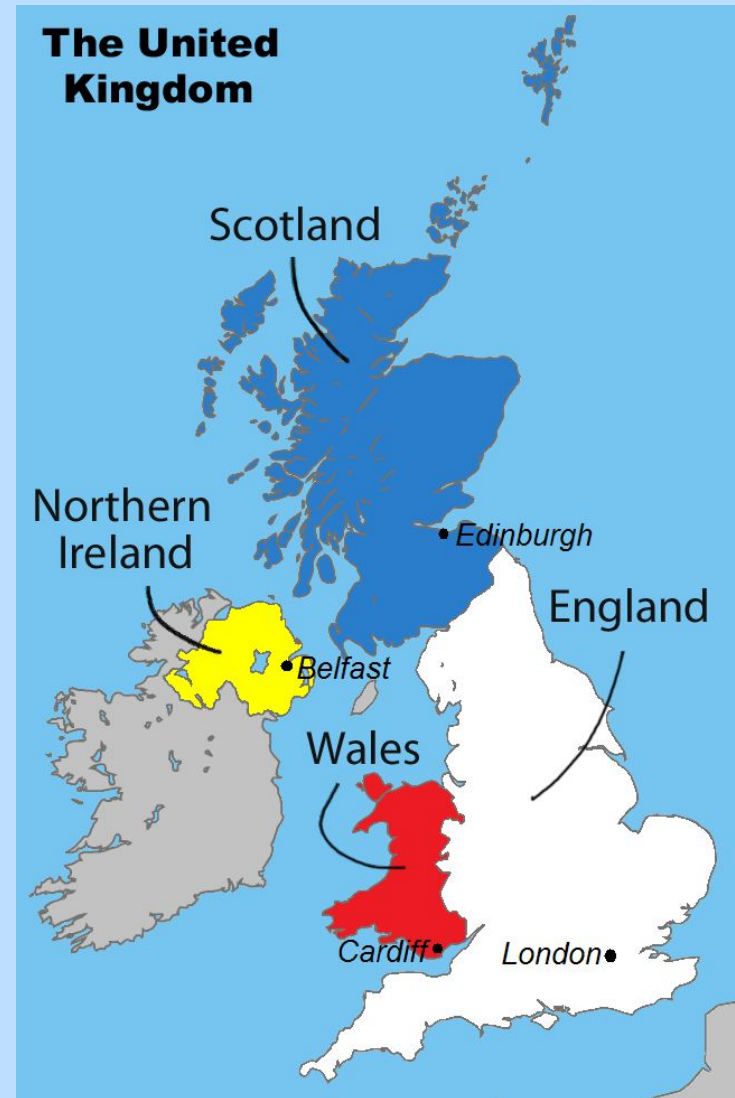
Complete the sentence:

The ... name of this country is  
the United Kingdom of ...



## 2. The parts of the UK

The United Kingdom is made up of four countries. Their names and capitals are:



### Complete the sentences:

- London is the capital of...
- Edinburgh is the capital of...
- Belfast is the capital of...
- Cardiff is the capital of...

## 2. The parts of the UK

Each country has a national sign.

- The English emblem is a **red rose**.
- The Welsh emblem is the **leek** (лук-порей) or a **daffodil** (нарцисс).
- The Scottish emblem is a **thistle** (чертополох).
- The Irish emblem is a **shamrock** (клевер).

## 2. The parts of the UK

The national emblems of which countries are they?



2

3



1



4

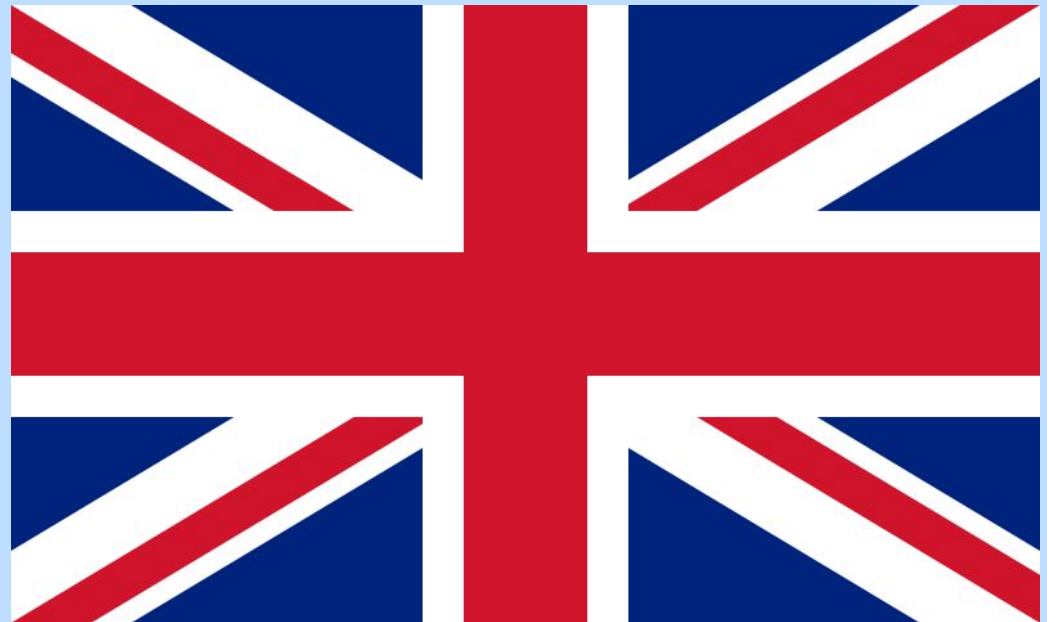
## 2. The state flag

### The Flag of the United Kingdom:

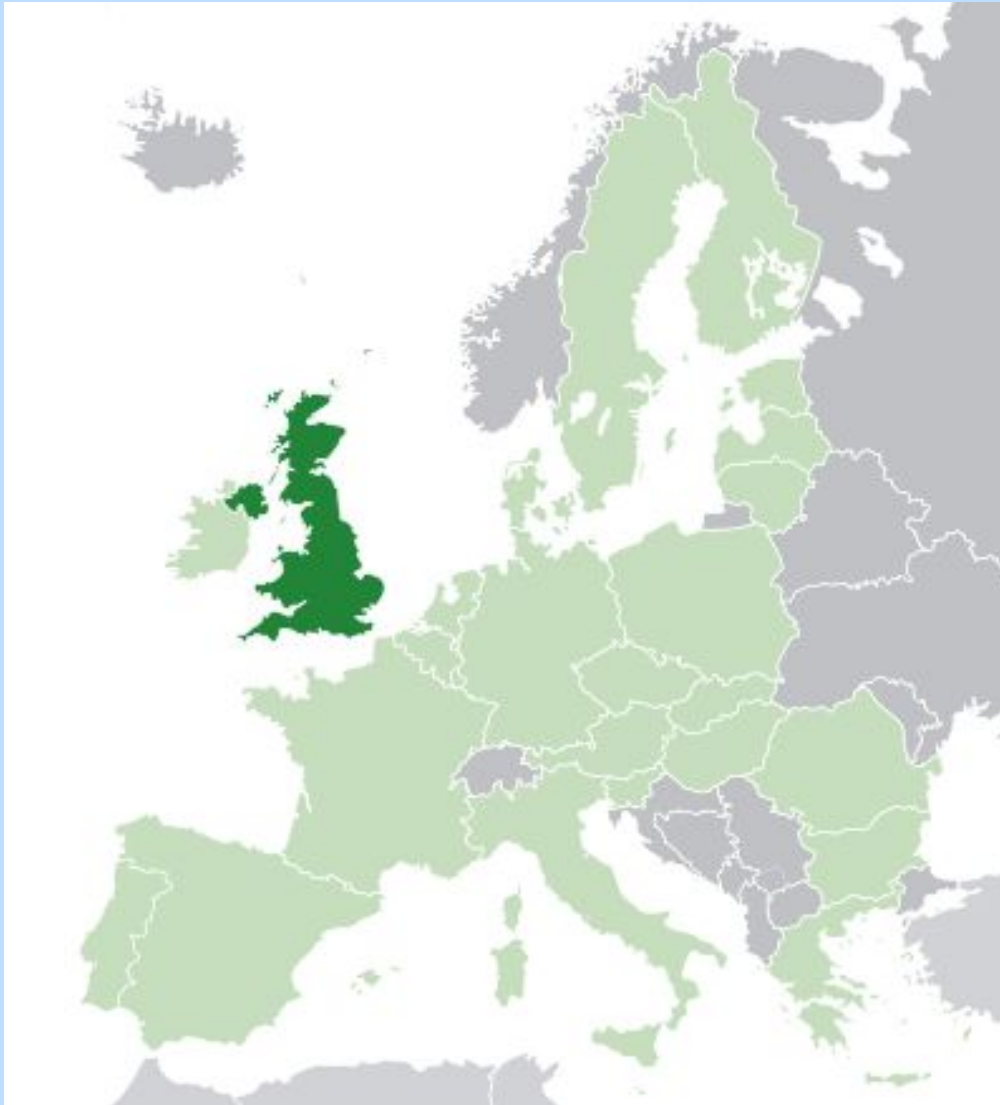
- It is red, white and blue.
- It is called Union Jack, because it is made of 3 crosses:
  1. the upright red cross of England
  2. the white diagonal cross of Scotland
  3. the red diagonal cross of Ireland

### 3. The state flag

Union Jack symbolizes the union of the three countries.



## 4. Location



- The UK is situated on the British Isles in northwestern Europe.
- The British Isles consist of two large islands and 5,500 (five thousand five hundred) smaller islands.

## Complete the sentences:

- The United Kingdom is ... on the British Isles in ...
- The British Isles ... two large islands and 5,500 smaller ...



### Water borders of the UK:

The west coast of the country is washed by the North Sea, the east coast is washed by the Atlantic Ocean and the Irish Sea. The British Isles are separated from the European continent by the English Channel and the Strait of Dover.

## 4. Location



## Complete the sentences:

- The North Sea washes...
- The Atlantic Ocean and the Irish Sea wash...
- The English Channel and the Strait of Dover separate...

## 5. The area and the population

The territory of the UK is two hundred and forty-four thousand square kilometers.

244,000 sq. km

## 5. The area and the population

The population of the UK is over 59 million people.

- 80% of the population are English
- 15% are Scots, Welsh and Irish

## 5. The area and the population

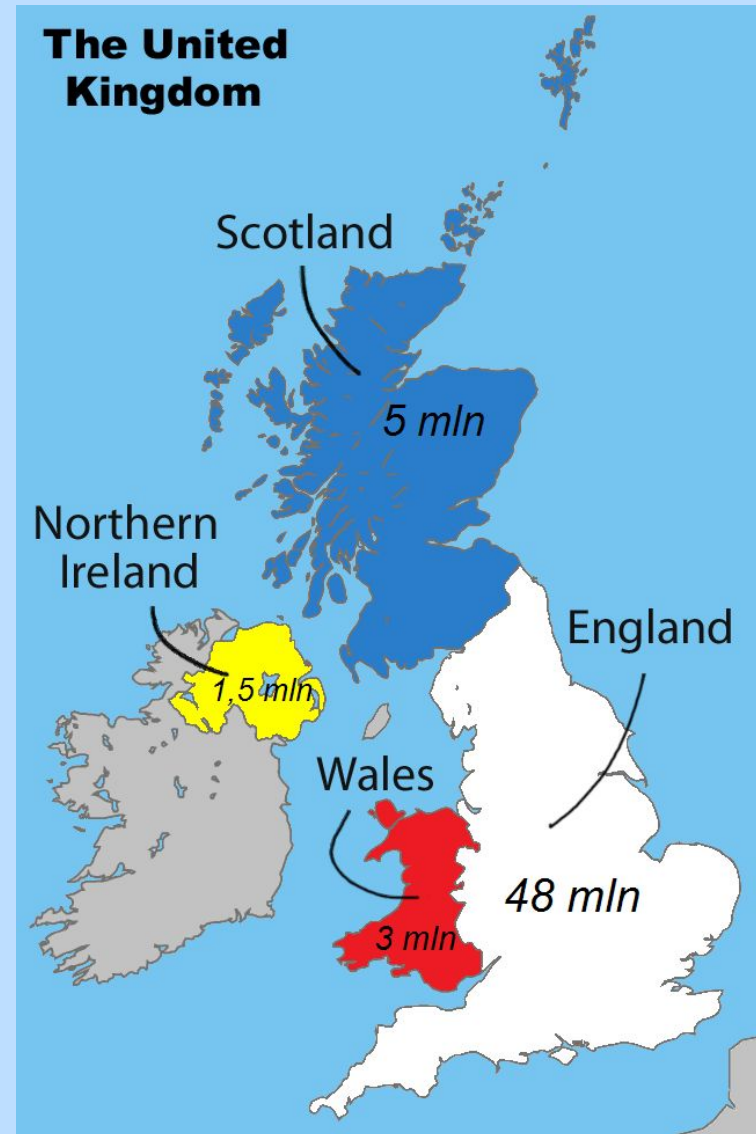
Complete the sentence:

- The population of the UK is...

## 5. The area and the population

How many people live in each part of the UK?

- 48 mln in England
- 5 mln in Scotland
- 3 mln in Wales
- 1,5 mln in Northern Ireland



## 5. The area and the population

Which parts of the UK are they?

- 3 million people live there. It is...
- 5 million people live there. It is...
- 1,5 million people live there. It is...
- 48 million people live there. It is...



- The climate is cool, mild and humid.
- It is not very cold in winter and never hot in summer. There is a lot of rain in all seasons. The most unpleasant things are fog and smog (smoke + fog). The weather changes very often and it is the favorite topic of conversation in the UK.

Guess the right variant:

Winter temperature in Great Britain:

- -5-+5 degrees
- -10-15 degrees
- -20-30 degrees

Guess the right variant:

Summer temperature in Great Britain:

- +25-30 degrees
- +18 degrees
- + 10 degrees

Great Britain is a highly developed industrial country. It produces steel, electronics, aircraft, ships, automobiles, machinery, plastics, chemicals, textile, navigation equipment.

## 7. Industry

The largest industrial centers are London, Bristol on Avon, Manchester, Belfast, Liverpool, Glasgow, Newcastle, Cardiff, Newport and Swansea.



## 7. Industry

The most important sea ports are London, Liverpool, Southampton, Belfast, Glasgow and Cardiff.



- Great Britain is a parliamentary monarchy.
- The King or the Queen is the formal Head of the Government.
- In fact the country is ruled by the Parliament, which consists of the House of Commons and the House of Lords.



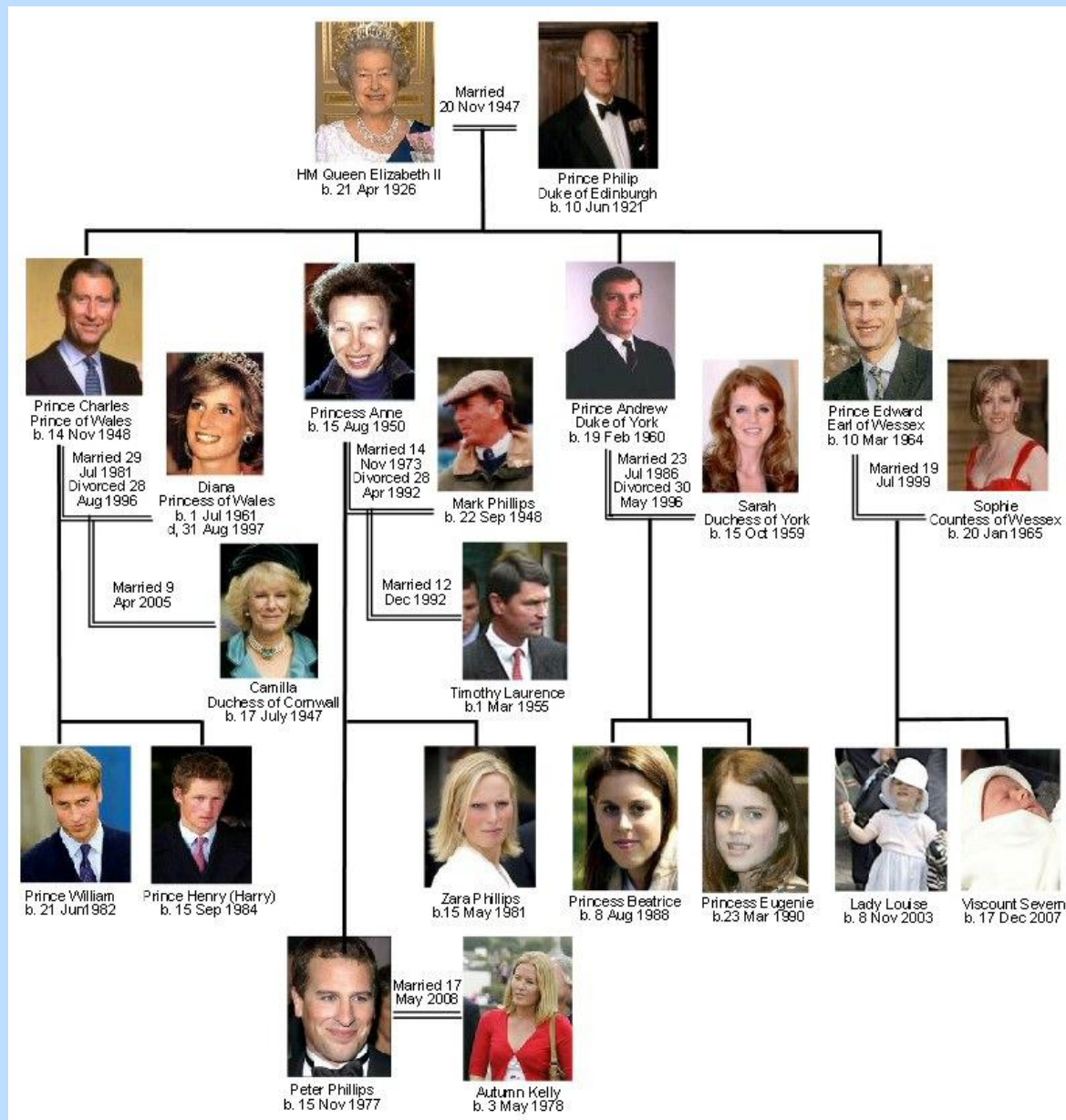
## 8. Political system



- Queen Elizabeth II and the royal family take part in many traditional ceremonies.
- The Queen and as such is the best symbol of the British monarchy and national unity.



## 8. Political system



## Complete the sentences:

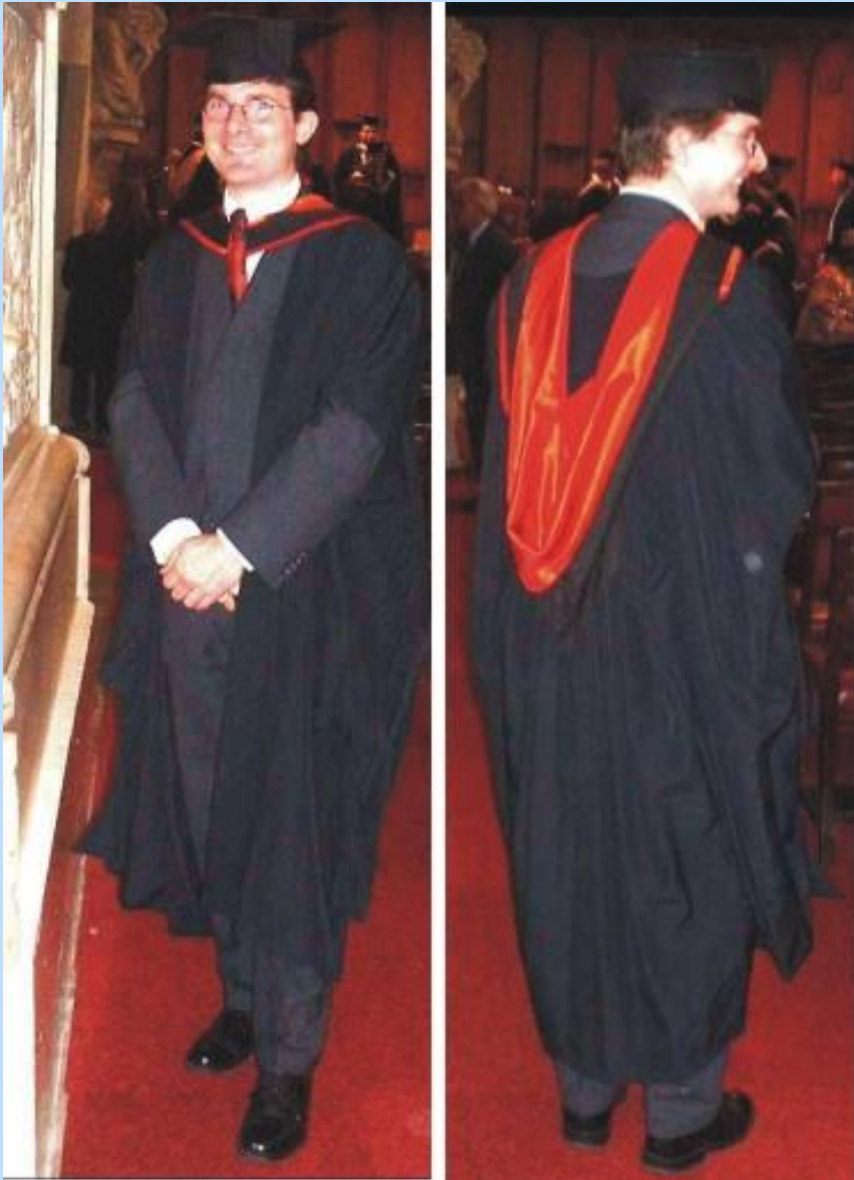
- The Queen is the best symbol ...
- The royal family together with the Queen take part in ...

## 8. Political system

Buckingham Palace is the Queen's official London residence.



## 8. Political system



Oxford and Cambridge are the oldest and the most elite universities in Great Britain. They are called Oxbridge. Education is not free it is very expensive.

Complete the sentence:

...are the intellectual centres of  
Great Britain and Europe.

## 9. The Capital of the UK

London is the capital of the United Kingdom. It has been a capital for nearly a thousand years.



## 9. The Capital of the UK

It is traditionally divided into the City, the West End, the East End and Westminster.



## 9. The Capital of the UK

London stands on the river Thames. The Thames is one of the world's longest rivers. There are 15 bridges across the Thames in London.





## 9. The Capital of the UK



Big Ben is one of the symbols of Great Britain. Big Ben is a huge clock in one of the tall towers of the Houses of Parliament. The sound of Big Ben is well known to all British people.

1.

The population of the  
United Kingdom of Great  
Britain and Northern  
Ireland is...

A.

97 million people



B.

37 million people



C.

Over 57 million  
people



2.

The total area of the  
United Kingdom is...

A.

500 000 square  
kilometers

B.

244 000 square  
kilometers

C.

17 000 square  
kilometers

**3.**  
The British Isles consist  
of...

**A.**  
two large islands  
and 100 small  
islands

**B.**  
two large islands  
and 50 small  
islands

**C.**  
two large islands  
and 5 500 small  
islands

4.

About 80 percent of the  
population of Great Britain  
live...

A.

on the coastline

B.

in cities and towns

C.

in the country

**5.**

The most important river of  
Great Britain is...

**A.**

the Trent

**B.**

the Thames

the Clyde

**6.**

Warm waters of ... make  
the climate of Great Britain  
mild

**A.**

the Irish Sea

**B.**

the Gulf Stream

**C.**

the Strait of Dover

7.

The highest mountain of  
Great Britain is...

**A.**

the Highlands in  
Scotland

**B.**

the Ben Nevis in  
Scotland

**C.**

the Pennines in  
England



8.

The climate of Great Britain is...

A.

cold



B.

mild



C.

hot



## 10. Test

**9.**

The flag of the United Kingdom is...

**A.**

red and blue

**B.**

white and red

**C.**

red, white and blue

## 10. Test

**10.**  
The English emblem is...

**A.**  
a thistle



**B.**  
a shamrock



a red rose



11.

The official London  
residence of the Queen  
is...

A.

Buckingham  
Palace

B.

Westminster  
Palace

the Tower

**12.**

The district of London  
where rich people live is...

**A.**

the East End



**B.**

the City



the West End

**13.**

A big parade is held in  
London...

**A.**

on the Queen's  
real birthday on  
the 21<sup>st</sup> of April

**B.**

on the Queen's  
official birthday on  
the second  
Saturday in June

**14.**

The capital of Scotland  
is...

**A.**

Cardiff

**B.**

Edinburgh

Belfast

**15.**

The flag of Great Britain is called...

**A.**

a tricolor

**B.**

stars and stripes

**C.**

Union Jack



**16.**

The monarch's name is...

**A.**

King George

**B.**

Queen Elizabeth  
the Second

Queen Victoria

**17.**  
The weather in Great  
Britain is...

**A.**  
very hot in summer

**B.**  
very cold in winter

very changeable

**18.**

The western coast of Great Britain is washed by...

**A.**

the North Sea

**B.**

the English Channel

**C.**

the Atlantic Ocean  
and the Irish Sea