

Winter Palace



I'd like to tell you about Winter palace



It is located on the Palace square.



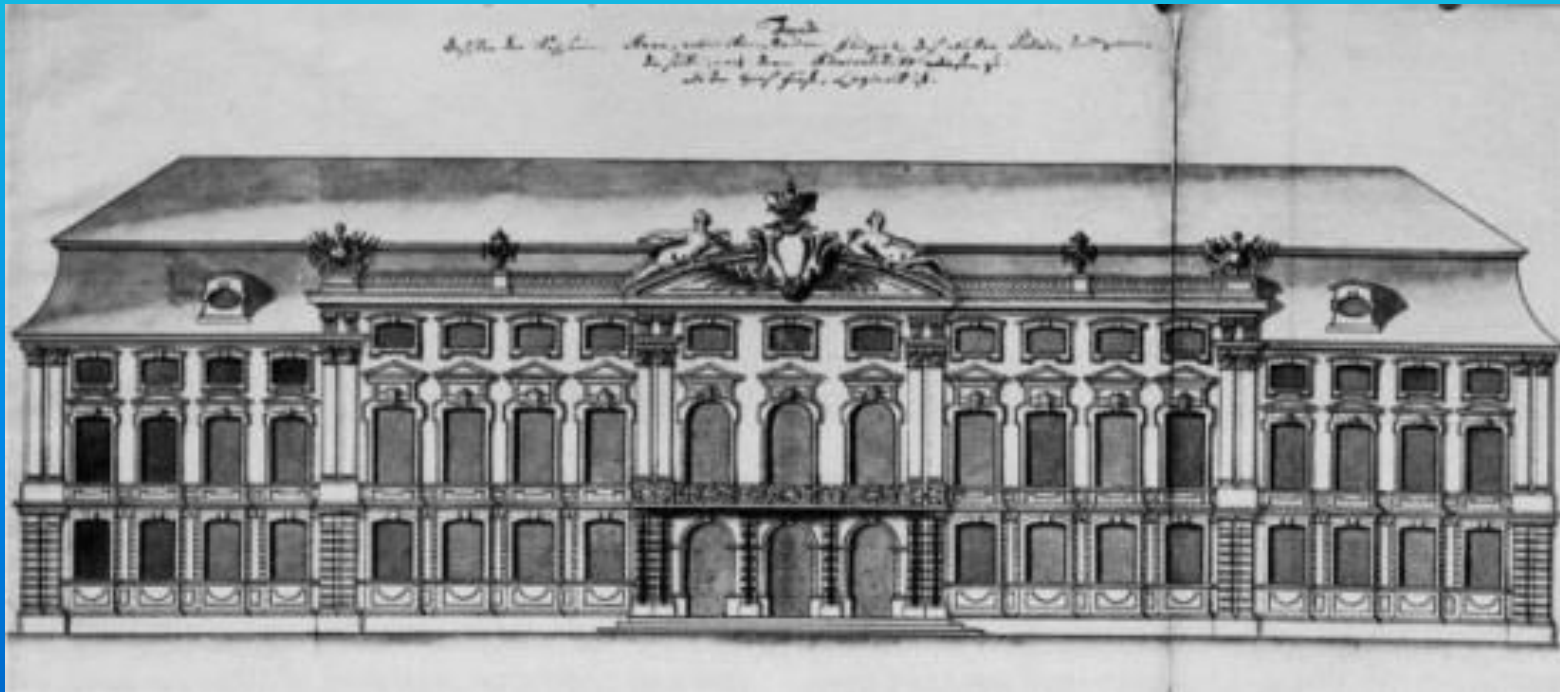
Surviving the Winter Palace, was built by B. Rastrelli



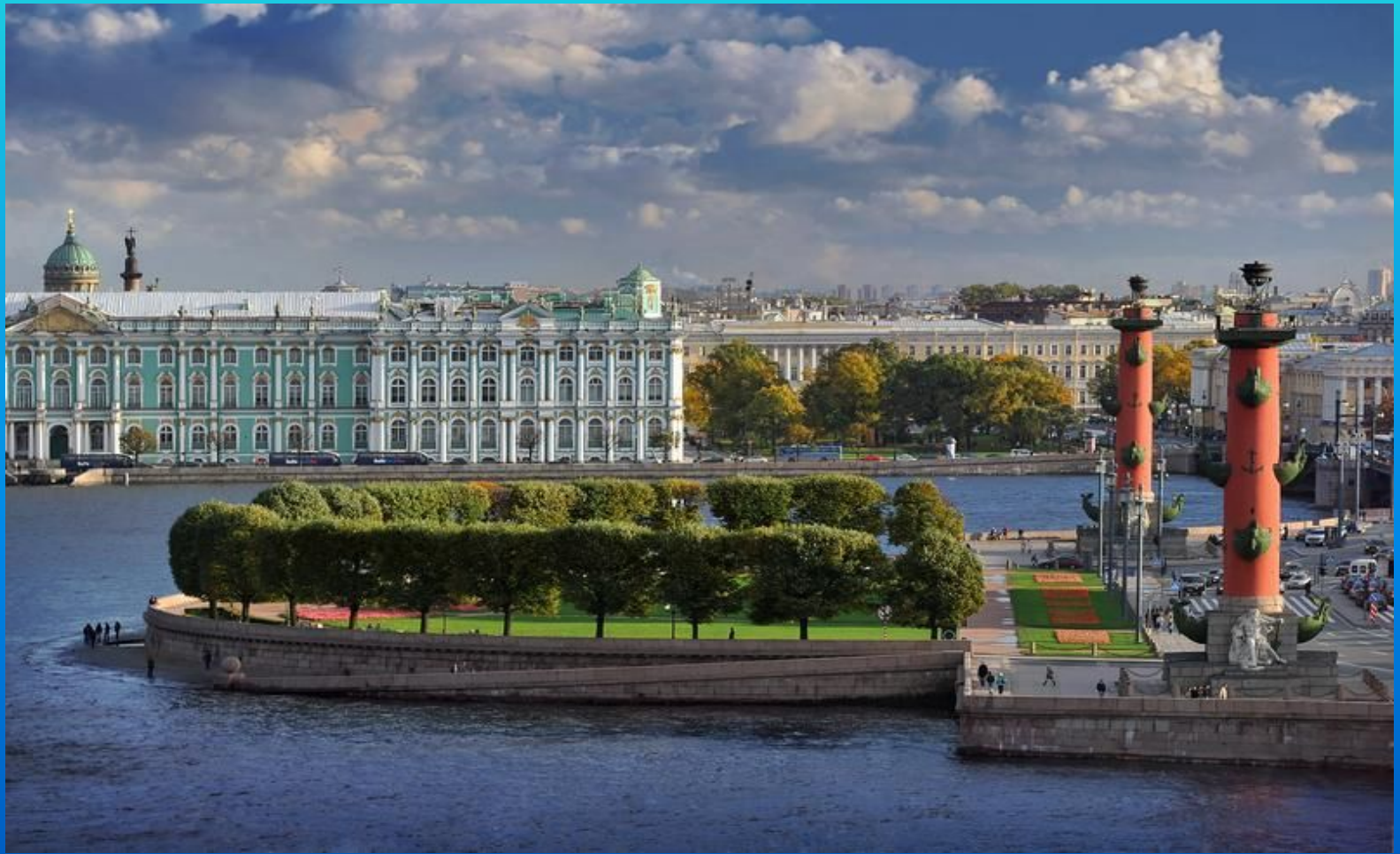
The work on it was started in 1754 and completed in 1762.



The total area of the Winter Palace – 60,000 square meters, it has over 1,000 rooms and 117 different staircases. Thousands of people worked on the site. Their working day lasted 14 hours.



It was a magnificent two-storey building that attracts power stone, used as the main construction material.



It was built in honor of Emperor
Alexander the first



It is visited by thousands people per year.



Thank you for your attention

