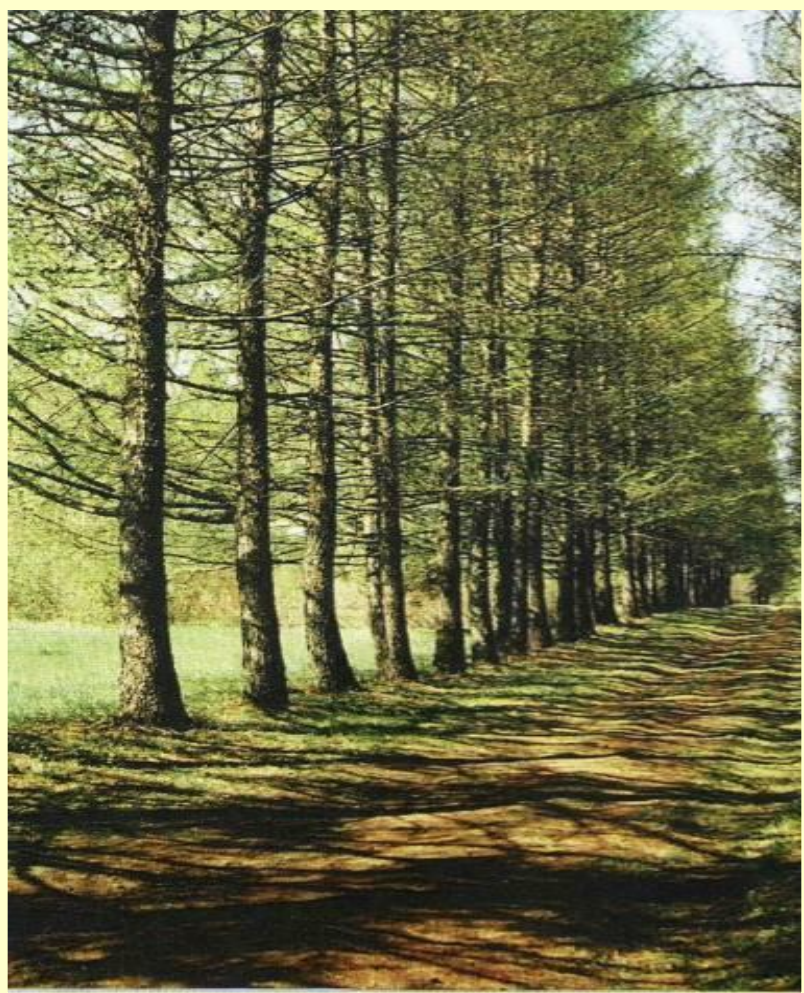




# THE MONUMENTS OF NATURE IN KIROV

МБОУ СОШ №52 г.Кирова

# ZARECHNY PARK



**This wood is located on the right bank of the Vyatka (river) near Kirov town.**

**It had the name The Red Wood over the Vyatka river.**

# ZARECHNY PARK

- ❖ It had its name beginning with 1934 and was the lovely place for the rest of Vyatka citizens.
- ❖ In 1989 the so called ecological path was made there. It is the walking way about 3 km.





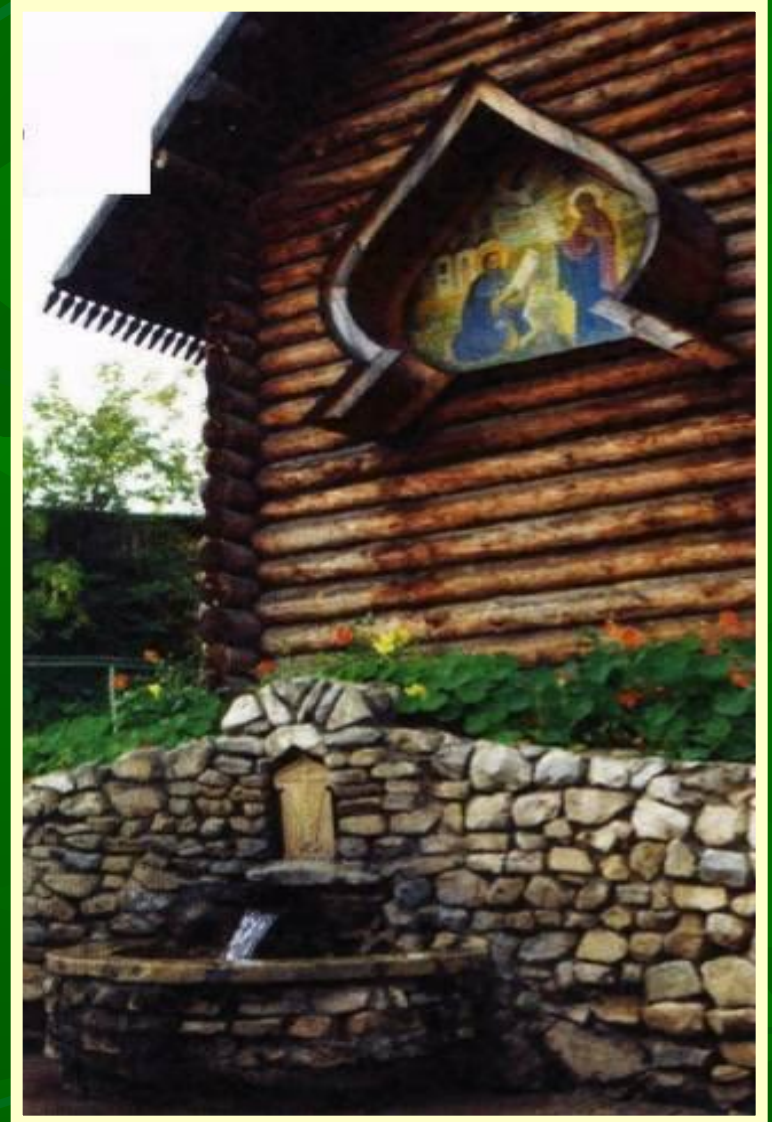
# ZARECHNY PARK



МБОУ СОШ №52 г.Кирова

# THE SAINT WATER NEAR TRIFANOV MONASTERY

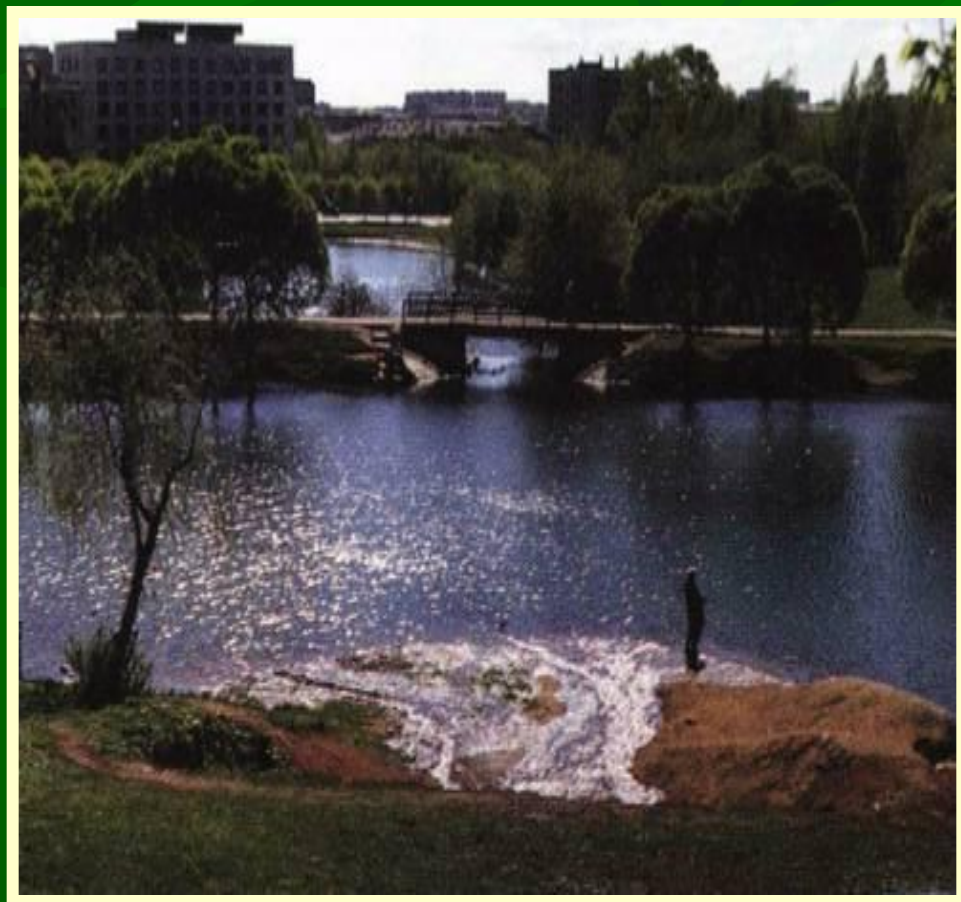
- ❖ It is the so called saint water ( very clean and useful for health ).
- ❖ Citizens believe that this water will help them to avoid the illnesses if they believe in god.



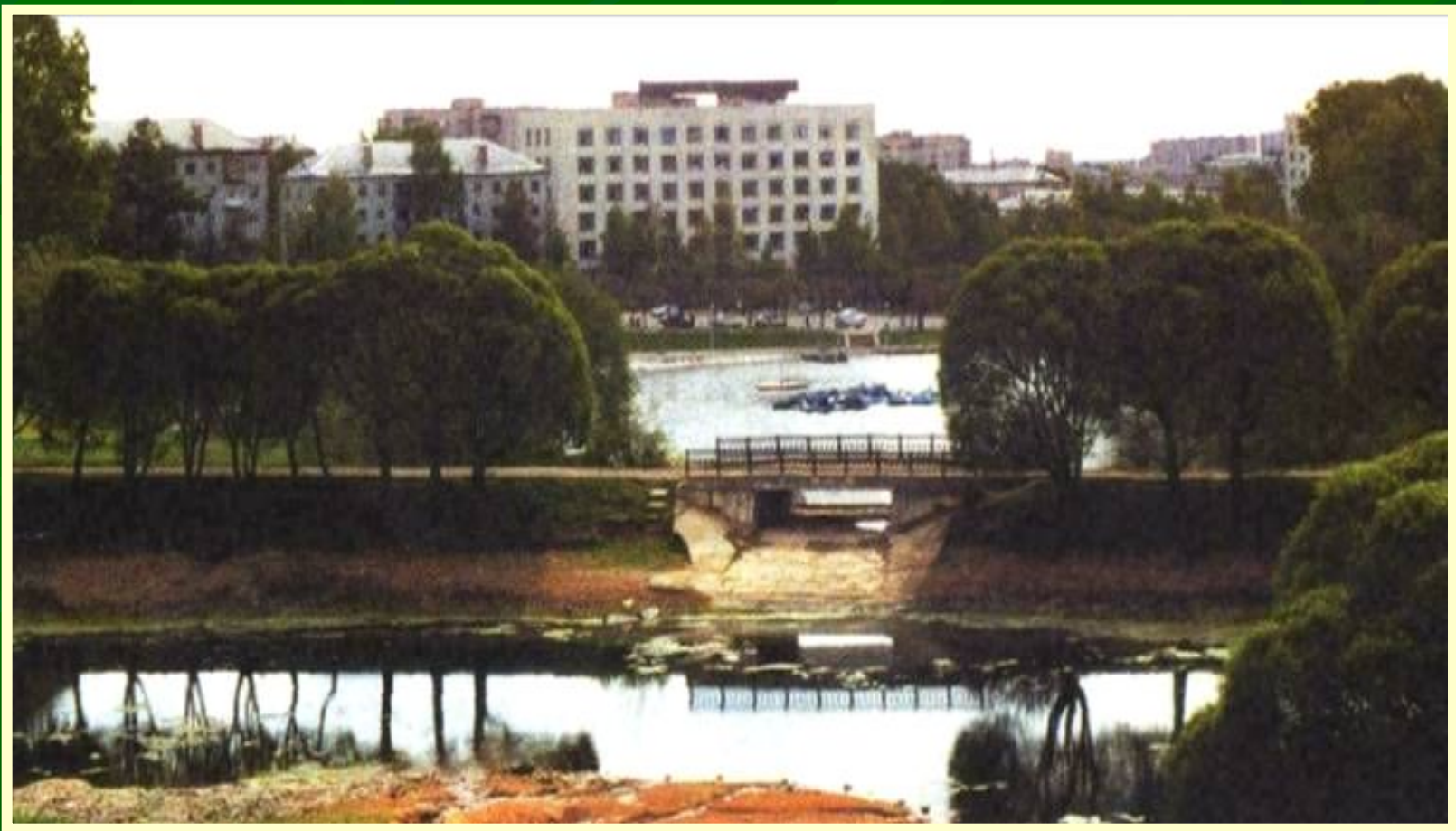


# SPRINGS IN THE PARK OF KIROV

- ❖ It is water welling up from the Earth. There are over 20 springs in this park. People have decorated them with stones.
- ❖ These springs stream to two ponds.



# SPRINGS NEAR THE DIORAMA IN THE PARK OF KIROV



# LAKE KELEINOE

- ❖ This lake is situated near the settlement Ganino, it is the place for the rest of the people.
- ❖ Wonderful pine wood is here too.





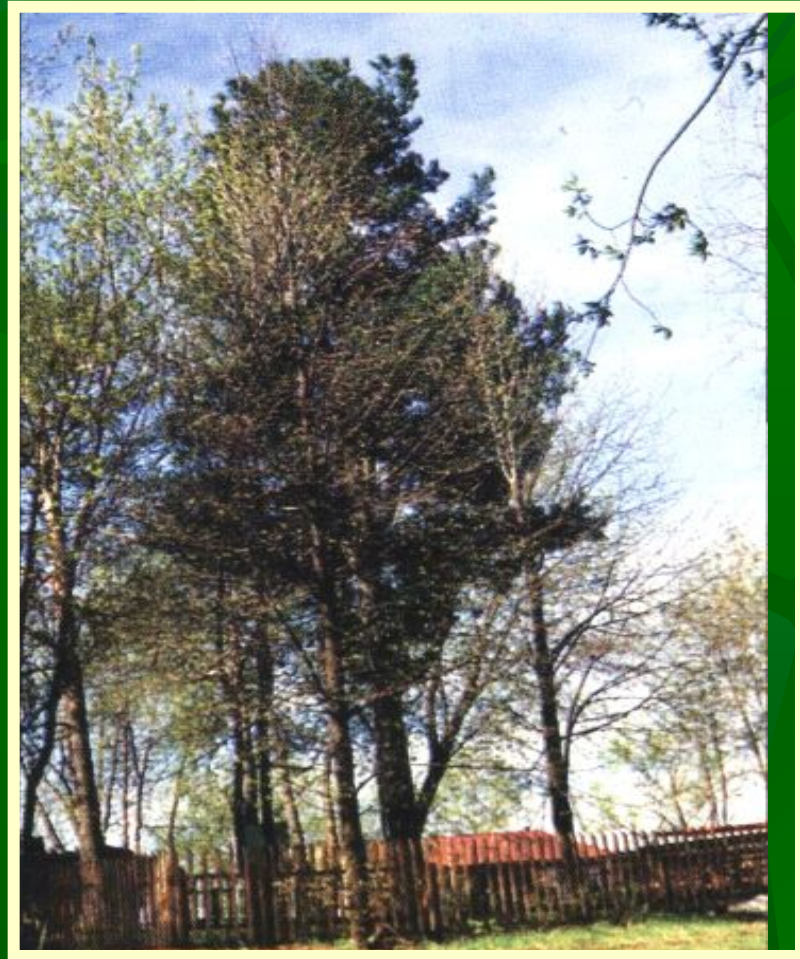
# BLACK LAKE NEAR THE SETELMENT OF KOMINTERN



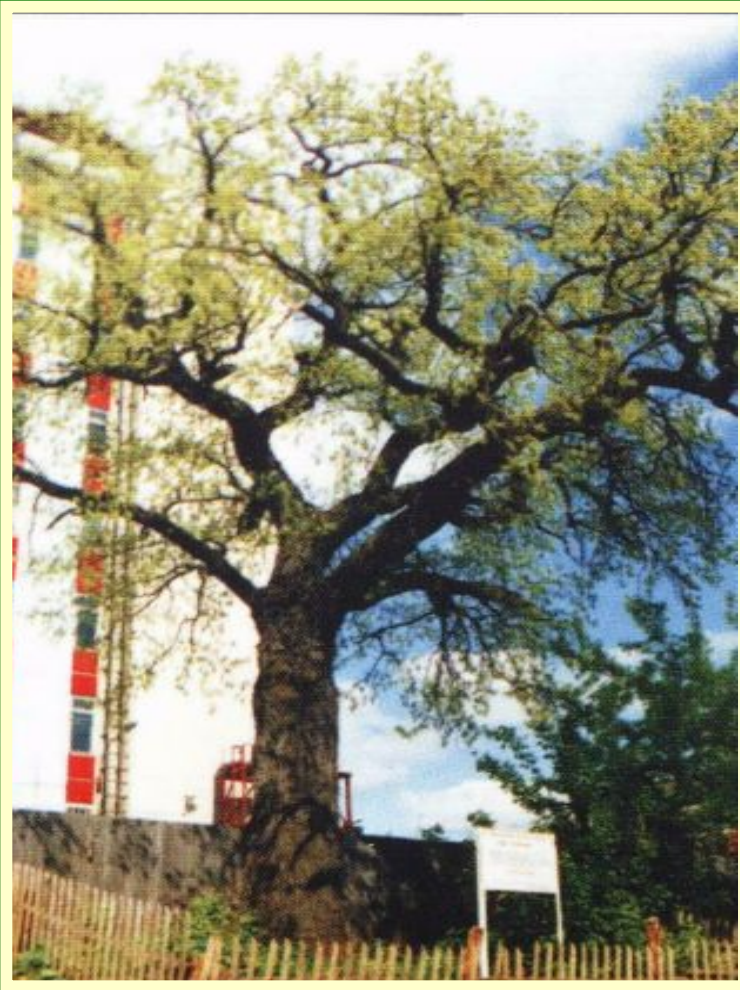
- ❖ It is also the best place for the rest of people.

# THE SIBERIAN PINE IN SLOBODA FILEIKA

- ❖ **The lonely Siberian Pine.**
- ❖ **We have no such trees in our forest.**



# THE OLD OAK

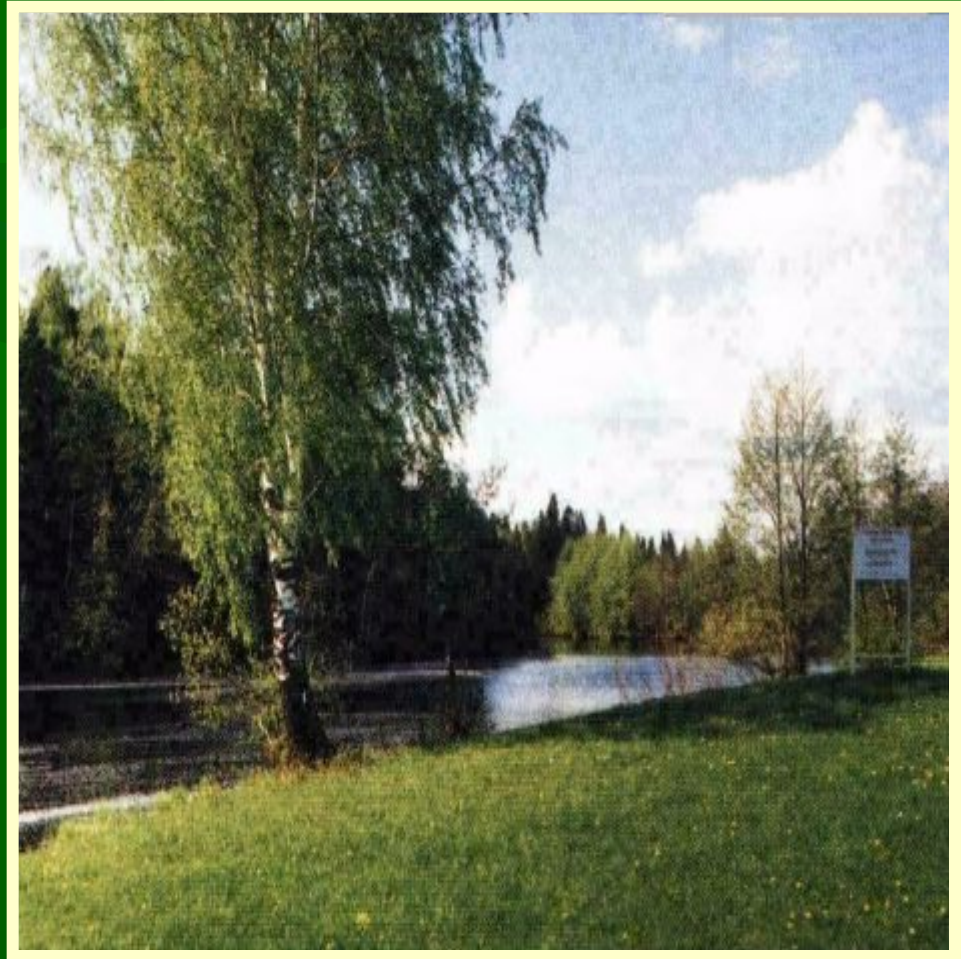


- ❖ It is one of the most beautiful oak in our town.
- ❖ It was planted in 1787, its height is 21 m. and its diameter is 104 sm.



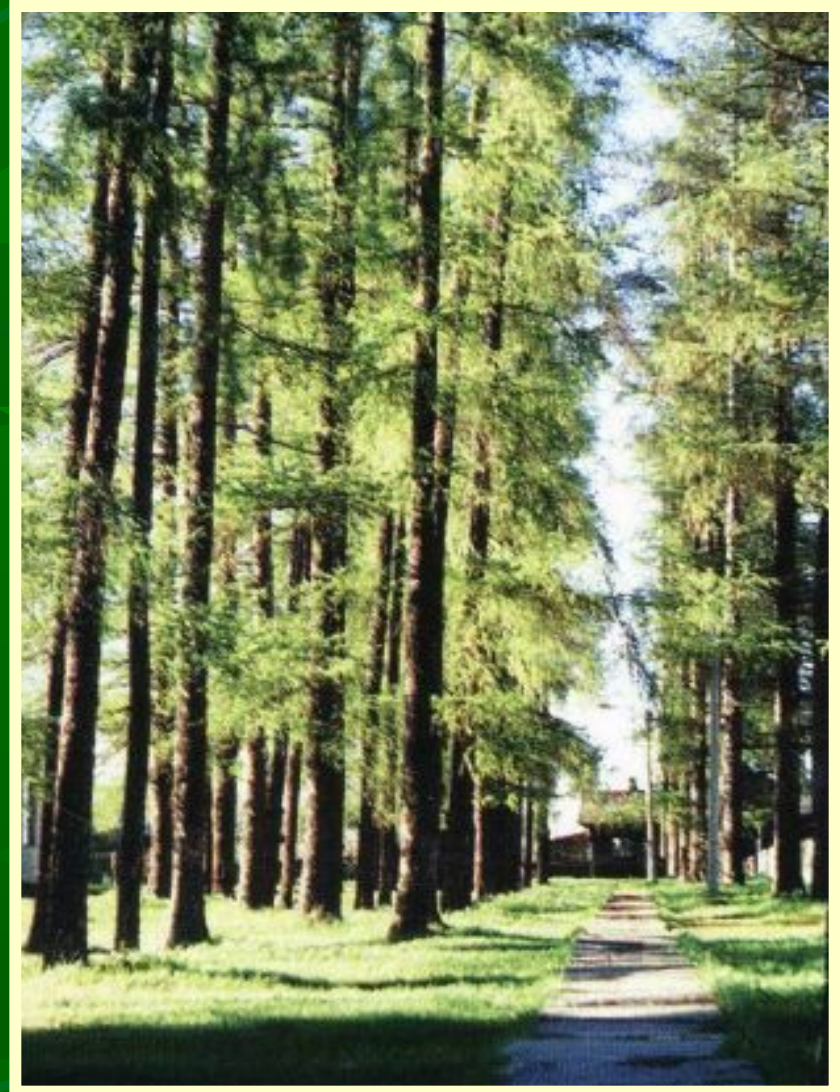
# LAKE KRIVEL

- ❖ It is the picturesque old Lake near the settlement Sidorovka on the right bank of the Vyatka.
- ❖ The length is 650 m. and wide is about 50 m. It is the place for the rest and for fishing.



# THE LARCH PATH IN THE VILLAGE VERKHNEYA TALITSA

- ❖ The larches are planted in 5 rows – 100 m. length. The general length is 200 m. The wide is 12m. and the height is 45 m.





# THE PARK OF DENDROLOGY IN KIROV REGION

- ❖ It is situated near Novovyatsk town not far from the bank of the Vyatka. Its total area is 50,6 he.
- ❖ One can find about 111 kinds of plants there.





# BOTANICAL GARDENS

- ❖ Its total area is about 3 he. You can find over 180 kinds of different plants there.
- ❖ There are not only native kinds of plants but also one can find many interesting trees and flowers from many countries of the world: North America, Asia, Sothern part of Russia.



# FUTURE PARK OVER THE MAIN RIVER -VYATKA

- ❖ People in Kirov would like to make a new park for the comfortable rest out of doors and in order to preserve our valuable ecological complex.





# OUR FAMOSE RAVINE



МБОУ СОШ №52 г.Кирова



The background of the slide is a solid green color with a faint, stylized pattern of overlapping leaves and branches in a slightly darker shade of green.

**THANK YOU FOR YOUR  
ATTENTION!**

## Источники:

Энциклопедия земли Вятской Природа –Киров  
1997

Красная книга Кировской области //

Электронный ресурс

*[hi-bio.narod.ru/redbook/content.html](http://hi-bio.narod.ru/redbook/content.html)*

*[www.kotelnich.info/priroda/redbook/index.shtm](http://www.kotelnich.info/priroda/redbook/index.shtm)*

*фото из личного архива*