

The United Kingdom of Great Britain and Northern Ireland





Jeopardy Game

Travelling to Great Britain





Game Board

| Geography | Famous People | Symbols | Cities | Holidays |
|-----------|---------------|-----------|-----------|-----------|
| <u>10</u> | <u>10</u> | <u>10</u> | <u>10</u> | <u>10</u> |
| <u>20</u> | <u>20</u> | <u>20</u> | <u>20</u> | <u>20</u> |
| <u>30</u> | <u>30</u> | <u>30</u> | <u>30</u> | <u>30</u> |
| <u>40</u> | <u>40</u> | <u>40</u> | <u>40</u> | <u>40</u> |
| <u>50</u> | <u>50</u> | <u>50</u> | <u>50</u> | <u>50</u> |



**The geographical name of the isles
on which the UK is situated.**



The British Isles





**The channel which separates
Great Britain from Europe.**



The English Channel or La Manche



**The most famous lake in Scotland
where a strange creature lives.**



Loch Ness





A cat in the box



**Listen to the music.
What musical instrument is it?**





A Scottish Bagpipe





The poetic name of Ireland in
which its lush greenery is
reflected.



The Emerald Island





The head of the state.
She doesn't rule the country but
plays an important part in the
life of the nation.

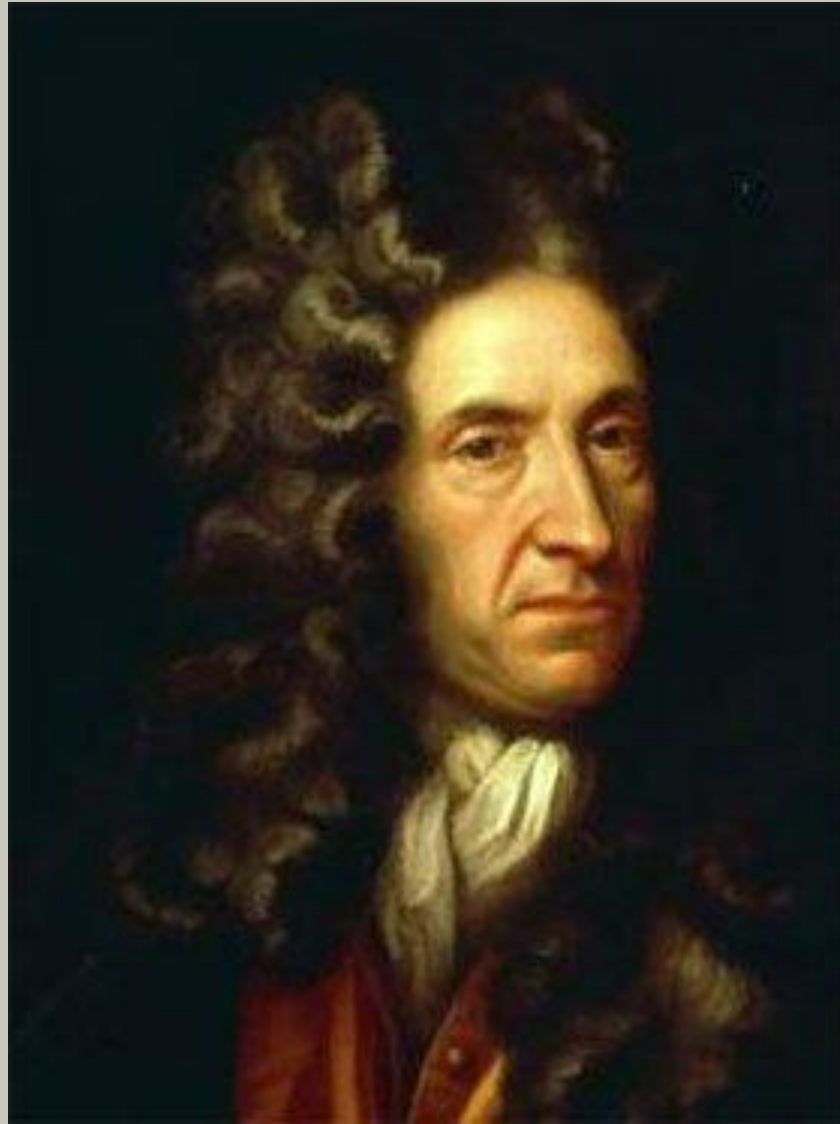


Queen Elizabeth II





**"The father of English prose".
The book about Robison Crusoe
made him famous.**

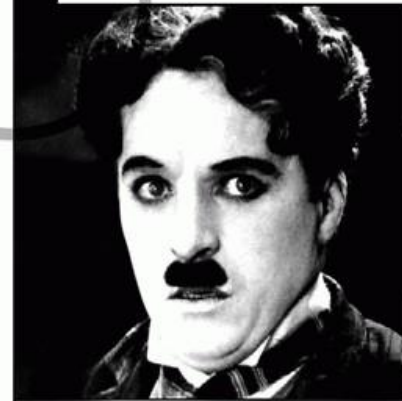


Daniel Defoe





The most famous English comic actor and film producer.



- CHARLIE CHAPLIN -

CHARLIE CHAPLIN

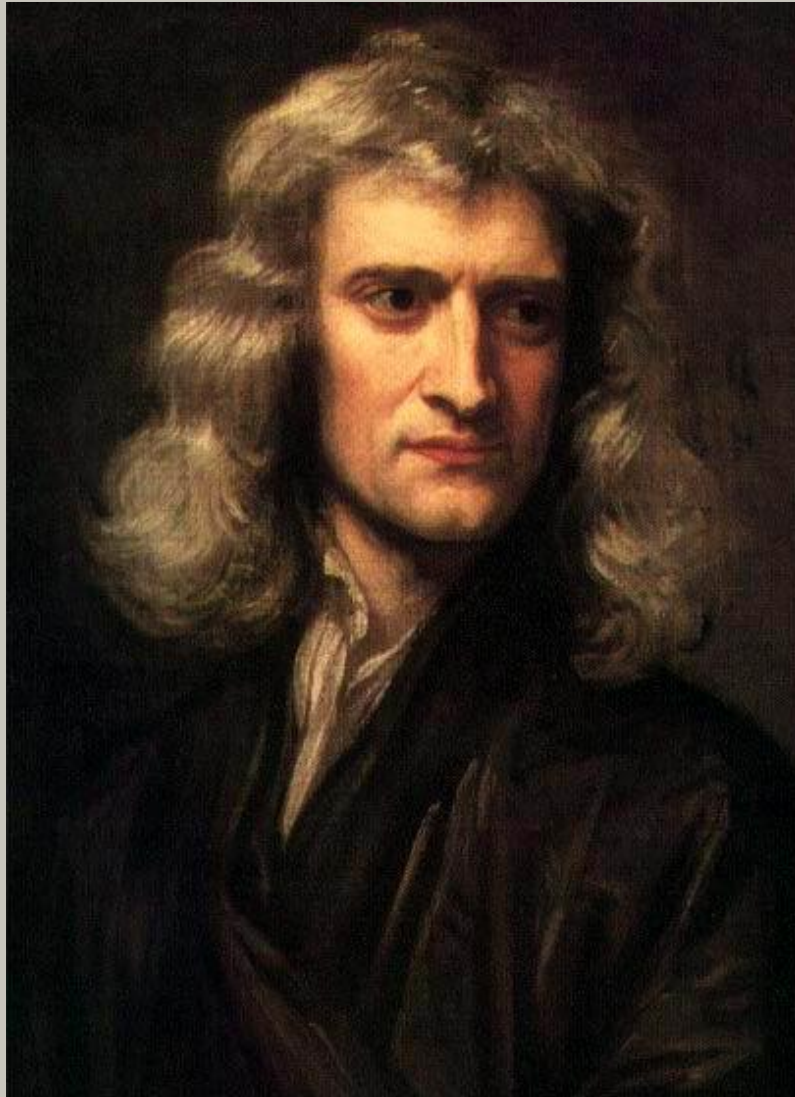


Charlie Chaplin





**The great English scientist.
He discovered the law
of gravitation.**



Isaac Newton





The great English scientist,
his theory of evolution opened
a new period in the science.



Charles Darwin





**The number of crosses on the flag
of Great Britain**

St. Andrew's Cross

**St. George's
Cross**



St. Patrick's Cross

Three crosses





The floral symbol of Scotland



The purple thistle





Ireland's Patron Saint



St. Patrick





**The national personification
of Great Britain similar to
the American "Uncle Sam"**

WHO'S ABSENT?



Is it You?

John Bull





**On the coat-of-arms of the UK
you can see a lion and a unicorn.
What do they symbolize?**



A. S. Jamieson



The Lion is the symbol of power and royalty, the Unicorn symbolizes purity.



The capital of Great Britain



London





**Two cities where
the oldest universities are located.**



Oxford and Cambridge





**The city where the most
prestigious tennis tournament
takes place.**



Wimbledon





The capital of Wales



Cardiff





**The birthplace of great
William Shakespeare**



Stratford-upon-Avon





The most popular holiday which symbolizes the birth of Jesus Christ.



Christmas





**The most common symbol
of Halloween**

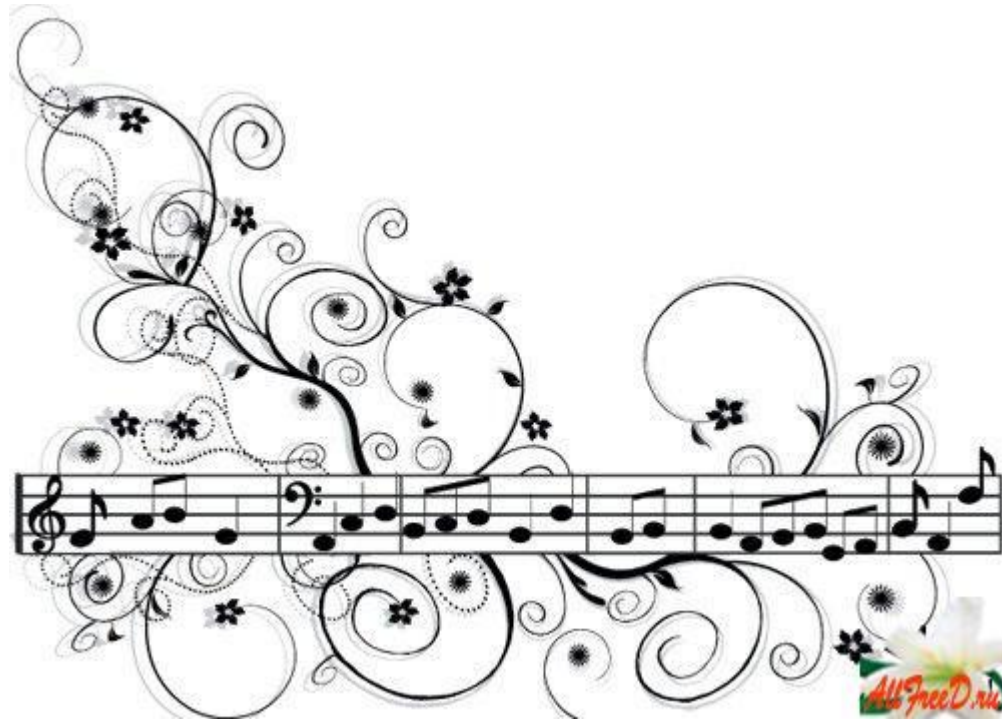


**Jack-o-lantern
(a pumpkin)**





The old song written by Robert Burns.
People sing it at the end of the year
at midnight.



Auld Lang Syne





This holiday is celebrated on March 17th.
Shamrock leaves and leprechauns are
the symbols of this day.



St. Patrick's Day





This holiday is celebrated on November 5th.
People mark this day by burning a dummy
made of straw and old clothes on a bonfire.

Happy Guy Fawkes Day !



Guy Fawkes Day

