



# Microsoft corporation

Ashutasty 2015



171789, h. 434, Gagarin  
Street, Washington, USA.

Tel./Fax: (3527) 37 – 73 – 37

Email: Microsoft@mail.ru

My name Aleksandr Stepanov-let me tell you about the story of Microsoft. In 1899 a company was established in USA, near Canada primarily for introductions of new computer programs, *To head the company Microsoft Bill Gates, the richest man in the world.*

In 1920 Microsoft has created a market that is impenetrable to any other company except for itself. . With a market value that far outstrips its racing sales. Over the year, the company diversified its activities to all areas of the business.

It"s Mr. Bill Gates job to :

1-don work long hours.

2-must not be late for work.

3-can entertain visitors to get to work.

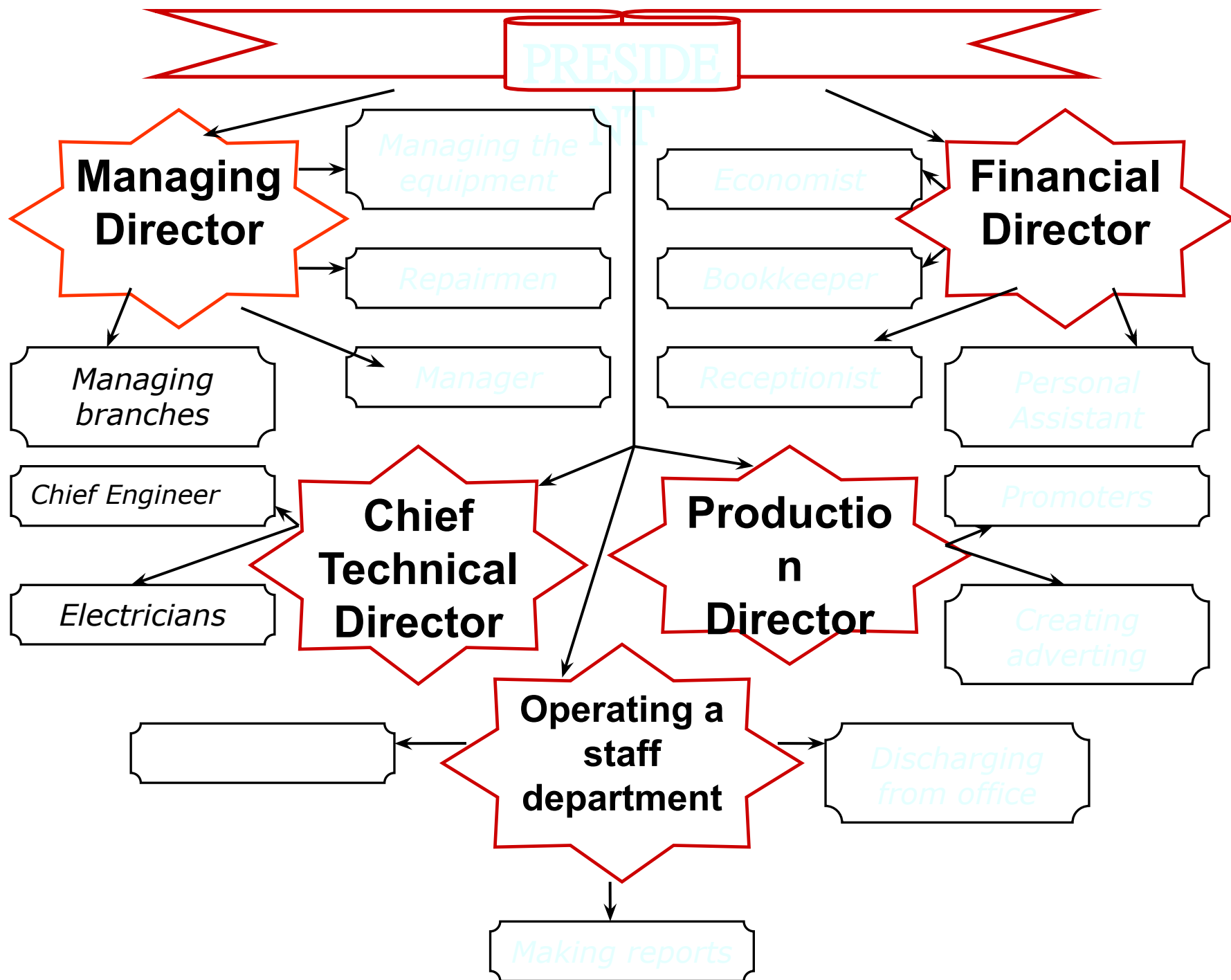
4- don't smoke at work.

5-must visit clients.



Microsoft is the world's №1 software company. Its software includes the Windows operating systems, Excel spreadsheets, word-processing programs, and reference works. These companies operated in USA, Russia, Brazil, Germany, Austria, France, Italy and Great Britain eats.

Company Microsoft the founder which is Bill Gates is today one of largest USA industrial concerns and of the elite group of leading international on software.



# Organizational Structure



The organization structure of company Microsoft depends on different matters ,such as-size of the company ,type of ownership ,availability of regional divisions , etc . But most of the companies have certain usual functions I showed on the Organizational Chart . Job Descriptions are attached below .

**Board of Directors**-is the highest level in the organizational structure of any corporation. Usually from four to nine owners with the largest number or shares get elected to the board of Directors.

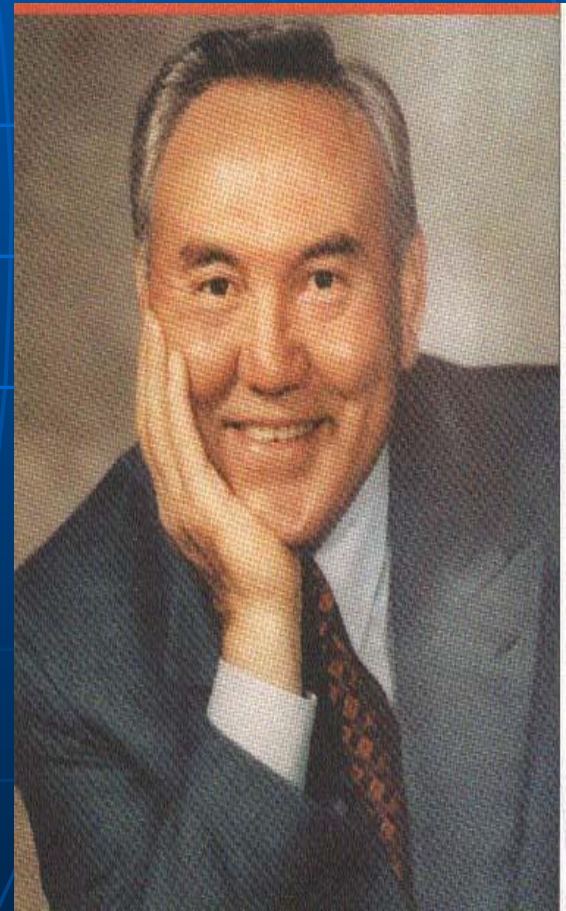
**General manager** -is appointed by the Board of Directors for a certain period of time. He is responsible for managing the company , fulfilling the main strategy and developing business . He reports to the Board of Directors and shareholders.

**Financial Controller**-is responsible for Finance and Accounting Function. They have to provide them with accurate and management reports in a timely manner . Managers use financial data for decision making purposes . Budget group develops plans and budgets.

**Personnel Manager**-is the Head of the Personnel Department. The Personnel Department is dealing with issues of personnel training ,hiring policies ,defining reward systems for people from different departments and divisions.



# Speed development of the company



# Used production in the countries

