



Academic writing

By Dina Abashova 2018

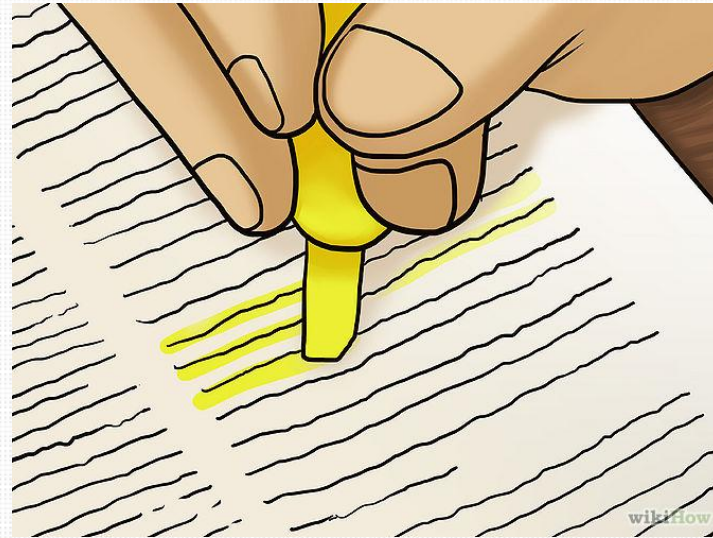
Styles

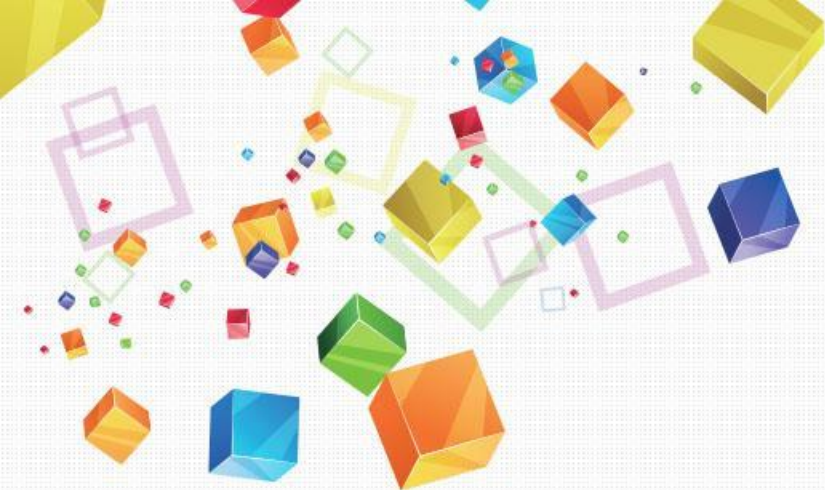
- What is the difference b/n general and academic writing?
- What makes the writing academic?



Let's look at an example

- Read the essay carefully and underline the aspects, that in your opinion, make it academic





Academic writing/Grammatical range

- ❖ Less functional words (can, would) □ more lexical value words (content related)
- ❖ **NOMINALIZATION**-Transition from verb and adjective phrases to noun forms
(*People **cutting down the trees** in the Amazon **causes** environmental problems*=***Deforestation** has led to **the emergence** of environmental problems in the Amazon*)
- ❖ Phrasal verbs should be replaced with academic verbs (take out=extract/excavate, to look for=search/investigate/research)
- ❖ Transition to passive voice-the **point is more important** than the subject or the doer
- ❖ Impersonal reference/generalization (A friend of mine=Many people)
- ❖ Substitution (***Many people think** that the world **is becoming** more **materialistic***=***It is widely believed** that the world is transitioning to a more materialistic sense of values*)
- ❖ Anaphoric (referring to previously mentioned words), cataphoric (referring downward to subsequent words) and exophoric reference (referring to something outside the text)



Nominalization

The country's economy has gone. I estimate bank interest rates to drop.

- My **estimation** is based on the slowdown of the economy.
- The Minister has accepted bribes. This has shocked the nation.
- The minister's **acceptance** of bribes shocked the nation.
- Ram insisted I stay back for dinner. I reached home late.
- I reached home late because of Ram's **insistence**.
- Rita recognized the thief. This led her into trouble.
- Rita's **recognition** of the thief led her into trouble.



Answers

- 1) The rise of the planet's temperature is a result of global warming.
- 2) The business report indicates that sales figures are down 10% on last month, which is worrying.
- 3) The analysis of data by a team of scientists in the lab was undertaken before writing a report.
- 4) Mathematics and physics experts have produced a mathematical formula which explains the modern phenomena of network science.



Why passive?

- Often in academic writing, we **don't want to focus on** who is doing an action, but on who is receiving or experiencing the action. The passive voice is thus extremely useful in academic writing because it allows writers to highlight the most important participants or events within sentences by placing them at the beginning of the sentence.
- **Examples**
In the following sentences, the passive construction is preferable because you want readers to focus on the result of an action rather than the person doing the action.



Why passive?

Active: Scientists classify glass as a solid.

The passive sentence focuses on **how glass is classified**, rather than on who classifies glass.

Passive: Glass is classified as a solid.



IELTS writing task 2 (+/-)

❖ Intro

- General sentence
- Supporting sentence
- Paraphrase
- Plan+opinion (optional)

❖ Body

- Topic
- Add



IELTS writing task 2 (Prob/Sol)

❖ Intro

- General sentence
- Supporting sentence
- Paraphrase
- Plan+opinion (optional)

❖ Body

- Cause
- Explanation