

What's this?



This is an art gallery
(=art museum)

What's this?



This is a **picture**
(=**painting**)

What is the **profession** of this man?



This is an **artist**.

=This is a **painter**.

What's this?



It's a still life picture

Это - натюрморт

What's this?



This is a **landscape**.

Это — **пейзаж**.

What's this?



This is a **portrait**.

Это - **портрет**

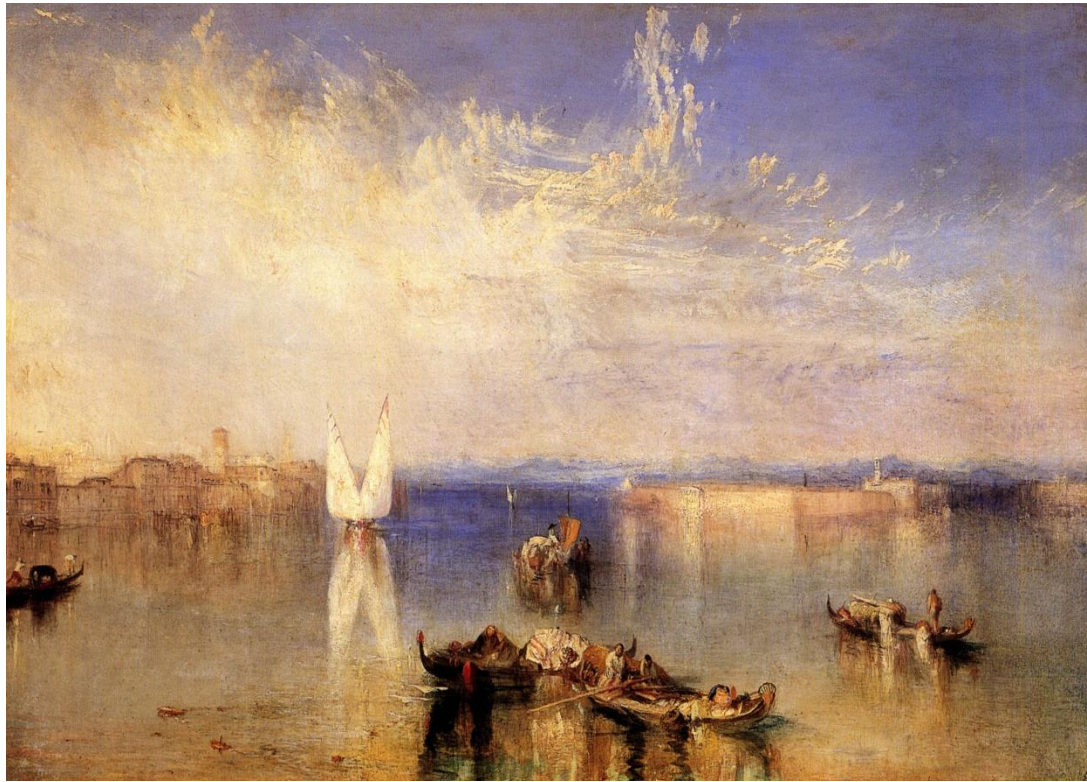
Famous English Artists

Joseph Mallord William Turner



- Born on 23 April 1775
(Covent Garden, London, England)
- Died on 19 December 1851 (aged 76)
(Cheyne Walk, Chelsea, England)
- Nationality English
- Education Royal Academy of Arts
- Known for paintings
- Movement Romanticism

“The Yaht Approaching the coast” by W. Turner



“The Sea” by W. Turner



“Light and colour” by W. Turner



William Hogarth



- Born on 10 November 1697
(London, England)
- Died on 26 October 1764 (aged 66)
(London, England)
- Known for Painter, engraver,
satirist

The Series “Marriage a la mode” by W. Hogarth

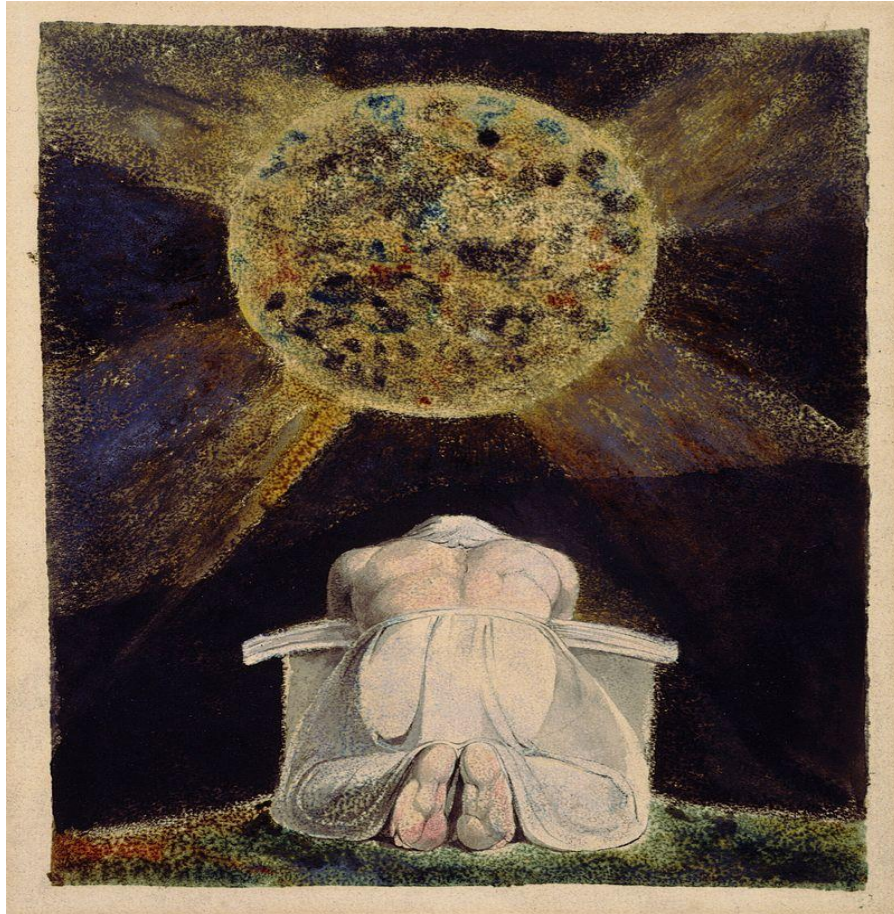


William Blake



- Born on 28 November 1757
(Soho, London, Great Britain)
- Died on 12 August 1827 (aged 69)
(Charing Cross, London, England)
- Occupation: Poet, painter, printmaker
- Genre: Visionary, poetry
- Romanticism

“The song of Los” and “Dante Hell V”



Active or Passive

- To paint
 - To draw
 - To reflect
 - To express
 - To transform
 - To illustrate
- To ... paint..
 - To ... dr...
 - To ... reflect..
 - To ... Express..
 - To ... transform..
 - To ... illustrate..

Active or **Passive**

- | | |
|----------------|-----------------------------------|
| •To paint | •To BE paint ED |
| •To draw | •To BE draw n |
| •To reflect | •To BE reflect ED |
| •To express | •To BE express ED |
| •To transform | •To BE transform ED |
| •To illustrate | •To BE illustrate d |
| •To show | •To BE show n |

Task 2. Self-control

- expressing feelings
- painting
- techniques
- images on canvas
- sketch-books
- oil paintings
- water-colours
- marriage a la mode
- light and colour effects

- Выражая чувства
- Живопись, картина
- Техники
- Образы на холстах
- Наброски, зарисовки
- Картины маслом
- Акварели
- Модный брак
- Игра (передача) свето-тени

Task 3. Self-control.

- A **landscape artist shows nature**: fields, forests, seas, etc...
- A **still life picture illustrates some fruit**, vegetables or flowers in vases or something of this kind.
- An **impressionist mainly uses light and colour** effects than concrete forms and structures
- A **masterpiece is a painting highly praised** by critics all over the world.